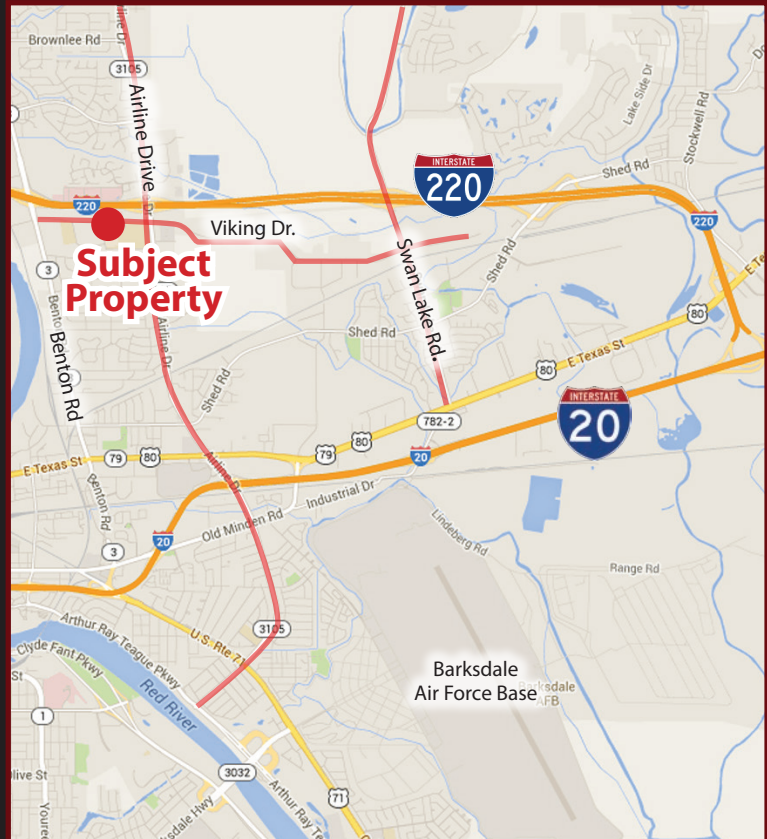




COMMERCIAL LOTS AVAILABLE FOR SALE

2555 VIKING DRIVE, BOSSIER CITY, LA 71111

- Commercial development on Viking Drive with Interstate I-220 Visibility
- Lot 1: .62 A **SOLD** (27,000 SF)
- Lot 2: .62 A **SOLD** (27,000 SF)
- Lot 3: 1.71 Acres (74,685 SF)
May Be Subdivided Into Multiple Lots
- Infrastructure in Place
 - Curb Cuts and Utilities
 - Boulevard Entrance
- Zoned B-3
- Potential Uses Include Retail, Office, Restaurant



For more information, contact:

Brad Armstrong, Associate Broker | 318.222.2244 | barmstrong@vintagerealty.com

ALL INFORMATION CONTAINED HEREIN IS BELIEVED TO BE ACCURATE, BUT IS NOT WARRANTED AND NO LIABILITY OF ERRORS OR OMISSIONS IS ASSURED BY EITHER THE PROPERTY OWNER OR VINTAGE REALTY COMPANY OR ITS AGENTS AND EMPLOYEES. PRICES AS STATED HEREIN AND PRODUCT AVAILABILITY IS SUBJECT TO CHANGE AND/OR SALE OR LEASE WITHOUT PRIOR NOTICE, AND ALL SIZES AND DIMENSIONS ARE SUBJECT TO CORRECTION. REV 9/2016



COMMERCIAL LOTS AVAILABLE FOR SALE

2555 VIKING DRIVE
BOSSIER CITY, LA 71111



For More Information Contact:

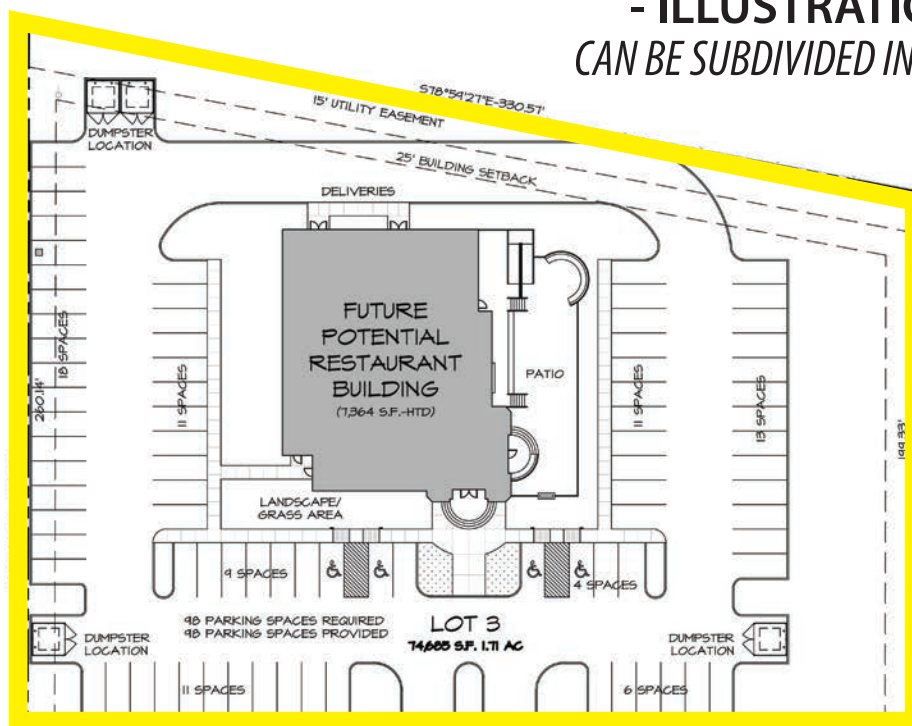
Brad Armstrong, Associate Broker | 318-222-2244
barmstrong@vintagerealty.com | vintagerealty.com

ALL INFORMATION CONTAINED HEREIN IS BELIEVED TO BE ACCURATE, BUT IS NOT WARRANTED AND NO LIABILITY OF ERRORS OR OMISSIONS IS ASSURED BY EITHER THE PROPERTY OWNER OR VINTAGE REALTY COMPANY OR ITS AGENTS AND EMPLOYEES. PRICES AS STATED HEREIN AND PRODUCT AVAILABILITY IS SUBJECT TO CHANGE AND/OR SALE OR LEASE WITHOUT PRIOR NOTICE, AND ALL SIZES AND DIMENSIONS ARE SUBJECT TO CORRECTION. 9/2016

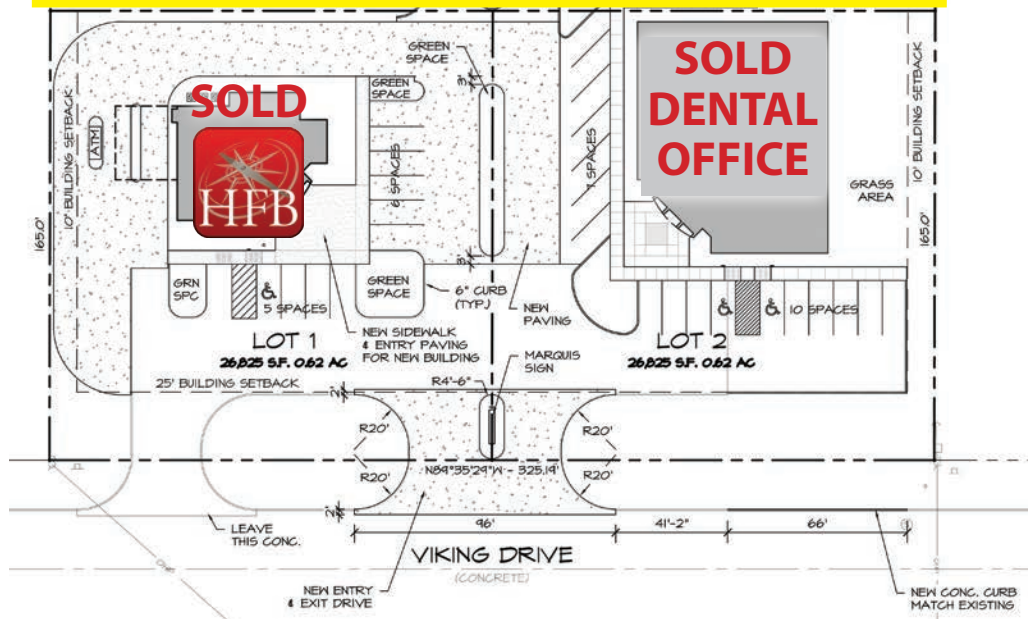
COMMERCIAL LOTS AVAILABLE FOR SALE

2555 VIKING DRIVE
BOSSIER CITY, LA 71111

- ILLUSTRATION ONLY -
CAN BE SUBDIVIDED INTO MULTIPLE LOTS



← **LOT 3:**
1.71 ACRES
(74,685 SF)



For More Information Contact:

Brad Armstrong, Associate Broker | 318-222-2244
barmstrong@vintagerealty.com | vintagerealty.com

ALL INFORMATION CONTAINED HEREIN IS BELIEVED TO BE ACCURATE, BUT IS NOT WARRANTED AND NO LIABILITY OF ERRORS OR OMISSIONS IS ASSURED BY EITHER THE PROPERTY OWNER OR VINTAGE REALTY COMPANY OR ITS AGENTS AND EMPLOYEES. PRICES AS STATED HEREIN AND PRODUCT AVAILABILITY IS SUBJECT TO CHANGE AND/OR SALE OR LEASE WITHOUT PRIOR NOTICE, AND ALL SIZES AND DIMENSIONS ARE SUBJECT TO CORRECTION. 9/2016