



tobacco & mule exchange

225 N. Salem Street
Apex, NC 27526

+/- 4,034 SF suite available

existing salon and
spa/massage space

(Can be demised to +/- 2,549 SF and
+/- 1,485 SF options)

property summary

Existing salon and spa/massage space available for lease

property location

Desirable location in the heart of downtown Apex
Heavy foot and vehicle traffic

availability

Suite 101 +/- 4,034 SF

- Can be demised to +/- 2,549 SF and +/- 1,485 SF options
- Available 5/01/2018

building details

- +/- 16,000 sf of retail, office, and restaurant space with an additional +/- 6,000 sf of lower level storage space
- Charming historic period building that has been recently renovated
- Parking available on street and in parking lot in rear of building
- Hard to find commercial space in downtown Apex

suite specifications

- Storefront with glass along Salem Street
- Creative space featuring hardwood floors and exposed, high ceilings
- Current buildout for salon and spa
- Most retail uses allowable

lease rate

\$21.00 psf gross (net power, HVAC maint, and janitorial)

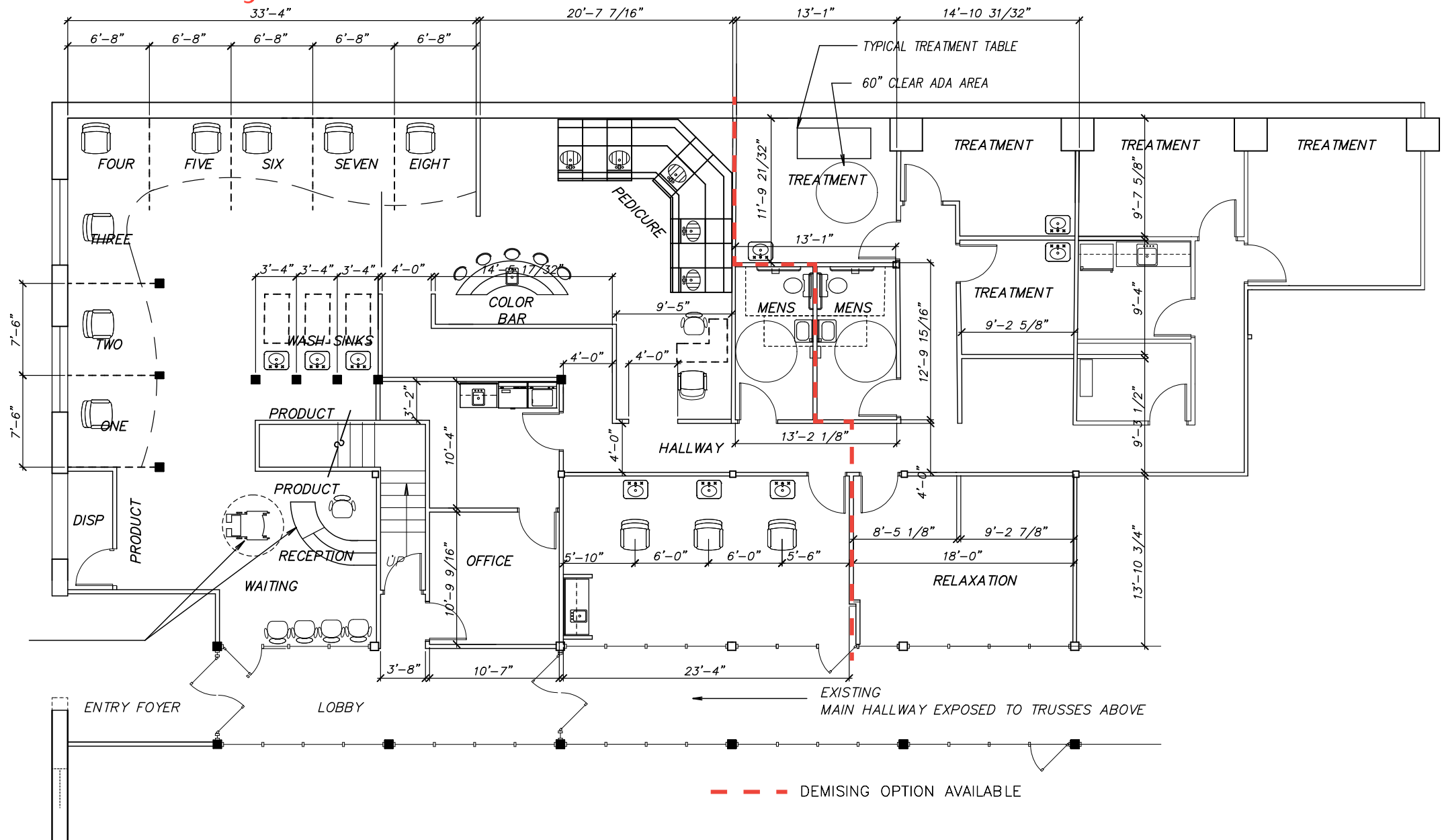
2017 demographics

	1 mile	3 miles	5 miles
Population	10,112	56,731	143,044
Average HH Income	\$95,212	\$121,221	\$119,997
Households	3,830	20,267	52,763
Daytime Population	3,948	23,010	50,450

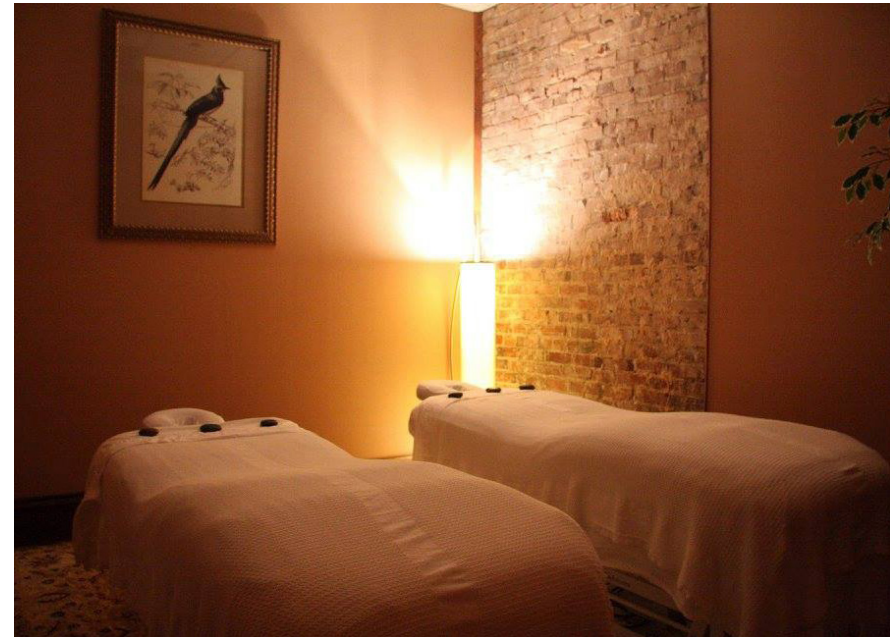


Tobacco & Mule Exchange | Apex, NC

suite 101 layout









Tobacco & Mule Exchange | Apex, NC



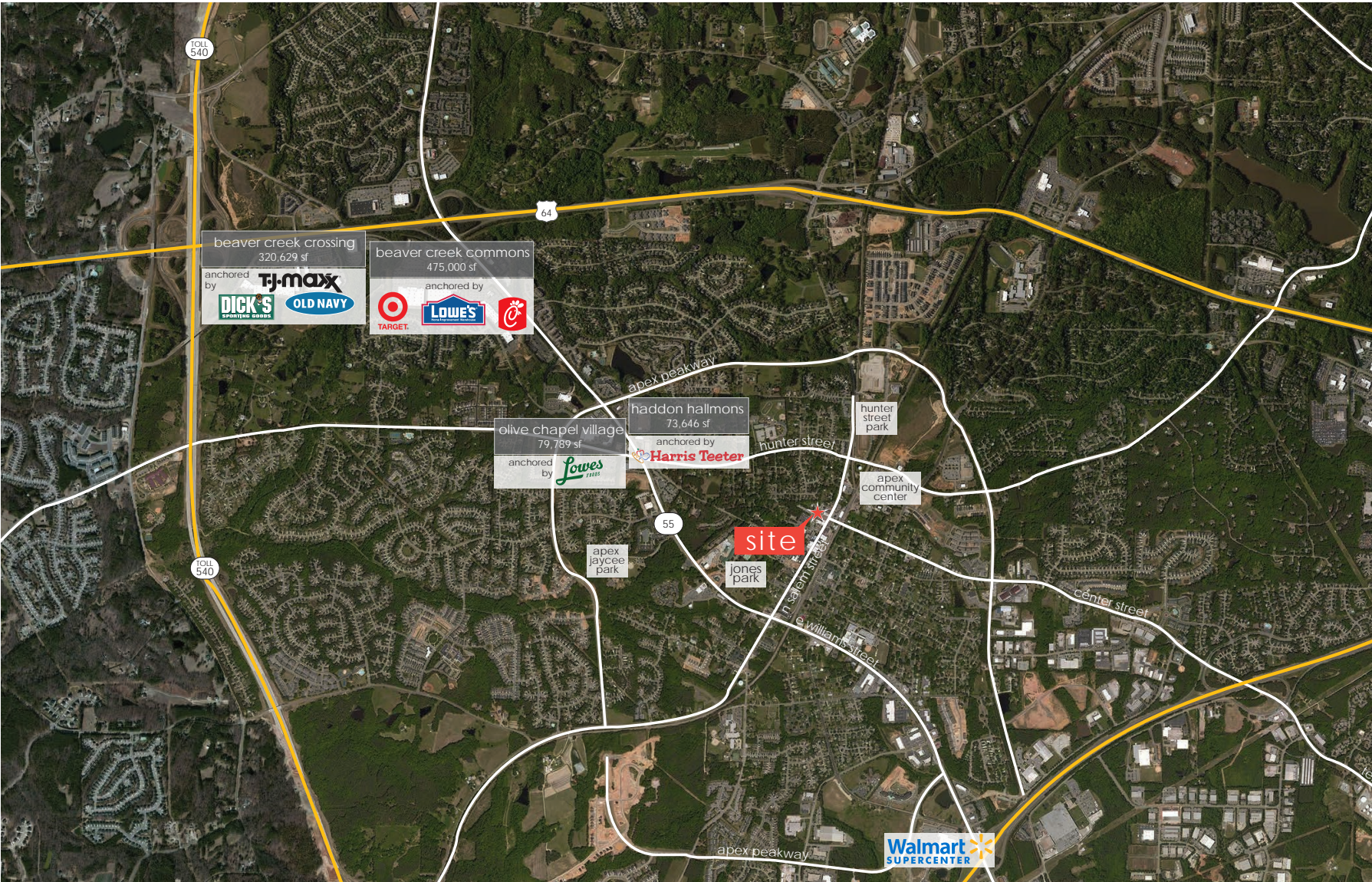
Tobacco & Mule Exchange | Apex, NC

site aerial



Tobacco & Mule Exchange | Apex, NC

apex aerial map



submarket overview

apex

The Town of Apex, North Carolina is perfectly positioned in the Research Triangle area and has a well-deserved reputation for being the best place to live in the United States and is constantly recognized by outside sources for being a great place to live and work.

Recent Apex accolades include:

- 6th Safest City in North Carolina; CreditDonkey (February, 2016)
- Best Places to Live: #1 in America; Time/Money Magazine (August, 2015)
- #2 Best City in NC to get a Job, Zippia (June, 2015)
- 4th Safest Place to Live in North Carolina; Movoto.com (January, 2015)

In 2006, the Small Town Character Overlay Zoning District passed to help maintain the character of the heart of Apex, the Downtown, and surrounding residential neighborhoods. A major streetscape renovation project has restored Apex's downtown and recaptured it's historic flavor. Among those historic buildings is the Tobacco & Mule Exchange.



48k population
via apexnc.org
population is 48,269

89k median household income
via apexnc.org
\$89,392

36 median age
via apexnc.org
median age is 35.9

1.5k businesses
via apexnc.org
1,558 total businesses



Tobacco & Mule Exchange | Apex, NC

For additional information please contact:

JUDSON MCMILLAN
Commercial Sales and Leasing
direct 919 645 2764
judsonmcmillan@yorkproperties.com

presented by

york



York Properties, Inc.
2108 Clark Avenue
Raleigh NC 27605
www.yorkproperties.com