



## Horizon Corporate Center

1000 Crawford Place, Mount Laurel, NJ

### Property Description

Only one suite left for lease within four-story, 39,445 SF Class 'A' office building. Take advantage of this incredible rate to lock up a long-term lease at one of the area's premier addresses!

- Abundant window line with views of Philadelphia skyline
- Lake view setting
- Granite lobbies
- Elevator served
- Ample parking
- Built in 1987
- Wet sprinkler system
- Kastle Security System

### Current Availability

Suite 140

1,522 RSF

LEASE RATE

**\$18.00/SF**

+ ELECTRIC & JANITORIAL

For more information:

**Rebecca Ting, SIOR**

+1 856 234 9600 • [rebecca.ting@naimertz.com](mailto:rebecca.ting@naimertz.com)

**Julie Kronfeld, SIOR**

+1 856 802 6516 • [julie.kronfeld@naimertz.com](mailto:julie.kronfeld@naimertz.com)

NO WARRANTY OR REPRESENTATION, EXPRESS OR IMPLIED, IS MADE AS TO THE ACCURACY OF THE INFORMATION CONTAINED HEREIN, AND THE SAME IS SUBMITTED SUBJECT TO ERRORS, OMISSIONS, CHANGE OF PRICE, RENTAL OR OTHER CONDITIONS, PRIOR SALE, LEASE OR FINANCING, OR WITHDRAWAL WITHOUT NOTICE, AND OF ANY SPECIAL LISTING CONDITIONS IMPOSED BY OUR PRINCIPALS NO WARRANTIES OR REPRESENTATIONS ARE MADE AS TO THE CONDITION OF THE PROPERTY OR ANY HAZARDS CONTAINED THEREIN ARE ANY TO BE IMPLIED.

21 Roland Avenue  
Mount Laurel, NJ 08054

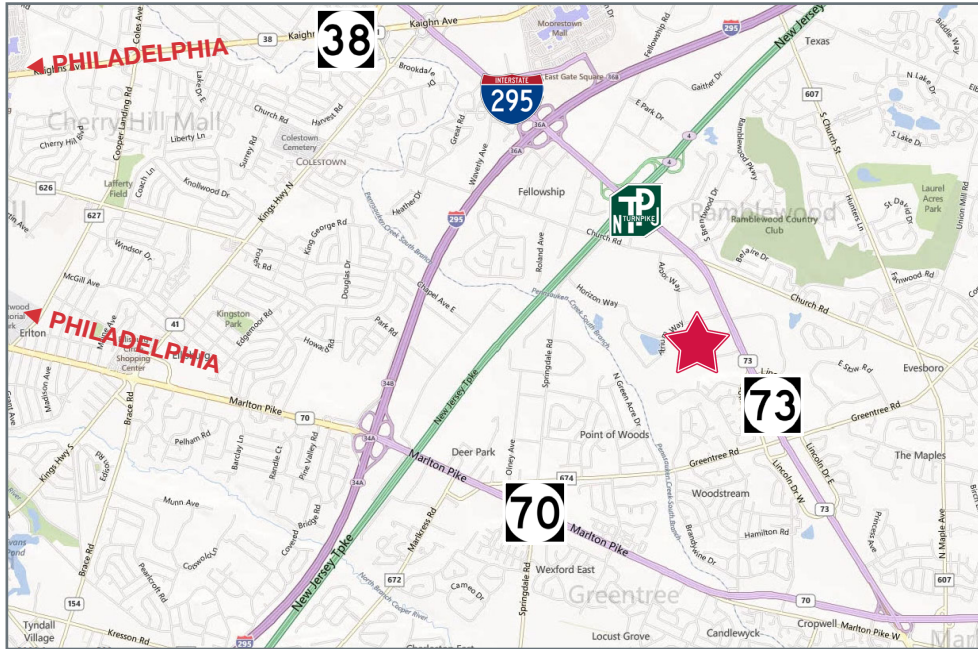
+1 856 234 9600

[naimertz.com](http://naimertz.com)



# Location

## 1000 Crawford Place, Mount Laurel, NJ



### Location Information

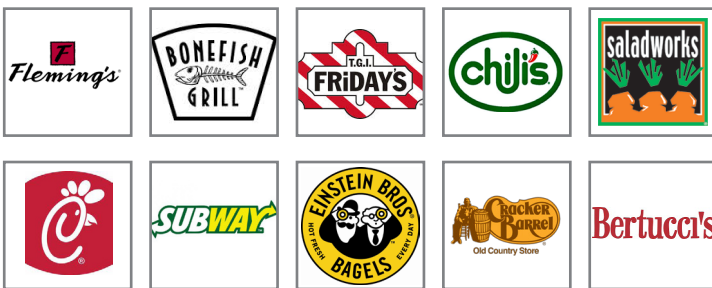
- Located just off Route 73 in Horizon Corporate Center
- Minutes from NJ Turnpike (Exit 4), I-295 (Exit 34) and Routes 38 & 70
- Within 25 minutes of Center City Philadelphia and Philadelphia International Airport

The Horizon Corporate Center has numerous amenities in its immediate area including:

### Lodging



### Dining



### Shopping & Services



### Distance to Other Nearby Amenities:

Moorestown Mall	3.0 mi
The Promenade at Sagemore	3.7 mi
Cherry Hill Mall	5.5 mi
Centreton Square	6.0 mi
Center City Philadelphia	14.0 mi
Philadelphia Airport	25.0 mi
Atlantic City Airport	45.0 mi

For more information:

Rebecca Ting, SIOR

+1 856 234 9600

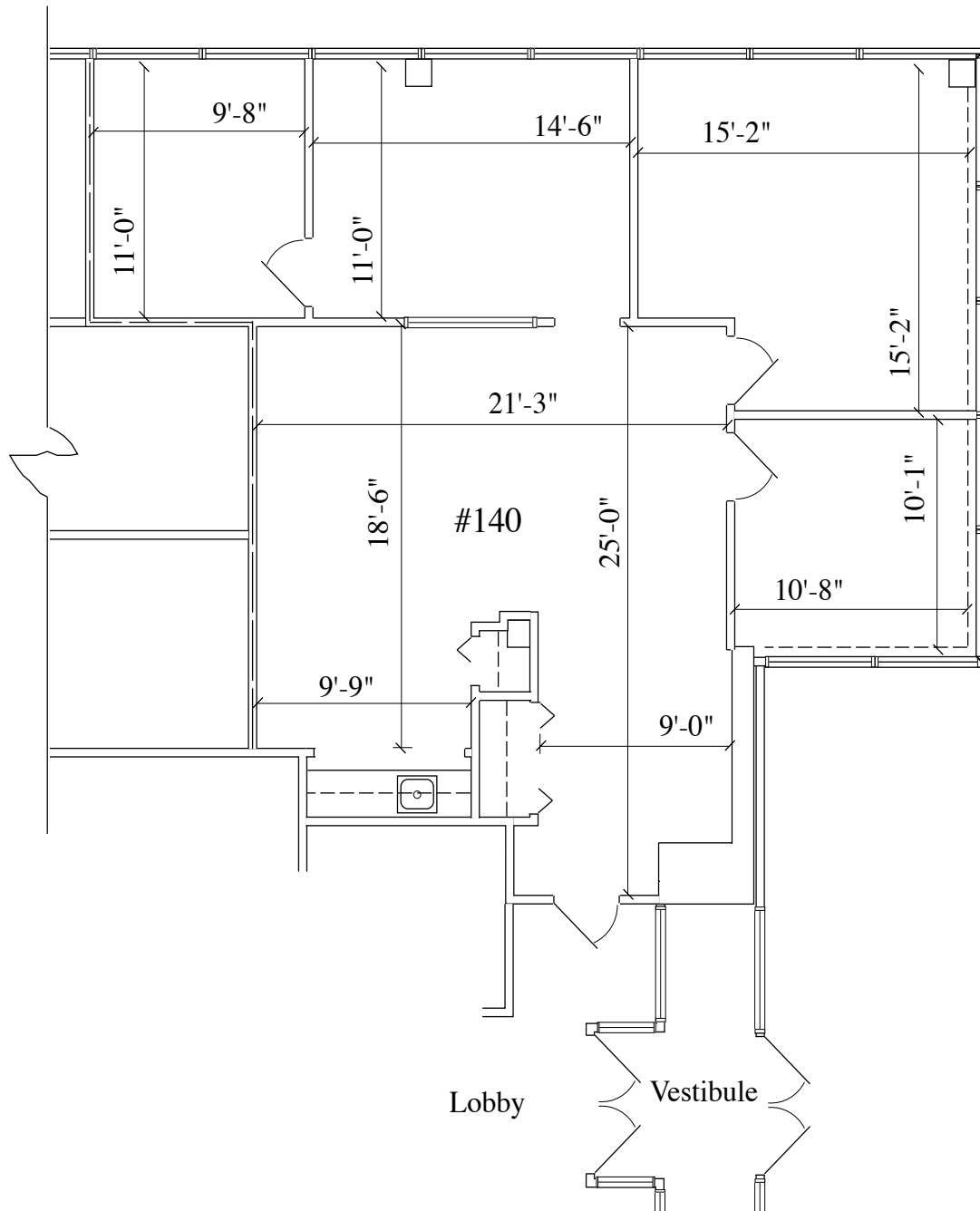
rebecca.ting@naimertz.com

Julie Kronfeld, SIOR

+1 856 802 6516

julie.kronfeld@naimertz.com

Floorplan - Suite 140  
1000 Crawford Place, Mount Laurel, NJ



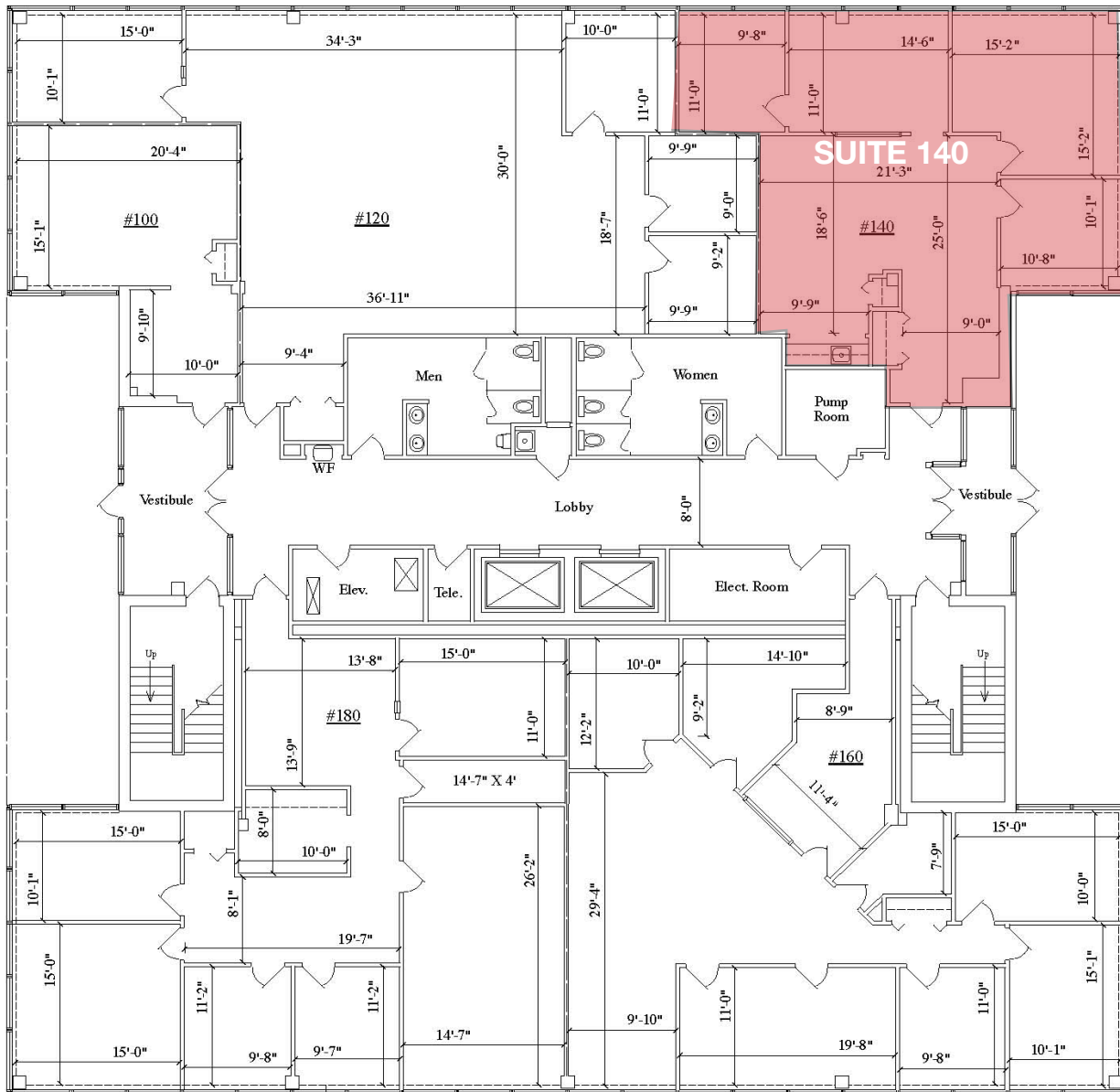
For more  
information:

Rebecca Ting, SIOR  
+1 856 234 9600  
rebecca.ting@naimertz.com

Julie Kronfeld, SIOR  
+1 856 802 6516  
julie.kronfeld@naimertz.com

# Floorplan - First Floor

## 1000 Crawford Place, Mount Laurel, NJ



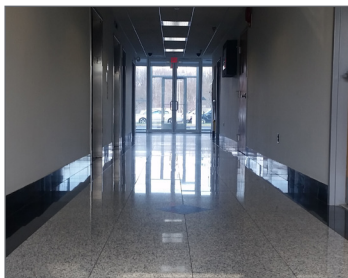
**SUITE 100**  
548 SQ. FT.

**SUITE 120**  
2,122 SQ. FT.

**SUITE 140**  
1,632 SQ. FT.

**SUITE 160**  
2,412 SQ. FT.

**SUITE 180**  
2,412 SQ. FT.



For more  
information:

**Rebecca Ting, SIOR**  
+1 856 234 9600  
rebecca.ting@naimertz.com

**Julie Kronfeld, SIOR**  
+1 856 802 6516  
julie.kronfeld@naimertz.com