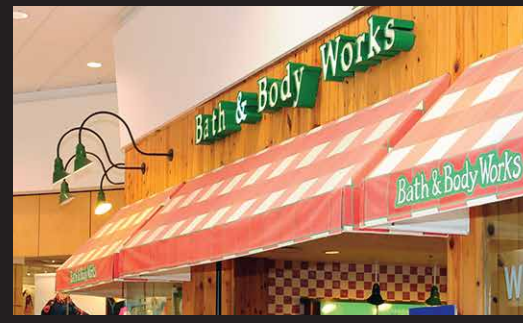




Palmer Park Mall

2455 Park Avenue | Easton, PA 18045



LOCATION

2455 Park Avenue | Easton, PA 18045

ANCHORS

Boscov's, The Bon-Ton,

MAJOR TENANTS

Rack Room Shoes, Jimmy Jazz, Victoria's Secret, Bath & Body Works, Payless, American Eagle Outfitters, Kay Jewelers

GLA

457,981 SF

PARKING

1,902 spaces

JOIN



THE BON-TON



AMERICAN EAGLE OUTFITTERS



- Now under new ownership, Palmer Park Mall continues to be one of the dominate shopping destinations in the Lehigh Valley
- Located in one of the fastest growing regions in the state of Pennsylvania; within minutes of US Hwy 22 and PA State Route 33
- Situated approximately 50 miles north of Philadelphia, 80 miles east of Harrisburg, and 70 miles west of New York City

For more information:

Kathy Hawley | General Manager | 610-428-6233 | khawley@palmerpark.net



CITY VIEW
Commercial, LLC



Palmer Park Mall | Easton, PA



Tenant improvement and landlord build-out / Exterior store front/entrance available



* Conceptual renovations

For more information:

Kathy Hawley | General Manager | 610-428-6233 | khawley@palmerpark.net



Palmer Park Mall | Easton, PA Leasing Plan



| | | | | | |
|-------|---|--------|--------------------------------------|--------|---------------------------------|
| B1 | MAC KARATE - 1,650 SF | B14A | UNIQUE EYEBROW - 584 SF | C16 | HOLIDAY HAIR - 1,200 SF |
| B1A | AVAILABLE - 2,757 SF | B15 | GERTRUDE HAWK - 622 SF | D1 | RENAISSANCE BOUTIQUE - 2,476 SF |
| B2 | AVAILABLE - 2,935 SF | B16 | AMERICAN EAGLE OUTFITTERS - 5,495 SF | D2 | CLAIRE'S - 1,000 SF |
| B3 | VR CAFE - 4,300 SF | B18 | RAINBOW SHOPS 8,500 SF | D3 | GNC - 1,079 SF |
| B4/5A | MILFORD FURNITURE - 4,227 SF | B22 | THE SPORTS SCENE - 3,580 SF | D5 | VICTORIA'S SECRET - 3,744 SF |
| B5 | AVAILABLE - 3,600 SF | B23/24 | HALLMARK - 3,620 SF | D6 | SPENCER GIFTS - 2,000 SF |
| B6 | FOOT LOCKER - 4,200 SF | C1/2 | PEARLE VISION - 4,237 SF | D7/8 | AVAILABLE 4,376 SF |
| B7/8 | JIMMY JAZZ - 8,288 SF | C3 | RACK ROOM SHOES - 7,857 SF | D10 | T-MOBILE - 1,867 SF |
| B9 | CUSTOM T'S - 2,971 SF | C4 | PAYLESS SHOE SOURCE - 2,767 SF | D11 | PRETZELS PLUS - 350 SF |
| B9A | CHILDREN'S PLACE - 4,005 SF | C5 | MASSAGE THERAPY - 2,071 SF | D13 | CALI NAILS - 1,110 SF |
| B10 | BATH & BODY WORKS - 2,988 SF | C7 | SCHUYLKILL VALLEY SPORTS - 8,048 SF | D14 | THE PET SHOP - 2,098 SF |
| B11 | RJ'S CLOSET - 3,545 SF | C9/10 | KAY JEWELERS - 1,518 SF | D15/16 | FREEMAN JEWELERS - 1,150 SF |
| B13 | LITTMAN JEWELERS - 925 SF | C11 | AT&T - 1,404 SF | D17 | DINO'S PIZZA - 1,332 SF |
| B14 | DAIRY QUEEN - ORANGE JULIUS - 800 SF | C12/13 | GAMESTOP - 1,300 SF | D18 | SUBWAY - 1,327 SF |
| | | C14 | SPRINT - 1,033 SF | D19 | LA HACIENDA EXPRESS - 2,344 SF |
| | | | | D20 | FYE - 4,400 SF |

For more information:

Kathy Hawley | General Manager | 610-428-6233 | khawley@palmerpark.net



Palmer Park Mall | Easton, PA

Location Stats



Palmer Park Mall is located in the Lehigh Valley with close proximity to several of the largest markets from New York to Philadelphia.

The property is easily accessible from Routes 22 and 33 as well as Interstate 78.

| DEMOGRAPHICS | 7 MILES | 10 MILES |
|----------------|-----------------|------------------|
| Population | 187,935 | 303,773 |
| Households | 73,403 | 119,293 |
| Ave. HH Income | \$86,625 | \$82,484 |
| Median Age | 41.2 | 41.1 |
| Traffic Counts | 44,000 - Rt. 22 | 15,000 - Rt. 248 |



For more information:

Kathy Hawley | General Manager | 610-428-6233 | khawley@palmerpark.net

