

THE LEGENDARY THOMAS CROWN STUDIOS

**A STATE OF THE ART RECORDING
STUDIO AND POST PRODUCTION FACILITY
IN VIRGINIA BEACH, VA**



[CLICK TO VIEW VIDEO](#)

FOR SALE

FOR MORE INFORMATION, PLEASE CONTACT:

Christopher M. Zarpas
757.640.5437 (d) 757.237.7500 (m)
czarpas@slnusbaum.com

Christopher Devine
757.640.2410 (d) | 757.434.3176 (m)
cdevine@slnusbaum.com

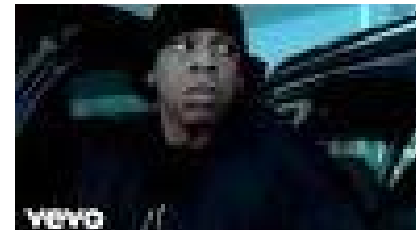
THE ARTIST

THE ARTIST:

The Thomas Crown Studios were developed by Timothy Zachary Mosley, better known as Timbaland, an innovative, four time Grammy Award winning record producer, recording artist and songwriter. His signature sound developed at Thomas Crown, features powerful drum rhythms, obscure sound effects, vocal percussion and a strong attention to melody. That sound has greatly influenced multiple genres including R&B, Rap, Pop and Electronic music. Timbaland's incredible versatility has led to collaborations with a diverse array of artists such as Missy Elliott, Snoop Dogg and Björk, Jay-Z, Justin Timberlake, Katy Perry, Coldplay, Kanye West, Brad Paisley and Shakira. Many of their beats were recorded and mixed at Thomas Crown Studios, including the multi-platinum album *Future Sex/Love Sounds* by Justin Timberlake. The smash hit single *SexyBack* held the number one spot on Billboard for seven weeks.



If We Ever Meet Again
Katy Perry



Dirt off Your Shoulder
Jay-Z



4 Minutes
Madonna



Oops (Oh My)
Missy Elliott



Dipping in My Cadillac
Snoop Dogg Ft. Rick Ross



SexyBack
Justin Timberlake

FOR MORE INFORMATION, PLEASE CONTACT:

Christopher M. Zarpas
757.640.5437 (d) 757.237.7500 (m)
czarpas@slnusbaum.com

Christopher Devine
757.640.2410 (d) | 757.434.3176 (m)
cdevine@slnusbaum.com

S.L. Nusbaum Realty Co. | 1700 Wells Fargo Center | 440 Monticello Avenue | Norfolk, VA 23510 | 757.627.8611 | slnusbaum.com

No warranty or representation, expressed or implied, is made to the accuracy or completeness of the information contained herein, and same is submitted subject to errors, omissions, change of price, rental or other conditions, withdrawal without notice, and to any special listing conditions imposed by the property owner(s). As applicable, we make no representation as to the condition of the property (or properties) in question.

PROPERTY DETAILS

THE BUILDING

- Located at 5239 Challendon Drive, Virginia Beach, VA
- 6,756 SF Building on .2893 Acres of Land
- Three Recording Studios/ Soundroom / Two Bedrooms /Four Bathrooms
- Commercial Kitchen
- Server Room with Dedicated HVAC
- Seven Zone HVAC System
- Security System with Multiple Cameras

ACOUSTICS

Thomas Crown offers three fully equipped studios and a sound room. Studio Interiors, architecture and acoustics were designed by the acclaimed Walters-Story Design Group of New York. WSDG created an acoustic environment that maintains full-frequency response while allowing a significant amount of daylight into the room. Custom monitor speakers were designed for the large control room to provide an accurate environment for 5.1 mixing and even sound distribution. Studio A is a double height space created to accommodate both single vocalists as well as live group recording. Support rooms, including studio lounge and private 2nd floor bedrooms have been acoustically designed for recording purposes. The equipment design and specifications were created by legendary recording engineer Jimmy Douglass.

FOR MORE INFORMATION, PLEASE CONTACT:

Christopher M. Zarpas
757.640.5437 (d) 757.237.7500 (m)
czarpas@slnusbaum.com

Christopher Devine
757.640.2410 (d) | 757.434.3176 (m)
cdevine@slnusbaum.com

PROPERTY DETAILS

TECHNOLOGY:

- ❑ **Consoles: Neve VR-72 and Yamaha DM2000**
- ❑ **Recorders: Digidesign Pro Tools Mix Plus/24 systems, HD System; Studer A 827; Studer 820 2tk**
- ❑ **Monitors: Augspurger custom monitors; KRK V8 nearfield monitors ... Amps: Hafler, JBL**
- ❑ **Amps: Hafler, JBL**
- ❑ **Microphones: AKG, Tefunken; Sennheiser; Neumann; Shure; Coles; Royer; DPA; AEA; Electro-Voice; Sony**
- ❑ **Outboards: Teletronics; Urei; EAR; Alan Smart; Neve; Empirical Labs; dBx; Avalon; Daking; EMT; API; Universal Audio; D.W. Fear; Focusrite; Crane Song; Lexicon; AMS; Eventide: Drawmer; WEM; Sony; Lexicon 960 Reverb w/LARC**
- ❑ **A complete list of Equipment follows on pages 5-7**

❑ BUILDING OFFERED AT \$695,000 - \$244,000 BELOW ASSESSED VALUE

❑ STUDIO EQUIPMENT TO CONVEY BY SEPARATE AGREEMENT AT \$200,000

FOR MORE INFORMATION, PLEASE CONTACT:

Christopher M. Zarpas
757.640.5437 (d) 757.237.7500 (m)
czarpas@slnusbaum.com

Christopher Devine
757.640.2410 (d) | 757.434.3176 (m)
cdevine@slnusbaum.com

EQUIPMENT LIST STUDIO A

| | |
|---|------------------|
| 72 Channel Neve VR Series Consoles | |
| Yamaha DM 2000 | \$560,000 |
| Augspurger Speakers (2) | \$60,000 |
| Wire Plug in Outlet Center | \$97 |
| Radial JD6 | \$900 |
| Patchbay Tielines (2) | \$200 |
| Speaker Tielines | \$99 |
| Patchwork Tielines | \$89 |
| Eventide Model H3500 DFX Harmonizer | \$1,499 |
| Eventide Model H7600 Harmonizer | \$3,600 |
| Yamaha SPX 2000 | \$1,150 |
| Lexicon SPX 400 | \$180 |
| Lexicon SPX 300 | \$1,000 |
| Lexicon PCM 42 (2) | \$2,590 |
| Universal Audio 1176 LN Limiting Amp (2) | \$4,000 |
| EQP-200B Dual Program Equalizer | \$1,760 |
| Model 8200 Parametric Equalizer | \$6,165 |
| dbx 160A Compressor Limiter (2) | \$1,720 |
| Tube-Tech Program Equalizer (3) | \$354 |
| 166 XL Compressor Limiter/Gate | \$99 |
| Teletronix Level Amp Model LA-2A (2) | \$6,998 |
| BAE 1073MP | \$2,100 |
| Avalon Vacuum tube | \$2,475 |
| Millennia Music Media STT 1 Origin | \$3,068 |
| Hear Tech hear back HUB (2) | \$1,390 |

| | |
|---|------------------|
| HHB UDP 89 dvd/cd player | \$744 |
| Tascam CD-200i | \$330 |
| HHB Dual Driver CD Recorder | \$499 |
| Tascam DA 45HR | \$170 |
| Gefenmulti | \$1,249 |
| Aard Sync Aravark (4) | \$2,800 |
| Yamaha NS-10M Studio (2) | \$618 |
| TV 55 inch | \$400 |
| Lexicon | \$100 |
| Primacoustic (2) | \$180 |
| BGW Subwoofer | \$600 |
| KRK 10S system | \$399 |
| 6 keyboards | \$600 |
| APC- Smart UPS 1500 | \$327 |
| HD 1/0 (3) | \$4,785 |
| Genelec (2) | \$6,998 |
| Bryston 3B SST | \$2,500 |
| 4700 White instrument Octave | \$85 |
| Videotek VSG-201 | \$85 |
| Power supply Unit Flying Faders Automation | \$97 |
| Neve (3) | \$2,100 |
| Midi Express plug | \$97 |
| Mac Computer | \$2,560 |
| TOTAL | \$689,856 |

FOR MORE INFORMATION, PLEASE CONTACT:

Christopher M. Zarpas
757.640.5437 (d) 757.237.7500 (m)
czarpas@slnusbaum.com

Christopher Devine
757.640.2410 (d) | 757.434.3176 (m)
cdevine@slnusbaum.com

EQUIPMENT LIST STUDIO B

| | |
|--|------------------|
| AWS 900 Analogue Workstation | \$100,000 |
| 2 KRK Speakers | \$1,375 |
| Yamaha speakers (2) | \$2,200 |
| Casio Speakers | \$6,000 |
| 50 inch TV | \$350 |
| Augspurger Duo Minimax Pair (2) | \$50,000 |
| Mic Stands (6) | \$600 |
| Headphone Stand (Redcoaudio) | \$129 |
| Pro line music stand | \$40 |
| Microphone | \$500 |
| Avalon Design | \$2,500 |
| Millennia Origin | \$3,000 |
| Isochrome | \$1,500 |
| Apogee Rosetta 200 | \$685 |
| Furman PreSonus | \$1,800 |
| dbx 166XL | \$380 |
| Lexicon MX400 | \$280 |
| Lexicon MX300 | \$250 |
| Bryson 4B | \$1,500 |
| Furman M-8LX | \$900 |

| | |
|--------------------------------|------------------|
| Behringer Mixer | \$150 |
| Xta Electronics | \$250 |
| HNB UDP Recorder | \$1,000 |
| APC power saving backup | \$150 |
| GT103 | \$450 |
| Yamaha SPX 2000 | \$1,149 |
| Plugin Wireworld | \$50 |
| Gefen TV Multi | \$1,249 |
| Patchbay Tielines | \$100 |
| Midi Tielines | \$250 |
| Moto midi express 128 | \$250 |
| Switchcraft distributer | \$300 |
| BSS Audio (3) | \$507 |
| Kensington Mouse | \$180 |
| Bryson | \$500 |
| Ediral keyboard | \$80 |
| M-Audio Key Rig 49 | \$50 |
| KRK Speakers Subwoofer | \$800 |
| Epic Sound Speakers (5) | \$505 |
| Sony 50 inch | \$300 |
| TOTAL | \$182,259 |

FOR MORE INFORMATION, PLEASE CONTACT:

Christopher M. Zarpas
757.640.5437 (d) 757.237.7500 (m)
czarpas@slnusbaum.com

Christopher Devine
757.640.2410 (d) | 757.434.3176 (m)
cdevine@slnusbaum.com

EQUIPMENT LIST STUDIO C/SOUNDROOM

| STUDIO C | |
|--------------------------|------------------|
| Protools Soundboard | \$11,000 |
| 40 inch tv casio | \$250 |
| Mac Computer Monitor | \$1,040 |
| KMX 8XB MIDI Patch Bay | \$350 |
| Vintage Pro Key Module | \$275 |
| Proteus 2000 | \$700 |
| Roland JV-2080 Syn Exp | \$1,150 |
| Primacqstic speakers 10 | \$2,690 |
| Furman PL 8 Series II | \$199 |
| RANF SM 825 Studio Mixer | \$730 |
| Emagic Amt 8 | \$226.53 |
| Creamware | \$24.99 |
| Yamaha Tone Generator | \$330 |
| TOTAL | 18,965.52 |

| SOUNDROOM | |
|-----------------------|----------------|
| Sound room booth | \$1,200 |
| 5 mics | \$500 |
| proline keyboard | \$70 |
| Drums (Ludwig) | \$1,899 |
| LP Aspire Bongos | \$120 |
| Headphone Stand (2) | \$258 |
| M Gear foot pedal (2) | \$160 |
| Bells | \$35 |
| Rhythm Tec | \$30 |
| Snear drums (3) | \$450 |
| Granite Blocks | \$270 |
| TOTAL | \$4,922 |

| | |
|------------------------|----------------|
| SECURITY SYSTEM | \$4,000 |
|------------------------|----------------|

ORIGINAL COST – ALL EQUIPMENT: \$900,002.52

FOR MORE INFORMATION, PLEASE CONTACT:

Christopher M. Zarpas
 757.640.5437 (d) 757.237.7500 (m)
 czarpas@slnusbaum.com

Christopher Devine
 757.640.2410 (d) | 757.434.3176 (m)
 cdevine@slnusbaum.com

INTERIORS

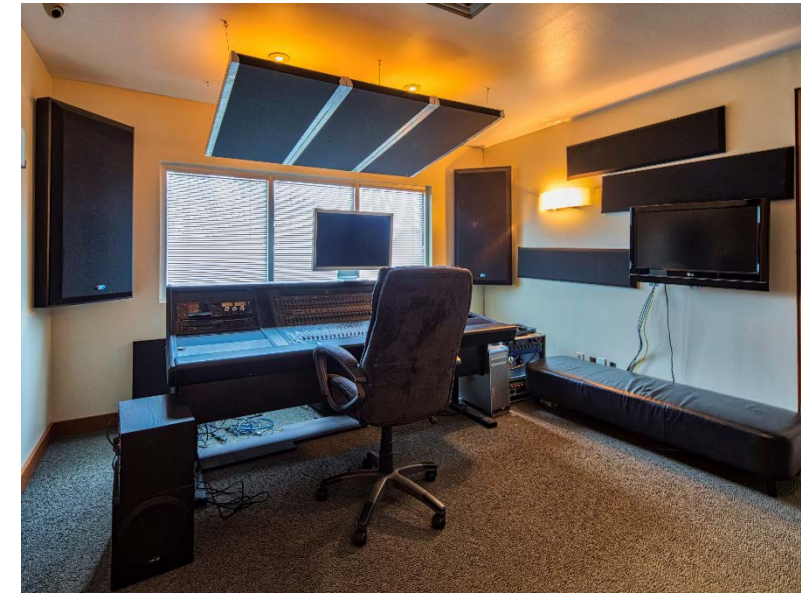


FOR MORE INFORMATION, PLEASE CONTACT:

Christopher M. Zarpas
757.640.5437 (d) 757.237.7500 (m)
czarpas@slnusbaum.com

Christopher Devine
757.640.2410 (d) | 757.434.3176 (m)
cdevine@slnusbaum.com

INTERIORS



FOR MORE INFORMATION, PLEASE CONTACT:

Christopher M. Zarpas
757.640.5437 (d) 757.237.7500 (m)
czarpas@slnusbaum.com

Christopher Devine
757.640.2410 (d) | 757.434.3176 (m)
cdevine@slnusbaum.com

INTERIORS



FOR MORE INFORMATION, PLEASE CONTACT:

Christopher M. Zarpas
757.640.5437 (d) 757.237.7500 (m)
czarpas@slnusbaum.com

Christopher Devine
757.640.2410 (d) | 757.434.3176 (m)
cdevine@slnusbaum.com

INTERIORS



FOR MORE INFORMATION, PLEASE CONTACT:

Christopher M. Zarpas
757.640.5437 (d) 757.237.7500 (m)
czarpas@slnusbaum.com

Christopher Devine
757.640.2410 (d) | 757.434.3176 (m)
cdevine@slnusbaum.com

S.L. Nusbaum Realty Co. | 1700 Wells Fargo Center | 440 Monticello Avenue | Norfolk, VA 23510 | 757.627.8611 | slnusbaum.com

COASTAL VIRGINIA



MAJOR CITIES: COASTAL VIRGINIA

Coastal Virginia is a region of 9 cities and 2 counties also known as Hampton Roads. Time Magazine recently reported Hampton Roads is the fastest-growing destination for millennials. [Click Here for Article](#) Hampton Roads is situated in the middle of the Eastern seaboard where the James, Nansemond and Elizabeth rivers pour into the mouth of the Chesapeake Bay. It is recognized as the 33rd largest Metropolitan Statistical Area (MSA) in the United States, eighth largest metro area in the Southeast United States and the second largest between Atlanta and Washington, DC. Six of the 10 largest population centers in the United States are located within 750 miles of Hampton Roads.

SUBJECT PROPERTY

FOR MORE INFORMATION, PLEASE CONTACT:

Christopher M. Zarpas
757.640.5437 (d) 757.237.7500 (m)
czarpas@slnusbaum.com

Christopher Devine
757.640.2410 (d) | 757.434.3176 (m)
cdevine@slnusbaum.com

VIRGINIA BEACH



Virginia Beach, Virginia's most populous city, is a great place to start or expand a business. While regarded as one of the favorite vacation destinations on the East Coast, business leaders across the globe also recognize the benefits of locating a company here. Virginia Beach is home to national and international corporate headquarters, including STIHL, LifeNet Health, Liberty Tax and others, and is extremely pro-business. A low tax rate, high-tech infrastructure, attractive cost of living, a growing population of educated and motivated young people, and our beaches, combine to make Virginia Beach America's next business boomtown. The subject property is only 6.5 miles from Norfolk International Airport which offers direct, non-stop service to Atlanta, Charlotte, Miami, New York and Washington DC. Amtrak offers daily, direct train service on the Northeast Limited with multiple stops at all major Northeastern cities.

Note: Information provided by Hampton Roads Economic Development Website






FOR MORE INFORMATION, PLEASE CONTACT:

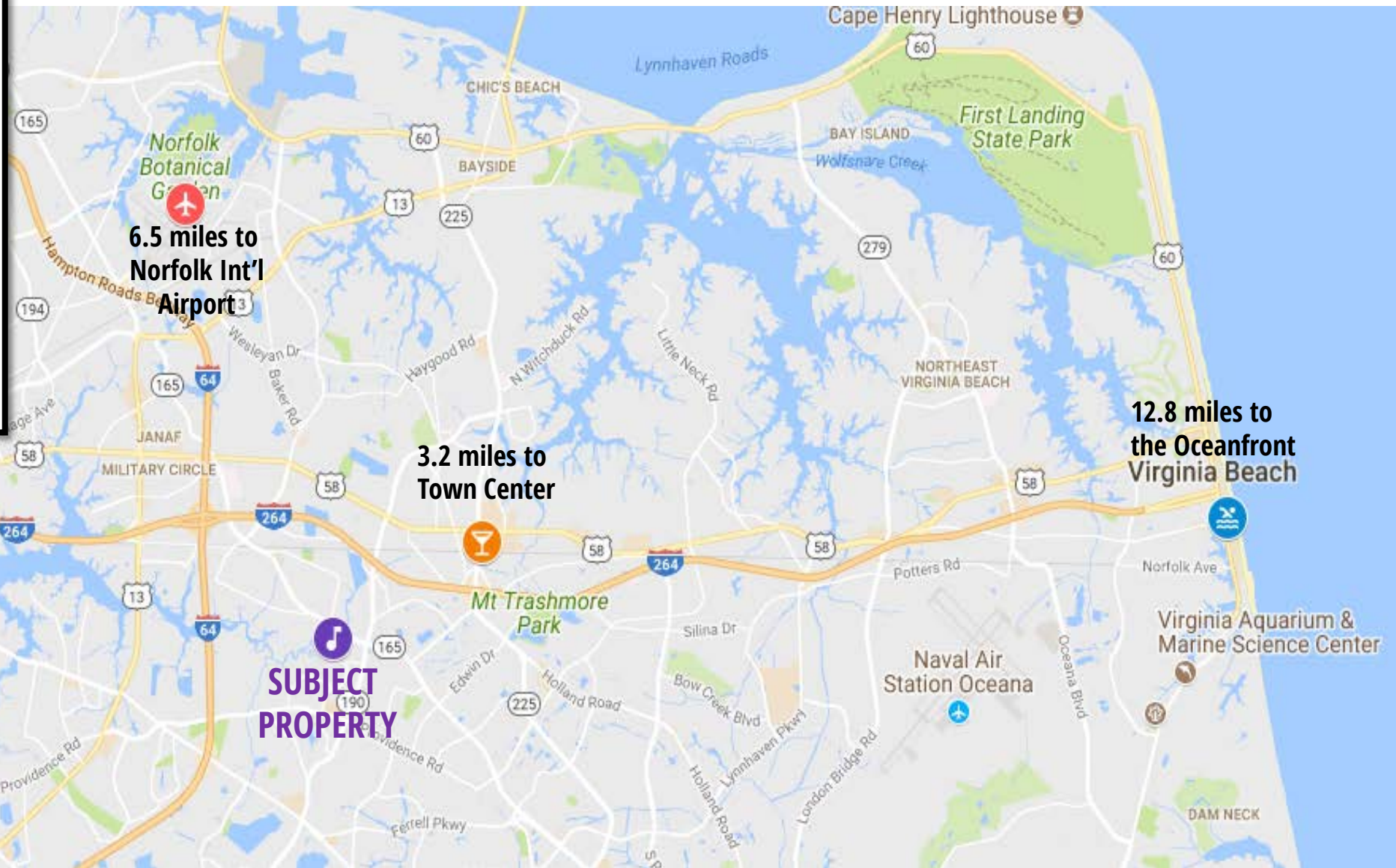
Christopher M. Zarpas
757.640.5437 (d) 757.237.7500 (m)
czarpas@slnusbaum.com

Christopher Devine
757.640.2410 (d) | 757.434.3176 (m)
cdevine@slnusbaum.com

VIRGINIA BEACH

5239 Challendon Dr. Map

-  SUBJECT PROPERTY
-  Norfolk International Airport
-  Downtown Norfolk
-  Virginia Beach Town Center
-  Virginia Beach Oceanfront



FOR MORE INFORMATION, PLEASE CONTACT:

Christopher M. Zarpas
757.640.5437 (d) 757.237.7500 (m)
czarpas@slnusbaum.com

Christopher Devine
757.640.2410 (d) | 757.434.3176 (m)
cdevine@slnusbaum.com