

23121 Plaza Pointe Drive,
Laguna Hills CA 92653

OfficeSpaceForLease



AVAILABLE SEVEN OFFICE SPACES WITH A TOTAL OF 2,192 SQUARE FEET

<u>Space</u>	<u>Rentable Square Foot</u>	<u>Rent</u>	<u>Term</u>
101	499	-----	LEASED
102	242	\$2.00 FSG	Short Term Possible
103	244	\$2.00 FSG	Short Term Possible
107	450	-----	LEASED
109	285	\$2.00 FSG	Short Term Possible
A	216	NEG	Negotiable
B	256	NEG	Negotiable

For More Information, Contact:

Ata Boroumand
BRE#01059087
ata-b@msn.com
949-300-9066



**BERKSHIRE
HATHAWAY**

H.S.

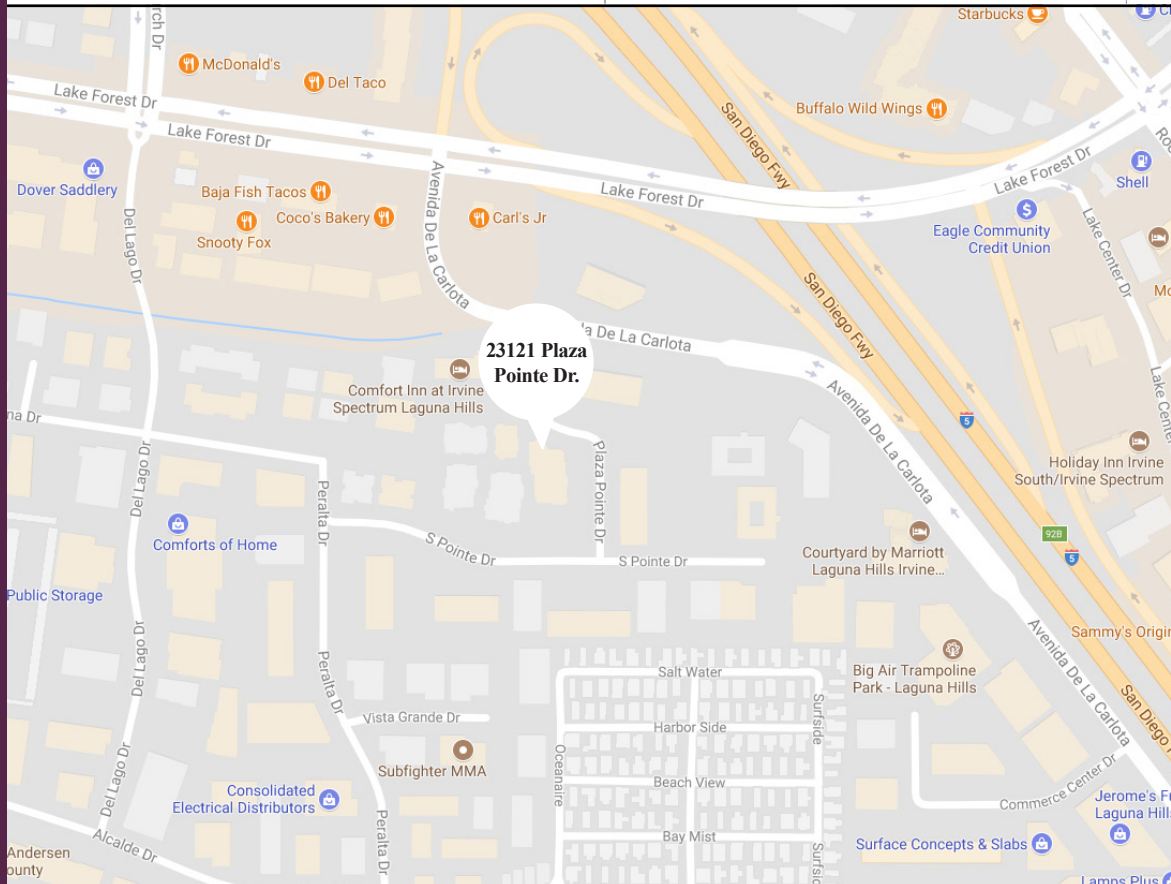
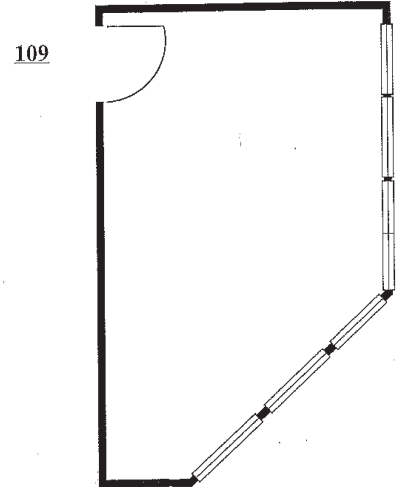
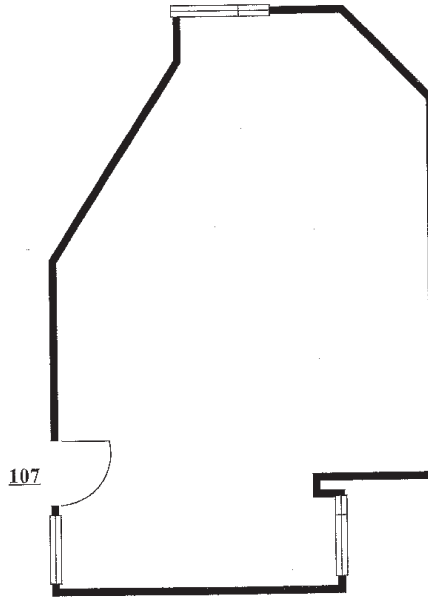
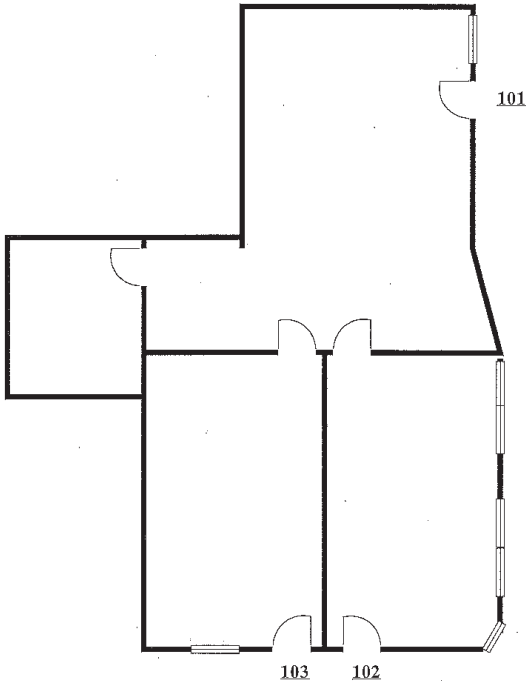
California Properties

COMMERCIAL DIVISION

Free use of the building's conference room
Free use of the building's break room
Space A & B have secretary space, file room and lunch room accommodations.
Surface free parking - 4:1 parking ratio
Immediate access to 5 & 405 Freeways and the Toll Road
10 to 15 Min. to Irvine Train Station
20 Min. to the Orange County Airport

23121 Plaza Pointe Drive, Laguna Hills CA 92653

OfficeSpaceForLease



For More Information, Contact:

Ata Boroumand

BRE#01059087

ata-b@msn.com

949-300-9066



**BERKSHIRE
HATHAWAY**

H.S.

California Properties

COMMERCIAL DIVISION

29982 Ivy Glenn Dr., Ste. 100 Laguna Niguel, CA 92677

No warranty or representation is made to the accuracy of the foregoing information. Terms of sale or lease and availability are subject to change or withdrawal without notice