

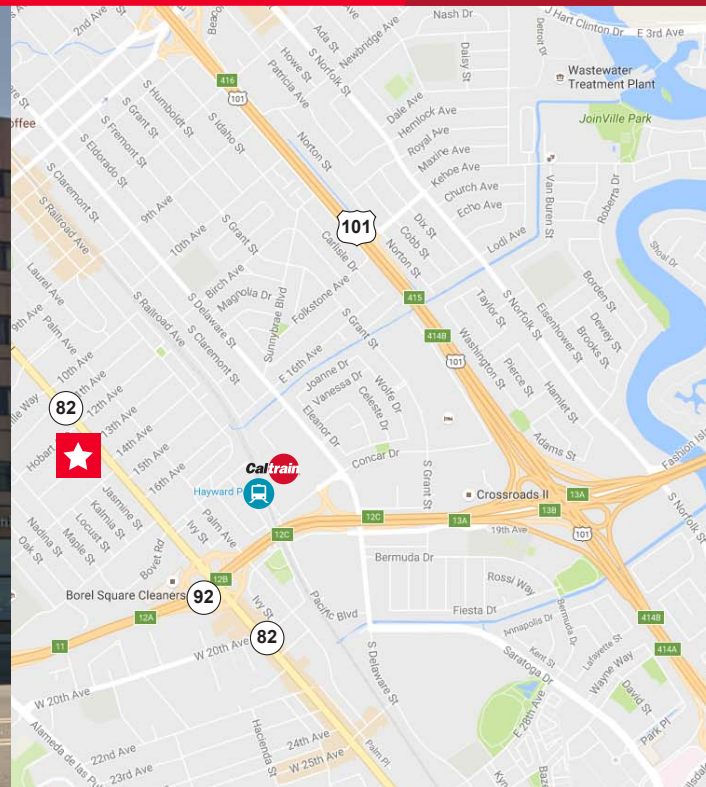
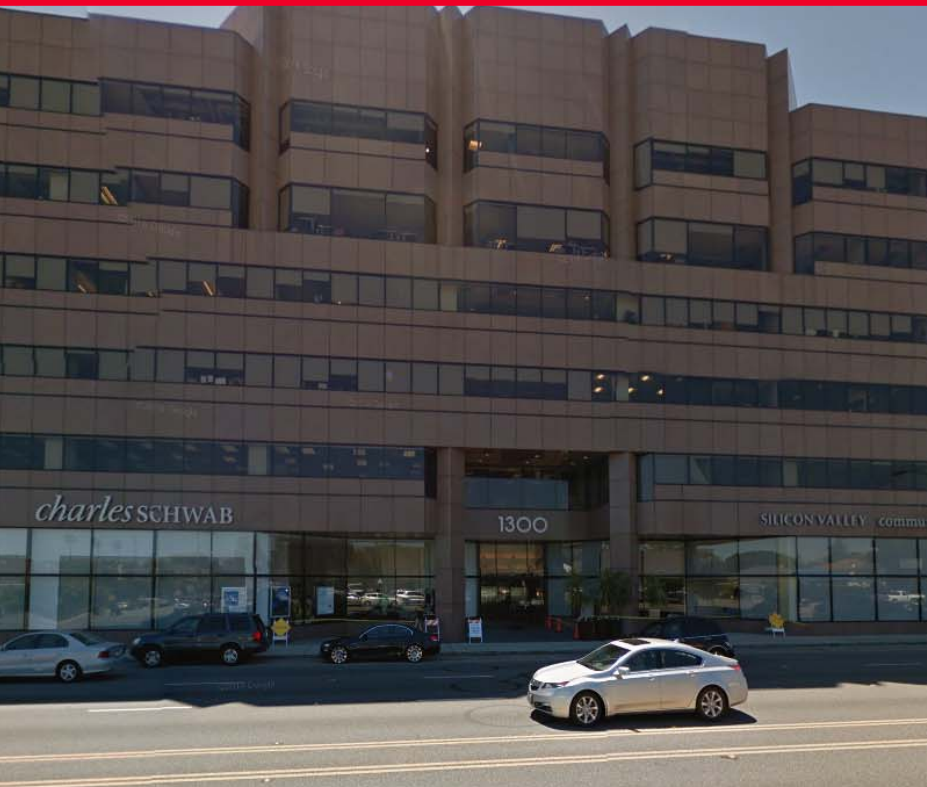


**CUSHMAN &
WAKEFIELD**

FOR SUBLEASE

1300 S El Camino Real

San Mateo, California



Property Highlights

- ±1,200 SF sublease asking \$4.40 Full Service
- 2,400 SF suite: Shared work environment with Hedge Fund
- One very large conference room, one office (taken, but usable about 1/2 time due to travel) and one small meeting room/phone room
- Entry area with chairs
- New kitchen - dishwasher, fridge, sink, disposal
- Espresso machine with capsule espresso
- Beautiful views, lots of light!
- Recent remodel, with new carpet, paint, art, cabinets, custom wood panels, kitchen appliances
- Reclaimed wood sharable tables for up to 6 people per table (2 tables are open for the new sublessor)
- Class A building with Charles Schwab and Silicon Valley Community Foundation as the anchor tenants
- Building is in excellent condition, one of the nicest in the mid peninsula area
- Four underground and gated garage passes/access fobs
- Good parking overall in the area
- Good access to trains, the 92, 280 and 101
- Several great lunch spots within walking distance, and a great many within a 1 mile drive/bike ride
- Rentable bikes at the facility
- Can hold up to 10 people. Additional people over add \$600/month per person, maximum of 18 up to 2,000 SF

Ryan Carr

+1 650 320 0227
ryan.carr@cushwake.com
LIC #01924765

1950 University Avenue, Suite 220
E. Palo Alto, CA 94303
main +1 650 852 1200
fax +1 650 856 1098
cushmanwakefield.com

Interiors

**Ryan Carr**

+1 650 320 0227
ryan.carr@cushwake.com
LIC #01924765

1950 University Avenue, Suite 220
E. Palo Alto, CA 94303
main +1 650 852 1200
fax +1 650 856 1098
cushmanwakefield.com