

FOR SALE

GOOD SHEPARD

1265 PARKVIEW

DETROIT, MICHIGAN



PROPERTY INCLUDES

- + 11,000 SF Church
- + 3,200 SF Rectory
- + +/- 1.10 AC land across the street
- + .5 Miles from Detroit River
- + 3 Miles from central business district
- + Average area income \$47,591
- + Listed at \$850,000



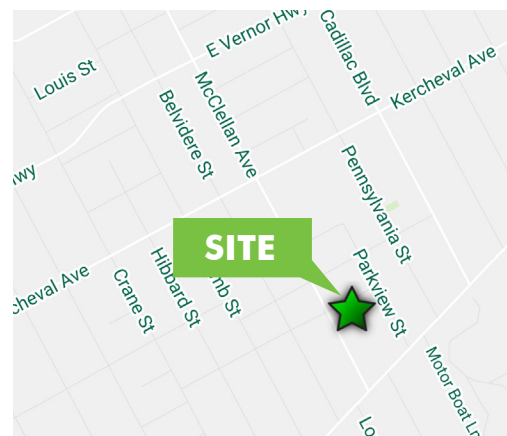
CONTACT US

JOSEPH ROSENBERG

Senior Vice President

+1 248 351 2042

joseph.rosenberg@cbre.com



www.cbre.com/aod

CBRE

FOR SALE GOOD SHEPARD

1265 PARKVIEW
DETROIT, MICHIGAN

AERIAL

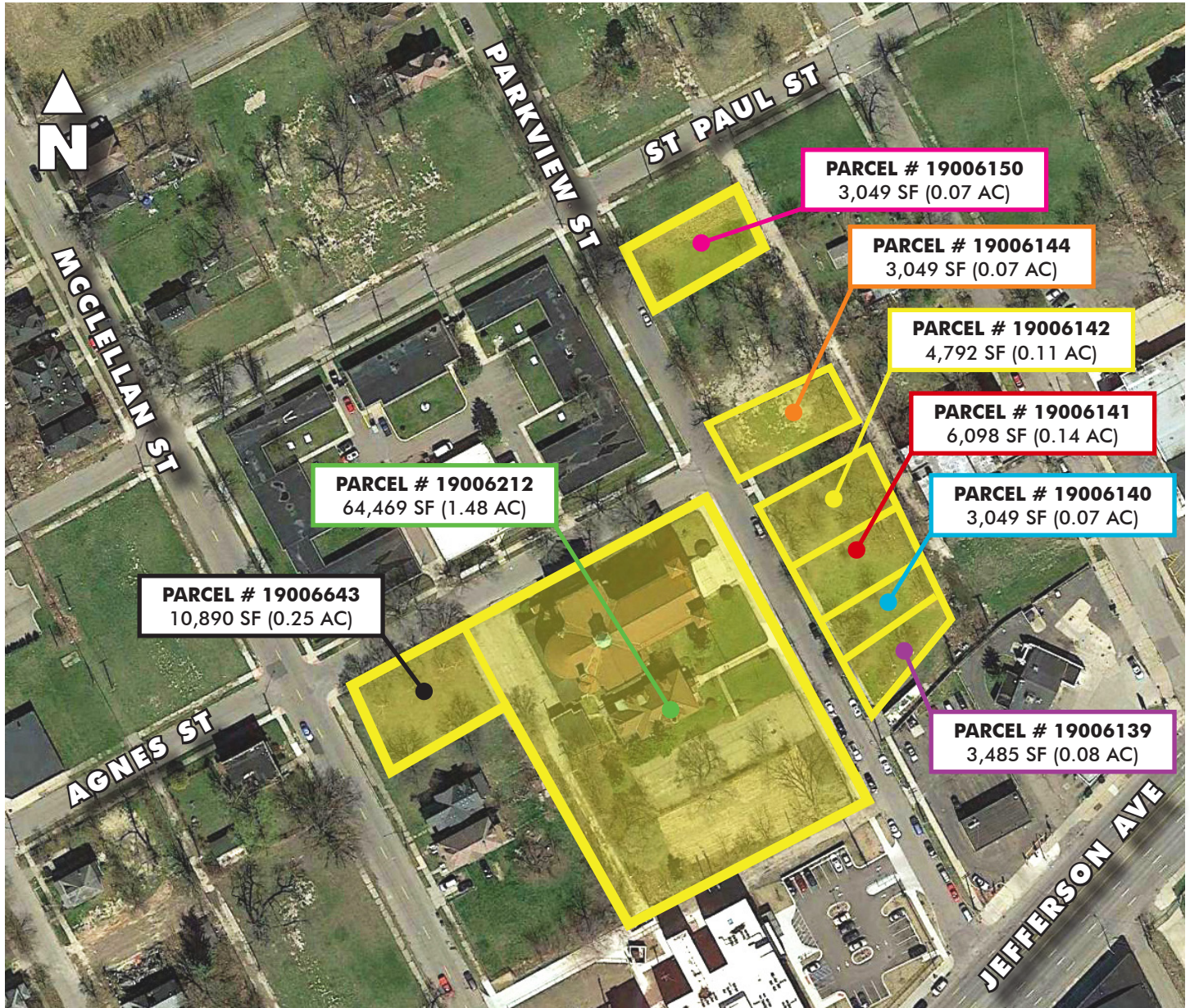


© 2018 CBRE, Inc. This information has been obtained from sources believed reliable. We have not verified it and make no guarantee, warranty or representation about it. Any projections, opinions, assumptions or estimates used are for example only and do not represent the current or future performance of the property. You and your advisors should conduct a careful, independent investigation of the property to determine to your satisfaction the suitability of the property for your needs. Photos herein are the property of their respective owners and use of these images without the express written consent of the owner is prohibited. CBRE and the CBRE logo are service marks of CBRE, Inc. and/or its affiliated or related companies in the United States and other countries. All other marks displayed on this document are the property of their respective owners.

FOR SALE GOOD SHEPARD

1265 PARKVIEW
DETROIT, MICHIGAN

DETAILED AERIAL



© 2018 CBRE, Inc. This information has been obtained from sources believed reliable. We have not verified it and make no guarantee, warranty or representation about it. Any projections, opinions, assumptions or estimates used are for example only and do not represent the current or future performance of the property. You and your advisors should conduct a careful, independent investigation of the property to determine to your satisfaction the suitability of the property for your needs. Photos herein are the property of their respective owners and use of these images without the express written consent of the owner is prohibited. CBRE and the CBRE logo are service marks of CBRE, Inc. and/or its affiliated or related companies in the United States and other countries. All other marks displayed on this document are the property of their respective owners.

FOR SALE GOOD SHEPARD

1265 PARKVIEW
DETROIT, MICHIGAN

RESIDENTIAL HIGH RISES



© 2018 CBRE, Inc. This information has been obtained from sources believed reliable. We have not verified it and make no guarantee, warranty or representation about it. Any projections, opinions, assumptions or estimates used are for example only and do not represent the current or future performance of the property. You and your advisors should conduct a careful, independent investigation of the property to determine to your satisfaction the suitability of the property for your needs. Photos herein are the property of their respective owners and use of these images without the express written consent of the owner is prohibited. CBRE and the CBRE logo are service marks of CBRE, Inc. and/or its affiliated or related companies in the United States and other countries. All other marks displayed on this document are the property of their respective owners.

FOR SALE GOOD SHEPARD

1265 PARKVIEW
DETROIT, MICHIGAN

PROPERTY PHOTOS



© 2018 CBRE, Inc. This information has been obtained from sources believed reliable. We have not verified it and make no guarantee, warranty or representation about it. Any projections, opinions, assumptions or estimates used are for example only and do not represent the current or future performance of the property. You and your advisors should conduct a careful, independent investigation of the property to determine to your satisfaction the suitability of the property for your needs. Photos herein are the property of their respective owners and use of these images without the express written consent of the owner is prohibited. CBRE and the CBRE logo are service marks of CBRE, Inc. and/or its affiliated or related companies in the United States and other countries. All other marks displayed on this document are the property of their respective owners.

www.cbre.com/aod

CBRE