

# LEASE OPPORTUNITY

**260 E. Ontario Avenue,  
Corona, CA 92879**



## CORONA SOUTH MAIN MEDICAL PLAZA

- Available suite size: 2,000 (+/-) s.f.
- Lot size: 10,843 (+/-) s.f.
- Excellent for medical uses
- Easy access to CA-91 and CA-15 freeways
- Full Service includes electricity and Janitorial Services.
- Close to Corona Regional Hospital

### KB Real Estate

CalBRE Lic- # 02034779

**Surjeet Bhatia (Kavita)** Commercial Sales &  
Leasing Broker

CalBRE Lic. #01895064

**Phone:** 909-233-8003

**Fax:** 909-912-8093

**Email:** Kavita@KavitaBhatia.com

**Address:**

13139 Central Ave., Suite G,  
Chino, CA 91710



Information was obtained from sources believed to be reliable but it is not guaranteed, all information is subject to change at any-time.

# LEASE OPPORTUNITY



Corona South Main Medical Plaza is a professional medical office building with an ideal location near the Main Street and Ontario Ave. intersection. The building is home to Compassion Cancer Care Center, Dental Care of Corona, California Cosmetics, Inland Empire Imaging, and more.

The vacant unit is a fully built-out turn-key medical office with multiple exam rooms, nurse's station, procedure rooms, and doctor's office. In addition, there are shared waiting rooms, breakrooms, and multiple restrooms. This is a full service office with electricity and janitorial services provided.

Suite is located within the Compassion Care Center office condo. Rent includes common area access: waiting area, kitchen, restrooms, and front desk space.

## KB Real Estate

CalBRE Lic. # 02034779

**Gurjeet Bhatia (Kavita)** Commercial Sales &  
Leasing Broker

CalBRE Lic. #01895064

Phone: 909-233-8003

Fax: 909-912-8093

Email: [Kavita@KavitaBhatia.com](mailto:Kavita@KavitaBhatia.com)

Address:

13139 Central Ave., Suite G,  
Chino, CA 91710



# LEASE OPPORTUNITY

## Multi-Tenant Medical Office Building



**Available Suite**

**Area**

**Rent/ month**

- Suite 101

2,000 (+/-) s.f.

\$ 2.49/ s.f. per month, full service

### **KB Real Estate**

CalBRE Lic- # 02034779

**Gurjeet Bhatia (Kavita)** Commercial Sales &  
Leasing Broker

CalBRE Lic. #01895064

**Phone:** 909-233-8003

**Fax:** 909-912-8093

**Email:** Kavita@KavitaBhatia.com

**Address:**

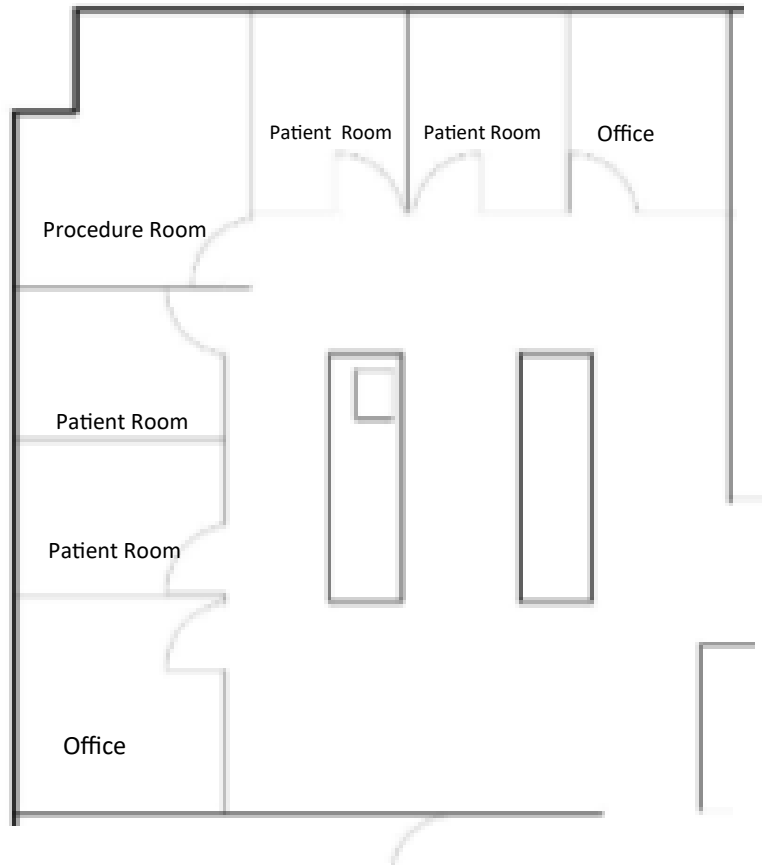
13139 Central Ave., Suite G,  
Chino, CA 91710





# LEASE OPPORTUNITY

## Layout



**Suite 101– 2,000(+/-) s.f**

Not Drawn to scale. Exact measurements and proportions may vary. Tenant/ buyer to conduct own due diligence.

### **KB Real Estate**

CalBRE Lic- # 02034779

**Gurjeet Bhatia (Kavita)** Commercial Sales &  
Leasing Broker

CalBRE Lic. #01895064

**Phone:** 909-233-8003

**Fax:** 909-912-8093

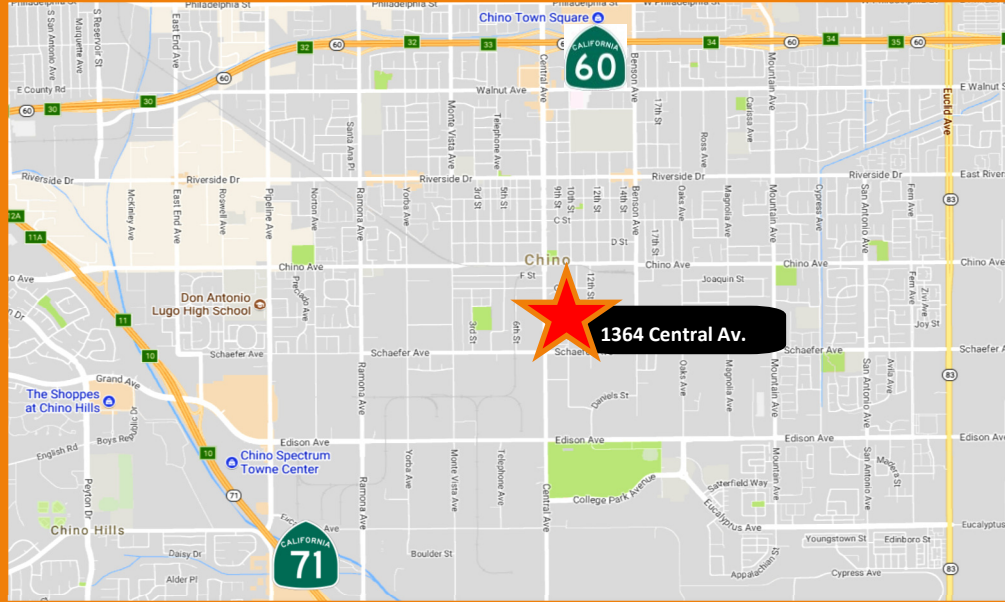
**Email:** Kavita@KavitaBhatia.com

**Address:**

13139 Central Ave., Suite G,  
Chino, CA 91710



# LEASE OPPORTUNITY



## KB Real Estate

CalBRE Lic. # 02034779

**Surjeet Bhatia (Kavita)** Commercial Sales & Leasing Broker

CalBRE Lic. #01895064

Phone: 909-233-8003

Fax: 909-912-8093

Email: Kavita@KavitaBhatia.com

Address:

13139 Central Ave., Suite G,  
Chino, CA 91710



# LEASE OPPORTUNITY

Zoning: COMMERCIAL SERVICE (CS)

according to City of Chino

<http://www.cityofchino.org/home/showdocument?id=14147>

Population	1 Mile	3 Mile	5 Mile
2017 Estimate Population:	11,097	122,011	342,196
Population Growth 2017-2022:	0.70%	0.89%	0.79%
Median Age	31.1	34.8	32.8

## Households

2017 Estimate Households:	2,744	33,655	91,905
HH Growth 2017-2022:	0.60%	0.79%	0.72%
2017 Median Household Income:	\$47,574	\$75,946	\$67,318

### KB Real Estate

CalBRE Lic. # 02034779

**Gurjeet Bhatia (Kavita)** Commercial Sales &  
Leasing Broker

CalBRE Lic. #01895064

**Phone:** 909-233-8003

**Fax:** 909-912-8093

**Email:** Kavita@KavitaBhatia.com

**Address:**

13139 Central Ave., Suite G,  
Chino, CA 91710

