

FOR LEASE

FLAMINGO PROMENADE

10198 W FLAMINGO ROAD,
LAS VEGAS, NV 89147



PHILLIP DUNNING, CCIM
ASSOCIATE VICE PRESIDENT
+1 702 836 3766
phillip.dunning@colliers.com

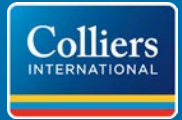
3960 Howard Hughes Parkway, Suite 150
Las Vegas, NV 89169
www.colliers.com/lasvegas



FOR LEASE

FLAMINGO PROMENADE

10198 W FLAMINGO ROAD, LAS VEGAS, NV 89147

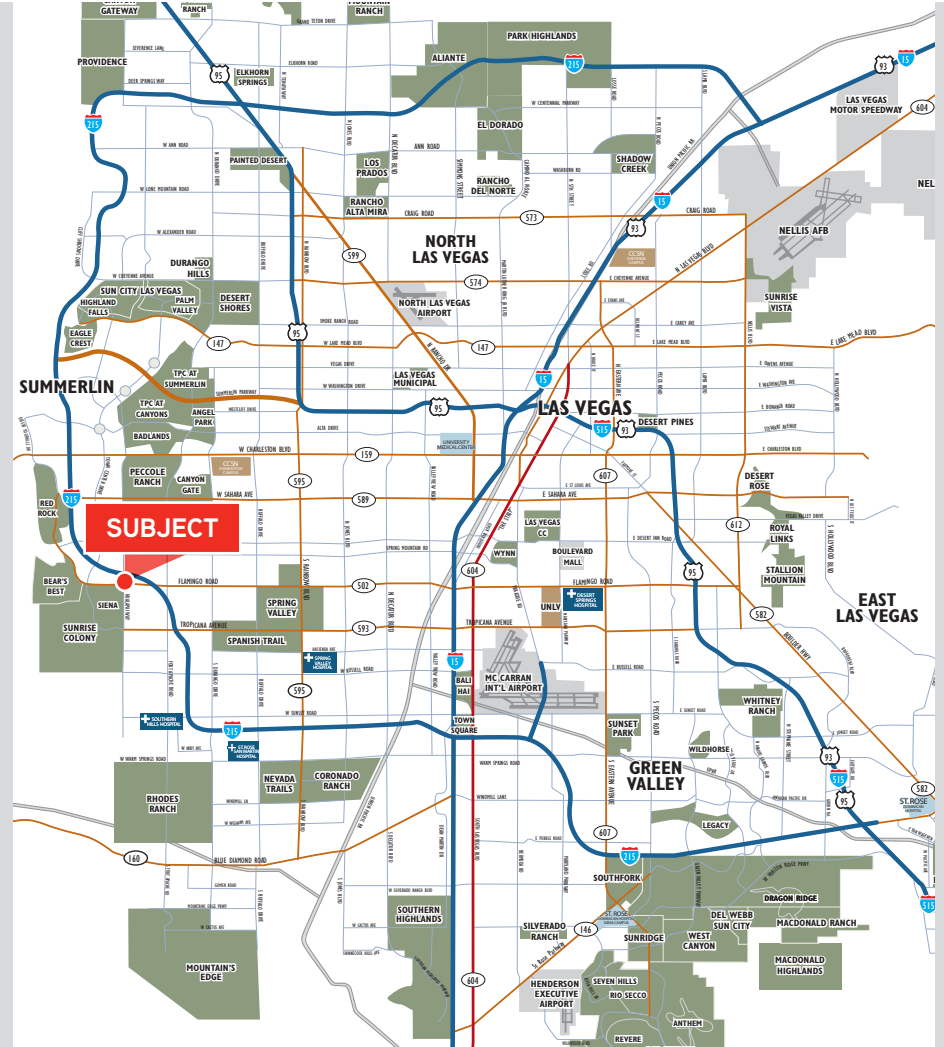


PROPERTY INFORMATION

Flamingo Promenade is an Albertson's anchored shopping center in Southwest Las Vegas, NV. The shopping center is over 93,000 square feet of retail space with single and multi-tenant pads along West Flamingo Road and South Hualapai Way. The center has great ingress and egress from both Flamingo Road and Hualapai Way and was designed for good traffic flow in mind.

LOCATION

Flamingo Promenade is located at the northwest corner of West Flamingo Road and South Hualapai Way just west of the CC-215 and Flamingo interchange. This shopping center is in the highly desired southwest submarket of the Las Vegas MSA. This neighborhood market serves the surrounding master-planned subdivisions without the Summerlin restrictions such as; Sienna, Willow, Summerlin, The Ridges, Peccole Ranch, The Lakes and many others.



PHILLIP DUNNING, CCIM
ASSOCIATE VICE PRESIDENT
+1 702 836 3766
phillip.dunning@colliers.com

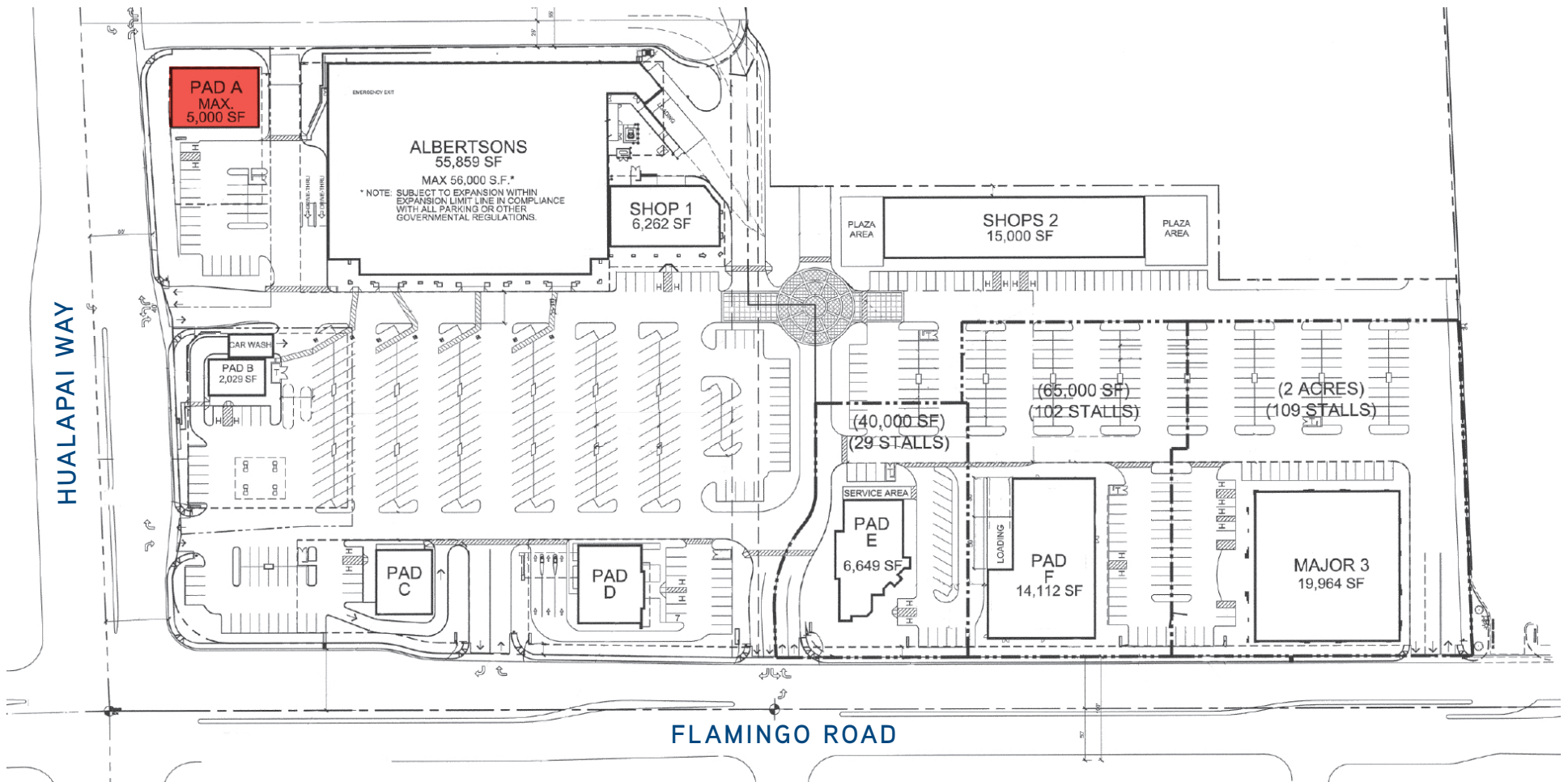
3960 Howard Hughes Parkway, Suite 150
Las Vegas, NV 89169
www.colliers.com/lasvegas

The information furnished has been obtained from sources we deem reliable and is submitted subject to errors, omissions and changes. Although Colliers Nevada, LLC has no reason to doubt its accuracy, we do not guarantee it. All information should be verified by the recipient prior to lease, purchase, exchange or execution of legal documents.

FOR LEASE
FLAMINGO PROMENADE
10198 W FLAMINGO ROAD, LAS VEGAS, NV 89147



SITE PLAN

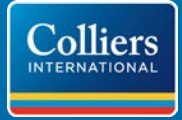


PHILLIP DUNNING, CCIM
ASSOCIATE VICE PRESIDENT
+1 702 836 3766
phillip.dunning@colliers.com

3960 Howard Hughes Parkway, Suite 150
Las Vegas, NV 89169
www.colliers.com/lasvegas

FOR LEASE FLAMINGO PROMENADE

10198 W FLAMINGO ROAD, LAS VEGAS, NV 89147

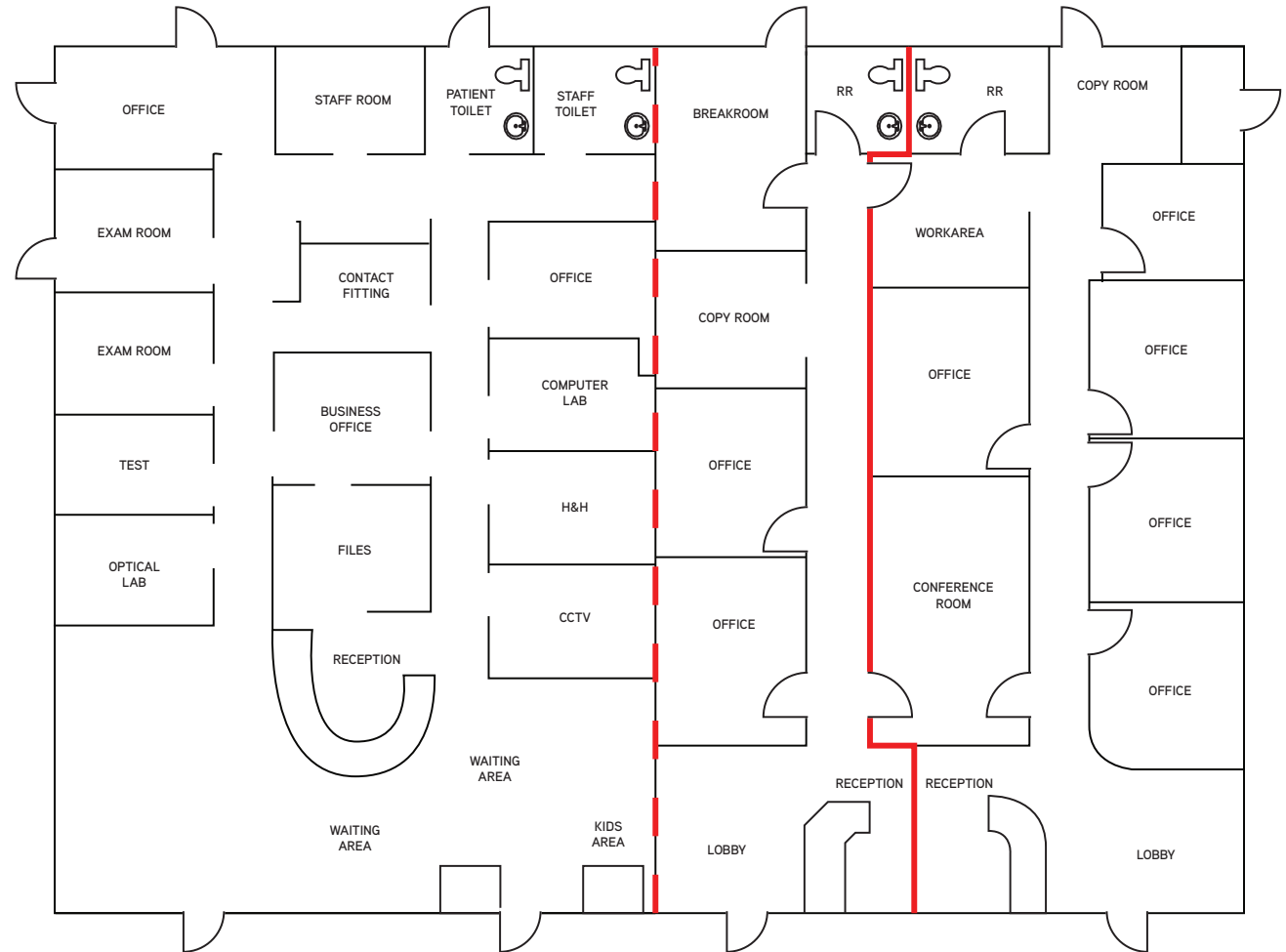


FLOOR PLAN

- > Suite A-1/A-2 is ±2,494 SF
- > Suite A-3/A-3P is ±2,506 SF

**Can be combined for ±5,000 SF.*

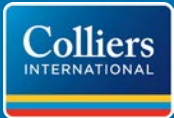
- - - Demising Wall
- Potential Demising Wall



PHILLIP DUNNING, CCIM
ASSOCIATE VICE PRESIDENT
+1 702 836 3766
phillip.dunning@colliers.com

3960 Howard Hughes Parkway, Suite 150
Las Vegas, NV 89169
www.colliers.com/lasvegas

FOR LEASE
FLAMINGO PROMENADE
10198 W FLAMINGO ROAD, LAS VEGAS, NV 89147



PROPERTY PHOTOS



PHILLIP DUNNING, CCIM
ASSOCIATE VICE PRESIDENT
+1 702 836 3766
phillip.dunning@colliers.com

3960 Howard Hughes Parkway, Suite 150
Las Vegas, NV 89169
www.colliers.com/lasvegas

The information furnished has been obtained from sources we deem reliable and is submitted subject to errors, omissions and changes. Although Colliers Nevada, LLC has no reason to doubt its accuracy, we do not guarantee it. All information should be verified by the recipient prior to lease, purchase, exchange or execution of legal documents.