

3 WOOSTER STREET – Unit 1

BETWEEN CANAL AND GRAND STREETS

APPROX. SIZE:

Ground Floor	1,620 SF
Lower Level	957 SF
Total	2,577 SF

APPROX. FRONTAGE:

22 Feet

APPROX. CEILING HEIGHT:

Ground Floor	19 FT
--------------	-------

ASKING RENT:

Upon Request

PREVIOUS TENANT:

Art gallery

POSSESSION:

Immediate

TERM:

Negotiable

COMMENTS:

- Fully built space
- SoHo Art Materials currently occupies Unit 2; it has 2,020 SF on ground and 2,052 SF on selling lower level. SoHo Art Materials can be moved to Unit 1, if your tenant requires a larger space.

NEIGHBORS:

Soho Art Materials, Melissa Joy Manning, Luceplan, REPUBLIC of Fritz Hansen, Mystique Boutique, Sheraton Tribeca, Tribeca Bagels

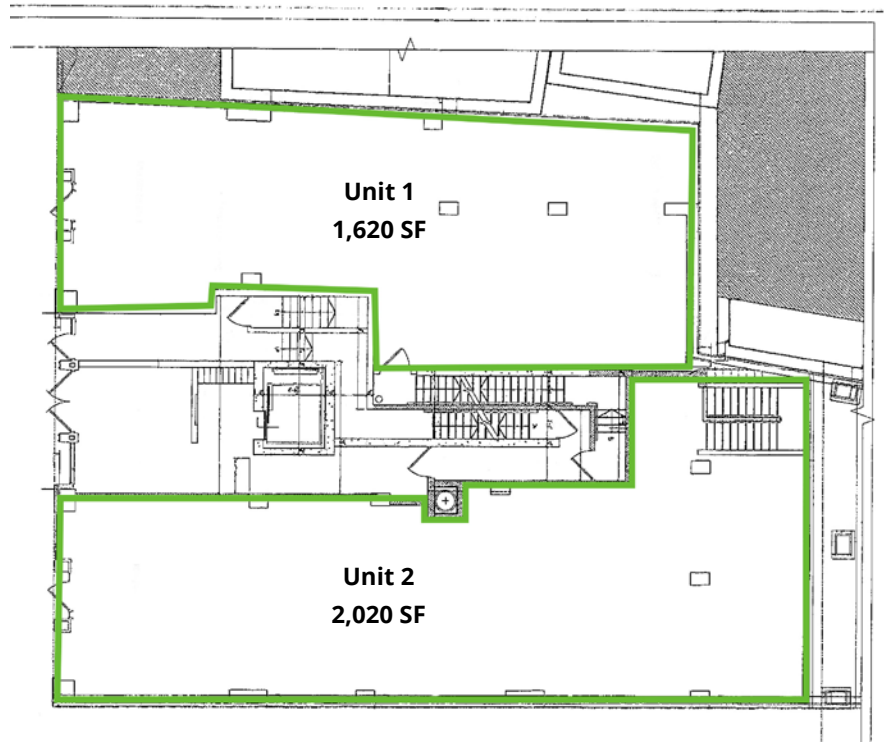


Although all information furnished regarding property for sale, rental or financing is from sources deemed reliable such information has not been verified, and no express representation is made nor is any to be implied as to the accuracy thereof and it is submitted subject to errors, omissions, change of price, rental or other conditions, prior sale, lease or financing, or withdrawal without notice. No warranties or representations are made as to the condition of the property or any hazards contained therein nor are any to be implied.

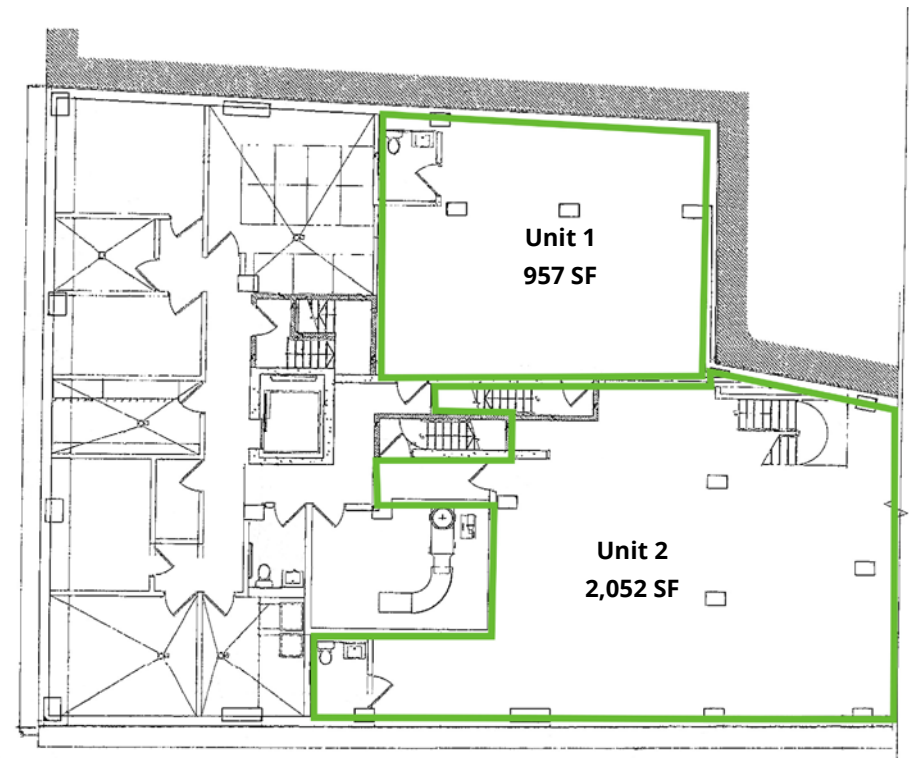
3 WOOSTER STREET

BETWEEN CANAL AND GRAND STREETS

Ground Floor



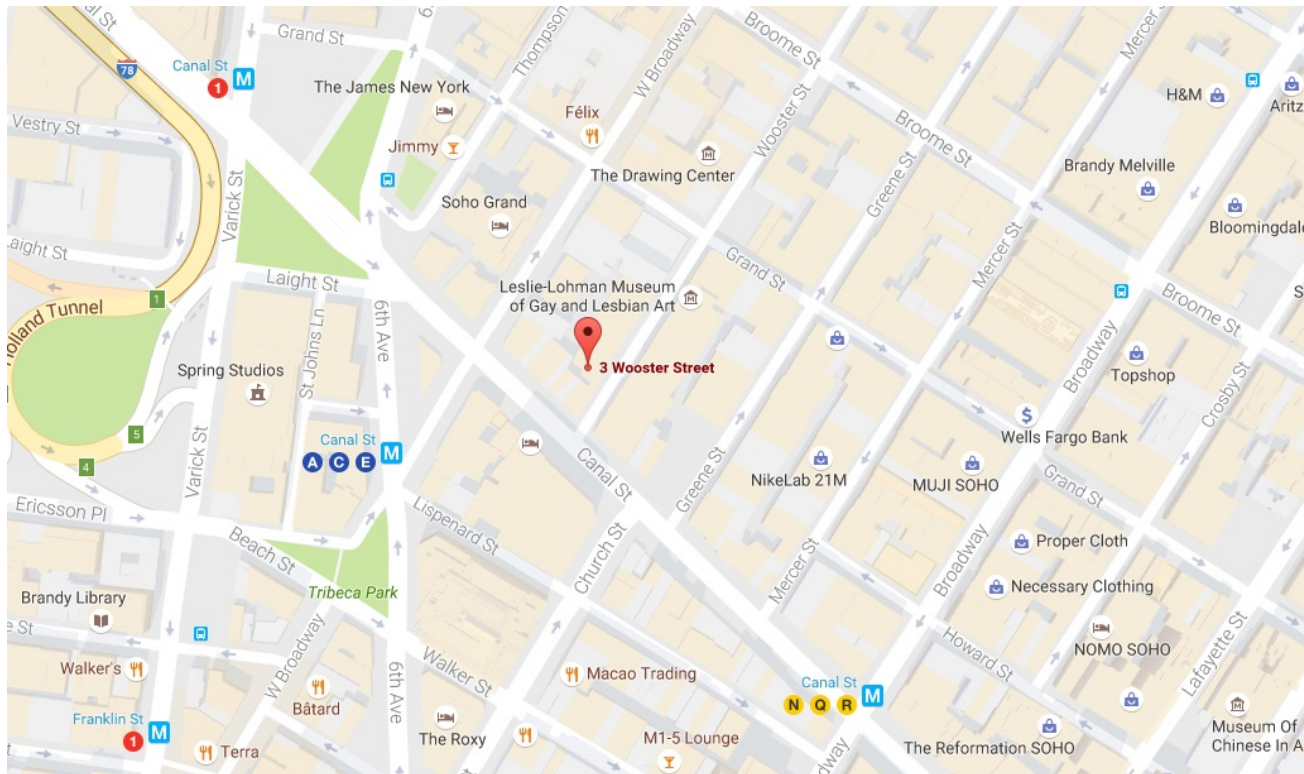
Selling Lower Level



Although all information furnished regarding property for sale, rental or financing is from sources deemed reliable such information has not been verified, and no express representation is made nor is any to be implied as to the accuracy thereof and it is submitted subject to errors, omissions, change of price, rental or other conditions, prior sale, lease or financing, or withdrawal without notice. No warranties or representations are made as to the condition of the property or any hazards contained therein nor are any to be implied.

3 WOOSTER STREET

BETWEEN CANAL AND GREENE STREETS



For further information, please contact exclusive listing agents:

CHRISTINE EMERY
cemery@mhpny.com
212-763-3599

YAIR H. STAAB
ystaab@mhpny.com
212-763-4422

Although all information furnished regarding property for sale, rental or financing is from sources deemed reliable such information has not been verified, and no express representation is made nor is any to be implied as to the accuracy thereof and it is submitted subject to errors, omissions, change of price, rental or other conditions, prior sale, lease or financing, or withdrawal without notice. No warranties or representations are made as to the condition of the property or any hazards contained therein nor are any to be implied.