



COMING SOON



# 350

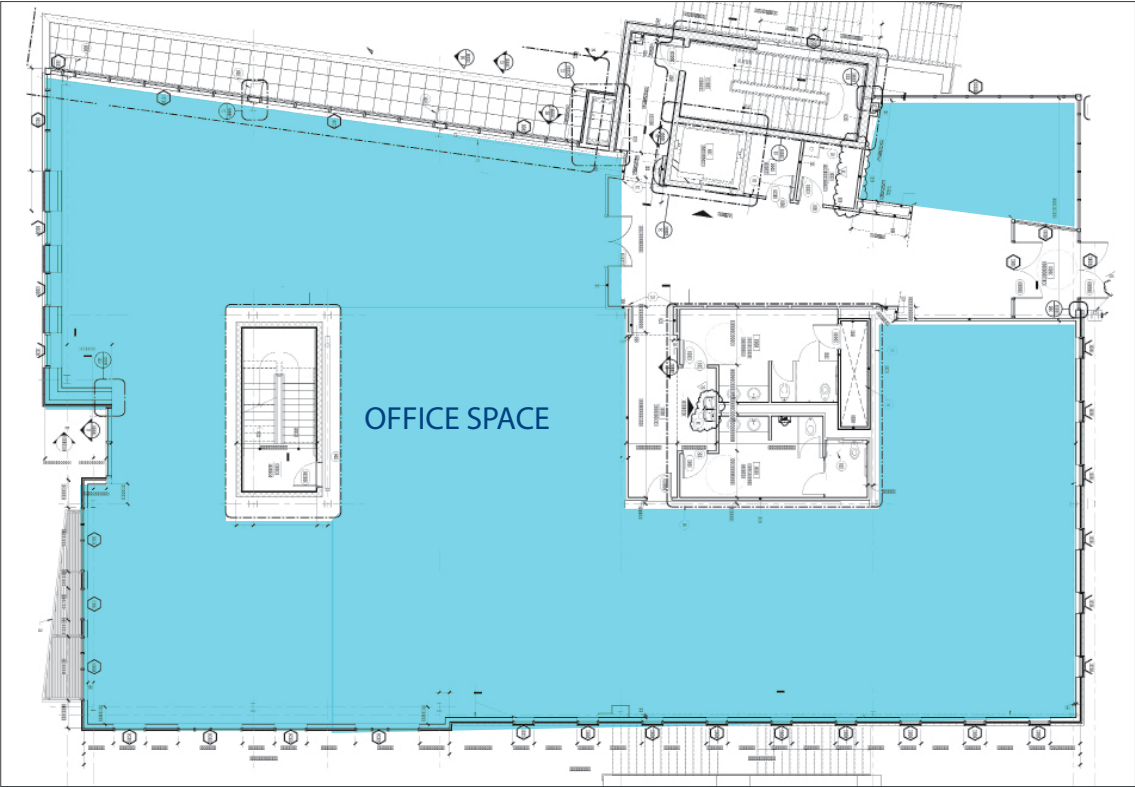
WESTFIELD ROAD  
NOBLESVILLE, INDIANA



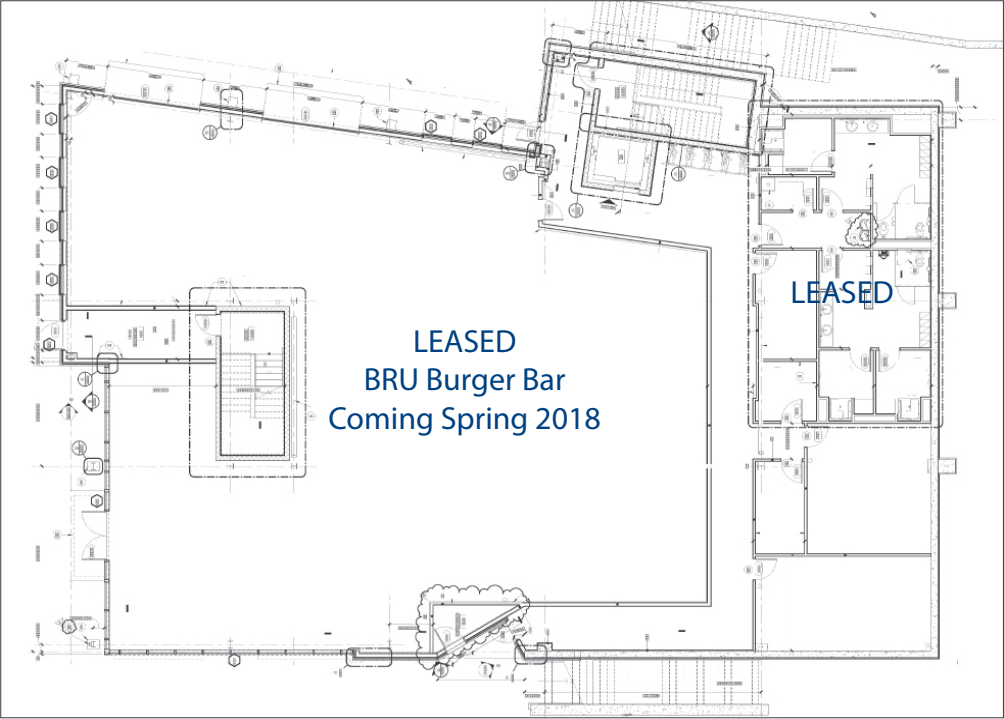
OFFICE SPACE AVAILABLE

# FLOOR PLAN

## SECOND FLOOR



## FIRST FLOOR



# HIGHLIGHTS

## PROJECT HIGHLIGHTS

- ✓ New Construction 42,000 SF Class A building (4 floors)
- ✓ Bru Burger Bar opening spring of 2018
- ✓ Full floor available for office user (up to ±9,000 SF on the 2nd floor)
- ✓ Owner occupied
- ✓ Exterior signage available
- ✓ On-site parking
- ✓ Bike storage available

## ADDITIONAL HIGHLIGHTS

- ✓ Prime location in the Heart of Hamilton County
- ✓ Adjacent to the new Federal Hill Park & Concert Venue
- ✓ Walking distance to White River & Noblesville's Downtown Square
- ✓ Directly across the street from Riverview Health
- ✓ Minutes to future Midland Trace Bike | Walking Trail



**Federal Hill Commons**  
 (Under Construction)  
 Future location of a beautiful  
 amphitheater, market & event space



**Leasing Contacts**

**Nancy Merritt**  
 317.210.8804  
 nancy.merritt@avisonyoung.com

**Andrew Martin, SIOR, CCIM**  
 317.210.8805  
 andrew.martin@avisonyoung.com



**Bill Ehret, SIOR**  
 317.210.8808  
 bill.ehret@avisonyoung.com

