

NOHO RETAIL

647 BROADWAY

NEW YORK, NY 10012



APPROXIMATE SIZE

GROUND FLOOR: 2,000 SF

BASEMENT SIZE: 2,000 SF

FRONTAGE

18 FEET ON BROADWAY

NEIGHBORING TENANTS

ORIGINAL PENGUIN,
ADIDAS, BEST BUY,
ATRIUM, SWATCH,
EQUINOX (COMING SOON),
CRATE AND BARREL,
TD BANK, URBAN OUTFITTERS,
STARBUCKS, IT' SUGAR
AND SPRINT.

DESCRIPTION

PRIME NOHO RETAIL LOCATED TWO BLOCKS
FROM SOHO AROUND THE CORNER FROM
BLEECKER ST. AND
BROADWAY / LAFAYETTE
SUBWAY STATIONS SERVICING 6, B ,D ,F M
LINES.

TERM

NEGOTIABLE

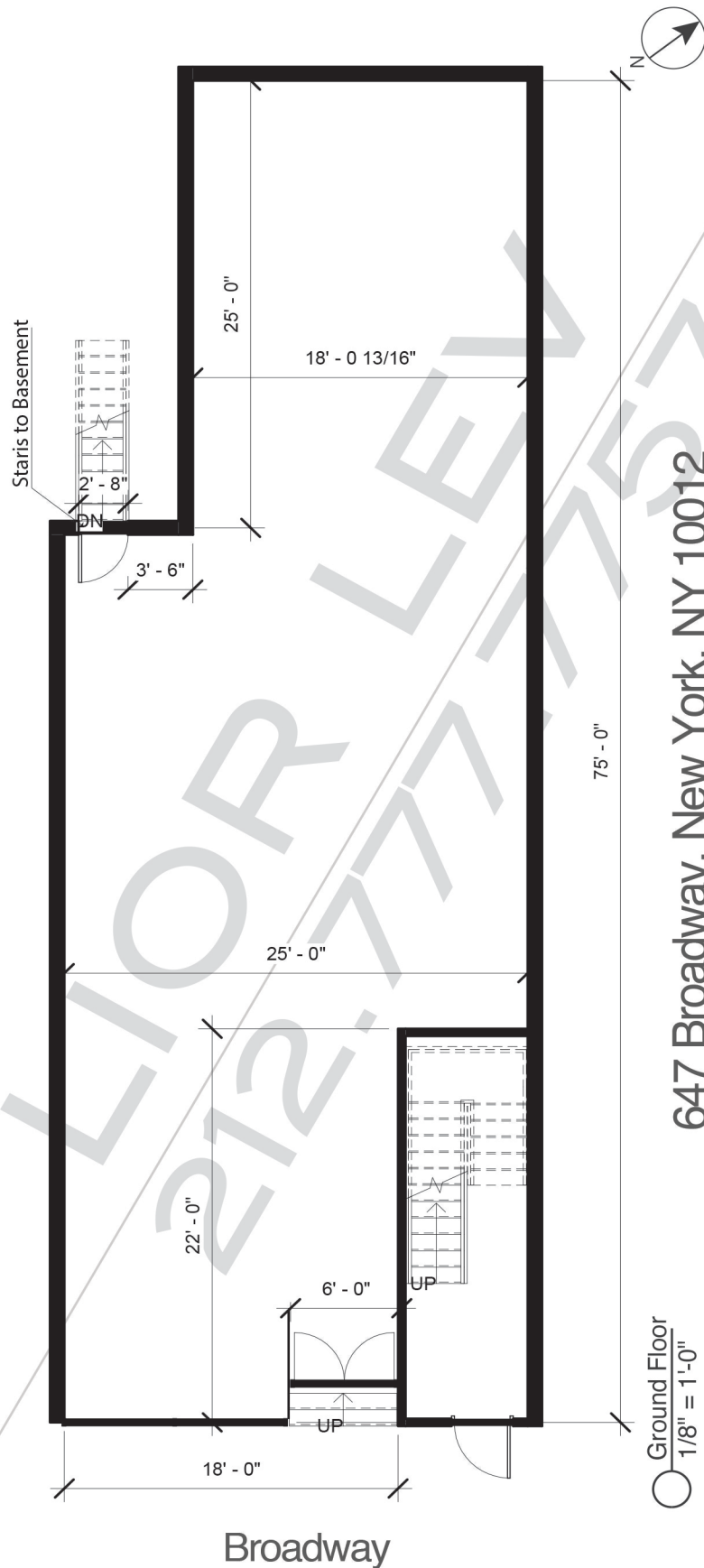
POSSESSION

IMMEDIATE

SITE STATUS

ZIGI





The unit square footage, layout and overall dimensions on this floor plan are approximate within reasonable tolerances and are based on field measurements.

All information supplied is from sources deemed reliable and is furnished subject to errors, omissions, modifications, removal of the listing from sale or lease, and to any listing conditions, including the rates and manner of payment of commissions for particular offerings imposed by Oxford Property Group or principals, the terms of which are available to principals or duly licensed brokers. This information may include estimates and projections prepared by Oxford Property Group with respect to future events, and these future events may or may not actually occur. Such estimates and projections reflect various assumptions concerning anticipated results. While Oxford Property Group believes these assumptions are reasonable, there can be no assurance that any of these estimates and projections will prove to have been correct. Therefore, actual results may vary materially from these forward-thinking estimates and projections. Any square footage dimensions set forth are approximate.