

Newly available commercial space

Ideal for office/showroom

Location:

12 West 29th Street
New York City, NY 10001
5th avenue and Broadway

In the center of the NOMAD district and on the same street as the ACE Hotel, Stumptown Coffee, and The Breslin with views of the Empire State building on Street with Landmark church and building

Approximate Street Frontage:

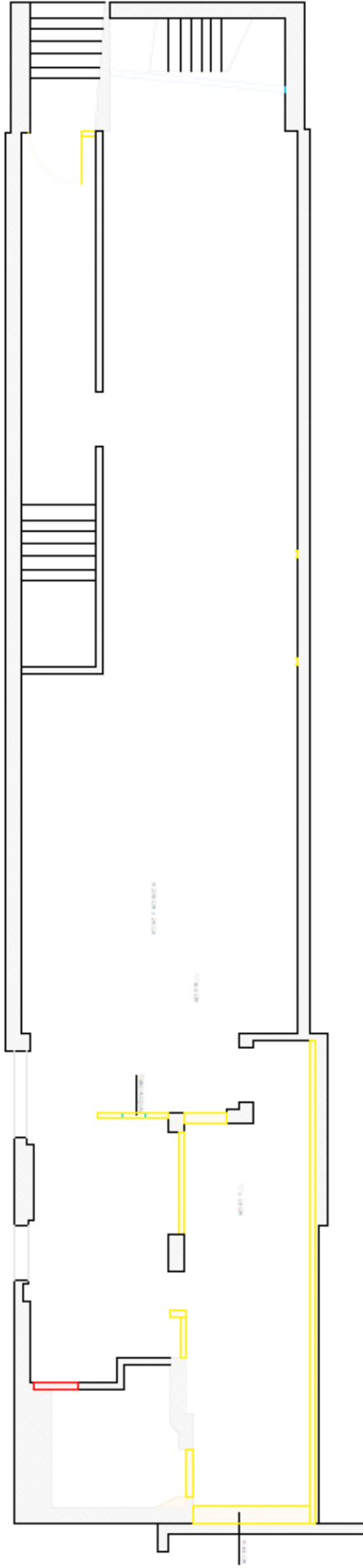
2,000 SF on First Floor
Ceilings: 9' with up to 15' at back

Rent: \$12,000-\$13,000 depending on type of business and broker fee

Recently redeveloped space, with new floors and windows, skylight, exposed brick, Central AC and heating.

Space is ideal for professional office, architect and designer showroom, tech or medical office.
Former architectural/design school

For further information, please contact
Tracey: 212-689-0595





Width: 20 feet





Skylight in back area with a bathroom off to right