

LOGAN BUILDING

500 Union Street | SEATTLE, WASHINGTON





amenities abound

NEAR-BY AMENITIES



LOGAN BUILDING FACTS

THE BUILDING	10 story office building totaling approximately 128,998 SF
YEAR BUILT	1959
RBA	128,998 SF
BUILDING AMENITIES	Building Conference Room, Bike storage facilities, Shower facility, and Specialty's Cafe & Bakery.

AREA AMENITIES

The building is located in the heart of Downtown Seattle's Retail Core; local to area recreation, hotels, theaters, restaurants, fitness facilities & retail shops.

RENTAL RATES

\$39.00 - \$45.00 per rentable square foot, Full Service

OWNERSHIP/ PROPERTY MANAGEMENT

Unico Properties



LOGAN BUILDING


500 Union Street | SEATTLE, WASHINGTON

BUILDING FEATURES

- Located on the corner of Fifth & Union, in the heart of Seattle's Retail Core, The Logan Building is situated perfectly in downtown Seattle for your business.
- The lobby renovation is now complete and helps to create a modern feel for tenants and their guests! Tenants will enjoy **newly modernized, ultra-efficient, elevators.**
- Close to retail outlets, restaurants and easy I-5 ingress / egress, The Logan Building will surpass everyday workplace needs.
- Recently renovated common areas include a building conference center to help create a great work environment for your business.
- Retailers at the base of the building are a newly remodeled and expanded Specialty's Café & Bakery and Charles Schwab.
- Bike storage / Shower facility



AVAILABLE SUITES

Floor	Suite	RSF	Available Date	Comments
7	710	2,472	Now	Northeast corner suite with two private offices, conference room, open space, and kitchen area.
6	600	2,545	Now	Mix of private offices, conference rooms, and common spaces.
4	435	4,477	6/1/18	Wide open SW corner space.
4	410	3,268	Now	NW corner space; lobby exposure, corner suite.  Virtual Tour available at ow.ly/N5Yi30gCSIQ
4	402	2,518	Now	SE corner space; open work space with kitchenette; new ceiling, lighting, and flooring. Move-in ready.

LOGAN BUILDING

500 Union Street | SEATTLE, WASHINGTON 98101



Union Street

central location



Damon McCartney
(206) 838-7633
mccartney@broderickgroup.com

Oscar Oliveira
(206) 838-7637
oscar@broderickgroup.com

Broderick Group, Inc.
601 Union Street
Suite 1606
Seattle, Washington 98101
main: 206. 838. 5775
www.broderickgroup.com



The information contained herein has been given to us by the owner or sources which we deem reliable. We have no reason to doubt its accuracy, but we do not guarantee it. Prospective tenants should carefully verify all information contained herein.

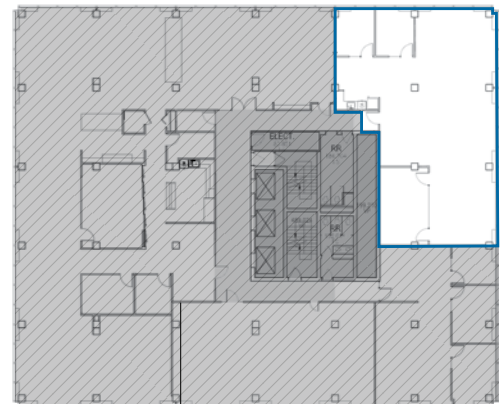
Suite 710 | RENDERING

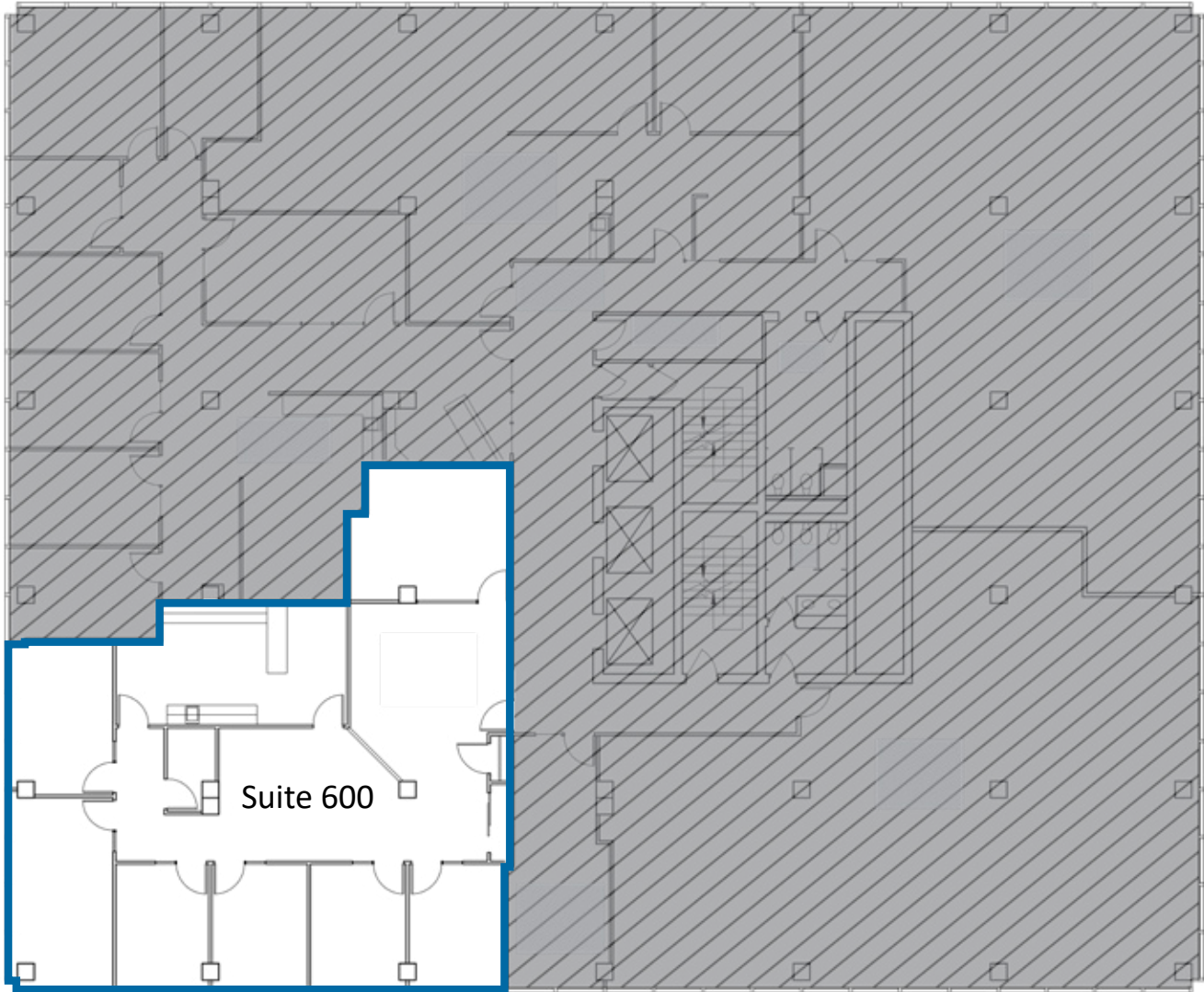
2,472 RSF



Suite Features

- Northeast corner suite
- Two private offices
- Conference room
- Open space
- Kitchen
- Available now





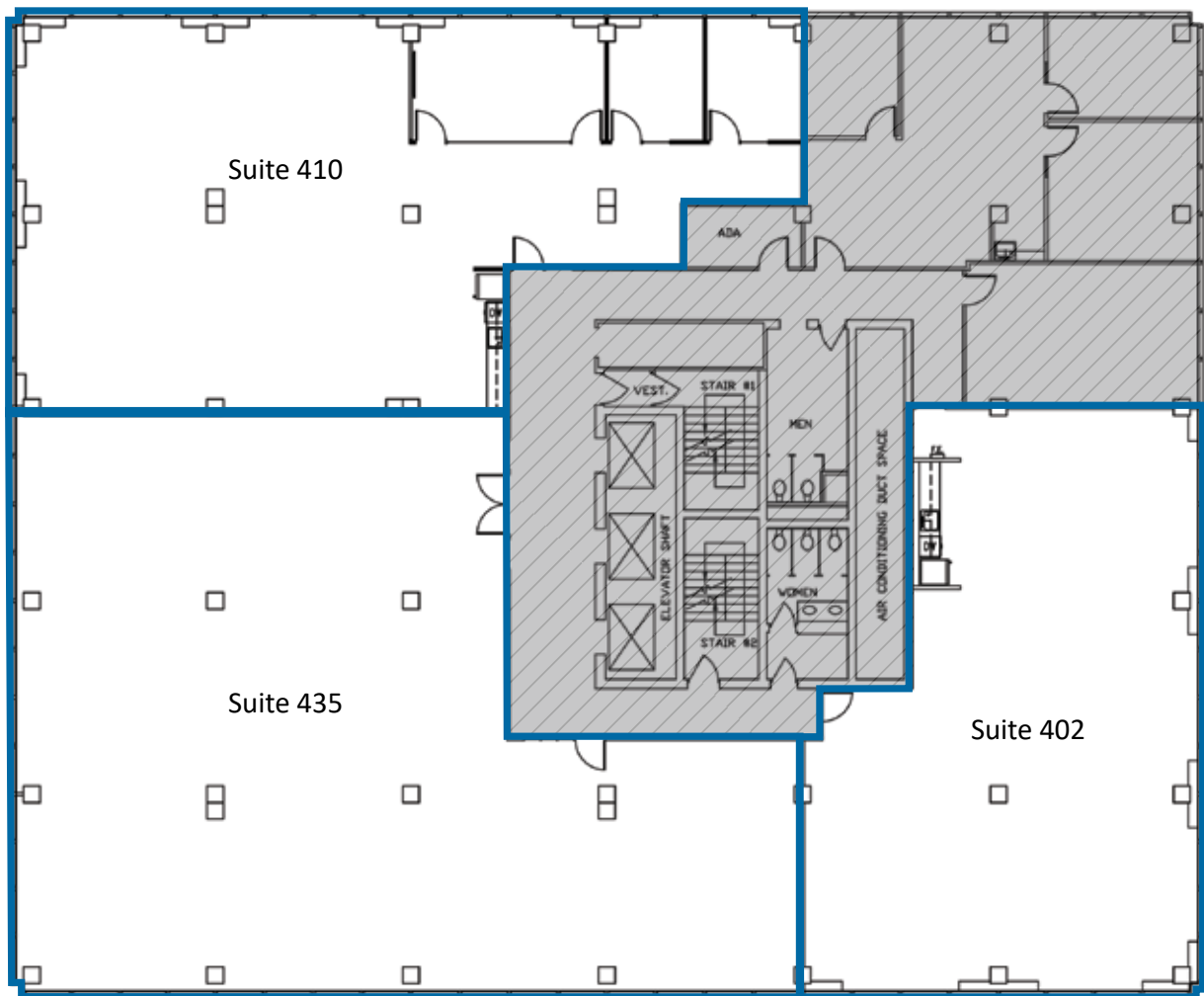
Suite 600

2,545 RSF

- Private offices
- Conference room
- Available now

LOGAN BUILDING

500 Union Street | SEATTLE, WASHINGTON



Suite 410

3,268 RSF

- NW corner space
- Ready for tenant improvements



Virtual Tour available at ow.ly/N5Yi30gCSIQ

Suite 435

4,477 RSF

- Available 6/1/18
- SW corner space
- Wide open work space

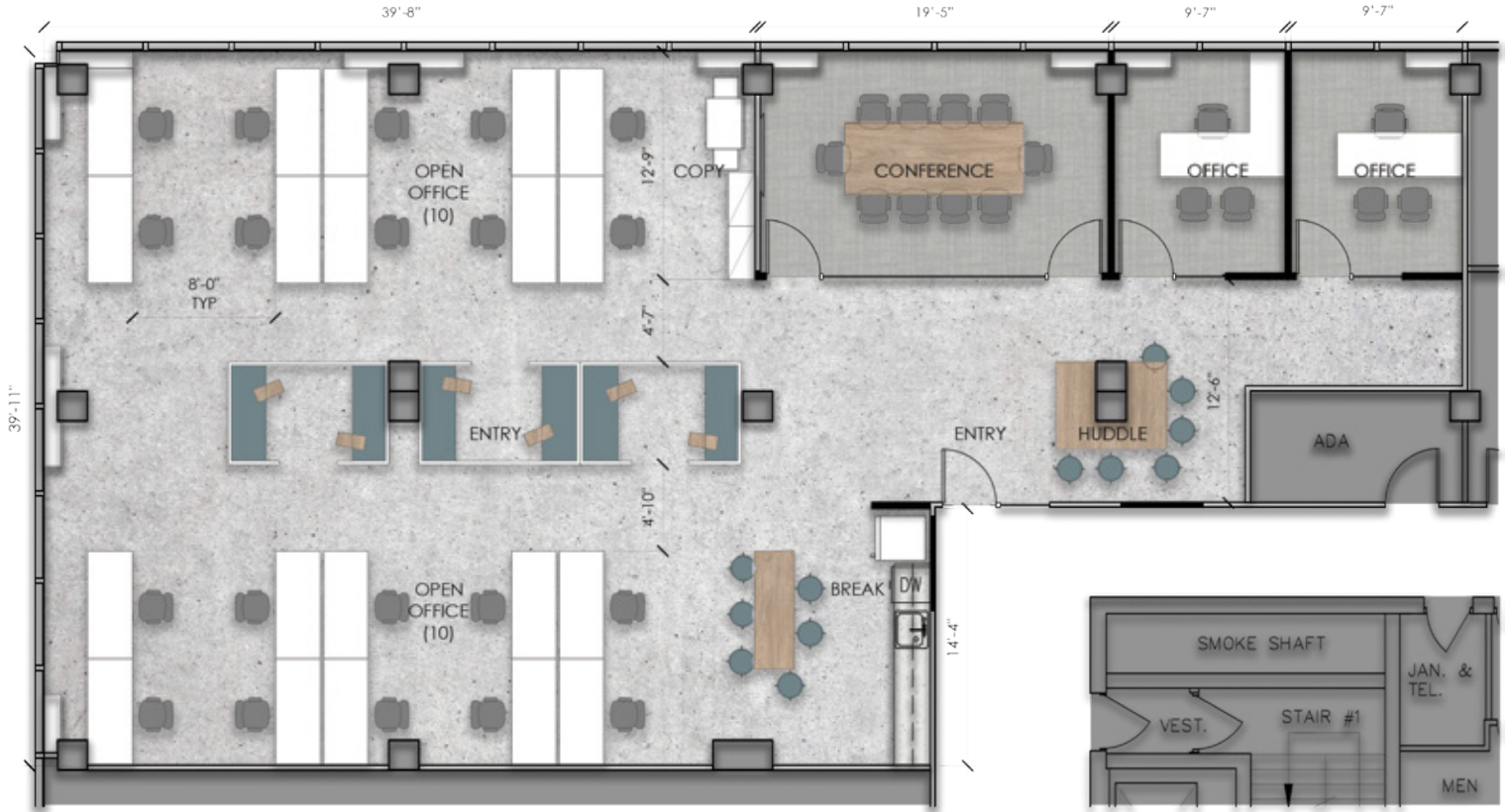
Suite 402

2,518 RSF

- SE corner space
- Open work space
- Kitchenette
- New ceiling, lighting, and flooring
- Move-in ready

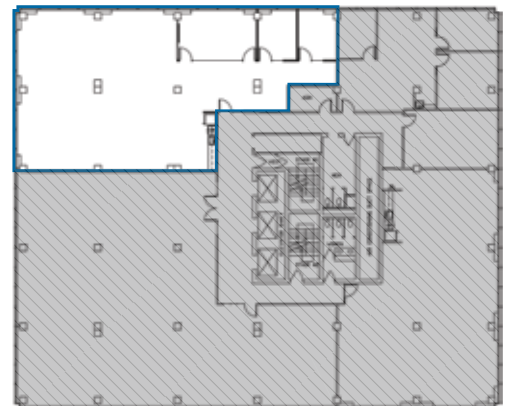
Suite 410 | RENDERINGS

3,268 RSF



Suite Features

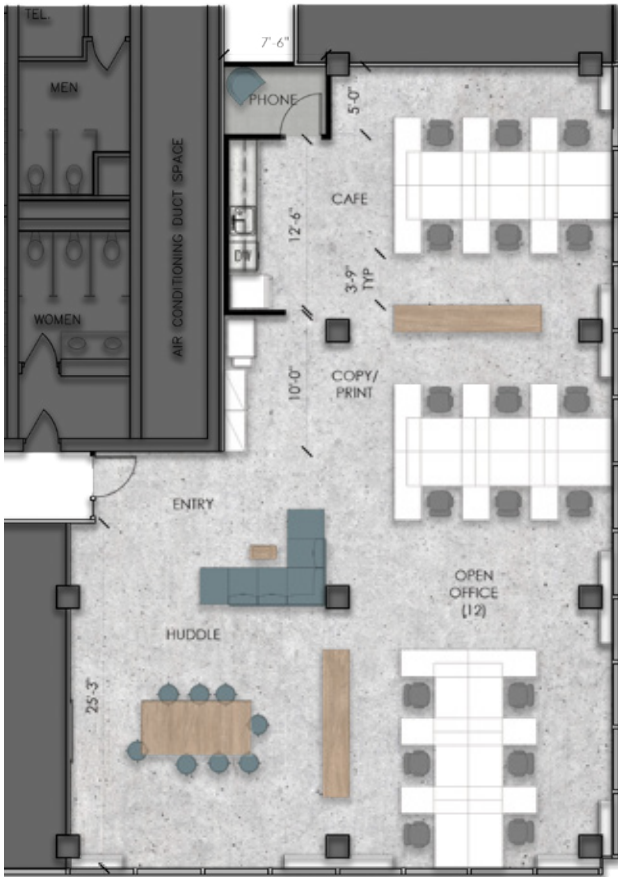
- SE corner space
- Open work space
- Kitchenette
- New ceiling, lighting, and flooring
- Move-in ready



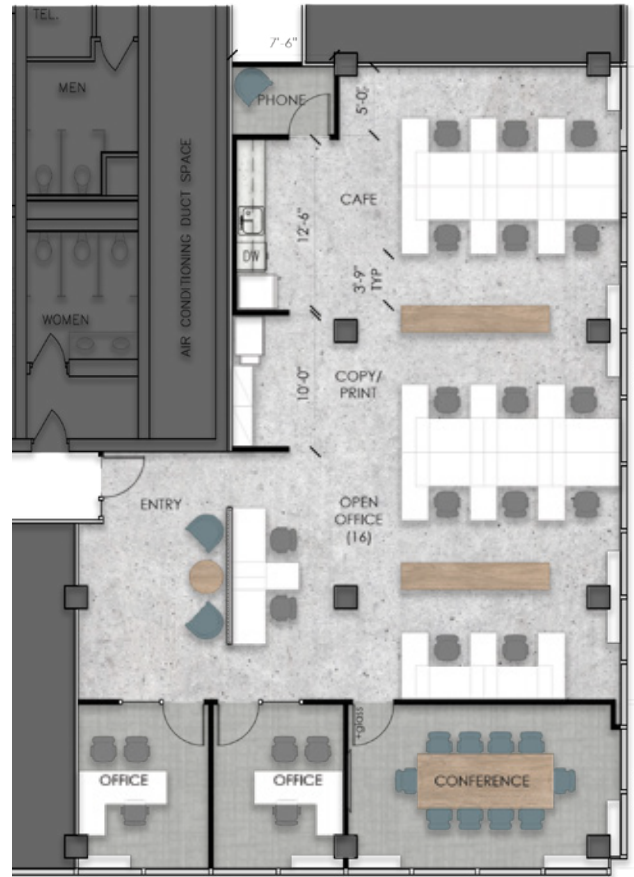
Suite 402 | RENDERINGS

2,518 RSF

Option A



Option B



Suite Features

- SE corner space
- Open work space
- Kitchenette
- New ceiling, lighting, and flooring
- Move-in ready

