

NEW LISTING



CHASE ANCHORED CENTER FOR LEASE IN ALTADENA

NWC Lake Avenue & Mendocino Street

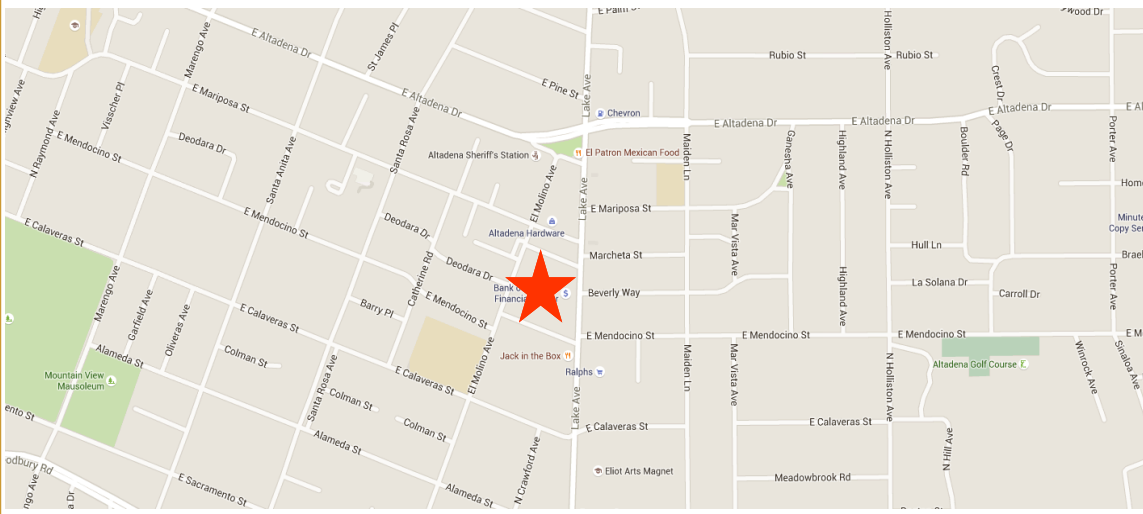
FEATURES

- Approx. 2,000 SQ FT Restaurant Space
- Approx. 2,000 SQ FT Retail/ Medical/Office Space
- Join Chase Bank
- Excellent
- Ample Parking
- Monument Signage

AREA AMENITIES

- Prime Altadena Location
- Excellent Demographics
- Strong Traffic Counts
- Countless National Retailers in Immediate Vicinity

**2333 N. Lake Ave.
Altadena, CA 91001**



CONTACT...

Jason Ehrenpreis x213
CA Real Estate Lic # 01741961
Leasing Agent
Jason@cbm1.com

Geoff Grossman x235
CA Real Estate Lic # 01265002
Leasing Agent
Geoff@cbm1.com

(310) 575-1517
(310) 575-1147 Fax

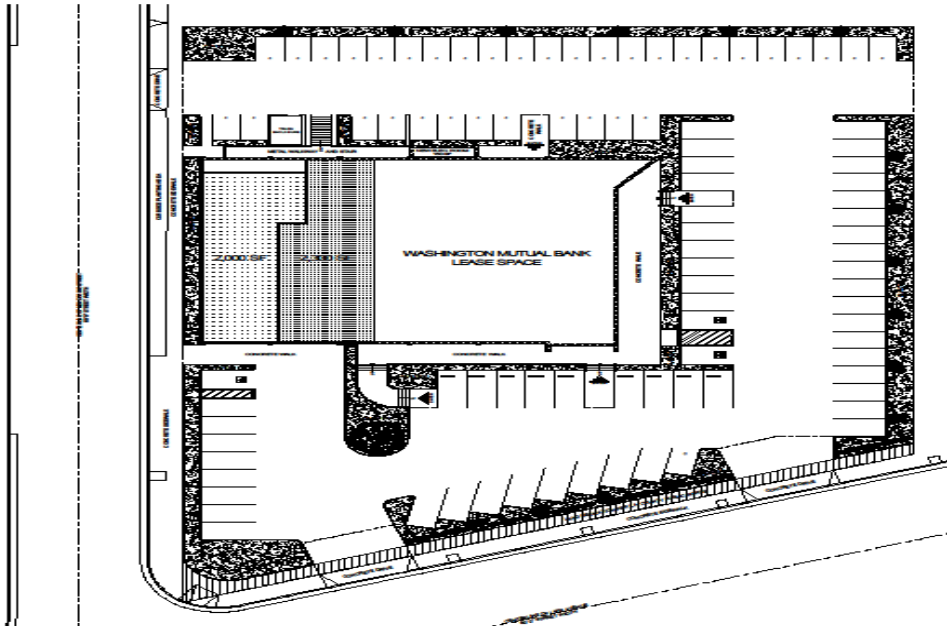
1517 S. Sepulveda Blvd.
Los Angeles, CA 90025

17030 Ventura Blvd, #200
Encino, CA 91316

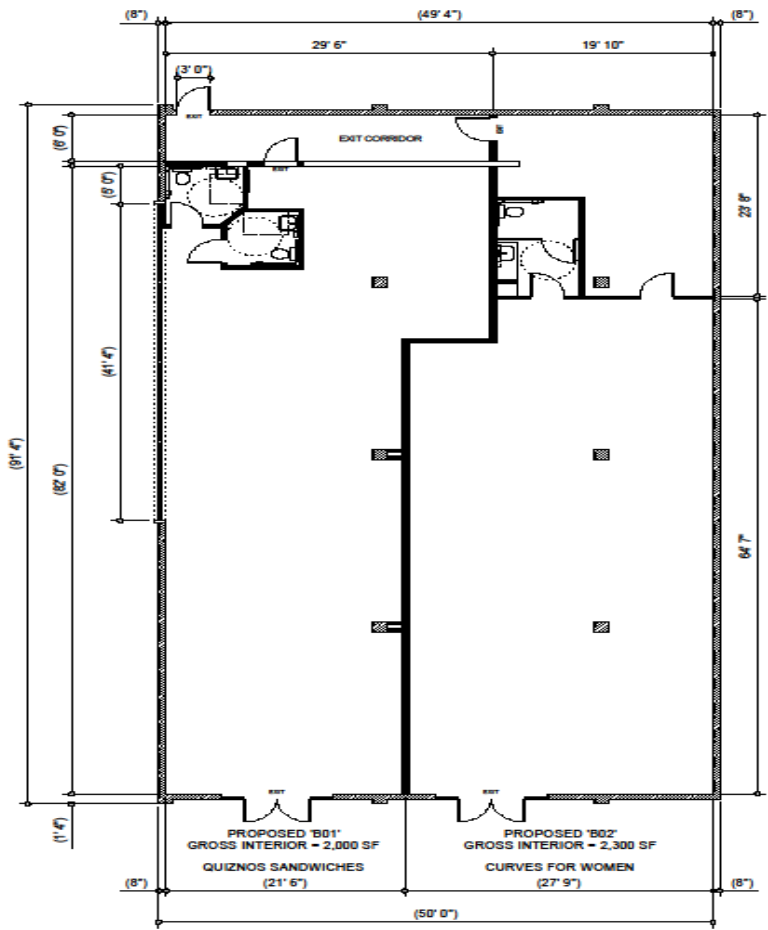
Photos



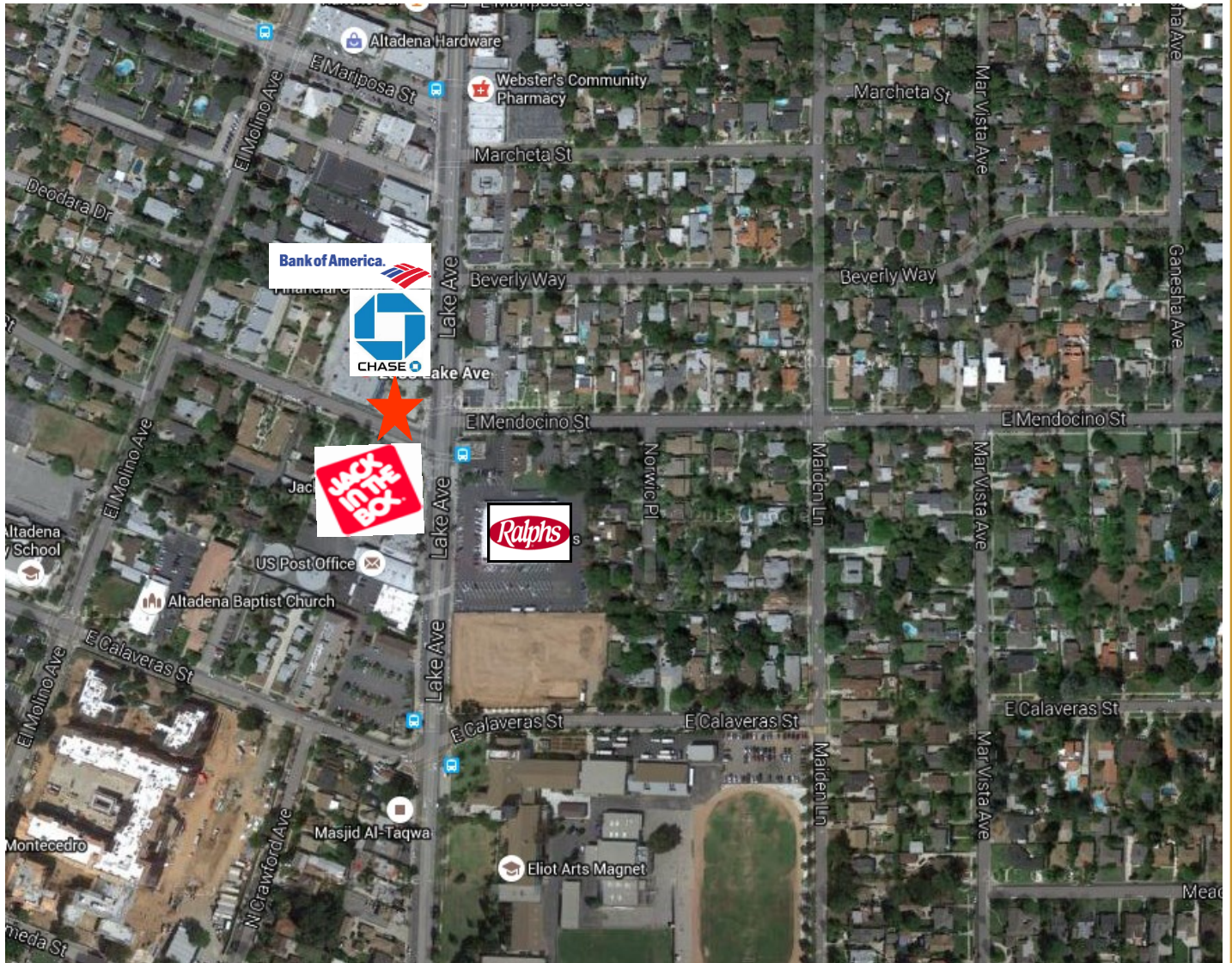
Site Plan



Floor Plan



Aerial



Demographics

Demographic Snapshot Comparison Report for My Site, 2333 Lake Ave, Altadena, CA, 91001:

	1 mile(s)	3 mile(s)	5 mile(s)
Population: 2015B			
Total Population	19,369	137,392	250,998
Female Population	51.82%	51.26%	51.49%
Male Population	48.18%	48.74%	48.51%
Population Density	6,164	4,858	3,195
Population Median Age	43.7	38.3	40.6
Employed Civilian Population 16+	9,436	62,585	119,116
% White Collar	71.3%	67.0%	75.1%
% Blue Collar	28.7%	33.0%	24.9%
Total Employees	5,949	63,002	132,153
Total Establishments*	605	6,410	13,805
Population Growth 2000-2010	-3.68%	-0.33%	1.89%
Population Growth 2015B-2020	0.68%	1.95%	2.03%
Income: 2015B			
Average Household Income	\$121,041	\$96,039	\$119,459
Median Household Income	\$84,029	\$62,616	\$75,043
Per Capita Income	\$45,121	\$35,693	\$47,040
Avg Income Growth 2000-2010	43.12%	40.80%	34.75%
Avg Income Growth 2015B-2020	15.73%	16.59%	15.58%
Households: 2015B			
Households	7,185	50,556	98,180
Average Household Size	2.65	2.65	2.51
Hhld Growth 2000-2010	0.56%	4.56%	4.77%
Hhld Growth 2015B-2020	1.33%	3.05%	2.86%
Housing Units: 2015B			
Occupied Units	7,185	50,556	98,180
% Occupied Units	98.77%	97.41%	97.61%
% Vacant Housing Units	1.23%	2.59%	2.39%
Owner Occ Housing Growth 2000-2010	-3.81%	2.61%	2.73%
Owner Occ Housing Growth 2000-2020	0.15%	6.45%	7.64%
Owner Occ Housing Growth 2015B-2020	1.02%	1.77%	1.69%
Occ Housing Growth 2000-2010	0.56%	4.56%	4.77%
Occ Housing Growth 2010-2020	5.66%	8.31%	8.67%
Occ Housing Growth 2015B-2020	1.33%	3.05%	2.86%
Race and Ethnicity: 2015B			
% American Indian or Alaska Native Population	0.70%	0.73%	0.55%
% Asian Population	6.16%	9.91%	17.15%
% Black Population	21.20%	16.34%	10.37%
% Hawaiian or Pacific Islander Population	0.10%	0.13%	0.10%
% Multirace Population	6.58%	5.69%	5.17%
% Other Race Population	10.61%	16.33%	11.14%
% White Population	54.64%	50.87%	55.51%
% Hispanic Population	29.35%	38.45%	28.75%
% Non Hispanic Population	70.65%	61.55%	71.25%