



For Lease

Class A Medical Office Space

- Premium location at the main entrance and intersection into Laureate Park on the northwest corner of Tavistock Lakes Blvd and Narcoossee Road
- Shell condition
- Within close proximity to Lake Nona Town Center and Medical City, which includes tenants such as:
 - » VA Hospital
 - » UCF College of Medicine
 - » UF's Research and Academic Center
 - » Nemours Children's hospital
 - » Sanford Burnham Prebys Medical Discovery Institute

Site Features

- Premises: 16,670 s.f.
- Rental rate: Negotiable
- Location: Northwest corner of Tavistock Lakes Blvd and Narcoossee Road, Lake Nona

Gateway Building
9975 Tavistock Lakes Blvd
Orlando, FL 32827

Carey Froelicher, MSRE

+1 407 982 8556

carey.froelicher@am.jll.com

Aaron Gray

+1 407 982 8772

aaron.gray@am.jll.com





130,211

2022 Projected Population
5 Mile Radius



3,400±

Homes To Be Built
1-mile radius



\$102,874

Average HH Income
5-Mile Radius



\$119,719

2022 Projected Average HH Income
5-Mile Radius



\$307,295

Median Home Value
2018 3-Mile Radius

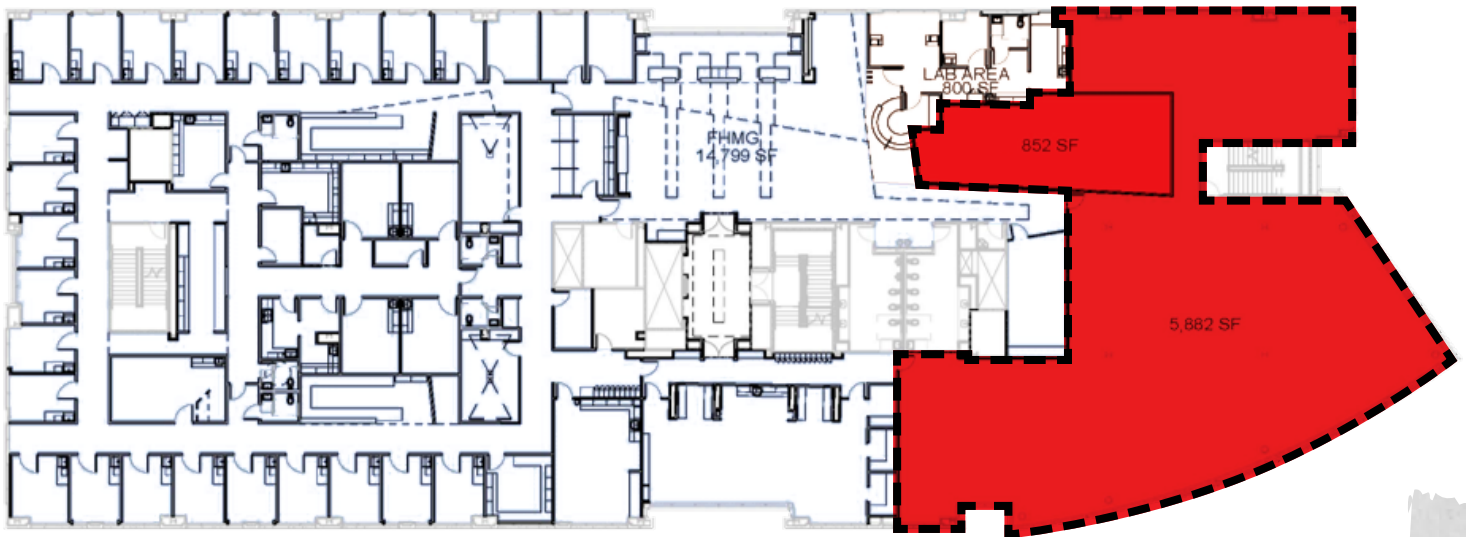


39,500± VPD

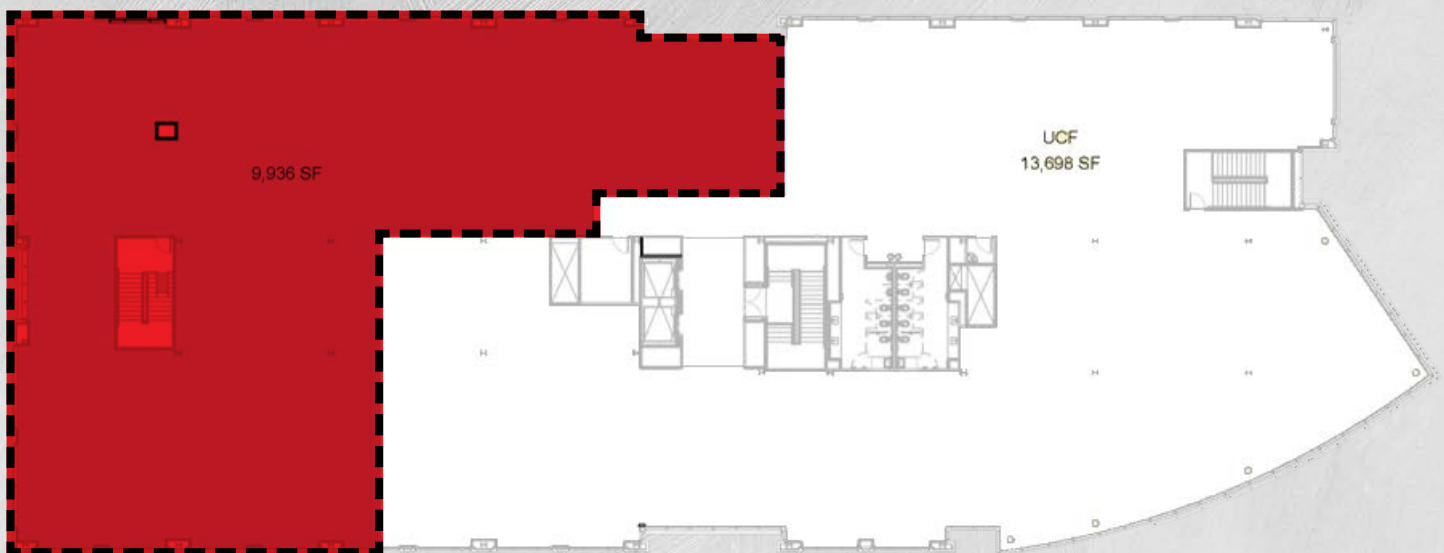
Combined
Traffic Counts

Gateway Building

2nd Floor Space Available



3rd Floor Space Available



Gateway Building
9975 Tavistock Lakes Blvd
Orlando, FL 32827

Carey Froelicher, MSRE

+1 407 982 8556

carey.froelicher@am.jll.com

Aaron Gray

+1 407 982 8772

aaron.gray@am.jll.com

DISCLAIMER

© 2018 Jones Lang LaSalle Brokerage, Inc. All rights reserved. All information contained herein is from sources deemed reliable; however, no representation or warranty is made to the accuracy thereof.