

OFFICE SPACE AVAILABLE FOR LEASE



100 Arrandale Blvd | Exton, PA

FEATURES:

Building Size: 35,544 SF

Available: First Floor: 1,691 SF

Building Features: Elegant atrium lobby

Full-height windows

9' ceiling height

Solid core doors

High end finishes

Fully insulated interior walls

Amenities: Restaurants, banks, shopping,
and recreation nearby
Adjacent to Chester Valley Trail
Public Bus & Rail Transportation
is available

BUILDING: Prestigious 2-story, 35,544 square foot, Class A office building located on Route 30, next to The Oaklands Corporate Center. This building is surrounded by mature trees; featuring a beautiful stone and dryvit façade with an impressive 2-story glass atrium lobby.

LOCATION: Route 30 and Arrandale Blvd at lighted intersection, easy access to Route 30 Bypass and minutes to Routes 100, 202, and The PA Turnpike.

Contact:

JoAnn West

610.225.0913

jwest@liebermanearley.com

or

Philip Earley, CCIM

610.225.0900

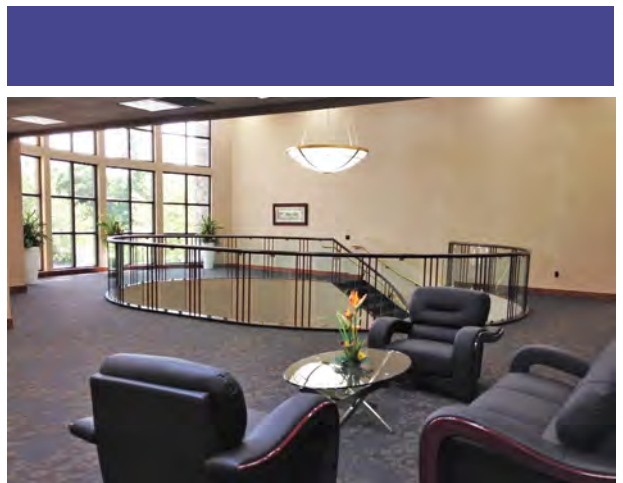
philearley@liebermanearley.com

LIEBERMAN EARLEY & COMPANY

The Meadows 485 Devon Park Drive Suite 110 Wayne, PA 610.688.4300

Information contained herein has been obtained from the owner of the property or from sources deemed reliable. We have no reason to doubt its accuracy but make no warranty or representation. All information is submitted subject to errors, omissions, change, withdrawal without notice and any special listing conditions of the owner.

100 Arrandale Blvd, Exton, PA

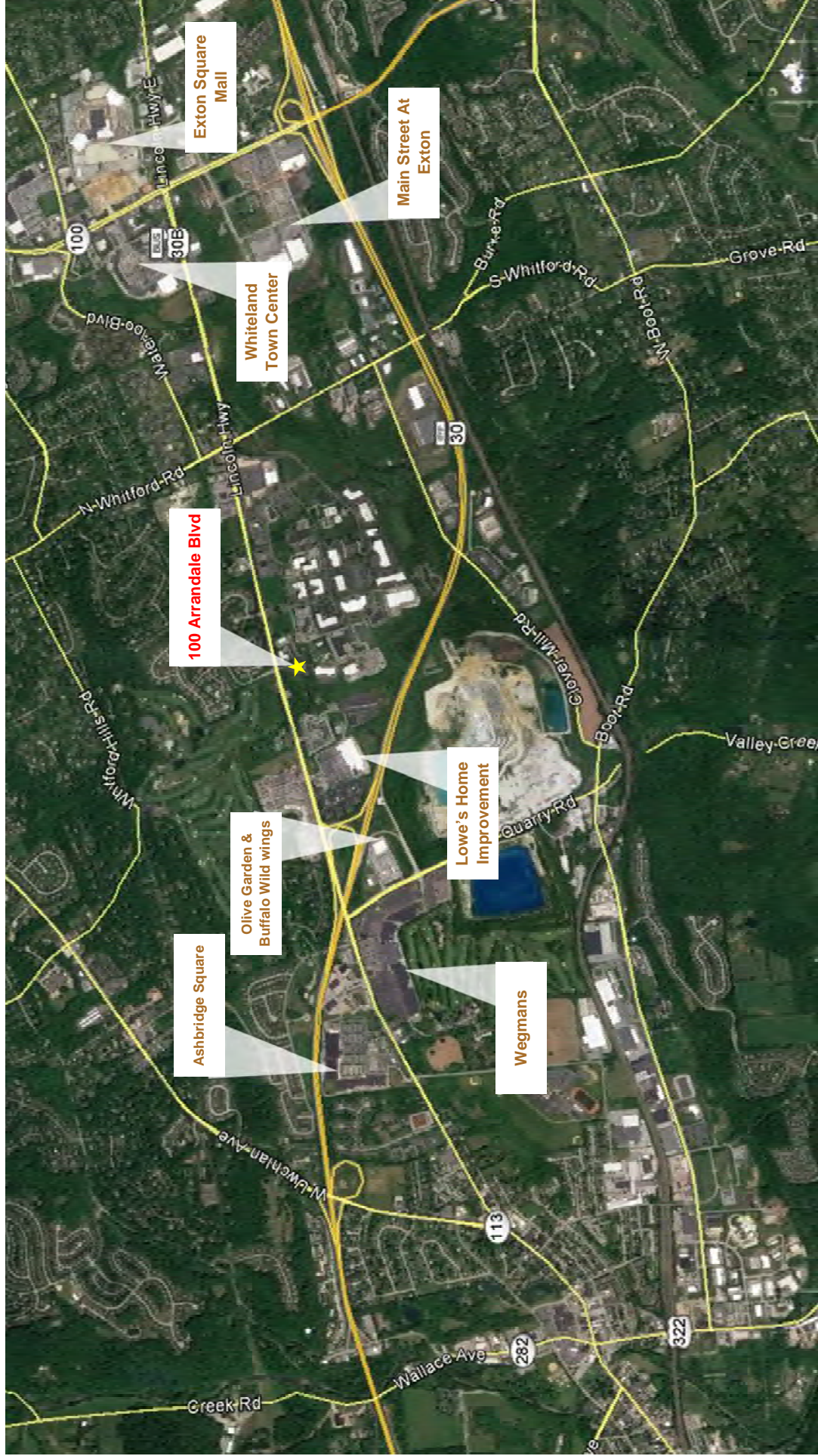


LIEBERMAN EARLEY & COMPANY
The Meadows 485 Devon Park Drive Suite 110 Wayne, PA 610.688.4300

Information contained herein has been obtained from the owner of the property or from sources deemed reliable. We have no reason to doubt its accuracy but make no warranty or representation. All information is submitted subject to errors, omissions, change, withdrawal without notice and any special listing conditions of the owner.

Location

100 Arrandale Blvd, Exton, PA

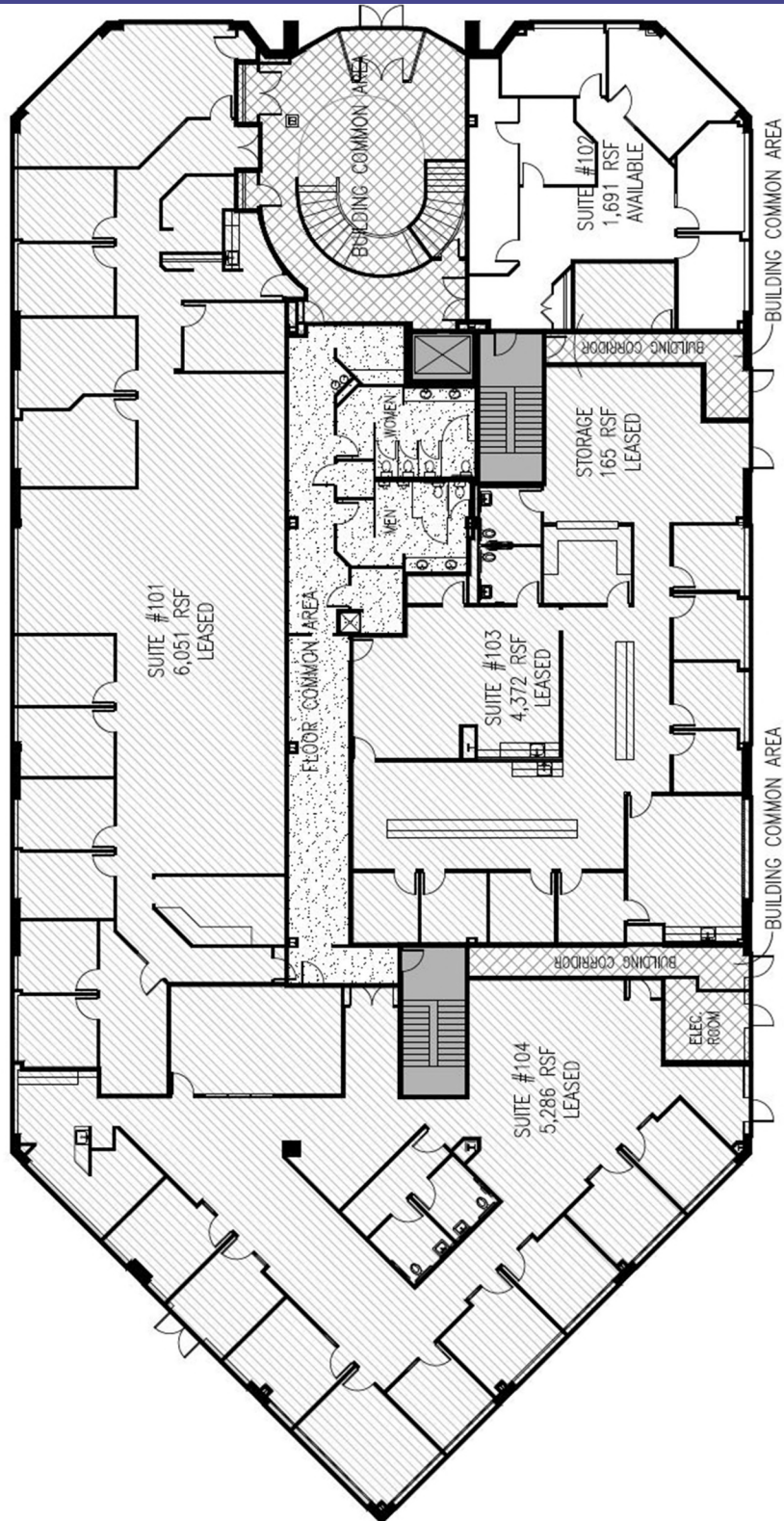


LIEBERMAN EARLEY & COMPANY
The Meadows 485 Devon Park Drive Suite 110 Wayne, PA 610.688.4300

Information contained herein has been obtained from the owner of the property or from sources deemed reliable. We have no reason to doubt its accuracy but make no warranty or representation. All information is submitted subject to errors, omissions, change, withdrawal without notice and any special listing conditions of the owner.

100 Arrandale Blvd | Exton, PA

First Floor Plan



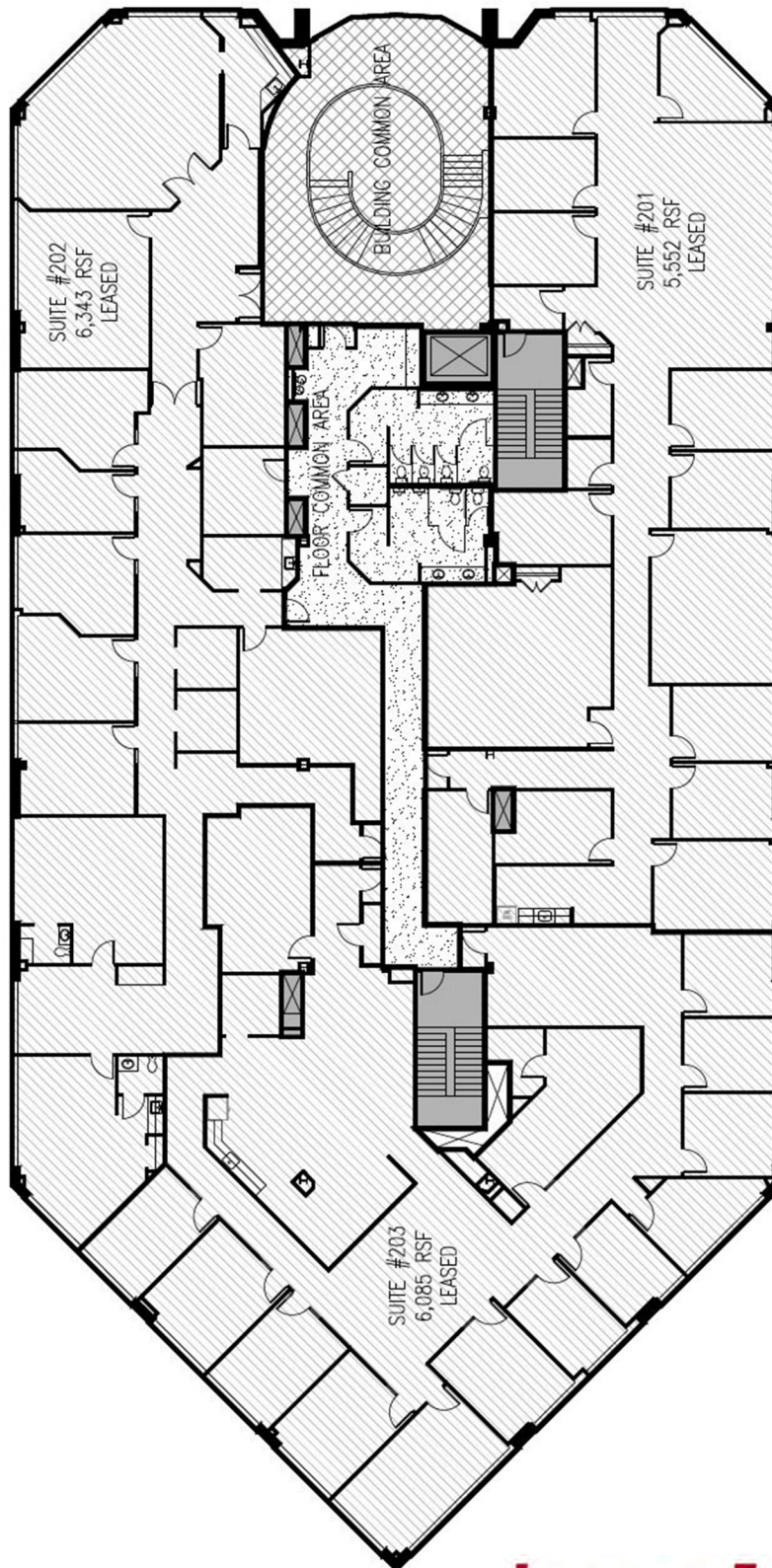
Information contained herein has been obtained from the owner of the property or from sources deemed reliable. We have no reason to doubt its accuracy but make no warranty or representation. All information is submitted subject to errors, omissions, change, withdrawal without notice and any special listing conditions of the owner.

LIEBERMAN EARLEY & COMPANY

The Meadows 485 Devon Park Drive Suite 110 Wayne, PA 610.688.4300

100 Arrandale Blvd | Exton, PA

Second Floor Plan



Information contained herein has been obtained from the owner of the property or from sources deemed reliable. We have no reason to doubt its accuracy but make no warranty or representation. All information is submitted subject to errors, omissions, change, withdrawal without notice and any special listing conditions of the owner.

LIEBERMAN EARLEY & COMPANY

The Meadows 485 Devon Park Drive Suite 110 Wayne, PA 610.688.4300