

FOR LEASE

# Barrett Place

RETAIL



## PROPERTY INFO

- + Multiple access points to property with easy access to a traffic light
- + Approximately 20,623 square feet
- + Rental rate: \$20.00 PSF net of expenses
- + Ample parking
- + Quality co-tenants: Best Buy, Michael's, Office Max, PetSmart and future Aldi
- + Secure loading dock
- + Quality retail surrounds the property
- + Excellent traffic count – 58,600 ADT on Ernest Barrett Parkway

800 COBB PLACE, KENNESAW, GEORGIA 30144

[www.cbre.com/kirk.buttler](http://www.cbre.com/kirk.buttler)

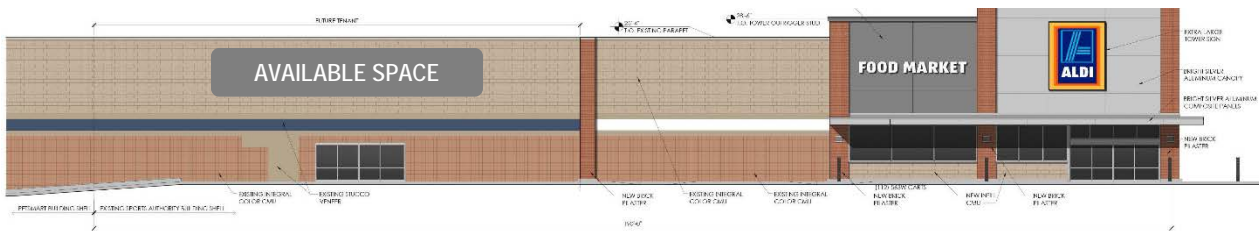
**CBRE**



FOR LEASE

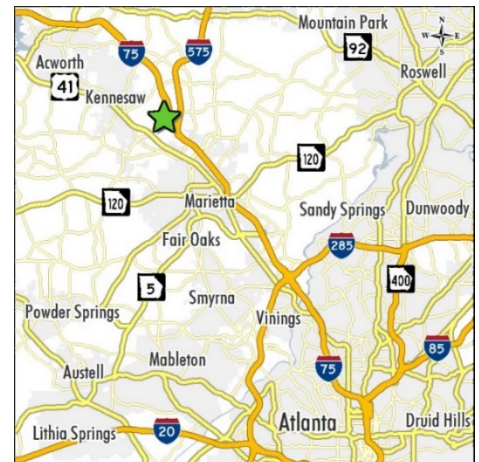
# Barrett Place

RETAIL



## 2017 ESTIMATED DEMOGRAPHICS

	1 MILE	3 MILES	5 MILES
Population	6,124	53,007	177,603
Households	2,893	21,367	67,211
Average Household Income	\$63,337	\$74,175	\$87,735
Daytime Population	11,788	63,554	117,657





FOR LEASE

# Barrett Place

RETAIL





FOR LEASE

# Barrett Place

RETAIL



ADJACENT TENNANT AREA SUMMARY		
AREAS	ALDI SPACE	ADJACENT SPACE
MERCANTILE	13,141 SF	17,151 SF
STORAGE/STOCK	7,457 SF	2,534 SF
LOADING (SHARED)	356 SF	356 SF
TOTAL	20,954 SF	20,041 SF

## CONTACT US

### Kirk L Buttle

Senior Vice President  
+1 404 923 1244  
kirk.buttle@cbre.com  
Lic. 115714

### Emily Kozarek

Associate  
+1 404 504 7929  
emily.kozarek@cbre.com  
Lic. 371287

### CBRE, Inc

+1 404 504 7900  
www.cbre.com/atlanta

© 2017 CBRE, Inc. All rights reserved. This information has been obtained from sources believed reliable, but has not been verified for accuracy or completeness. You should conduct a careful, independent investigation of the property and verify all information. Any reliance on this information is solely at your own risk. CBRE and the CBRE logo are service marks of CBRE, Inc. All other marks displayed on this document are the property of their respective owners. Photos herein are the property of their respective owners. Use of these images without the express written consent of the owner is prohibited.