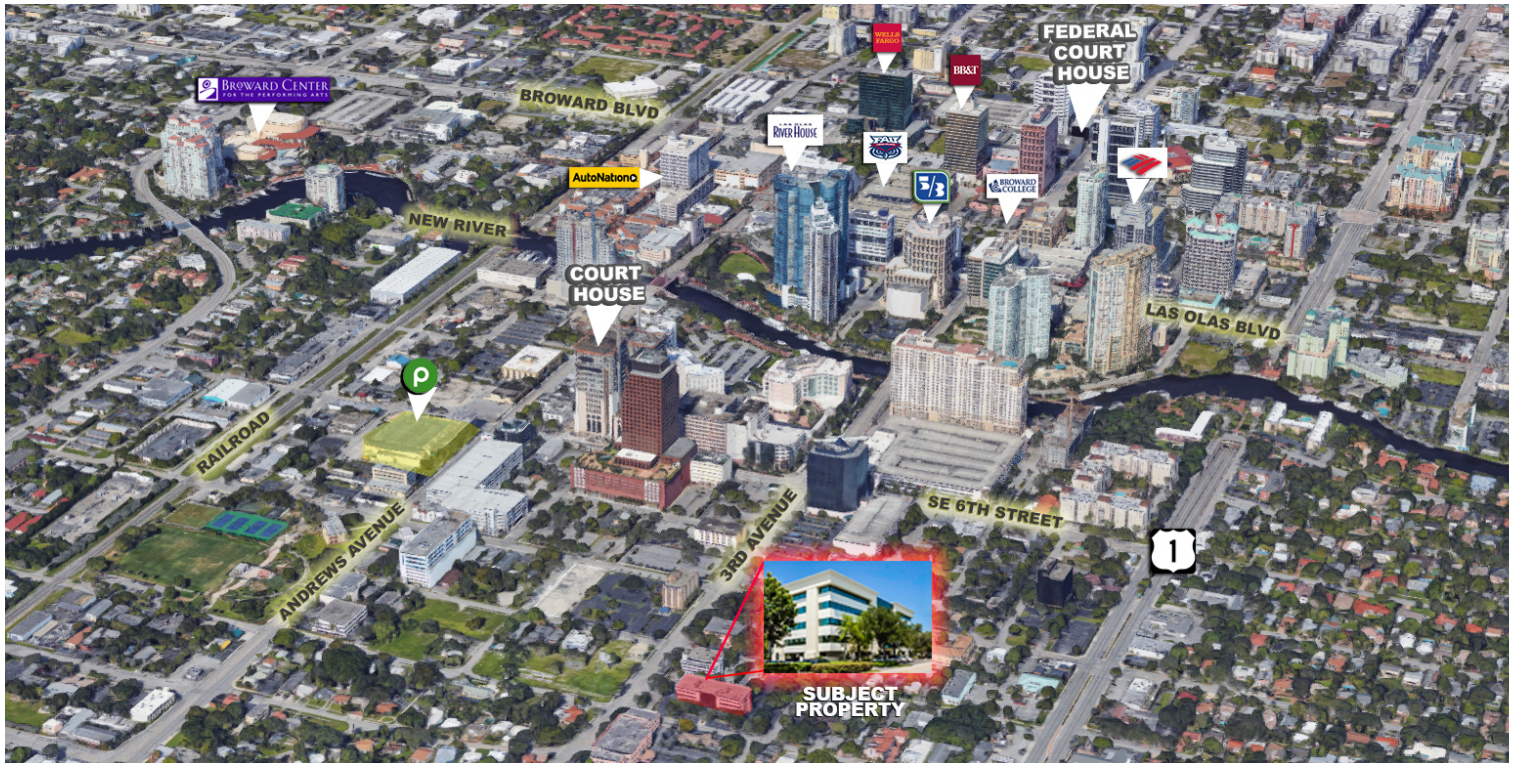


RARE DOWNTOWN OFFICE CONDO FOR LEASE

888 SE 3rd Avenue, Fort Lauderdale, FL 33316



Experience the power of market knowledge



PROPERTY HIGHLIGHTS

- Rare downtown office space available for lease
- Walking distance to Broward County Courthouse, food, banking, and all other downtown amenities
- Located just south of New River on the NE corner of the intersection of SE 3rd Avenue and SE 9th Street
- 2,765 +/- square feet
- 8 interior offices, kitchenette, reception area, conference room, and support staff offices
- Perfect for law office, accounting firm, or any other office user
- Free parking (Including 2 free covered parking spaces)
- \$26.00 per square foot Modified Gross + Electric and Janitorial



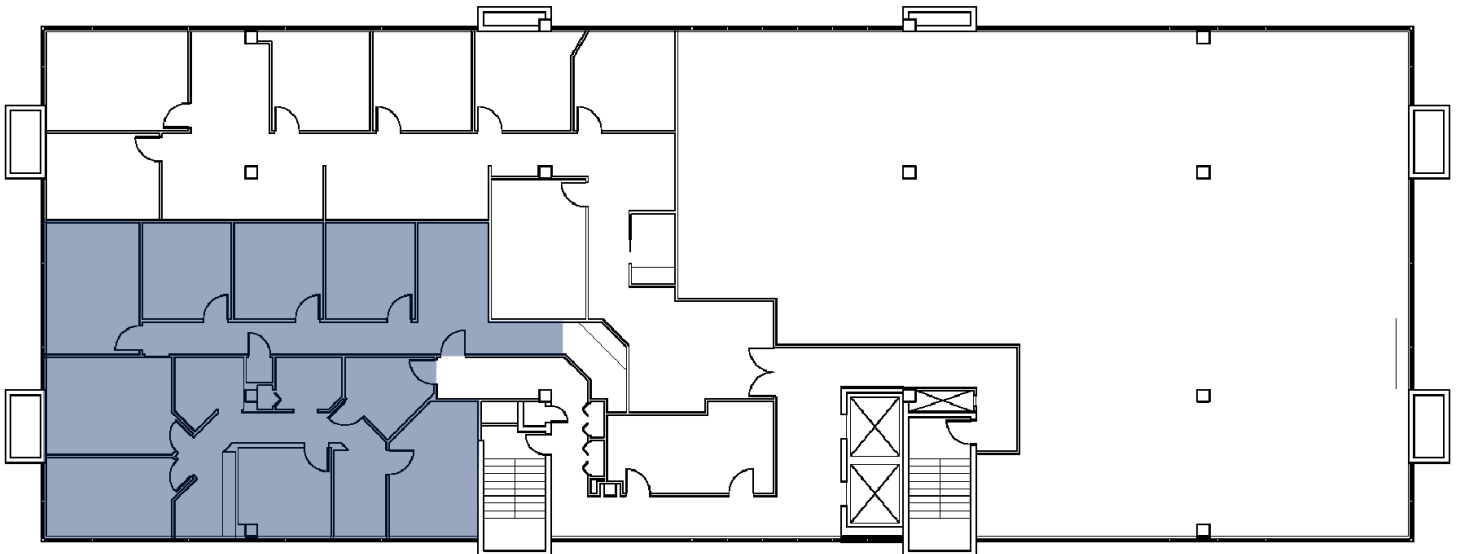
John Forman
Sales Associate
954.652.2026
iforman@bergercommercial.com

Keith R. Graves, CCIM
Senior Vice President
954.652.2031
kgraves@bergercommercial.com

COURTHOUSE LEGAL CENTRE SPACE FOR LEASE

888 SE 3rd Avenue, Fort Lauderdale, FL 33316

[Additional Photos](#)



John Forman
Sales Associate
954.652.2026
iforman@bergercommercial.com

Keith R. Graves, CCIM
Senior Vice President
954.652.2031
kgraves@bergercommercial.com