

# Office Warehouse For Sale **\$350,000**



**1675 Choctaw Drive**  
Baton Rouge, LA

**PROPERTY CONTACTS:**

Hartley Crockett  
225.610.0821  
hcrockett@latterblum.com

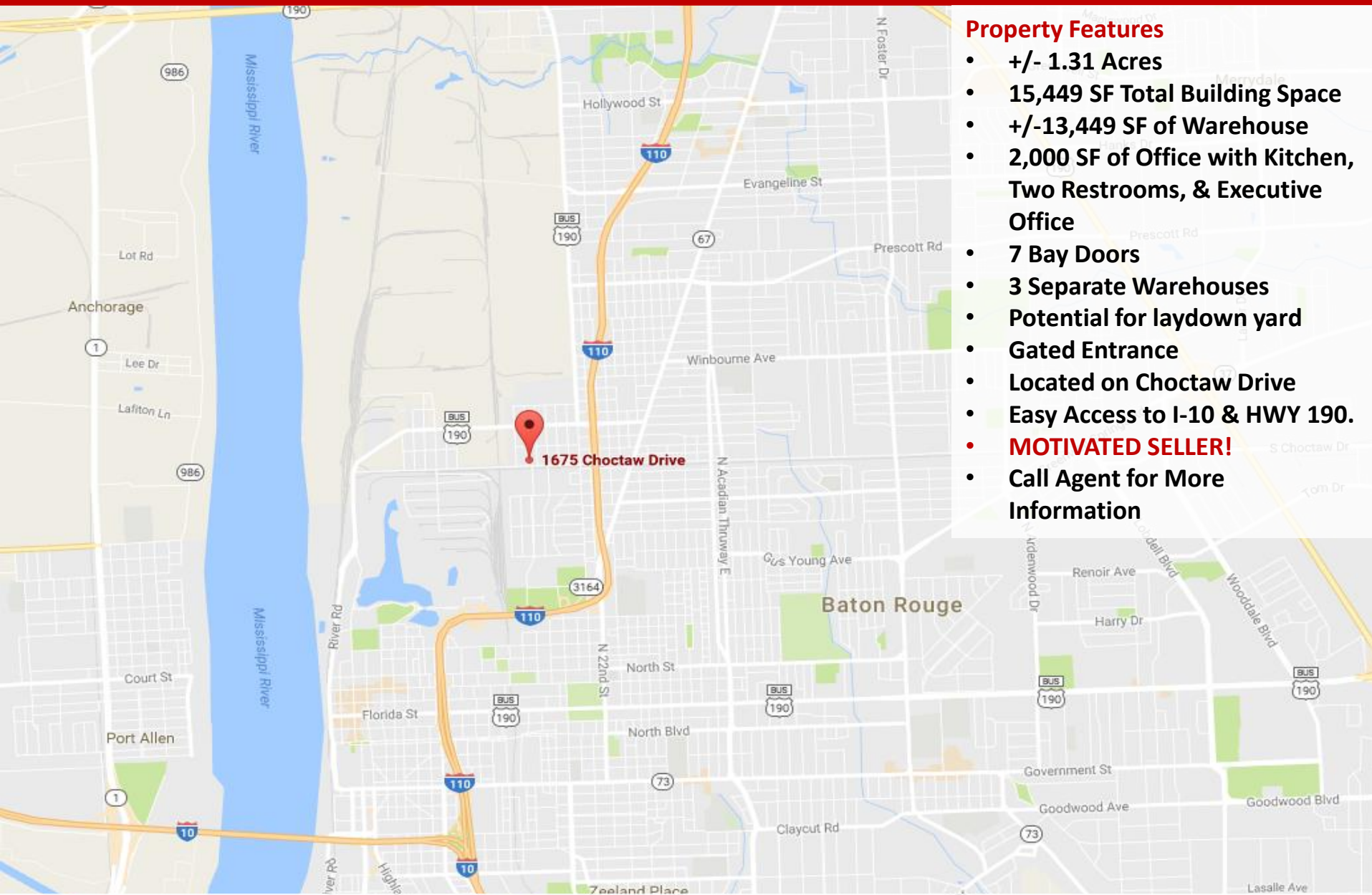
Michael Cashio  
225.247.9812  
mcashio@latterblum.com

**NAI**Latter & Blum

Updated  
12/21/2016



# LOCATION



## Property Features

- +/- 1.31 Acres
- 15,449 SF Total Building Space
- +/-13,449 SF of Warehouse
- 2,000 SF of Office with Kitchen, Two Restrooms, & Executive Office
- 7 Bay Doors
- 3 Separate Warehouses
- Potential for laydown yard
- Gated Entrance
- Located on Choctaw Drive
- Easy Access to I-10 & HWY 190.
- **MOTIVATED SELLER!**
- Call Agent for More Information

10455 Jefferson Highway, Suite 200  
Baton Rouge, LA 70809 USA  
225.295.0800

[www.latterblum.com](http://www.latterblum.com)

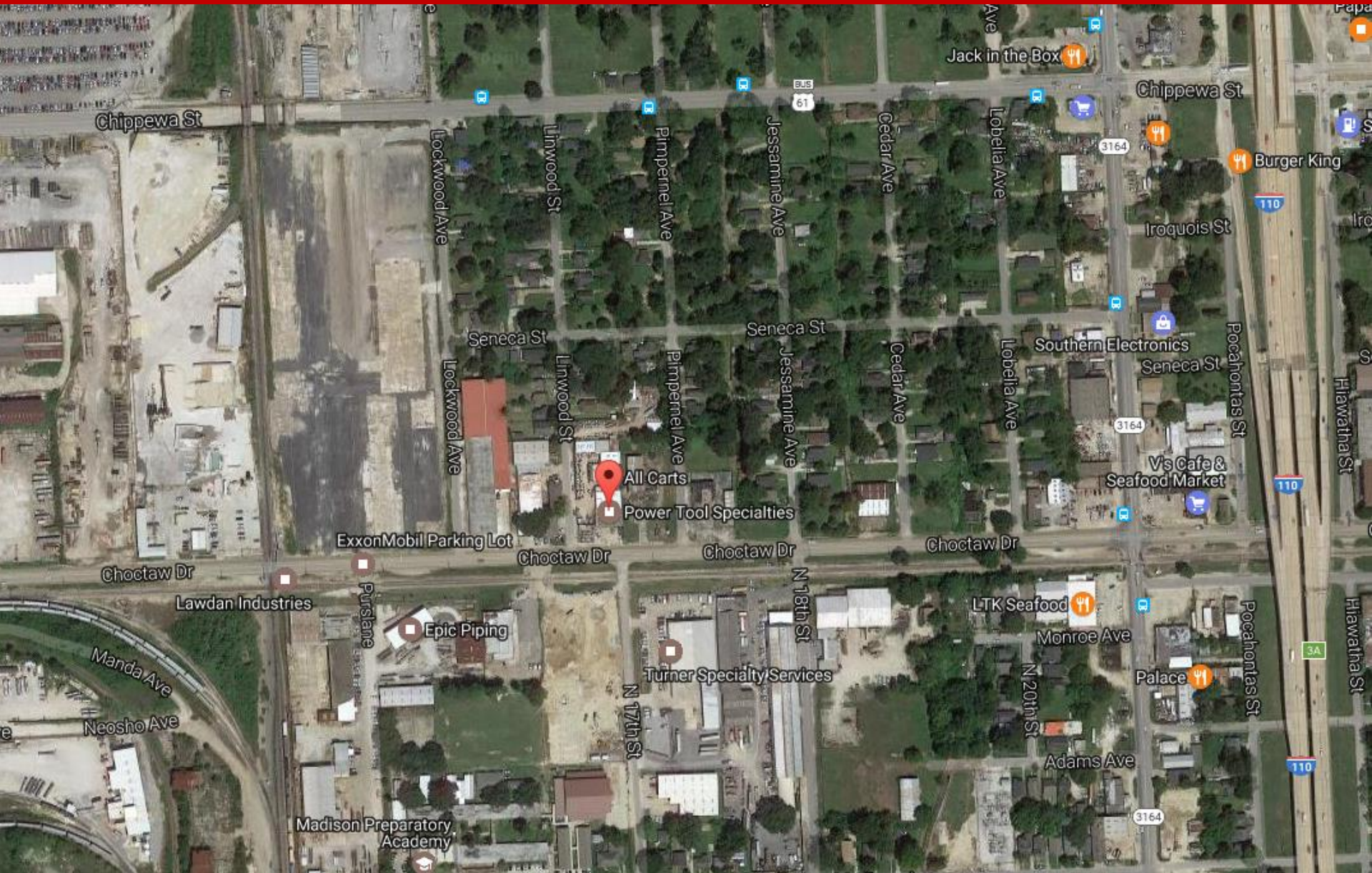
LICENSED IN LOUISIANA. NO WARRANTY OR REPRESENTATION, EXPRESS OR IMPLIED, IS MADE AS TO THE ACCURACY OF THE INFORMATION CONTAINED HEREIN, AND THE SAME IS SUBMITTED SUBJECT TO ERRORS, OMISSIONS, CHANGE OF PRICE, RENTAL OR OTHER CONDITIONS, PRIOR SALE, LEASE OR FINANCING, OR WITHDRAWAL WITHOUT NOTICE, AND OF ANY SPECIAL LISTING CONDITIONS IMPOSED BY OUR PRINCIPALS NO WARRANTIES OR REPRESENTATIONS ARE MADE AS TO THE CONDITION OF THE PROPERTY OR ANY HAZARDS CONTAINED THEREIN ARE ANY TO BE IMPLIED

**NAI**Latter & Blum  
Updated

12/21/2016



# IMMEDIATE AREA



10455 Jefferson Highway, Suite 200  
Baton Rouge, LA 70809 USA  
225.295.0800  
[www.latterblum.com](http://www.latterblum.com)

LICENSED IN LOUISIANA. NO WARRANTY OR REPRESENTATION, EXPRESS OR IMPLIED, IS MADE AS TO THE ACCURACY OF THE INFORMATION CONTAINED HEREIN, AND THE SAME IS SUBMITTED SUBJECT TO ERRORS, OMISSIONS, CHANGE OF PRICE, RENTAL OR OTHER CONDITIONS, PRIOR SALE, LEASE OR FINANCING, OR WITHDRAWAL WITHOUT NOTICE, AND OF ANY SPECIAL LISTING CONDITIONS IMPOSED BY OUR PRINCIPALS NO WARRANTIES OR REPRESENTATIONS ARE MADE AS TO THE CONDITION OF THE PROPERTY OR ANY HAZARDS CONTAINED THEREIN ARE ANY TO BE IMPLIED

**NAI**Latter & Blum  
Updated  
12/21/2016





# PICTURES



10455 Jefferson Highway, Suite 200  
Baton Rouge, LA 70809 USA  
225.295.0800  
[www.latterblum.com](http://www.latterblum.com)

LICENSED IN LOUISIANA. NO WARRANTY OR REPRESENTATION, EXPRESS OR IMPLIED, IS MADE AS TO THE ACCURACY OF THE INFORMATION CONTAINED HEREIN, AND THE SAME IS SUBMITTED SUBJECT TO ERRORS, OMISSIONS, CHANGE OF PRICE, RENTAL OR OTHER CONDITIONS, PRIOR SALE, LEASE OR FINANCING, OR WITHDRAWAL WITHOUT NOTICE, AND OF ANY SPECIAL LISTING CONDITIONS IMPOSED BY OUR PRINCIPALS NO WARRANTIES OR REPRESENTATIONS ARE MADE AS TO THE CONDITION OF THE PROPERTY OR ANY HAZARDS CONTAINED THEREIN ARE ANY TO BE IMPLIED

**NAI**Latter & Blum  
Updated  
12/21/2016