

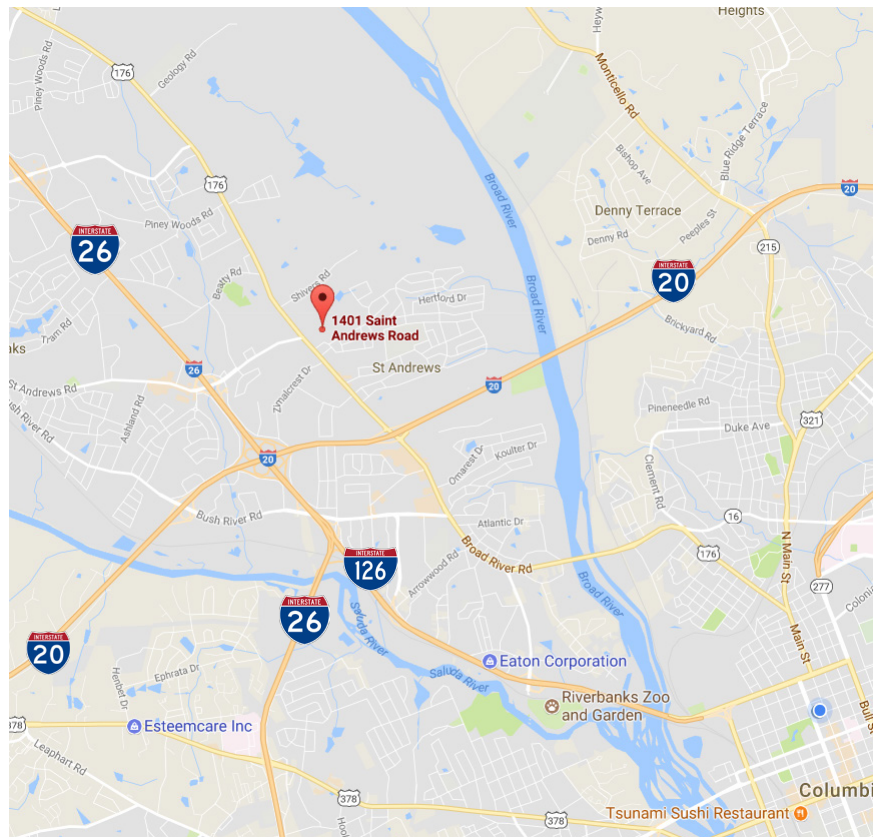
# THE BUSINESS PARK OF ST ANDREWS

1401, 1404, 1410 St. Andrews Road  
Columbia, South Carolina



## FOR LEASE

- ◆ ±31,519 SF Flex space
- ◆ Available:
  - ◆ Minimum ±1,495 SF
  - ◆ Maximum ±4,650 SF
- ◆ Dock high or Drive-In door
- ◆ Signage overlooking St. Andrews Rd.
- ◆ Close proximity to I-20 and I-26
- ◆ Zoned: General Commercial
- ◆ **LEASE RATE: \$8.00 PSF Modified Gross**



**Wilson Kibler**

1111 Laurel Street, Columbia, SC 29201 T 803.779.8600 [www.wilsonkibler.com](http://www.wilsonkibler.com)

**John Mills**

803.255.8628 [john.mills@wilsonkibler.com](mailto:john.mills@wilsonkibler.com)

**William Mills**

803.255.8616 [wmills@wilsonkibler.com](mailto:wmills@wilsonkibler.com)

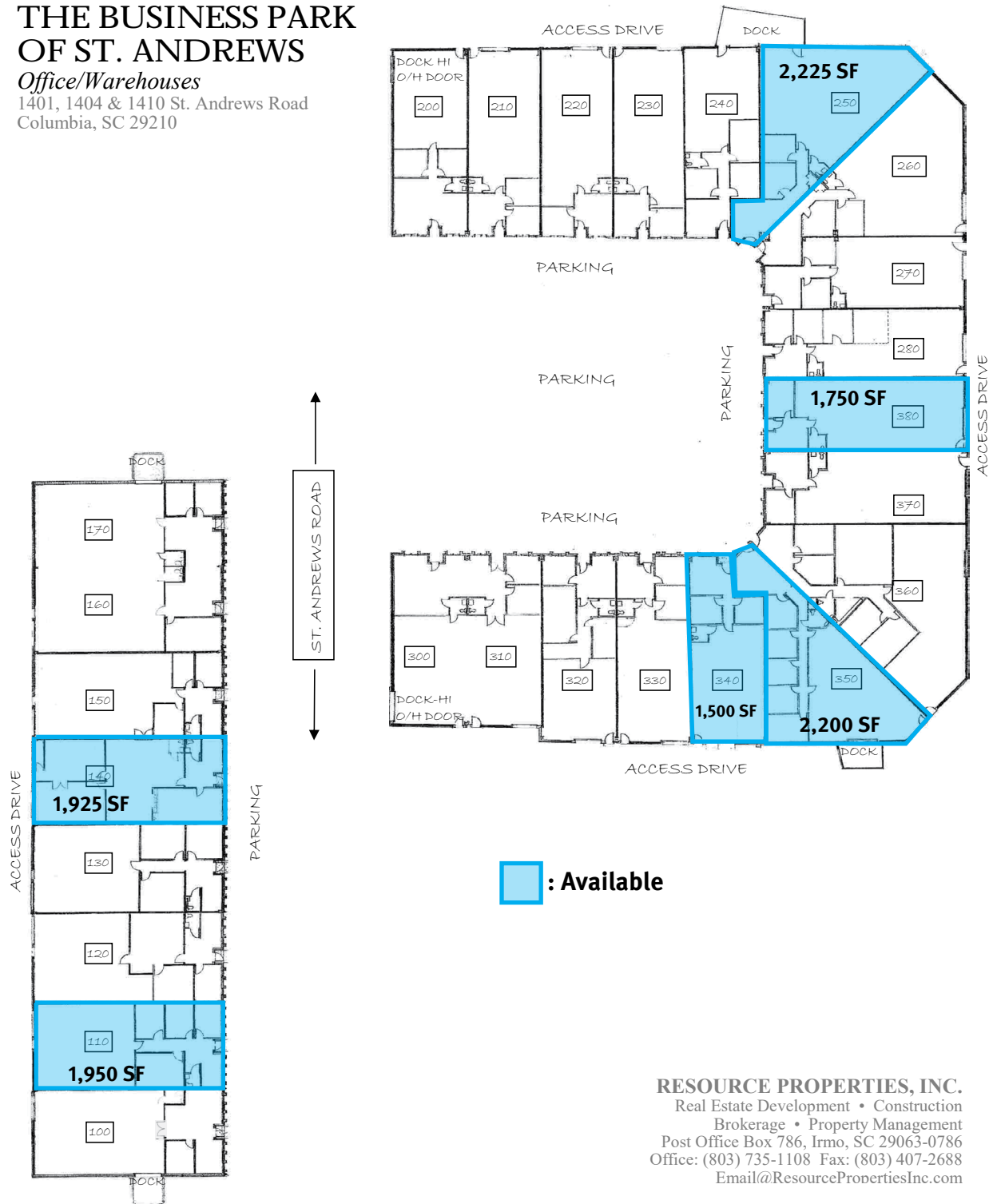
# THE BUSINESS PARK OF ST ANDREWS

1401, 1404, 1410 St. Andrews Road  
Columbia, South Carolina

## THE BUSINESS PARK OF ST. ANDREWS

Office/Warehouses

1401, 1404 & 1410 St. Andrews Road  
Columbia, SC 29210



**RESOURCE PROPERTIES, INC.**  
Real Estate Development • Construction  
Brokerage • Property Management  
Post Office Box 786, Irmo, SC 29063-0786  
Office: (803) 735-1108 Fax: (803) 407-2688  
Email@ResourcePropertiesInc.com

**Wilson Kibler**

1111 Laurel Street, Columbia, SC 29201 T 803.779.8600 www.wilsonkibler.com

**John Mills**

803.255.8628 john.mills@wilsonkibler.com

**William Mills**

803.255.8616 wmills@wilsonkibler.com