

835 MASON STREET
DEARBORN, MICHIGAN

OFFICE FOR LEASE
Up to 18,500 Square Feet Available



**SIGNATURE
ASSOCIATES**
KNOW SIGNATURE | KNOW RESULTS

DEARBORN ATRIUM OFFICE CENTER



PROPERTY FEATURES

- 1,991 – 18,500 square feet available
- Large floor plates
- Covered parking plus surface parking
- Great value with on-site owner/management
- Walking distance to restaurants and shops
- Beautiful atrium building
- Large conference center on first floor available for tenant usage
- Immediate occupancy
- Lease Rate: \$16.50/sf G+E



For more information, please contact:

CHRIS SECONTINE
(248) 799 3174
csecontine@signatureassociates.com

JUSTIN GAFFREY
(248) 799 3143
jgaffrey@signatureassociates.com

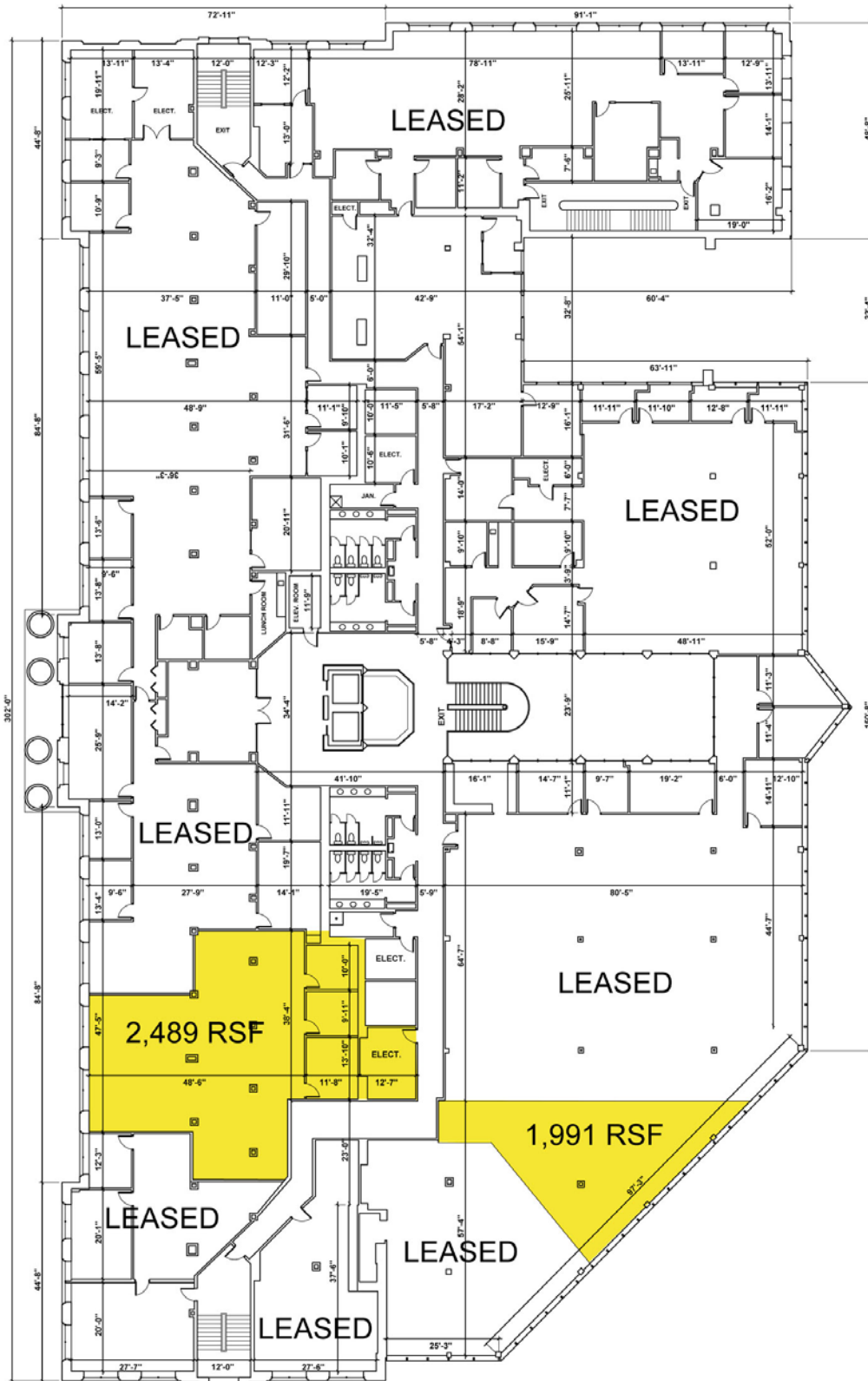
SIGNATURE ASSOCIATES
One Towne Square, Suite 1200
Southfield, MI 48076
www.signatureassociates.com

835 Mason Street –Dearborn, Michigan

Office For Lease

Up to 18,500
Square Feet
AVAILABLE

2nd Floor



For more information, please contact:

CHRIS SECONTINE
(248) 799 3174
csecontine@signatureassociates.com

JUSTIN GAFFREY
(248) 799 3143
jgaffrey@signatureassociates.com

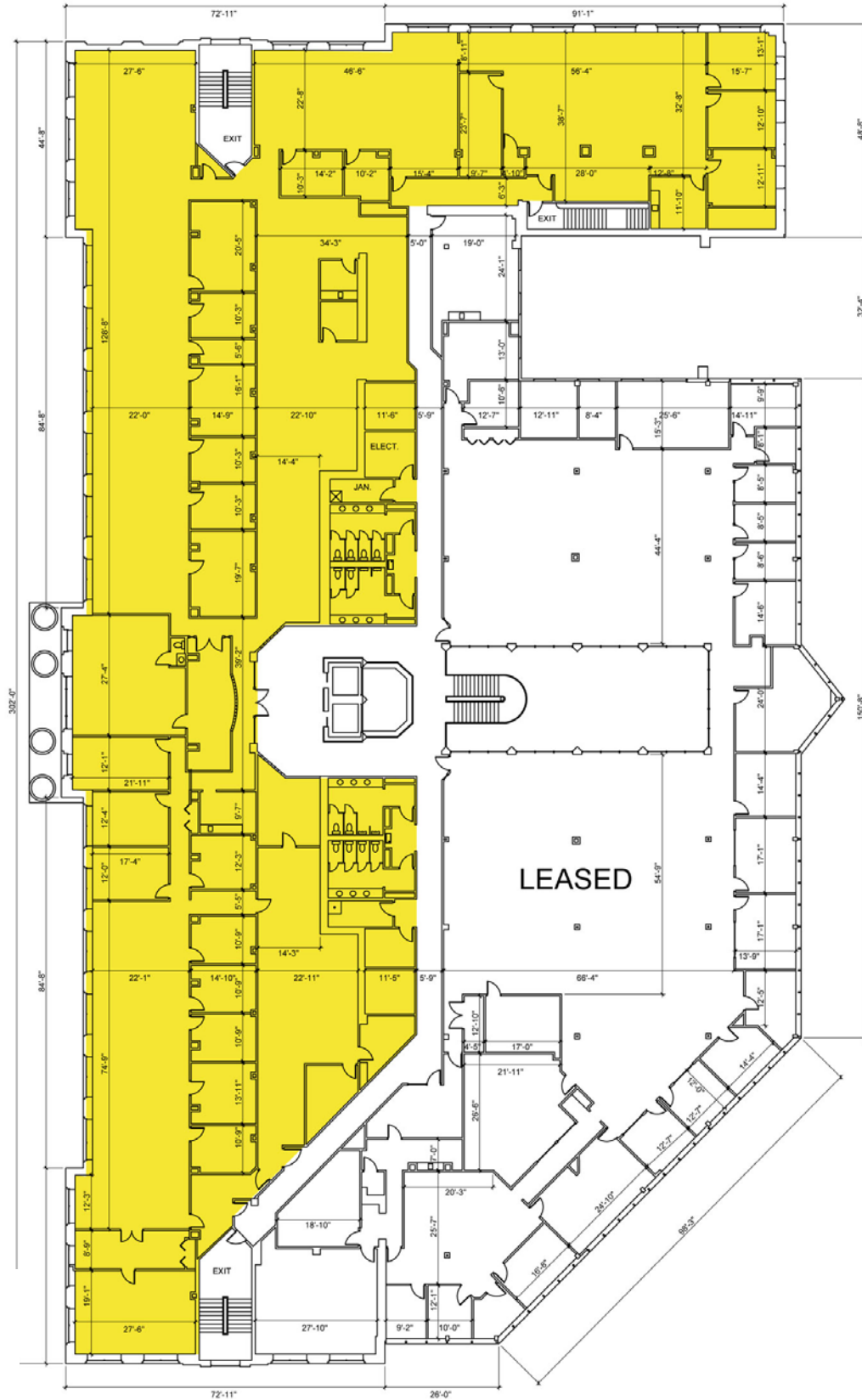
SIGNATURE ASSOCIATES
One Towne Square, Suite 1200
Southfield, MI 48076
www.signatureassociates.com

835 Mason Street –Dearborn, Michigan

Office For Lease

Up to 18,500
Square Feet
AVAILABLE

3rd Floor



For more information, please contact:

CHRIS SECONTINE
(248) 799 3174
csecontine@signatureassociates.com

JUSTIN GAFFREY
(248) 799 3143
jgaffrey@signatureassociates.com

SIGNATURE ASSOCIATES
One Towne Square, Suite 1200
Southfield, MI 48076
www.signatureassociates.com