

Monadnock Plaza Retail Space For Lease



1 Jaffrey Road

Peterborough NH

Property Features

- Four Spaces Left In Plaza
- 142 Parking Spaces
- 18,000 Vehicles Per Day
- Excellent Signage

[Click here for more information.](#)



TOTAL	6,400+/- SF
Unit #2	2,900+/- SF
Unit #9	3,500+/- SF
Unit #4	3,040+/- SF
Unit #8	2,900+/- SF

Aron Brown

603 637 2010

abrown@nainorwoodgroup.com

116 South River Road

Bedford NH 03110

+1 603 668 7000

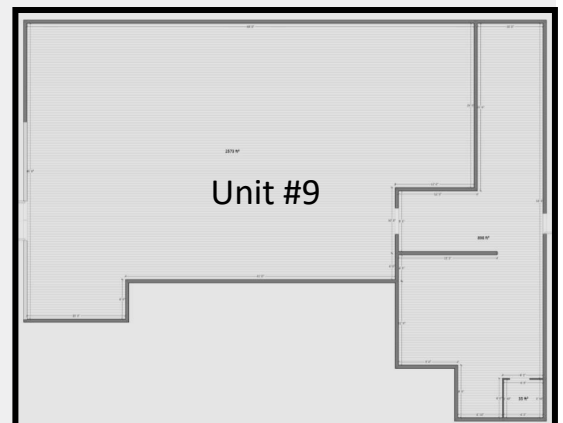
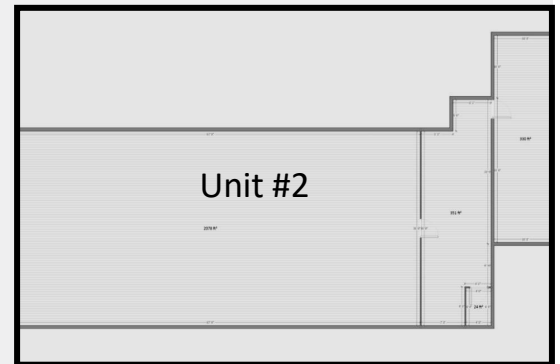
nainorwoodgroup.com

**1 Jaffery Road
Peterborough, NH**



A 41,000 SF shopping center located just outside the center of Peterborough, NH on Route 202 South. Easy access to both Keene and Manchester. Only four spaces available in this center which has many uses and close to town and Route 101. Half way between Keene and Manchester on Route 202.

Lease Rate: \$10.00 PSF NNN



NAI Norwood Group

Celebrating 50 years of Excellence

116 South River Road
Bedford NH 03110
+1 603 668 7000
nainorwoodgroup.com