



FOR LEASE

873 RSF MEDICAL OFFICE

ALISO VIEJO MEDICAL CENTER

24502 Pacific Park Drive, Aliso Viejo, CA

GLOBAL HEALTHCARE SERVICES:

JOHN SCRUGGS
jscruggs@ngkf.com
949.608.2102
CA RE License #01796826

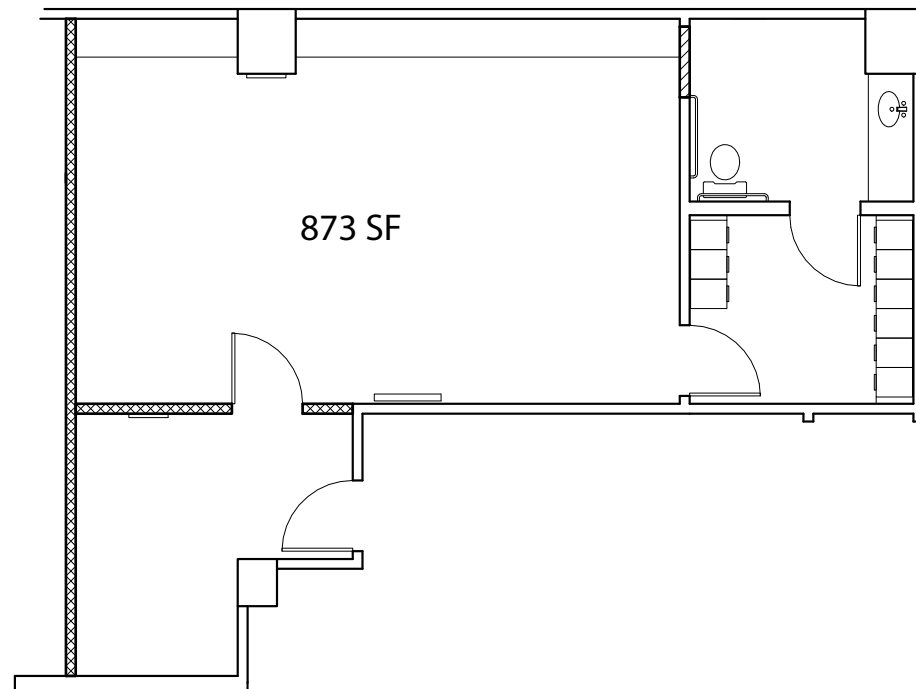
RYAN CLARK
rclark@ngkf.com
949.608.2058
CA RE License #01313065





PROPERTY HIGHLIGHTS:

- Existing 873 RSF medical office
- Class A medical office building
- \$2.35/SF NNN
- Open plan with top of the line finishes
- Waiting area, large room with interior restroom
- Perfect for psychiatrist type of use
- Prime South Orange County location with immediate access to the 73 freeway, local shops and restaurants
- Newly remodeled building with updated common areas

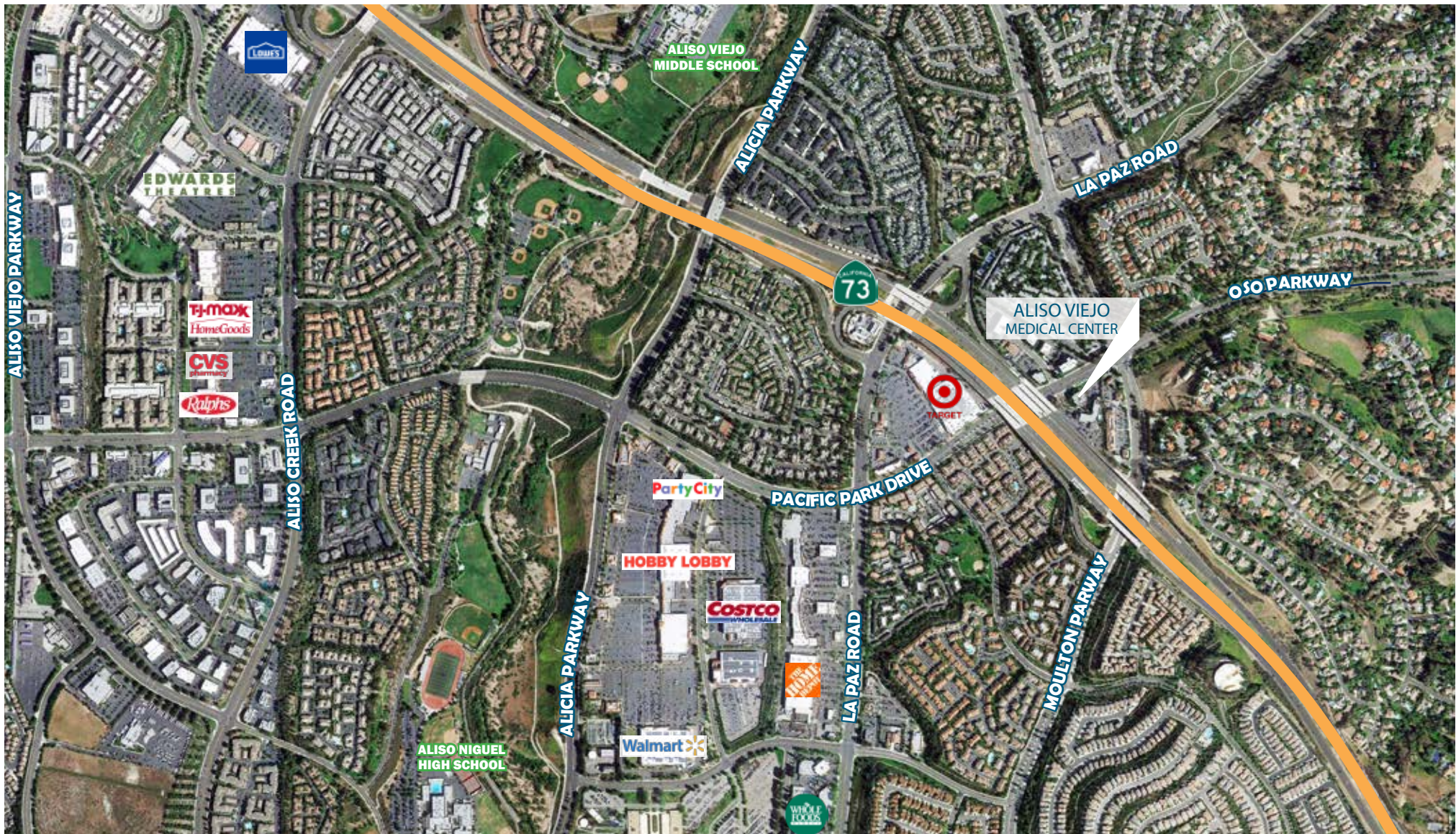


GLOBAL HEALTHCARE SERVICES:

JOHN SCRUGGS
jscruggs@ngkf.com
949.608.2102
CA RE License #01796826

RYAN CLARK
rclark@ngkf.com
949.608.2058
CA RE License #01313065





GLOBAL HEALTHCARE SERVICES:

JOHN SCRUGGS
 jscruggs@ngkf.com
 949.608.2102
 CA RE License #01796826

RYAN CLARK
 rclark@ngkf.com
 949.608.2058
 CA RE License #01313065



Procuring broker shall only be entitled to a commission, calculated in accordance with the rates approved by our principal only if such procuring broker executes a brokerage agreement acceptable to us and our principal and the conditions as set forth in the brokerage agreement are fully and unconditionally satisfied. Although all information furnished regarding property for sale, rental, or financing is from sources deemed reliable, such information has not been verified and no express representation is made nor is any to be implied as to the accuracy thereof and it is submitted subject to errors, omissions, change of price, rental or other conditions, prior sale, lease or financing, or withdrawal without notice and to any special conditions imposed by our principal.

4675 MacArthur Court, Suite 1600, Newport Beach, CA 92660 (Corporate CA RE License #01355491)