



BERKSHIRE HATHAWAY
HomeServices
Georgia Properties

COMMERCIAL DIVISION

FOR SALE

35+/- Industrial Acres

Just off Hwy 365 corridor—
where the growth is at
\$30,000 p.p.a



2581 Ramsey Circle @ White Sulphur, Gainesville

Marketed By:

Brent Hoffman

Berkshire Hathaway Home Services GA Properties
500 Jesse Jewell Pkwy., SE Suite 300, Gainesville, GA 30501
Direct- 770-533-6721
Office – 770-536-3007
Brent@BrentHoffman.com www.BrentHoffman.com



Brent Hoffman



BERKSHIRE HATHAWAY
HomeServices
Georgia Properties

COMMERCIAL DIVISION

Property Information

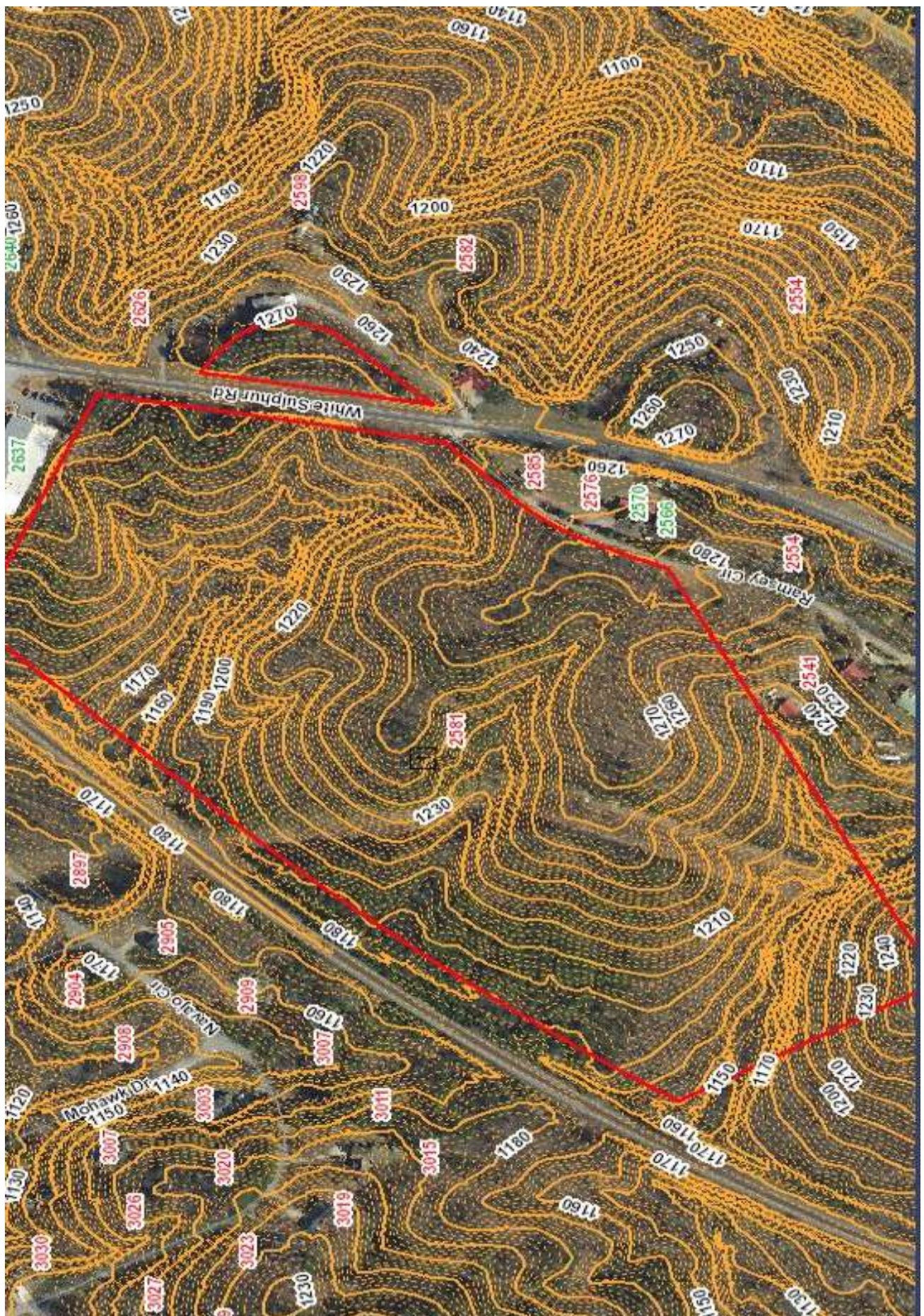
Reduced to \$30,000 ppa



- ♦ Just off expanding Hwy 365 / I-985
- ♦ This is ground zero for Industrial expansion in Hall County.
- ♦ On rail - Norfolk Southern Railway
- ♦ Sewer / water adjacent to property
- ♦ Water and Sewer Letter availability in hand. 16" water line and 12" sewer in the right of way
- ♦ Near Gateway Industrial Park and new inland Port development
- ♦ Currently zoned AR3—easy rezone to industrial - will sell subject to rezone

More info and video at: <https://www.brenthoffman.com/listings/I0320.html>





All materials furnished is from sources deemed reliable, but information has not been verified and is subject to errors or omissions

