

# PINE LANE PLAZA | PARKER ROAD & PINE LANE

COMMERCIAL SPACE FOR LEASE

12543 NORTH HIGHWAY 83, PARKER, CO 80134

CALL OR EMAIL FOR MORE INFO!  
1200, 1224, & 1277 SQUARE FOOT  
SUITES AVAILABLE



## SOUTH PARKER ROAD AND PINE LANE | PARKER, COLORADO



### PROPERTY FEATURES

- Great location on Parker Road south of Parker Adventist Hospital and Children's Hospital at Parker Adventist (134 licensed beds. 6,919 annual admissions. 23,185 annual emergency room visits)
- Ideal for Medical Office, General Office or Retail
- Join neighboring retail, medical and office tenants including 20 Mile Tap House, State Farm, and a wide variety of national, regional and local retailers

### DEMOGRAPHICS

	1 MILE	3 MILE	5 MILE
2017 Population	5,636	55,501	142,423
2022 Projected Population	6,356	62,160	158,083
2017 Average HH Income	\$88,144	\$110,908	\$120,002
2017 Households	2,692	21,047	51,204

### TRAFFIC COUNTS

South Parker Road	50,520 VPD
Lincoln Ave.	36,000 VPD



For More Information,  
Please Contact:

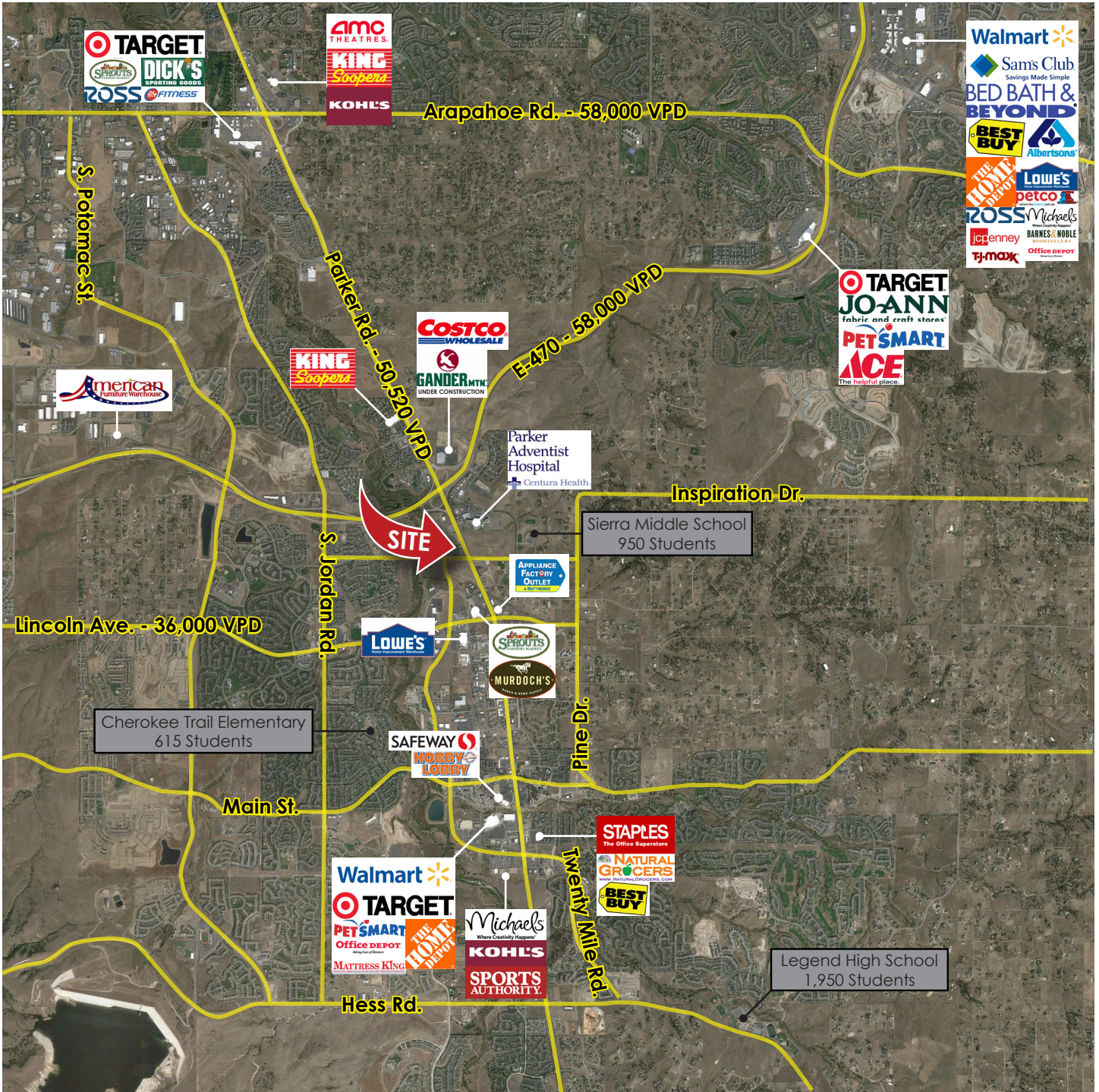
Sharon Kamen  
p. 303.729.0284  
c. 303.809.6878  
skamen@millerfrishman.com  
www.millerfrishman.com



The information disclosed herein has been secured by sources we believe to be reliable, but we make no representations or warranties, expressed or implied, as to the accuracy of the information. Tenant or investor must independently verify the information and bears all risk for inaccuracies.

# PINE LANE PLAZA | COMMERCIAL SPACE FOR LEASE

## 12543 NORTH HIGHWAY 83, PARKER, CO 80134



For More Information,  
Please Contact:  
  
Sharon Kamen  
p. 303.729.0284  
c. 303.809.6878  
skamen@millerfrishman.com  
www.millerfrishman.com

The information disclosed herein has been secured by sources we believe to be reliable, but we make no representations or warranties, expressed or implied, as to the accuracy of the information. Tenant or investor must independently verify the information and bears all risk for inaccuracies.

# PINE LANE PLAZA | COMMERCIAL SPACE FOR LEASE

## 12543 NORTH HIGHWAY 83, PARKER, CO 80134

### SUITE 214 - 1,224 SF AVAILABLE



### SUITE 222 - 1,200 SF AVAILABLE



The information disclosed herein has been secured by sources we believe to be reliable, but we make no representations or warranties, expressed or implied, as to the accuracy of the information. Tenant or investor must independently verify the information and bears all risk for inaccuracies.