

# FOR LEASE

## Free Standing Flexible Professional Office Northwest Orlando — Lee Road & John Young Parkway



**Flexible Space!**  
**Flexible Terms!**  
**Move In Ready!**  
Ideal for:  
Sales And  
Professional Offices

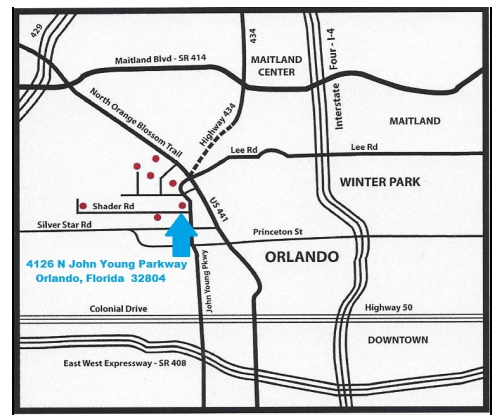
**FOR INFORMATION:**

J. Wallace and Associates, Inc.  
4800 N. Orange Blossom Trail  
Orlando, FL 32810

Phone: 407-**291-9292**  
Fax: 407-297-9292

### FEATURES

- 4,800 Square Feet
- 12' Ceilings in Open Areas
- Ground Level Rear Loading Doors
- Conditioned Storage Areas
- Convenient to the Cities of Orlando, Winter Park and Maitland
- Minutes from Major Roadways 414, 429, 408, and Interstate 4

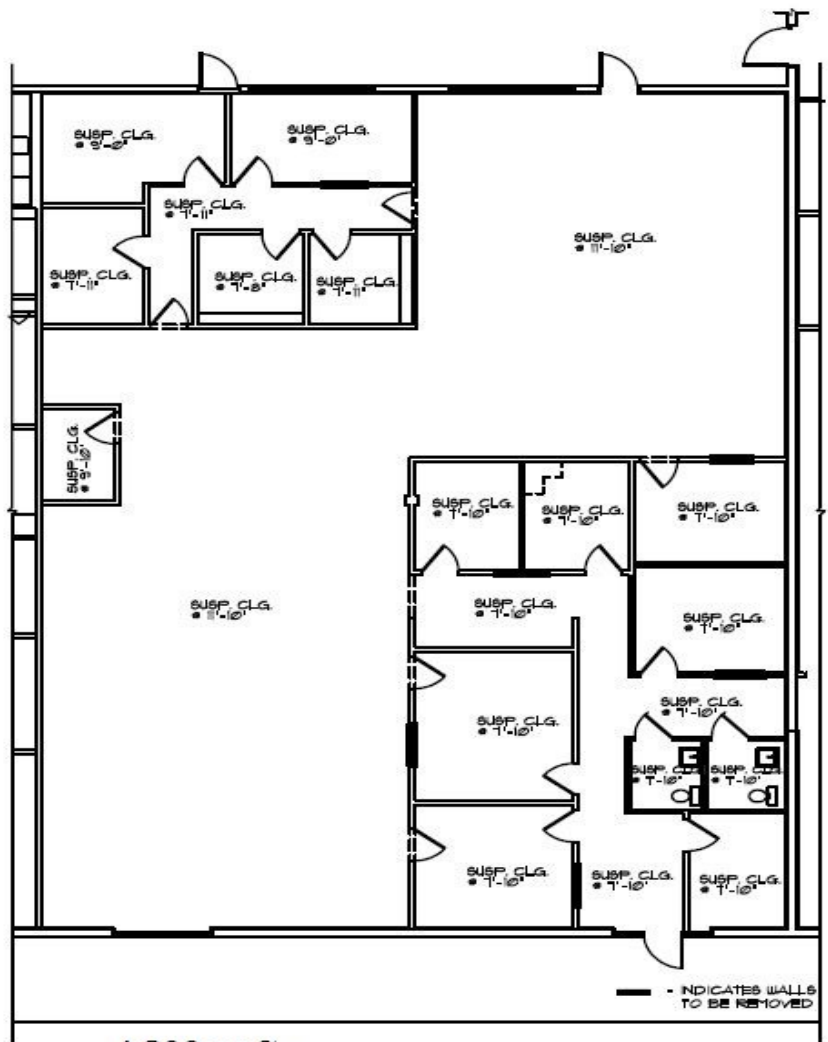


**JWallace**  
**& ASSOCIATES**  
Licensed Real Estate Broker

J. Wallace and Associates, Inc. is a Commercial Real Estate organization and a State Certified General Contractor. Although all information provided herein regarding a sale or rental is from sources deemed reliable, the information has not been verified and no express representation is made nor is any information to be implied as to the accuracy, submitted subject information to errors, omissions, changes of price, rental or other conditions, prior sale, lease or financing, and withdrawal without notice.

For Additional Information On This And  
Other Available Commercial and Industrial  
Properties Please Contact us at:

407-291-9292



4,800 sq.ft.

Existing Floor Plan  
1/8"=1'-0"

**JWallace**  
**& ASSOCIATES**  
Licensed Real Estate Broker

4800 N. Orange Blossom Trail  
Orlando, FL 32810  
Phone: 407-291-9292  
Fax: 407-297-9292  
www.jwallaceassociates.com  
Certified General Contractor  
CGC011457

**4146 North John Young Pkwy**  
**Orlando, FL 32804**