

For Sale
±12.248 Acres

**Temescal Valley: Mixed Use -
Multi-Family Development Land**



12705 Temescal Canyon Road, Corona, CA

For Further Information, Contact:

Gregory Ozimec
(949) 646-2727

greg@industrialbrokers.net
License #01821038

Tyler C. Pollock
(714) 423-6814

tyler@industrialbrokers.net
License #00558078

**B INDUSTRIAL
BROKERS, INC.**

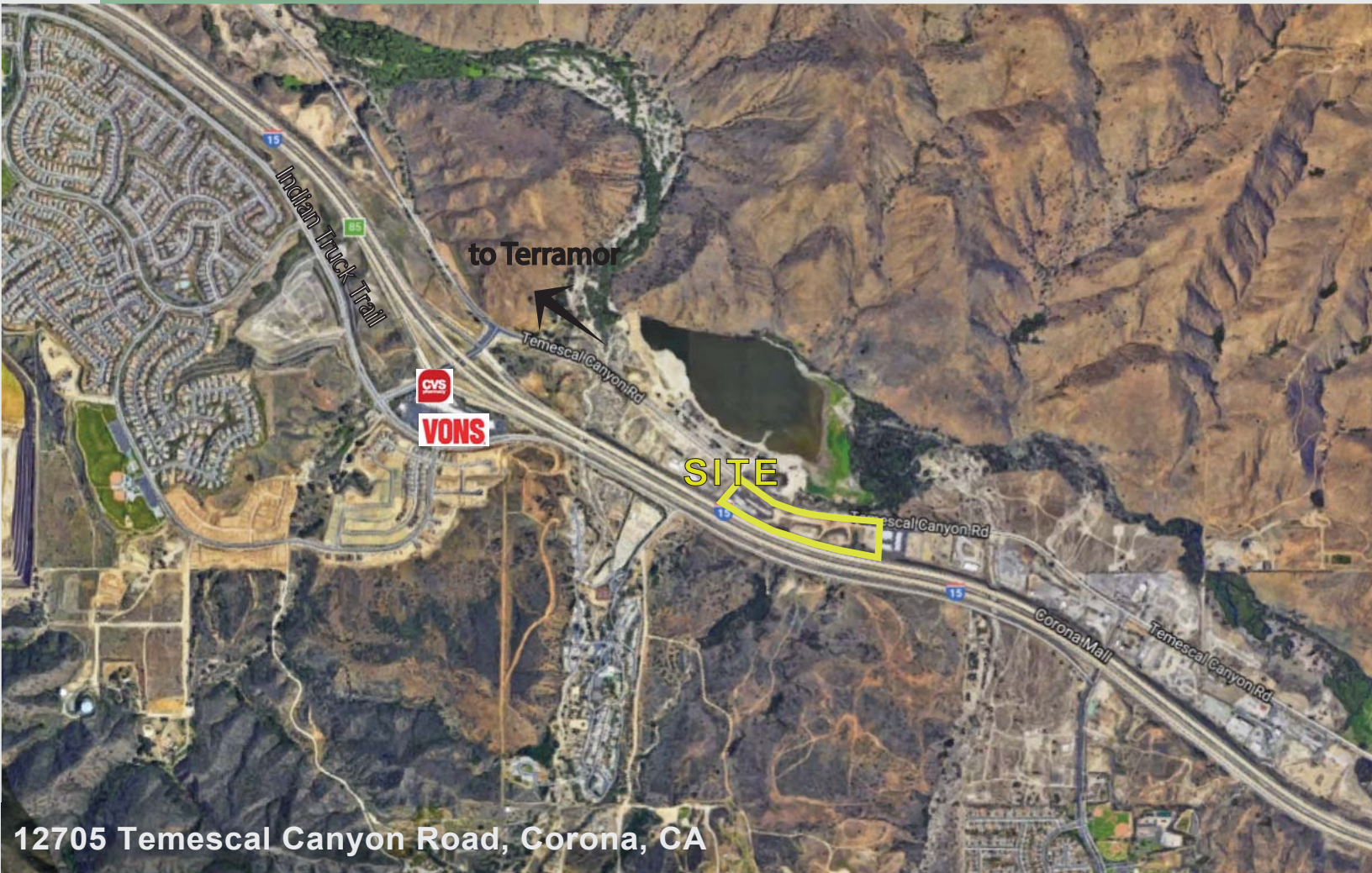
INDUSTRIAL BROKERS, INC.
P.O. Box 1355
Newport Beach, CA 92659-0355
Fax: (949) 625-7588
www.industrialbrokers.net

Features:

- ◆ ±12.248 Acres (gross)
- ◆ Zoning: MUA/HHDR
Mixed Use-Multifamily Land
- ◆ Highest High Density Res. (HHDR)
- ◆ 20 to 40 Units per Acre Possible
- ◆ Fast Track for Entitlements
- ◆ Easy Access to I-15 Freeway
- ◆ I-15 Freeway Frontage
- ◆ 2 minutes to Terramor.com & Sycamore
Creek new homes, Shops at Sycamore Creek
- ◆ 10 minutes to Corona Crossings Theatres & Mall
- ◆ APN# 391-070-046

For Sale
±12.248 Acres

Temescal Valley
Multi-Family Development Land



12705 Temescal Canyon Road, Corona, CA

For Further Information, Contact:

Gregory Ozimec
(949) 646-2727

greg@industrialbrokers.net
License #01821038

Tyler C. Pollock
(714) 423-6814

tyler@industrialbrokers.net
License #00558078

**B INDUSTRIAL
BROKERS, INC.**

INDUSTRIAL BROKERS, INC.
P.O. Box 1355
Newport Beach, CA 92659-0355
Fax: (949) 625-7588
www.industrialbrokers.net

