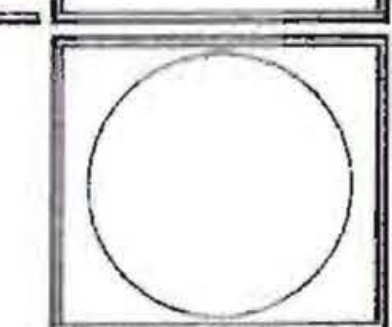


Steak 'n Shake

DESIGN 2000s / BRICK / 80 MPH / SEISMIC ZONE NO. 1
ALPHA ROAD / DALLAS, TEXAS



Steak 'n Shake
DESIGN 2000s / BRICK / 80 MPH / SEISMIC ZONE NO. 1
ALPHA ROAD / DALLAS, TEXAS



BUILDING DESIGN DATA

TOTAL SEATING CAPACITY: 88 SEATS

SEMI-FINISH: GROSS BUILDING AREA: 3888 SQ. FT.
HABITABLE BUILDING AREA: 3440 SQ. FT.

ELECTRICAL: 200/208V - 3 PHASE - 4 WIRE
CONNECTED LOAD: 184.9 KW
LIGHTING LOAD: 498 KW
KITCHEN EQUIPMENT LOAD: 180 KW
HVAC: 40 KW

PLUMBING: 1/2" WATER SERVICE (WATER USE: 10 GALLONS PER HOUR)
7 - 4" SEWER DISCHARGES
SEPARATE WATER METER FOR IRRIGATION SYSTEM (IF APPLICABLE)

MECH: SERVICE SIZE FOR UPWARD BURN INPUT AT 6" BC
WATER HEATER (100,000 BTUH)
HVAC ZONE: "C" (668,000 BTUH)

HVAC DESIGN: ZONE C
ORIENTATION: ASSUME ENTRY FACES SOUTH
EXTERIOR WALLS: 1/2" DRYWALL, VAPOR BARRIER
R-10 BATT INSULATION, 1/2" PLYWOOD, 1" AIR SPACE, BRICK VENEER
GLASS: FIXED, 1" INSULATED
ROOF: SINGLE PLY, 4" RIGID ROOF INSULATION (R-30),
1/2" PLYWOOD DECK
FLOOR: 4" CONCRETE, 2" PERIMETER INSULATION
HEAT LOSS: 100,000 BTUH BUILDING
HEAT GAIN: 104,000 BTUH BUILDING + PEOPLE
100,000 BTUH EQUIPMENT
204,000 BTUH TOTAL GAIN
OUTSIDE AIR TEMPERATURE: 0° HEATING / 95° COOLING

SEISMIC: THE BUILDING IS DESIGNED FOR SEISMIC ZONE NO. 1
S_sA₁ < 0.10 S_sA₂ < 0.10
SEISMIC HAZARD EXPOSURE GROUP - I
SEISMIC PERFORMANCE CATEGORY - C
BASIC STRUCTURAL SYSTEM - LIGHT FRAMED WALLS w/ SHEAR PANELS
SEISMIC RESISTING SYSTEM - LIGHT FRAMED WALLS w/ SHEAR PANELS
R = 6.0 C_u = 4.0 S = 2.0
SEISMIC ANALYSIS PROCEDURE - DUAL LATERAL FORCE PROCEDURE
IF CONSTRUCTION IS TO BE IN A DIFFERENT ZONE, ADDITIONAL STRUCTURAL DESIGN WILL BE REQUIRED.

ROOF DEPTH: PER LOCAL CODE - 10" MINIMUM - SEE FOUNDATION DETAILS, SHEETS ST-3 & ST-4

CONSTRUCTION CLASSIFICATION: IBC, TYPE V UNPROTECTED A-3 OCCUPANCY
BOCA / OBC, TYPE VB A-3 OCCUPANCY
UBC, TYPE VI UNPROTECTED A-3 OCCUPANCY

DRAWING INDEX

SITE PLANS	
SD-1	SD-1 SITE DETAILS (00)
SN-1	SN-1 SIGN DETAILS (00)
A-1	A-1 FLOOR PLAN (00)
A-2	A-2 SCHEDULES & DETAILS (00)
A-3	A-3 EXTERIOR ELEVATIONS (00)
A-4	A-4 SECTIONS (00)
A-5	A-5 ROOF PLAN & DETAILS (00)
A-6	A-6 WINDOW DETAILS (00)
A-7	A-7 ENTRY & RESTROOM DETAILS (00)
A-8	A-8 CERAMIC WALL TILE (00)
A-9	A-9 FLOOR TILE PLAN (00)
A-10	A-10 INTERIOR ELEVATIONS (00)
ST-1	ST-1 FOUNDATION PLAN & DETAILS (016)
ST-2	ST-2 ROOF FRAMING PLAN (016)
ST-3	ST-3 STRUCTURAL DETAILS (016)
ST-4	ST-4 FOUNDATION DETAILS (016)
P-1	P-1 PLUMBING PLAN (00)
P-2	P-2 PLUMBING DETAILS & ISOMETRICS (00)
P-3	P-3 KIT. EQUIP. ROUGH-IN & SCHEDULES (00)
H-1	H-1 HVAC PLAN (00)
H-2	H-2 HVAC SCHEDULES (00)
H-3	H-3 HVAC DETAILS (00)
H-4	H-4 EXHAUST SYSTEM PLAN & DETAILS (00)
H-5	H-5 WIRING DIAGRAMS (00)
H-6	H-6 FIRE SUPPRESSION SYSTEM (7'-6 1/2" HOOD & 4'-0" HOOD) (00)
E-1	E-1 LIGHTING PLAN & SCHEDULE (00)
E-2	E-2 POWER & SIGNAL PLAN & DETAILS (00)
E-3	E-3 PANEL SCHEDULES (00)
E-4	E-4 SCHEDULES (00)
E-5	E-5 KITCHEN EQUIPMENT ROUGH-IN (00)
K-1	K-1 EQUIPMENT & BLOCKING PLAN (00)

PRIOR TO STARTING CONSTRUCTION THE GENERAL CONTRACTOR SHALL BE RESPONSIBLE TO VERIFY THAT ALL NECESSARY PERMITS AND APPROVALS HAVE BEEN OBTAINED. (EXCLUDING BUILDING PERMITS AND BOARD OF HEALTH-KITCHEN EQUIPMENT FABRICATION APPROVALS WHICH ARE TO BE OBTAINED BY THE OWNER) NO CONSTRUCTION OR FABRICATION OF ANY ITEM SHALL BEGIN UNTIL THE GENERAL CONTRACTOR HAS RECEIVED ALL APPROVED PLANS AND OTHER DOCUMENTATION FROM ALL OF THE PERMITTING AND ANY OTHER REGULATORY AUTHORITIES HAVING JURISDICTION OVER THE PROJECT. FAILURE OF THE GENERAL CONTRACTOR TO FOLLOW THIS PROCEDURE SHALL CAUSE THE GENERAL CONTRACTOR TO ASSUME FULL RESPONSIBILITY FOR ANY SUBSEQUENT MODIFICATION OF THE WORK MANDATED BY ANY REGULATORY AUTHORITY.

ASBESTOS FREE: NO ASBESTOS NOR PRODUCTS CONTAINING ASBESTOS SHALL BE INSTALLED IN THIS PROJECT. GENERAL CONTRACTOR SHALL PROVIDE TO OWNER AN AFFIDAVIT CERTIFYING SAME AT COMPLETION OF CONSTRUCTION.

REVISIONS	MARCH 5, 2002

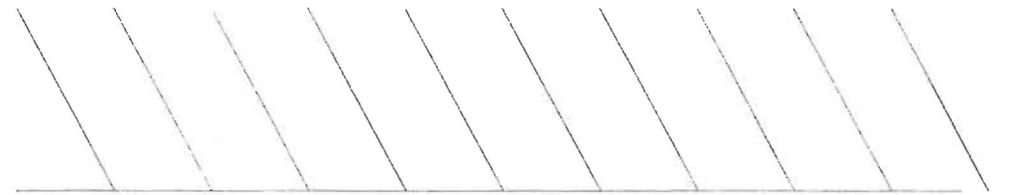
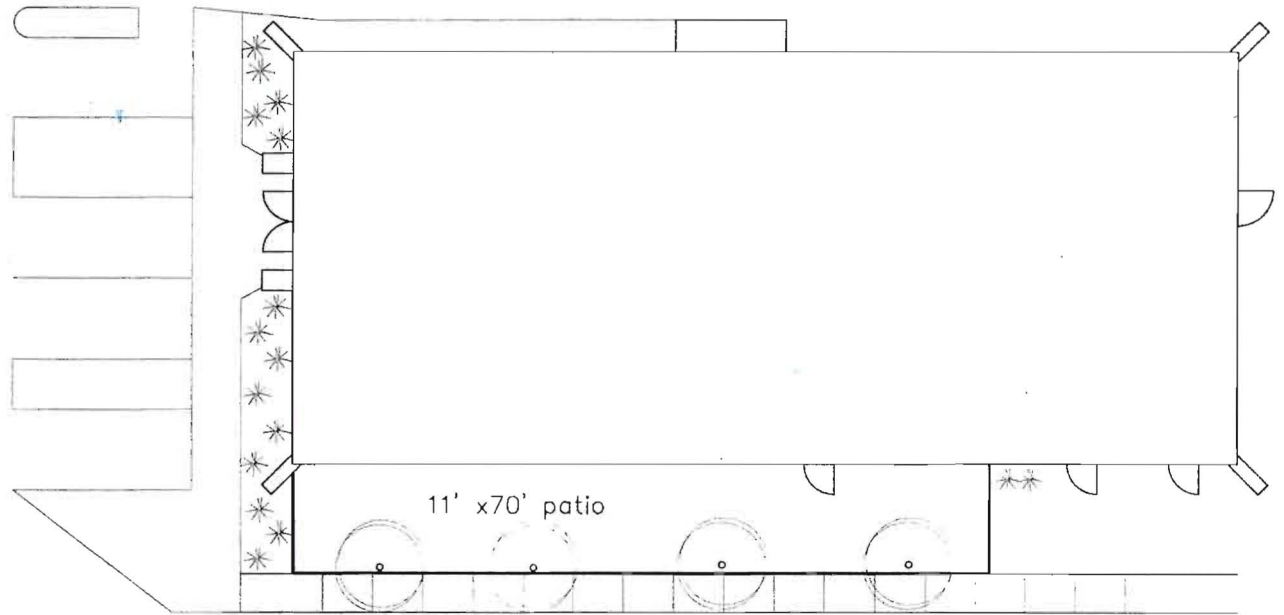
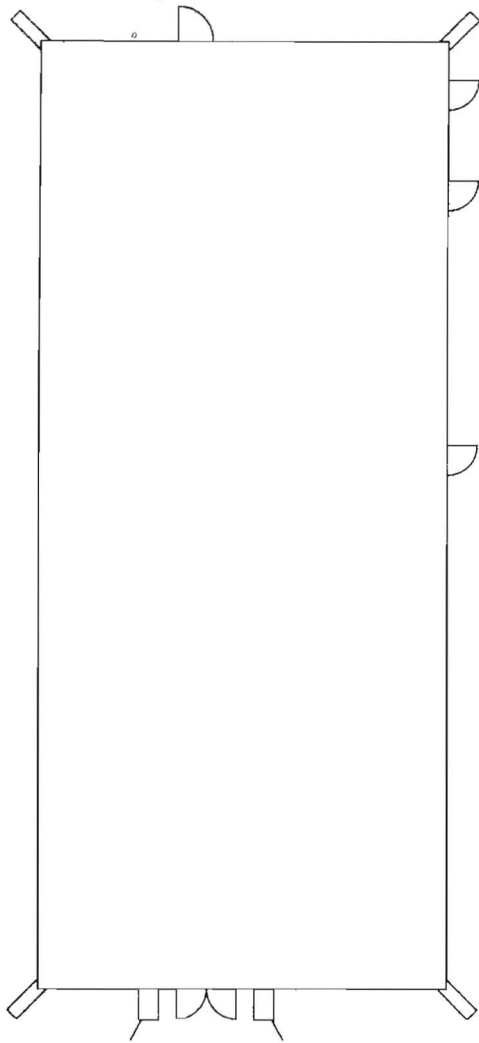
Dallas, TX
Galleria Trade Area



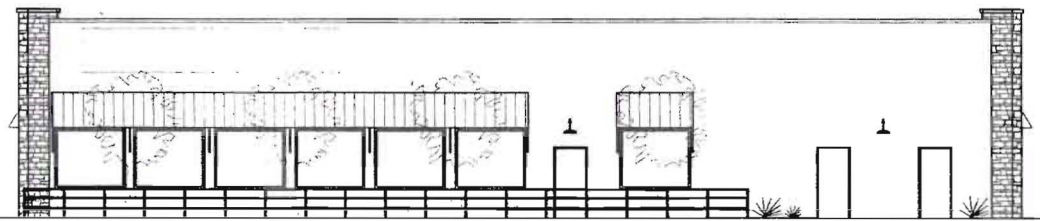
SRS Real Estate Partners 8343 Douglas Ave, Ste 200 Dallas, TX 75225 - 214.560.3200 - www.srsre.com
The information contained herein is for informational purposes only and does not constitute an offer of any financial product or service. ©2007 SRS Real Estate Partners. All rights reserved. No representation is made by the information contained herein.

Aerial Date: Oct 2007

RENOVATION of 5782 Alpha Rd., Dallas, TX



(A) NORTH ELEVATION
1/8" = 1'-0"



(B) WEST ELEVATION
1/8" = 1'-0"

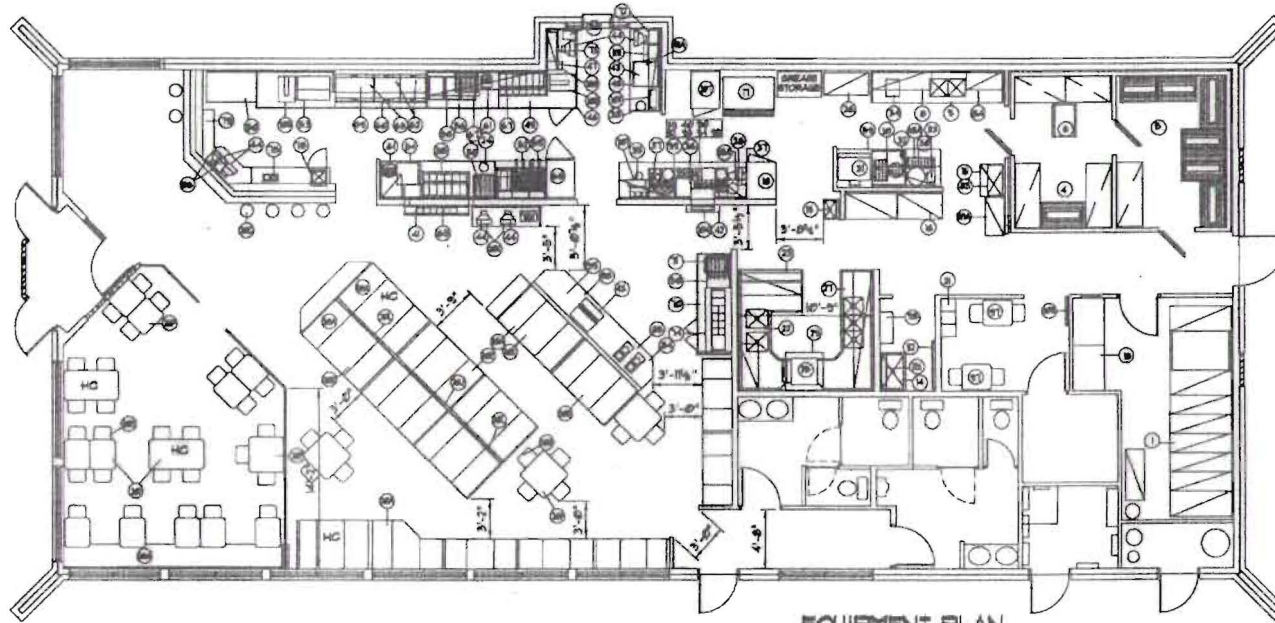
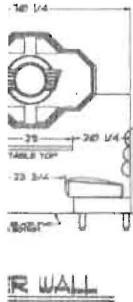
GENERAL BLOCKING NOTES:

1. SEE KITCHEN EQUIPMENT SHOP DRAWINGS FOR EXACT LOCATIONS OF BLOCKING.
2. ALL WALL BLOCKINGS TO BE OF 2"x10" OR 2"x12" OR 5/8" PLYWOOD.
3. ALL BLOCKINGS REMOVED BY PLUMBER OR ELECTRICIAN TO RUN THEIR ROUGH-INS MUST BE REPLACED BY THE TRADE THAT REMOVED THEM.

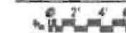
NOTE: ALL FIXED EQUIPMENT SHALL BE CAPABLE OF RESISTING HORIZONTAL FORCES EQUAL TO 5% OF FULL WEIGHT, INCLUDING OVERTURN EFFECTS.

SEATING:

- 9 - 4 SEAT BOOTHS = 36
- 4 - 4 SEAT TABLES = 16
- 1 - 3 SEAT BOOTHS = 9
- 2 - 3 SEAT TABLES = 6
- 5 - 2 SEAT BOOTHS = 10
- 1 - 2 SEAT TABLES = 4
- 6 - COUNTER = 6
- TOTAL SEATING = 93



EQUIPMENT PLAN



THIS INFORMATION IS SCHEMATIC IN NATURE. VERIFY EXACT REQUIREMENTS WITH KITCHEN EQUIPMENT SHOP DRAWINGS.

SCHEDULE OF EQUIPMENT

CON	TRF	QTY	DESCRIPTION	TRF	QTY	DESCRIPTION	TRF	QTY	DESCRIPTION	TRF	QTY	DESCRIPTION
BOO	2603	1	BOOSTER CHAIR STORAGE CAB.	40	2	DIPPER WELL W/ FILL FACET	60	1	TICKET HOLDERS	81	1	8.5 CONDIMENT LID (W/ 30)
BOO	2604	1	TABLE BASE LEVELERS	41	1	HEAT LAMP	66	1	OPEN NUMBER	83	1	SHAKE CAN HOLDER (W/ 30)
BOO	2605	1	BOOSTER CHAIR STORAGE CAB.	42	1	MATRRESS MOUNTAIN BURL	67	1	WALL SHELF (ABOVE 45 656)	84	2	SHAKE BASE HOLDER (W/ 30)
BOO	2606	1	BOOSTER CHAIR STORAGE CAB.	43	2	BODIA DISPENSER W/ ICE BIN	68	1	REACHIN FREEZER W/ HALF DRN	85	1	CUSTOM LID (W/ 30)
BOO	2607	2	CASH REGISTERS STAND	44	6	CASH REGISTERS	69	1	BREAD RACK	86	1	CUSTOM LID HOLDER (W/ 30)
BOO	2608	4	STEAK W/ BRNKG GLASS PANELS	45	1	OPEN NUMBER	70	1	SCF/BALAD CTR W/ BALAD CARE	87	1	OPEN NUMBER DINNER TABLE
BOO	2609	1	EMPLOYEE LOCKERS	46	1	DRIVE THRU BAGGING COUNTER	71	1	HOT FOOD WELL	88	1	UTILITY SHELF
BOO	2610	1	SOLID DISHTABLE W/ BNGS	47	1	WALL SHELF	72	2	2-HOLE CONDIMENT DISPENSER	89	1	BEVERAGE DISP. (OPTIONAL)
BOO	2611	1	DISH RACK SHELVES	48	1	DRIVE THRU DRINK COUNTER	73	1	4-HOLE CONDIMENT DISPENSER	90	1	CUSTOM BAG HOLDER
BOO	2612	1	CHEESE PUMP	48A	1	WALL SHELF	74	1	BALAD DRYLAY CARE	91	2	CUSTOM CUP DISPENSER H.D.R
BOO	2613	1	CHEESE PUMP (OPTIONAL)	49	1	MAIN LINE DRESSING TABLE	75	1	COFFEE WARMER	92	1	LID HOLDER
BOO	2614	1	DISH WASHER	50	1	TOP EXTENSION FOR GRILL BOX	76	1	OPEN NUMBER	93	2	EMPLOYEE COAT RACK
BOO	2615	1	CAN RACK	51	1	OPEN NUMBER	77	1	OPEN NUMBER	94	1	PASS THRU SHELF AND TRAPE
BOO	2616	1	CLEAN DISHTABLE W/ BNGS	52	2	FRYER SYSTEM W/ DUMP STATION	78	1	8.5 SINK (PART OF TR)	95	2	PORTABLE HEAT LAMP
BOO	2617	1	HOT FUDGE WARMER	53A	1	FRYER FILTER SYSTEM	79	1	LUNCH COUNTER WITH	96	1	OPEN NUMBER
BOO	2618	1	CONDENSATE HOOD	53B	1	DUMP STATION HEAT LAMP	80	1	CONDENSATED FRONT PANEL	97	1	EXHAUST CONDITIONING BOX
BOO	2619	1	KETTLE	54	1	GRILL BOX	81	1	GRILL THERM (OPTIONAL)	98	1	EYE WASH FAUCET
BOO	2620	1	KETTLE STAND	54	1	HEATED DRAWER UNIT	81	1	OPEN NUMBER	99	1	CUSTOM TRM PACKAGE
BOO	2621	1	HALF-SIZE CONVECTION OVEN	55	1	PASS THRU DRESSING TABLE	82	1	OPEN NUMBER	100	1	OPEN NUMBER
BOO	2622	1	BACK STREAM TABLE	56	1	FRONT STREAM TABLE WITH DRAIN	83	1	CARBONATOR SHELF	101	1	OPEN NUMBER
BOO	2623	1	8TH RTL. WALL PANEL	57	1	OPEN NUMBER	84	1	COFFEE MAKER	102	1	CUSTOM DROOP HOLDER
BOO	2624	1	ELCER	58	3	MICROWAVE OVEN	85	1	ICEO TEA DISPENSER	103	1	CUSTOM TOP HOLDER
BOO	2625	1	WALL SHELF	59	1	HOOD SYSTEM W/ FINE SYSTEM	86	3	DIPPER LAMP	104	1	
BOO	2626	1	WALL SHELF	60	1	GRILL STAND	87	1	OPEN NUMBER	105	1	
BOO	2627	1	MILK DISPENSER	61	2	TOASTER	88	1	WAITRESS STATION	106	1	
BOO	2628	3	THREE BUNDLE MILK SHAKE MIXR	62	2	24" GRIDDLE	89	1	OPEN NUMBER	107	1	
BOO	2629	1	ICEO TEA DISPENSER	63	1	36" GRIDDLE	90	1	CUSTOM STUMP NAILS	108	1	
BOO	2630	1	ICE CREAM MOUNTAIN	64	1	OPEN NUMBER	91	1	STUMP JARS & PUTS (W/ 30)	109	1	



Steak n Shake
DESIGN 2000S

PROJECT NO: 10002 DPL
DRAWN BY: BJA
CHECKED BY:
SCALE: 3/16"
DATE: JAN 30, 2000
REVISIONS:
0902 AN / ALC / APRIL 6, 2001
0902 AU / JON / MAY 8, 2001
0902 SA / JON / JUNE 15, 2001
0902 SA / JON / AUG 20, 2001

EQUIPMENT PLAN
K-100