

# 5525 ETIWANDA AVENUE | TARZANA, CA



## FEATURES

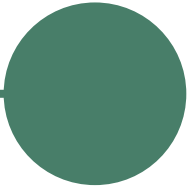
- > On-site Pharmacy
- > Street Amenities Within Walking Distance
- > Direct 101 Freeway Access
- > Direct Access to Providence Tarzana Medical Center

### ANGIE WEBER

First Vice President  
+1 818 502 6750  
angie.weber@cbre.com  
Lic. 01015031

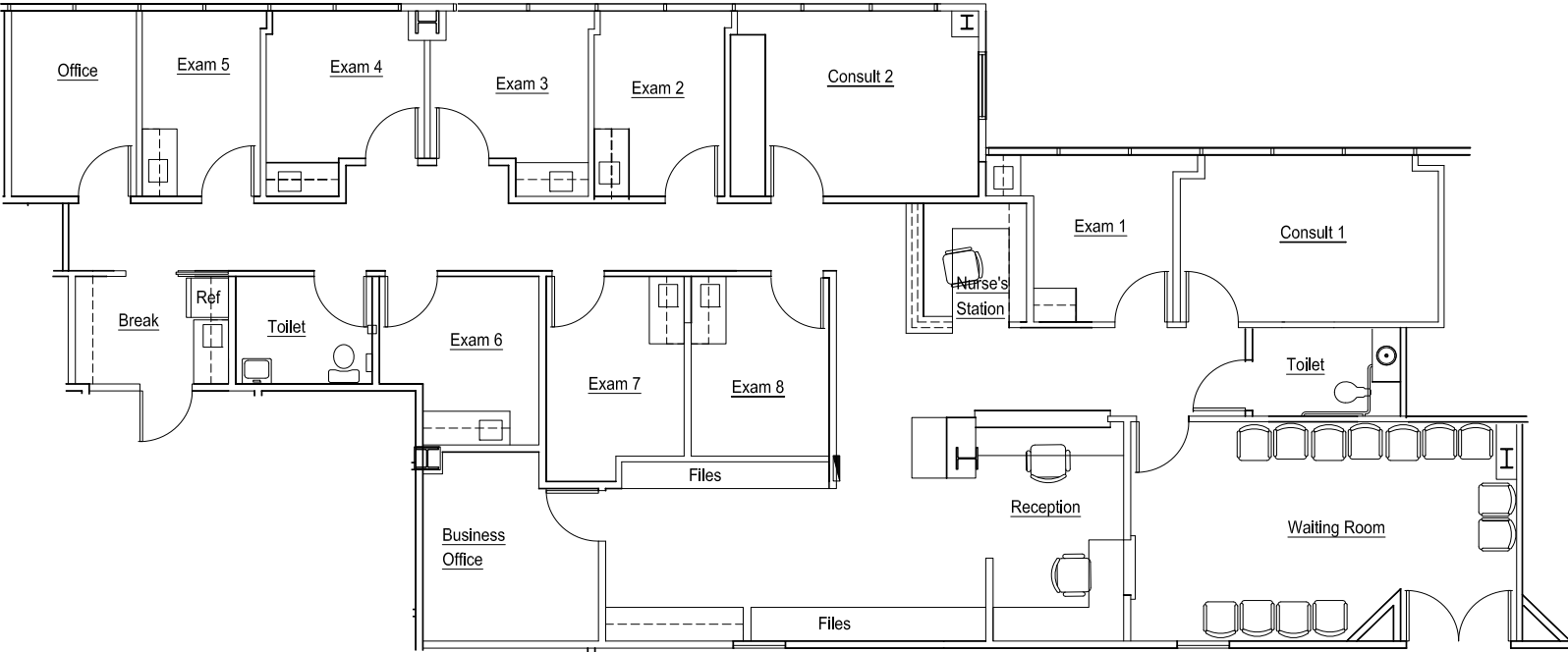
### DANA NIALIS

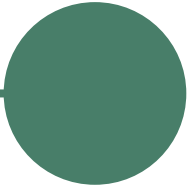
Senior Associate  
+1 818 502 6774  
dana.nialis@cbre.com  
Lic. 01947265



# FLOOR PLANS

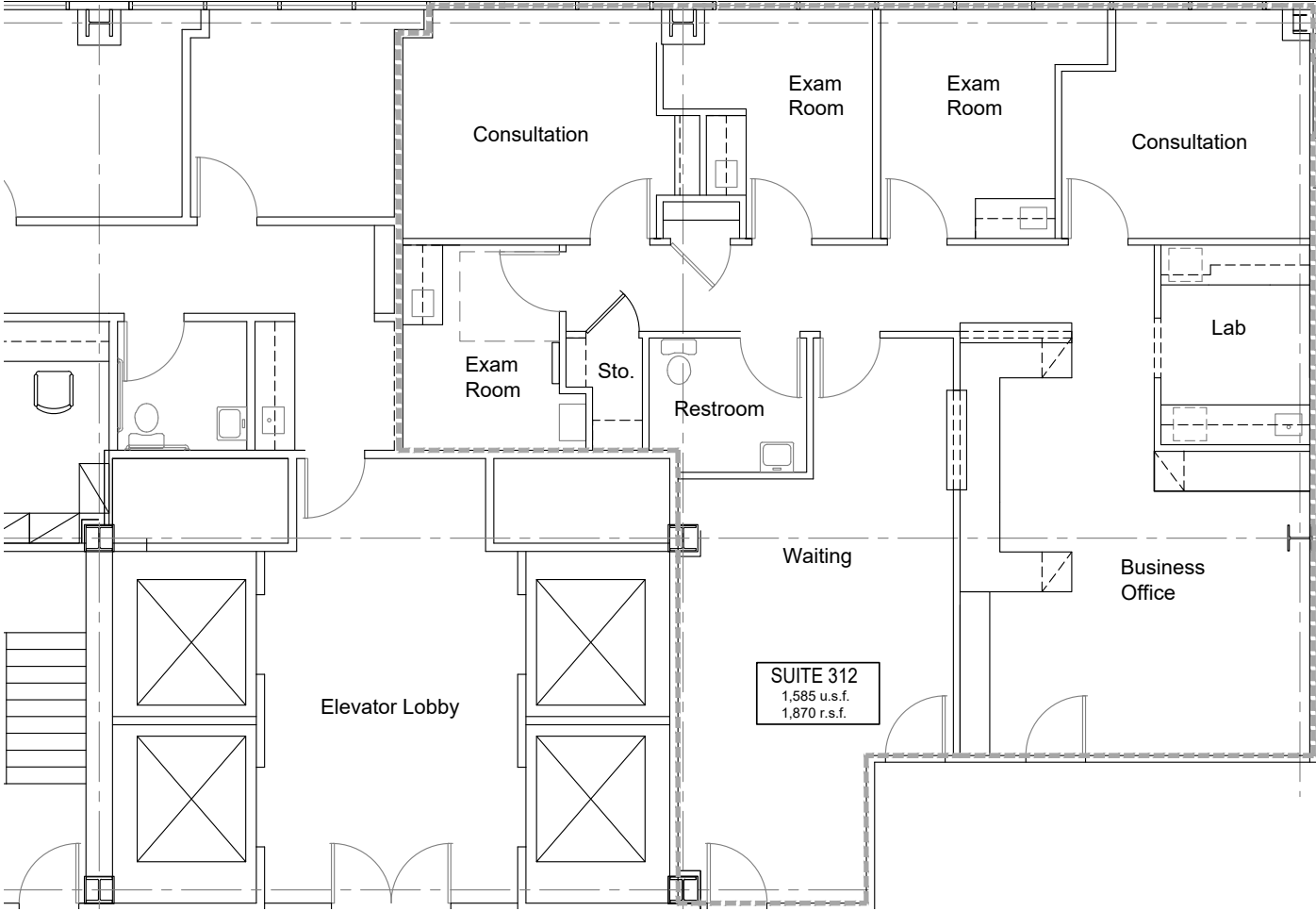
## SUITE 211: ±2,959 RSF

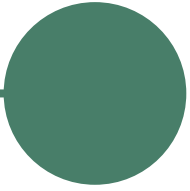




# FLOOR PLANS

## SUITE 312: ±1,870 RSF





# FLOOR PLANS

## SUITE 305: ±3,483 RSF

\*AVAILABLE 5/1/2019

