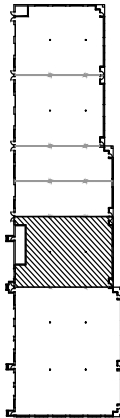
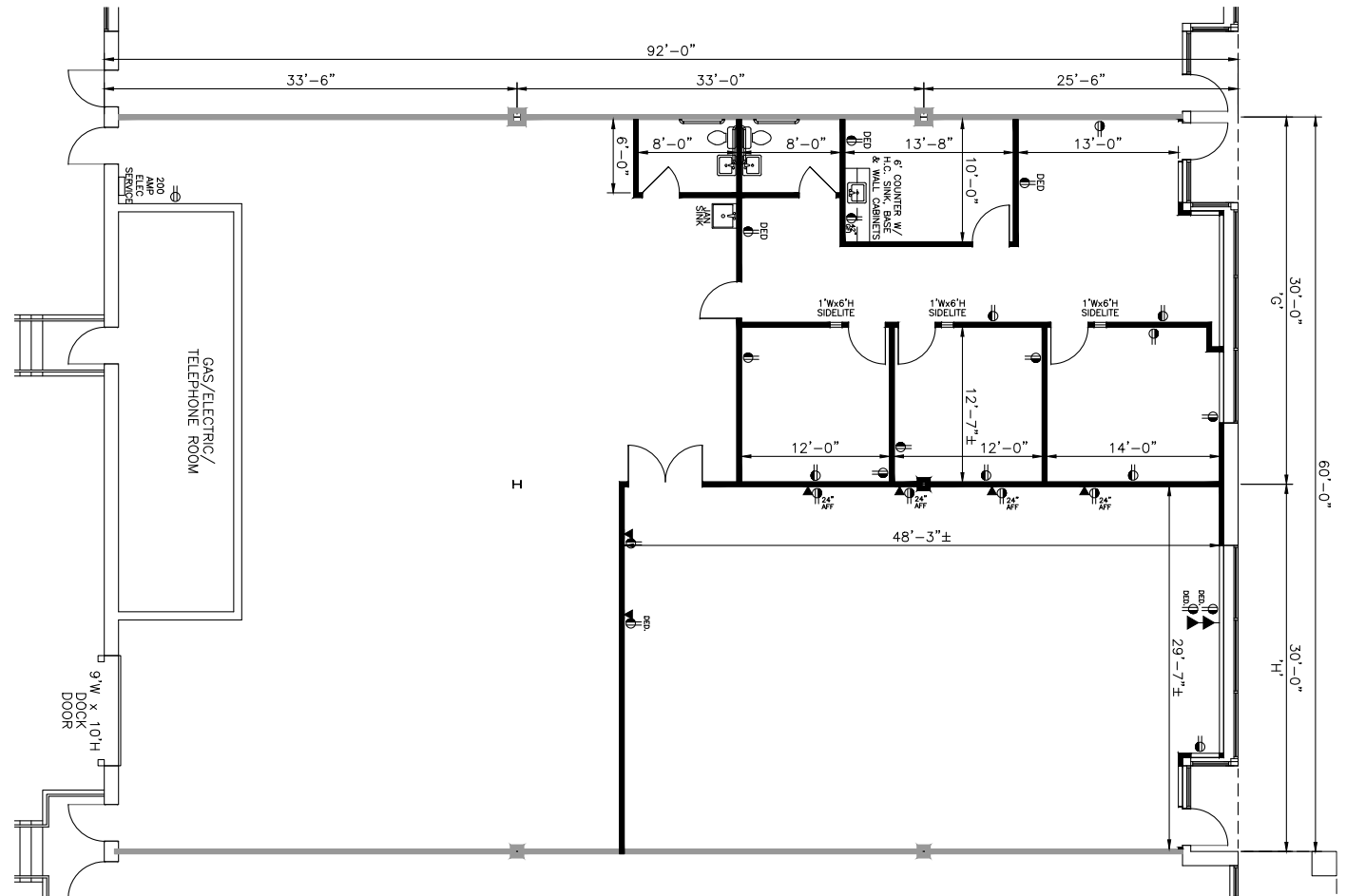


**TOTAL SF AVAILABLE:**  
 5,221 SF

**KEY PLAN**  
 NOT TO SCALE



NOTE: THIS SPACE PLAN IS SUBJECT TO EXISTING FIELD CONDITIONS. THIS DRAWING IS PROPRIETARY AND THE EXCLUSIVE PROPERTY OF ST. JOHN PROPERTIES, INC. ANY DUPLICATIONS, DISTRIBUTION, OR OTHER UNAUTHORIZED USE IS STRICTLY PROHIBITED.



## About Dolfield Business Park

Dolfield Business Park is a 44-acre Baltimore County business community is located near Red Run Boulevard in Owings Mills, MD. The unified architecture of St. John Properties' six completed buildings, which comprise more than 177,000 square feet of flex/R&D and office product, provides Dolfield Business Park a campus-like business environment. The park also includes 11155 Dolfield Boulevard, a two-story, 71,400 sq. ft. office building.

Tenant sizes from 1,500 square feet to 39,120 square feet of space offer companies straight-forward, economical and high-utility space in a covenant-protected, well-maintained atmosphere.



## TWO-STORY OFFICE SPACE

### TWO-STORY OFFICE BUILDINGS

11155 Dolfield Boulevard 71,400 SF

### TWO-STORY OFFICE SPECIFICATIONS

Suite Sizes	1,275 up to 16,575 SF
Ceiling Height	9 ft. clear minimum
Offices	Built to suit
Parking	4.5 spaces per 1,000 SF
Heat (1st Floor)	Heat pump (Electric)
Heat (2nd Floor)	Gas
Roof	EPDM Rubber
Exterior Walls	Brick on block
Zoning	ML-IM



## FLEX / R&D SPACE

### SINGLE-STORY FLEX / R&D BUILDINGS

1 Easter Court	32,158 SF
3 Easter Court	31,121 SF
5 Easter Court	32,700 SF
7 Easter Court	18,000 SF
8 Easter Court	31,560 SF <b>LEED SILVER</b>
9 Easter Court	30,120 SF
10 Easter Court	39,120 SF <b>LEED SILVER</b>
11 Easter Court	33,120 SF <b>LEED GOLD</b>

### FLEX / R&D SPECIFICATIONS

LEED	Core & Shell
Suite Sizes	1,500 up to 3,000 SF
Ceiling Height	16 ft. clear minimum
Offices	Built to suit
Parking	4 spaces per 1,000 SF
HVAC	Gas
Roof	EPDM Rubber & TPO
Exterior Walls	Brick on block
Loading	Dock or drive-in
Zoning	BM-IM (1 Easter Court) ML-IM (All others)



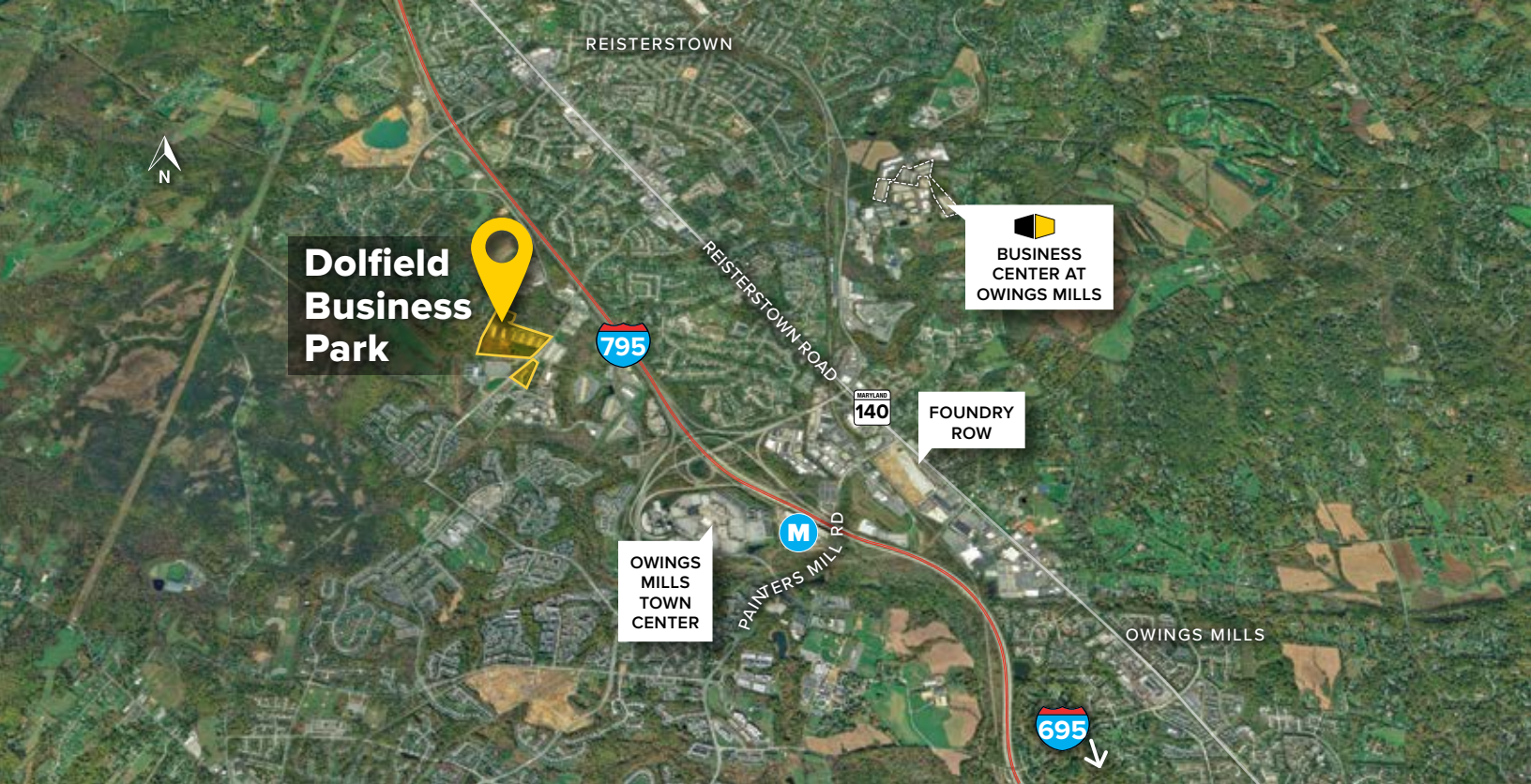
## SINGLE-STORY OFFICE SPACE

### SINGLE-STORY OFFICE BUILDINGS

Future Office Building 35,360 SF

### SINGLE-STORY OFFICE SPECIFICATIONS

Suite Sizes	1,500 SF and up
Ceiling Height	10 ft. clear minimum
Offices	Built to suit
Parking	4 spaces per 1,000 SF
Heat	Gas
Roof	TPO
Exterior Walls	Brick on block
Zoning	ML-IM



**Distances to:**

- Baltimore (Downtown) ..... 15 miles
- BWI Airport ..... 22 miles
- I-95 ..... 15 miles
- I-695 (Baltimore Beltway) ..... 4 miles
- I-795 ..... 2 miles
- Towson ..... 13 miles
- Westminster ..... 16 miles

**About St. John Properties**

St. John Properties, Inc. is a full-service real estate company headquartered in Baltimore, Maryland. The company owns, manages and has developed nearly 18 million square feet of commercial real estate, including flex/R&D, warehouse, office and retail space in Maryland, Colorado, Louisiana, Nevada, Pennsylvania, Utah, Virginia and Wisconsin.



2560 Lord Baltimore Drive  
 Baltimore, MD 21244  
 410.788.0100 | SJPI.COM  
 CO | MD | NV | PA | LA | UT | VA | WI

**For additional leasing information or to schedule a tour, contact:**

**Will McCullough** *Leasing Agent*  
 410.369.1207 | [wmccullough@sjpi.com](mailto:wmccullough@sjpi.com)

**Richard Williamson** *SVP Leasing*  
 410.788.0100 | [rwilliamson@sjpi.com](mailto:rwilliamson@sjpi.com)



*Follow us on social media*



This information contained in this publication has been obtained from sources believed to be reliable. St. John Properties makes no guarantee, warranty or representation about this information. Any projections, opinions, assumptions or estimates used here are for example only and do not represent the current or future performance of the property. Interested parties should conduct an independent investigation to determine whether the property suits their needs.  
 07/16