



The Daisy Place

IMAGINE THE POSSIBILITIES

The Project



The Daisy Place is an up and coming premier location in Clearfield, PA. The concept is to provide commercial services for the residents of the surrounding communities with convenient options they may not be able to get elsewhere.

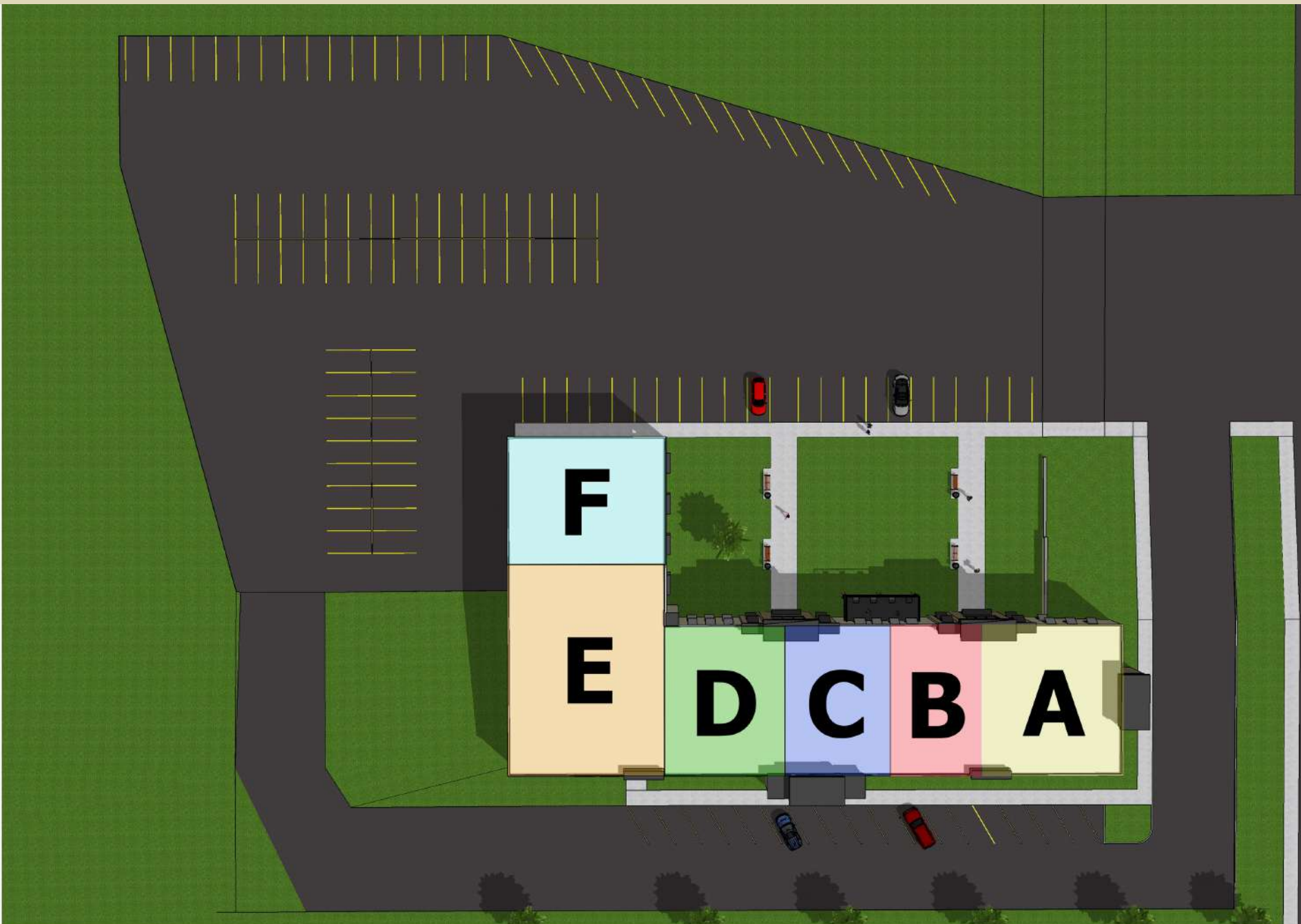
The building sits at a crosshairs of the community, right in front of an office park with multiple apartment buildings. State Route 322 runs along the front of the building with tons of traffic that commutes on a daily basis. This provides exclusivity for the residents that live there, as well as convenient place to stop for those traveling.

We are currently in the design and construction phase of the project: the perfect time to find your place as a part of our team. Contact us today! We'd love to discuss the possibilities of this amazing opportunity.

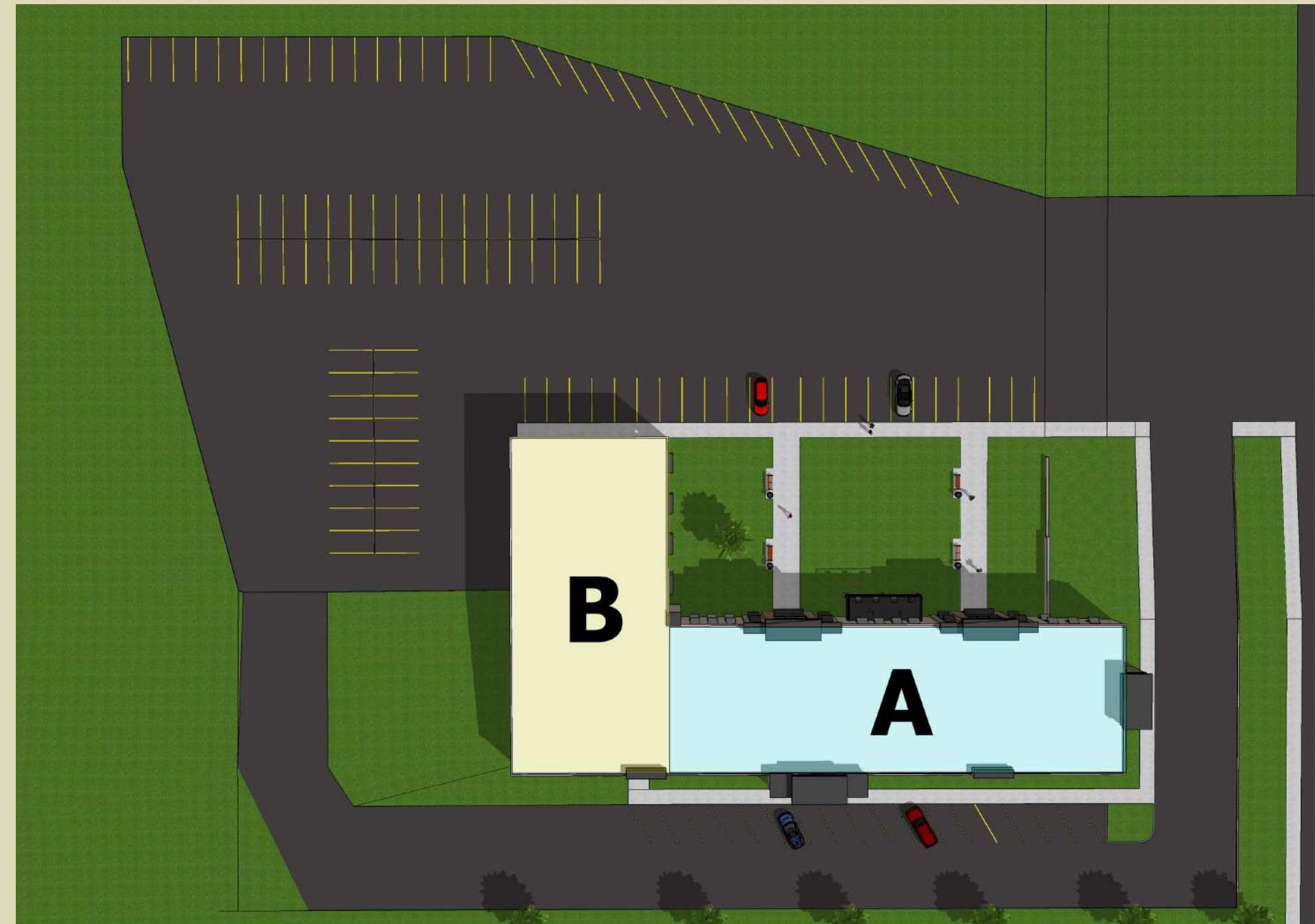
THE PROJECT | THE DAISY PLACE

The Opportunities

MAIN LEVEL



UPPER LEVEL



The Opportunities

MAIN LEVEL



The Main Level will be comprised of six suites, highlighted by the variety of colors you see above. Each suite has a separate entrance from the courtyard. For more information on the individual suites, please see page 5.

The idea is to house a variety of businesses that will service the needs of the residential buildings and also benefit from the traffic of the other businesses. We want to create a community of businesses that really makes our neighborhood shine.

UPPER LEVEL

The Upper Level will be made up of a food court with a variety of restaurants and general seating to service all customers. We want to create a place for families, business associates, and friends to come and enjoy time together, even if they don't all want the same cuisine.

We plan to add an outdoor deck to provide outdoor seating for the patrons of the restaurants and provide a seamless transition from the building to the courtyard area. We want this to be a place that is enjoyed by employees and customers alike.



The Opportunities

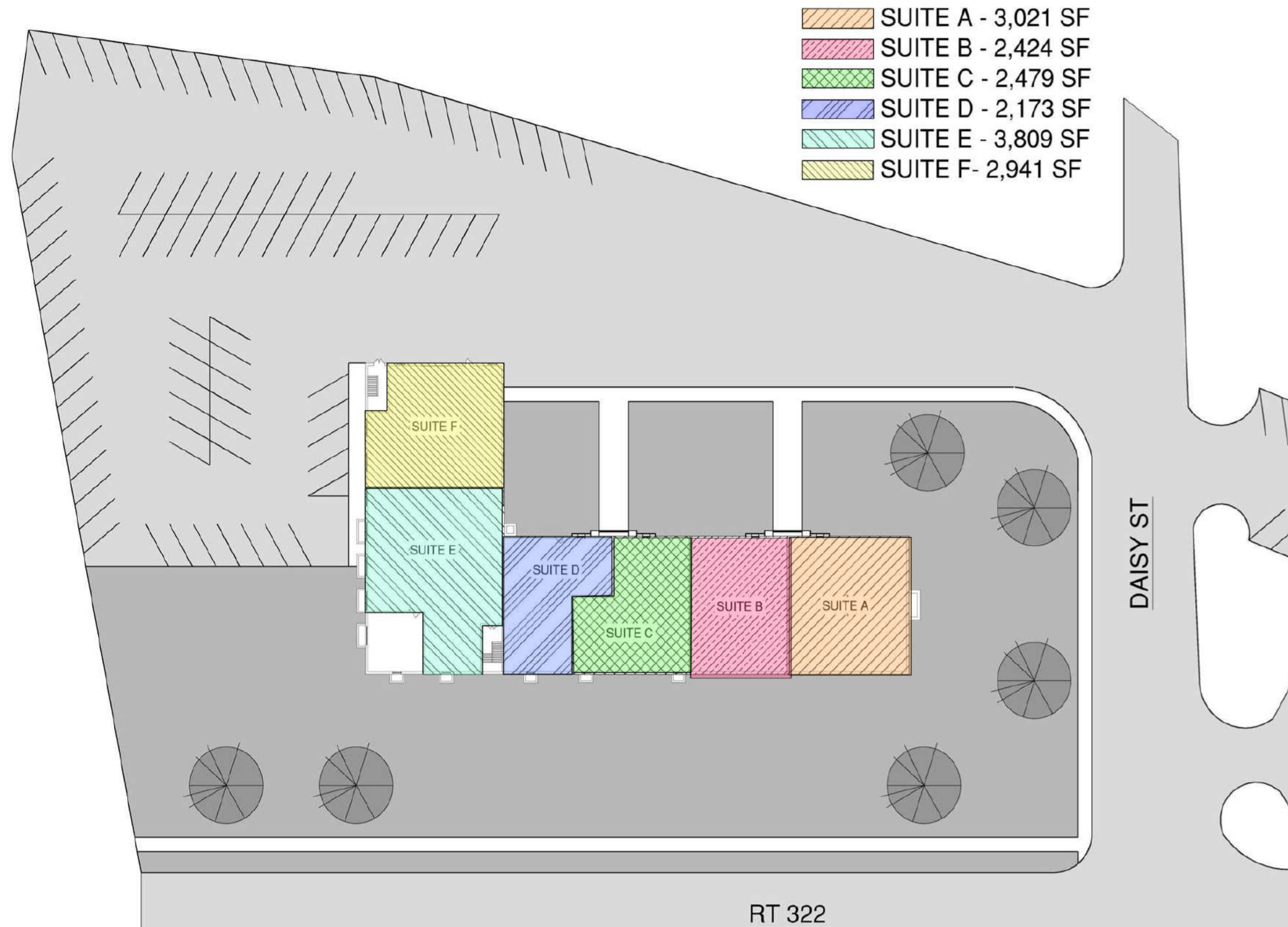
The Main Level will be made up of six suites, as shown to the left. Each suite is listed with it's separate square footage, but we are still in the construction and design phase of the project, so if your business requires additional square footage, we are open to negotiation.

We are very flexible with the buildout process. You have the option to bring in your own construction company to complete your buildout of the space, or we can do the buildout for you.

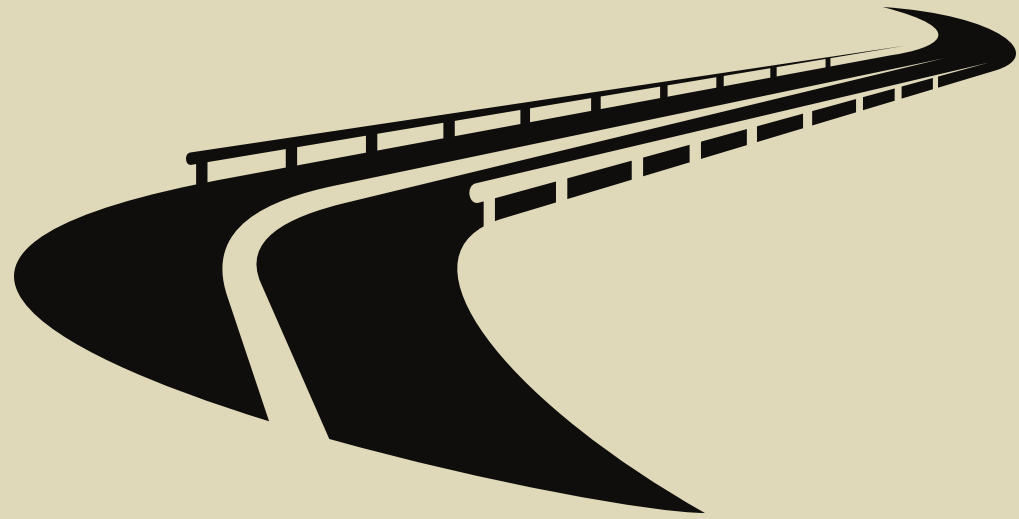
We offer a variety of leasing options that can also include the cost of your buildout to make it more affordable, if needed.

We are filling these spaces on a first come, first serve basis, so don't wait and call us today to reserve your new location!

CONTACT REBEKAH GRAHAM
(814) 553-7250



Access



Residential Communities



Schools



Join The Neighborhood

Restaurants



Neighboring Businesses

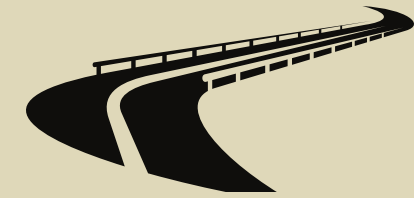


Demographics



JOIN THE NEIGHBORHOOD | THE DAISY PLACE

Join The Neighborhood



Easy access to State Route 322 and Interstate 80, bringing tons of traffic on a daily basis.



Located in front of multiple 55+ residential communities, apartments and assisted living homes, with direct access to residents and visiting families. These residents often have a limited ability to travel, making The Daisy Place their premier future shopping center.



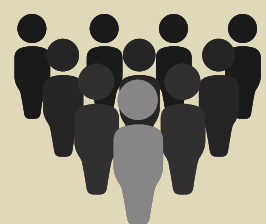
Located within 2 miles of Lock Haven University, Clearfield Campus, home to almost 400 commuting students and 30 full-time staff.



The Upper Level of The Daisy Place is designed to house multiple restaurants, driving a ton of traffic right to your back door.

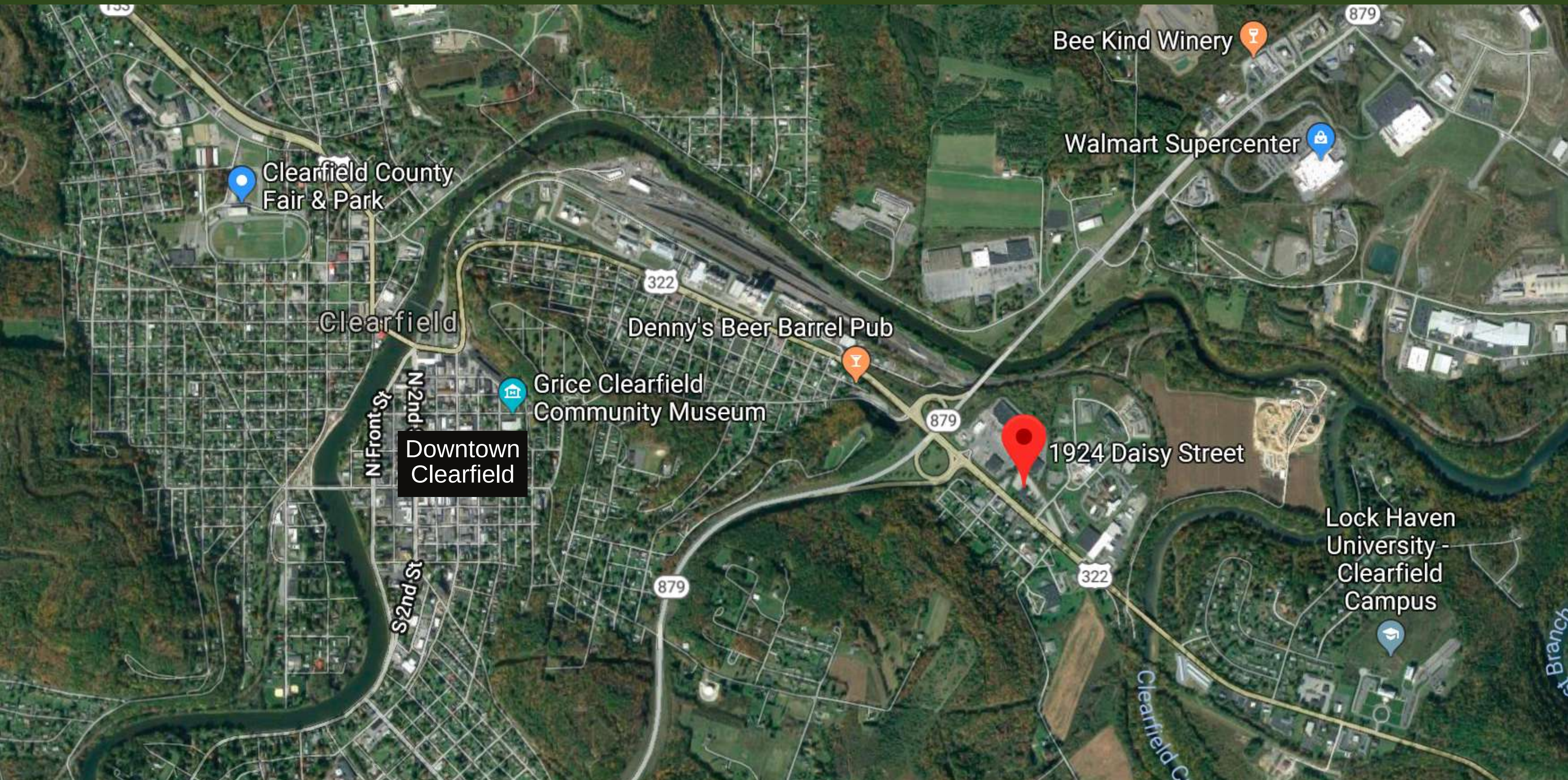


The idea for The Daisy Place is to become a new town staple with various businesses supporting each other and collectively drawing traffic.

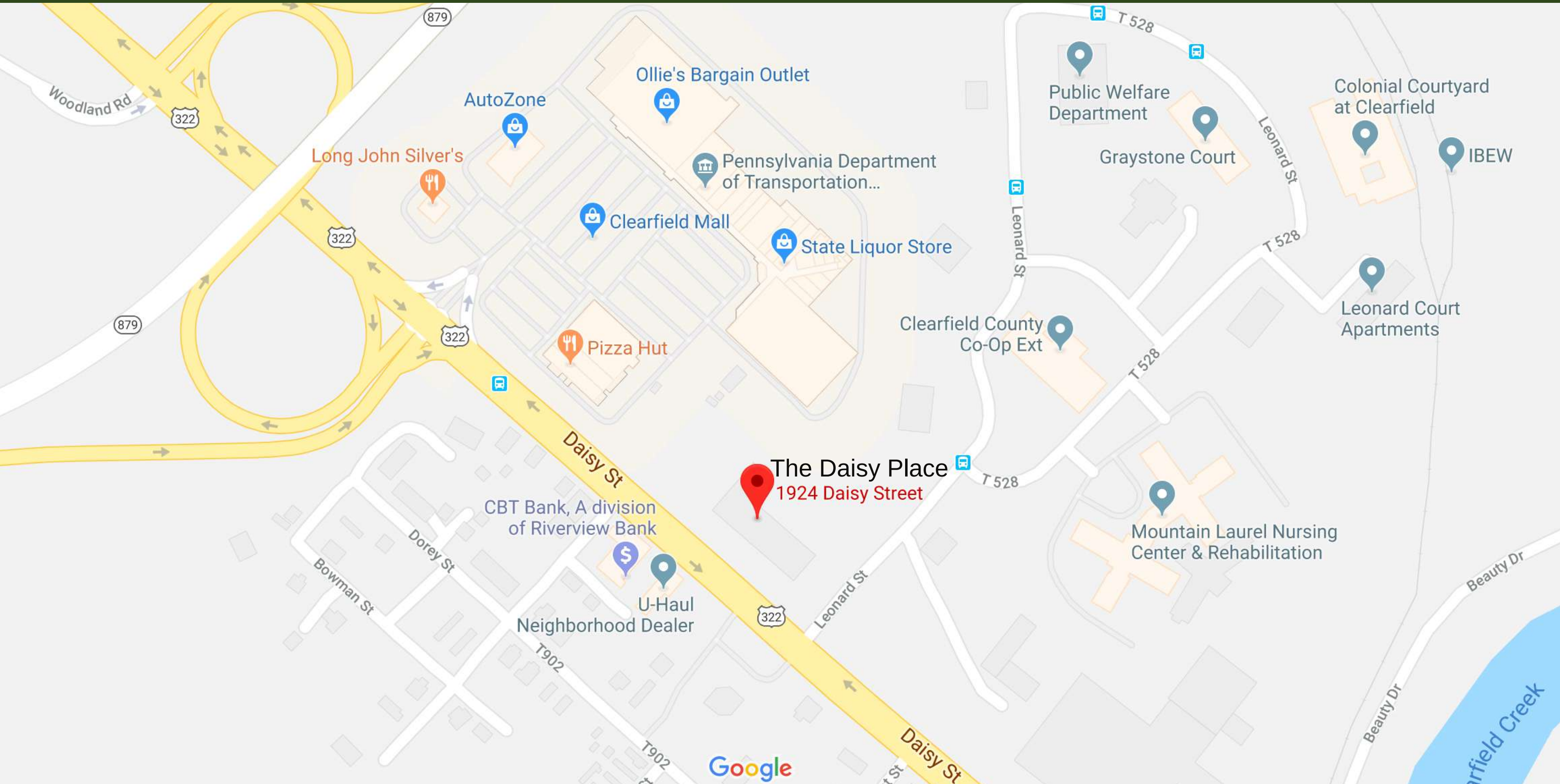


The Daisy Place is located in Clearfield, PA, with a population of almost 6,000 people, and a county population of about 80,000. Clearfield is also home to a variety of age groups, with the largest population between 18 and 65.

JOIN THE NEIGHBORHOOD | THE DAISY PLACE



AREA ATTRACTIONS | THE DAISY PLACE



AREA ATTRACTIONS | THE DAISY PLACE



Contact Us

We are current accepting applications for our commercial spaces and we would love to discuss your interest! Please contact us using the information below and we will be in touch shortly!

| | |
|---------------|--|
| CONTACT: | Rebekah Graham |
| Title: | Marketing Coordinator |
| Phone Number: | (814) 553-7250 |
| Email: | info@thedaisyplace.com |
| Website: | thedaisyplace.com |