

# THE TOWERS AT WESTSHORE

1408 AND 1410

N WESTSHORE BLVD

Tampa, FL 33607



## WESTSHORE BUSINESS DISTRICT

- + Three-five year term
- + Immediate occupancy
- + Negotiable asking rate
- + Covered parking at 4 per 1,000 SF
- + Less than 10 minutes to Tampa International Airport
- + Convenient to major malls, retail, hotels and restaurants



## CONTACT US

### PHILIP WEBER

First Vice President  
+1 813 273 8429  
philip.weber@cbre.com

FOR LEASE

# THE TOWERS AT WESTSHORE

1408 AND 1410

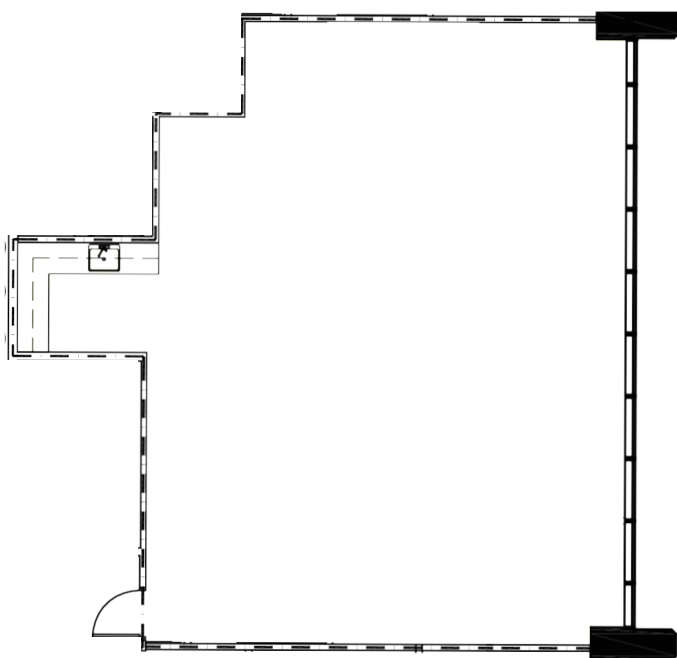
N WESTSHORE BLVD

Tampa, FL 33607



## TOWER II - 1408 N WESTSHORE BLVD

### SUITE 252 - 1,471



## CONTACT US

### PHILIP WEBER

First Vice President  
+1 813 273 8429  
philip.weber@cbre.com

