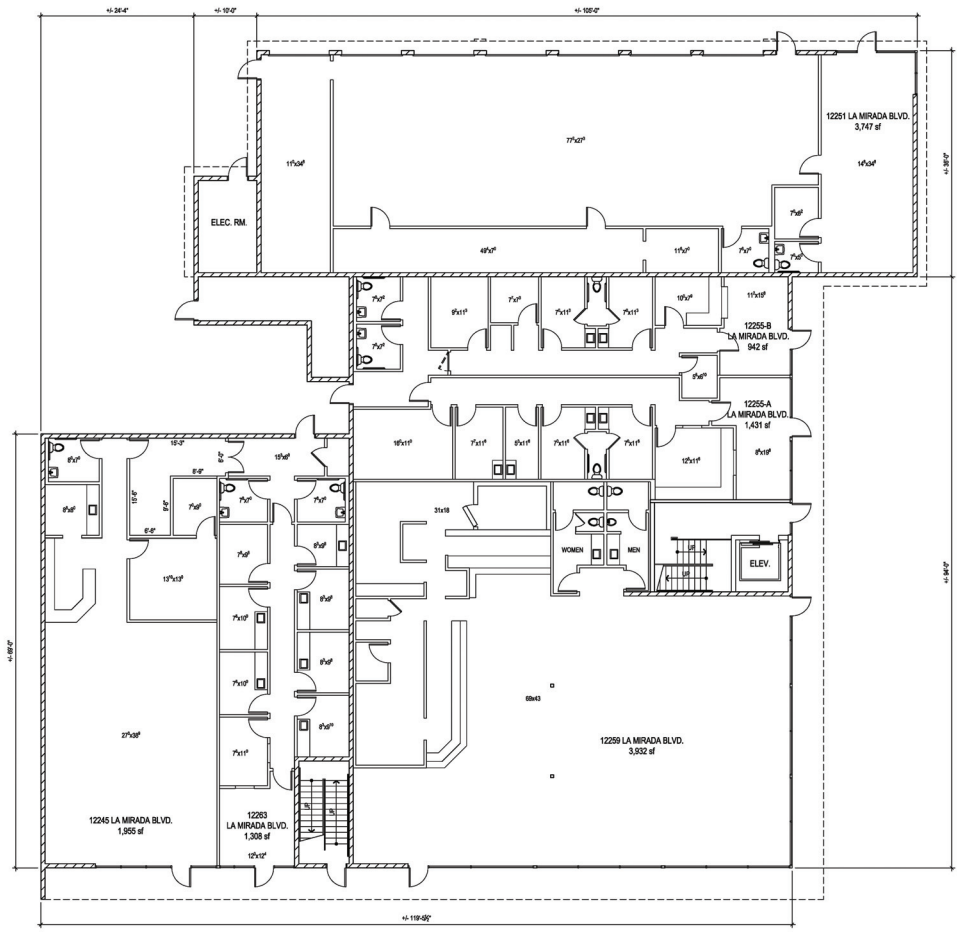




2ND FLOOR PLAN 1/8" = 1'-0" 2



NOTE: MEASURED PLANS WERE PRODUCED USING TAPE MEASURE AND HAND-HELD ELECTRONIC MEASURING DEVICE. ALL DIMENSIONS AND AREAS SHOULD BE CONSIDERED APPROXIMATE.

1ST FLOOR PLAN 1/8" = 1'-0" 1

RICH DEVELOPMENT
COMMERCIAL BUILDING
 N.W.C. OF IMPERIAL HWY / LA MIRADA BLVD
 LA MIRADA, CALIFORNIA

Chipman Architects
 John E. Chipman C19854
 1470 Jamboree Road
 Suite 200
 Newport Beach, CA 92660
 (949) 759-1492 Fax (949) 759-9381
 www.chipmanarchitects.com



This set of other project documents, set of blue, unshaded and design development sheets only, is intended for use as a project document set for the registered property of Chipman Architects, CA and cannot be held, used, or copied in part or in whole without the written consent of Chipman Architects, CA. This set of other project documents, set of blue, unshaded and design development sheets only, is intended for use as a project document set for the registered property of Chipman Architects, CA and cannot be held, used, or copied in part or in whole without the written consent of Chipman Architects, CA. This set of other project documents, set of blue, unshaded and design development sheets only, is intended for use as a project document set for the registered property of Chipman Architects, CA and cannot be held, used, or copied in part or in whole without the written consent of Chipman Architects, CA. This set of other project documents, set of blue, unshaded and design development sheets only, is intended for use as a project document set for the registered property of Chipman Architects, CA and cannot be held, used, or copied in part or in whole without the written consent of Chipman Architects, CA.

REVISION	DESCRIPTION	DATE	REVISION	DESCRIPTION	DATE

SHEET TITLE:
"MEASURED" FLOOR PLANS

JOB NAME: LA MIRADA
 JOB NO.: 0862
 DATE: 06/20/08
 DRAWN BY: MWN
 CHECKED BY: JEC
 SHEET NO.:

A-1