

FOR LEASE

± 5,375 Sq. Ft. Wholesale Showroom

Presented by

**Ashwill
Associates**

COMMERCIAL REAL ESTATE

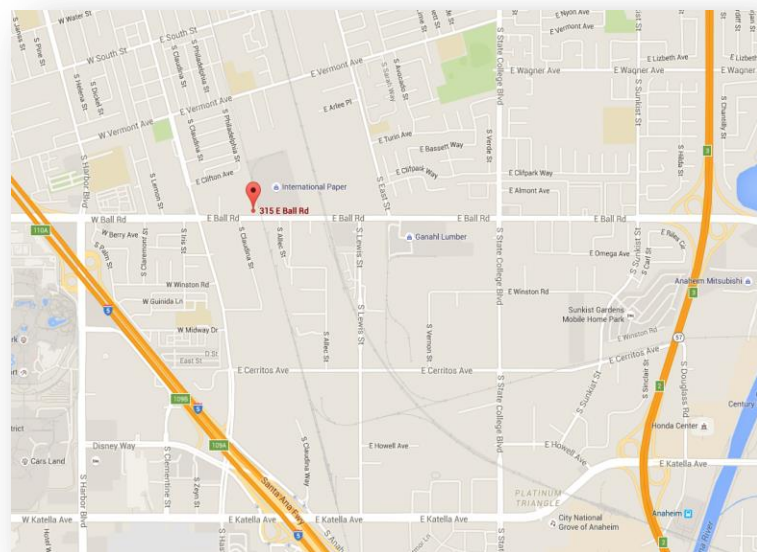
www.ashwillassociates.com



315 E. Ball Rd., Anaheim, CA

PROPERTY FEATURES

- Prime Showroom Space in Tile Mile Vicinity
- Excellent Parking and Access
- Ten (10) Parking Spaces
- Ball Road Street Frontage
- Convenient Access to 5, 57 and 22 Freeways



24 Hour Recorded Property
Information
Call (888) 200-4411
Ext. 3972

For more info, contact:

CAMERON JONES

Senior Vice President

Direct: 714-240-7078

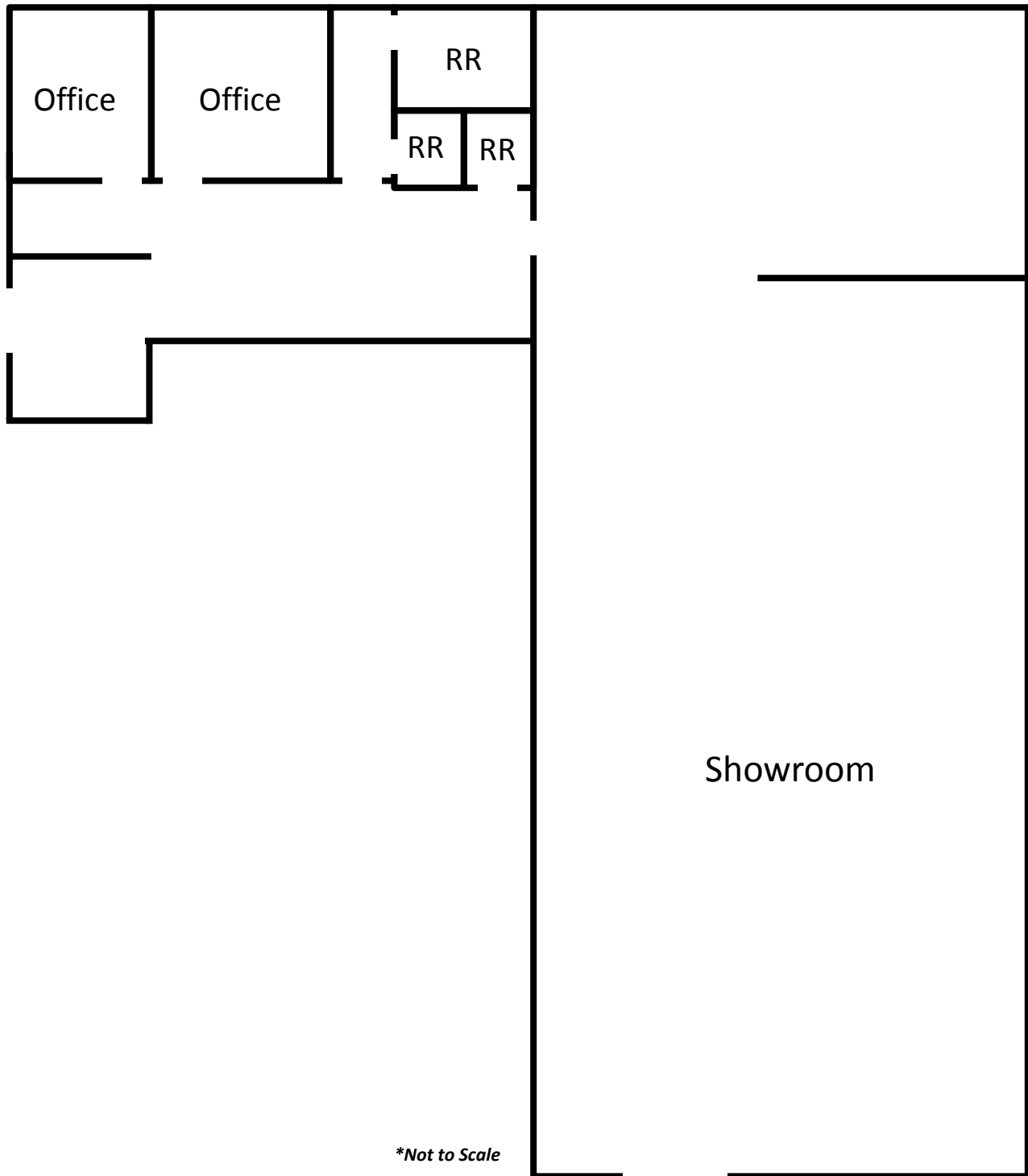
Office: 714-456-0500

cameron@ashwillassociates.com

DRE LIC# 01770608

The information contained herein has not been verified by real estate brokers. Although we have no reason to doubt its accuracy, we do not guarantee it. Buyers and tenants should verify information independently.

Local Knowledge • Real Opportunities • Industrial • Office • Land



**Not to Scale*

**Ashwill
Associates**
COMMERCIAL REAL ESTATE

The information contained herein has not been verified by real estate brokers. Although we have no reason to doubt its accuracy, we do not guarantee it. Buyers and tenants should verify information independently.

For more info, contact:

CAMERON JONES

Senior Vice President

Direct: 714-240-7078

Office: 714-456-0500

cameron@ashwillassociates.com

DRE LIC# 01770608