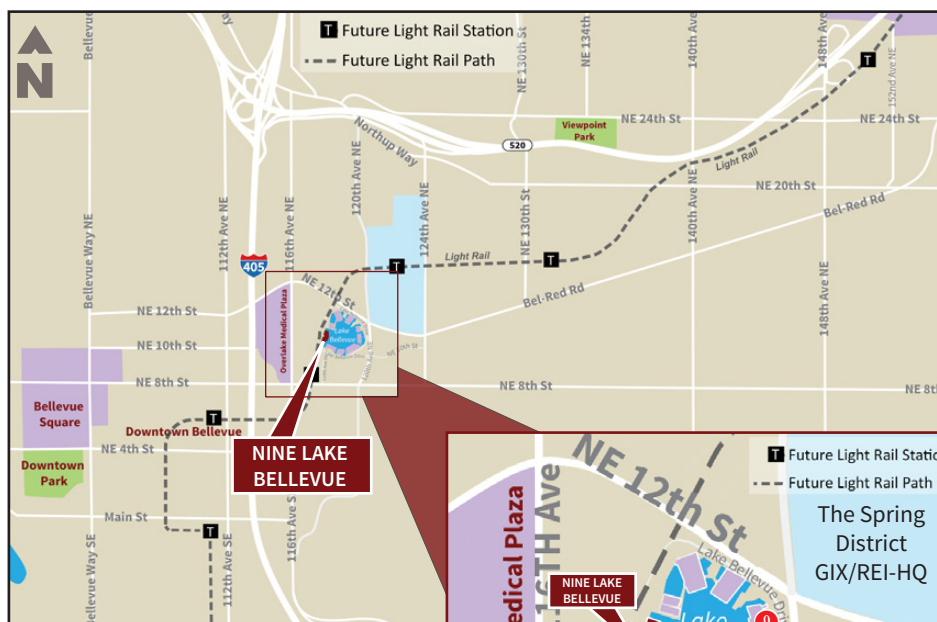




# Nine Lake Bellevue

9 Lake Bellevue Drive | Bellevue, WA 98005

**OFFICE FOR LEASE**  
**FURNISHED OFFICE SPACE**  
*With Water View!*



**NINE LAKE  
BELLEVUE**

## NEARBY RESTAURANT & RETAIL AMENITIES

- |                   |                  |
|-------------------|------------------|
| 1 WHOLE FOODS     | 6 TACO DEL MAR   |
| 2 PUMPHOUSE GRILL | 7 STARBUCKS      |
| 3 CHICK-FIL-A     | 8 I LOVE SUSHI   |
| 4 BURGER KING     | 9 THE CRAB POT   |
| 5 BARTELL DRUGS   | 10 120TH ST DELI |



**Available Immediately:**  
**Suite 210 | 2,337 RSF**

**Lease Rate:**  
**\$33.50/RSF, Full Service**

**Parking:**  
**4.0/1,000 RSF - FREE**  
 ■ 2 Reserved Parking Stalls - Free

**Suite Features:**

- Furniture & Equipment Available
- ADT Security Installed
- Installed Key Reader Entry Access System

**Building Features:**

- Close to Downtown Bellevue and Overlake/Group Health Hospital Campus
- Restaurant and Retail Amenities with Walking Distance
- Easy Access to I-405, I-90 and SR-520
- Building Elevator
- Close to Future Light Rail Station
- **Comcast** Available  
 BUSINESS CLASS



**Dan Krekel, CCIM**  
 dkrekel@leibsohn.com | (425) 586-4655



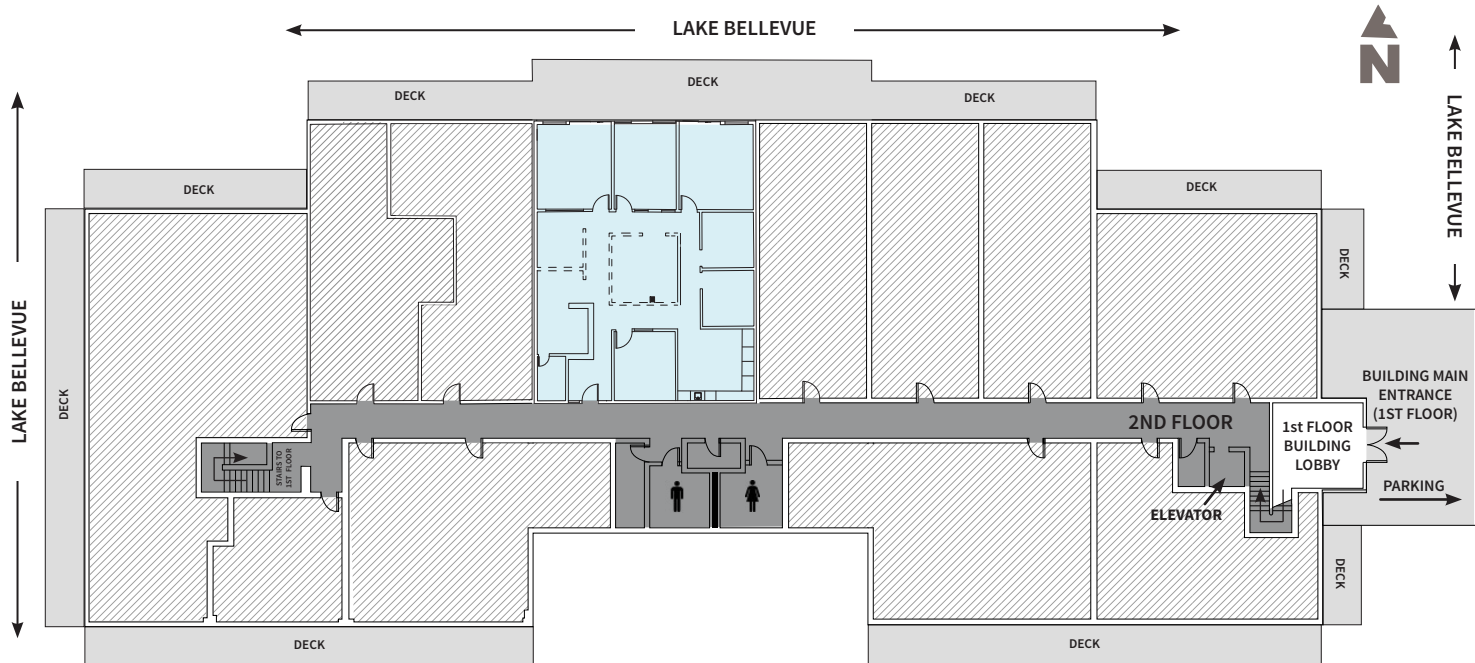
# Nine Lake Bellevue

9 Lake Bellevue Drive | Bellevue, WA 98005

**OFFICE SPACE FOR LEASE**

*Private/Peaceful Setting*

**SUITE 210: 2,337 RSF**

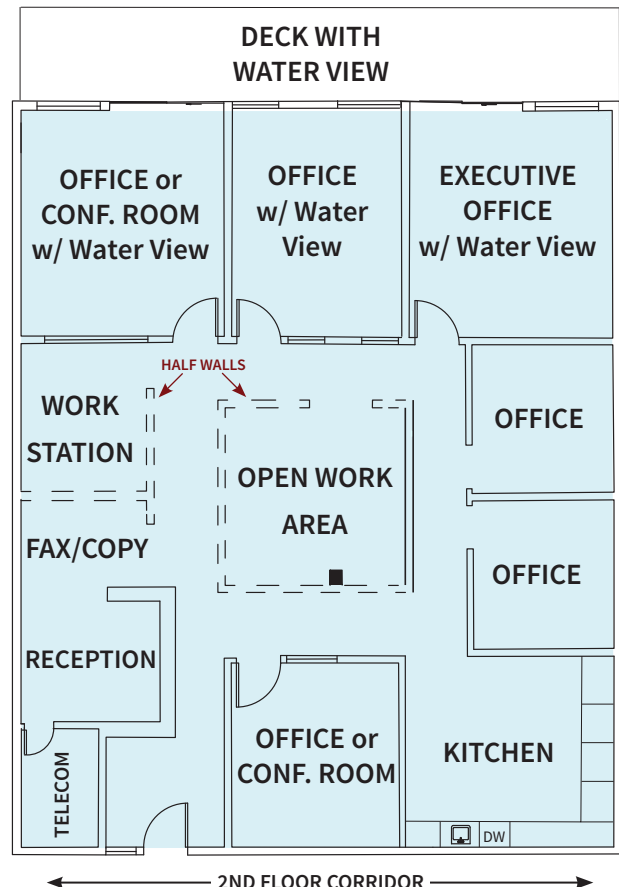


**AVAILABLE IMMEDIATELY:**

**SUITE 210 | 2,337 RSF**

**\$33.50/RSF, Full Service**

**FURNITURE & EQUIPMENT  
AVAILABLE!**



**Leibsohn & Company**  
Commercial Real Estate Services

**Dan Krekel, CCIM**  
dkrekel@leibsohn.com | (425) 586-4655



The information contained herein has been received from sources we deem reliable. While we have no reason to doubt its accuracy, we do not guarantee it. You are advised to independently verify all information.