

Everett Mall Plaza

RETAIL FOR LEASE

1201 - 1425 SE Everett Mall Way, Everett WA 98208



THE OPPORTUNITY

Prime Walmart, Michael's and Pier 1 Imports center located directly across the street from the Everett Mall, which was acquired in the Fall 2017. New mall owner, Brixton Capital, "...is very excited about the growth in the area and the long term sustainability of Everett Mall."* Everett Mall Plaza and the Everett Mall straddle Everett Mall Way with an average daily traffic count of over 40,000 VPD. Easy, multi-point access, pylon signage and a line-up of strong, synergistic co-tenants. Unique opportunity to join an established retail area with stable, diverse retailers, service providers and restaurants. Call today for more information on options, including combining or demising spaces!



Tiffini Connell

(206) 283-5212

www.wccommercialrealty.com



DISCLAIMER: The above information has been secured from sources believed to be reliable, however, no representations are made to its accuracy. Prospective tenants or buyers should consult their professional advisors and conduct their own independent investigation. Site plan and configuration are subject to change. Properties are subject to change in price and/or availability without notice. West Coast Commercial Realty, LLC

WCCR

West Coast Commercial Realty

Retail
Commercial
Specialists

Everett Mall Plaza

RETAIL FOR LEASE

1201 - 1425 SE Everett Mall Way, Everett WA 98208



Highly visible location directly across from Everett Mall

EVERETT
MALL

- REGAL CINEMAS
- TJ-MAXX
- Burlington
- SEARS
- BED BATH & BEYOND
- PET SMART
- BEST BUY
- LA FITNESS
- ULTA BEAUTY
- OLD NAVY
- Party City
- Olive Garden
- FAMOUS footwear
- BUFFALO WILD WINGS GRILL & BAR
- VICTORIA'S SECRET
- Payless SHOESOURCE
- KAY JEWELERS

Everett Mall Plaza

Walmart

Michael's

Jack in the Box

Pier 1 Imports

MATTRESS depot.usa

petco

Red Robin

Tiffini Connell

(206) 283-5212

www.wccommercialrealty.com

WCCR

West Coast Commercial Realty

Retail
Commercial
Specialists



DISCLAIMER: The above information has been secured from sources believed to be reliable, however, no representations are made to its accuracy. Prospective tenants or buyers should consult their professional advisors and conduct their own independent investigation. Site plan and configuration are subject to change. Properties are subject to change in price and/or availability without notice. West Coast Commercial Realty, LLC

Everett Mall Plaza

RETAIL FOR LEASE

1201 - 1425 SE Everett Mall Way, Everett WA 98208



DEMOGRAPHICS

TOTAL POPULATION

1-Mile: 16,536
3-Mile: 120,241
5-Mile: 249,791

TOTAL DAYTIME EMPLOYEES

1-Mile: 12,688
3-Mile: 42,054
5-Mile: 98,281

AVERAGE HOUSEHOLD INCOME

1-Mile: \$72,789
3-Mile: \$79,005
5-Mile: \$97,238

POPULATION MEDIAN AGE

1-Mile: 34.1
3-Mile: 34.1
5-Mile: 36.0

Tiffini Connell

(206) 283-5212

www.wccommercialrealty.com



DISCLAIMER: The above information has been secured from sources believed to be reliable, however, no representations are made to its accuracy. Prospective tenants or buyers should consult their professional advisors and conduct their own independent investigation. Site plan and configuration are subject to change. Properties are subject to change in price and/or availability without notice. West Coast Commercial Realty, LLC

WCCR

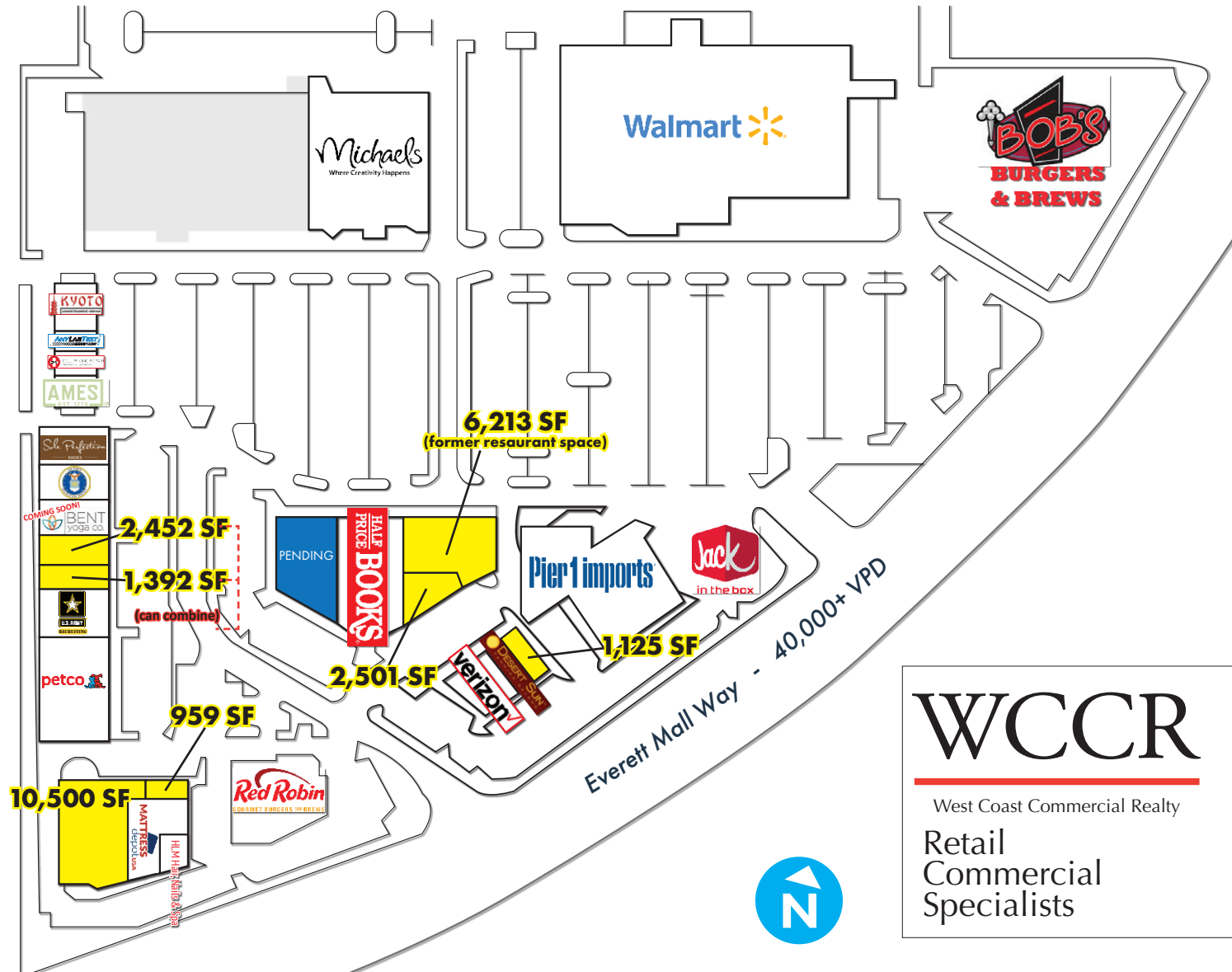
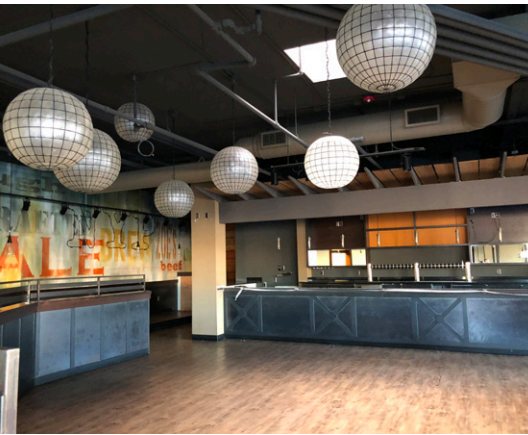
West Coast Commercial Realty

Retail
Commercial
Specialists

Everett Mall Plaza

RETAIL FOR LEASE

1201 - 1425 SE Everett Mall Way, Everett WA 98208



WCCR

West Coast Commercial Realty

Retail
Commercial
Specialists



Located on the highly visible, lighted intersection of Everett Mall Way directly across from Everett Mall