

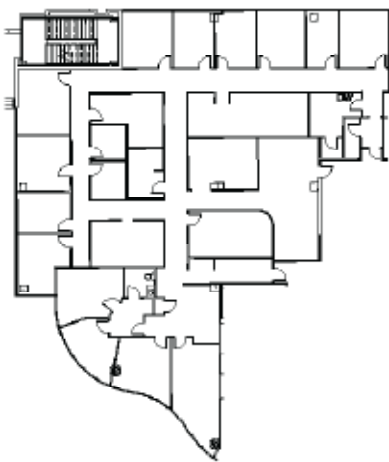
LENOX OVERLOOK

3391 Peachtree Road, Atlanta, Georgia 30326

BUCKHEAD LOCATION. BOUTIQUE ADVANTAGE.



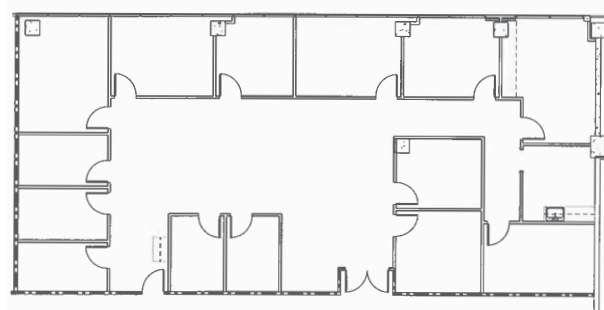
FEATURED SUITES:



SUITE 110
8,902 RSF



SUITE 290
1,632 RSF



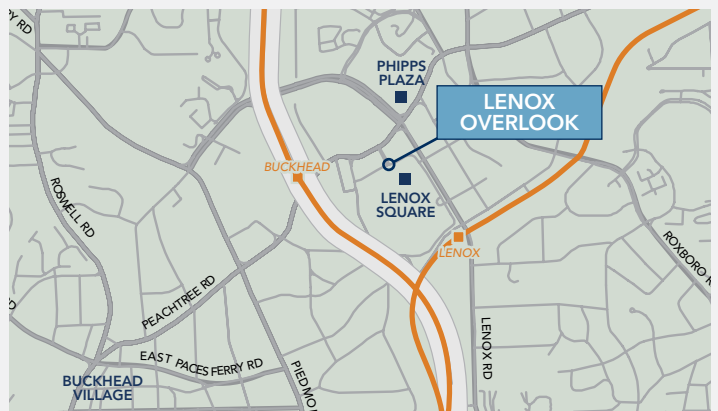
SUITE 450
3,560 RSF

PROPERTY HIGHLIGHTS

- Class A office building in the heart of Buckhead business district
- Floor-to-ceiling windows
- Parking Ratio 2.5 per 1,000 SF
- 4-story office building
- Best market value available- \$26.50/SF Full-Service
- Unmatched amenities, including exclusive tenant privileges available at the Westin Buckhead Atlanta, The Palm Restaurant, fitness center, conference facilities, on-site catering and 24-hour security
- Unique Peachtree Street monument signage opportunity available for tenants off all sizes

CONVENIENT BUCKHEAD LOCATION

- Excellent visibility along Peachtree Road
- Abundant neighborhood amenities are available at Lenox Square and Phipps Plaza
- Quick Access to Lenox Road and Georgia 400 and I-85
- Hartsfield-Jackson Atlanta International Airport is a 25 minute drive and a 16 minute Marta ride



[Click to View Property in Google Maps](#)



LEASING INFORMATION

Don Reeves, CCIM

[\(404\) 842-6606](tel:4048426606)

don.reeves@transwestern.com



T 404.842.6600 | F 404.842.6601 | 3340 Peachtree Road NE, Suite 1000 | Atlanta, GA 30326 | www.transwestern.com/atlanta

The information provided herein was obtained from sources believed reliable; however, Transwestern makes no guarantees, warranties or representations as to the completeness or accuracy thereof. The presentation of this property is submitted subject to errors, omissions, change of price or conditions, prior sale or lease, or withdrawal without notice. Copyright © 2016 Transwestern.