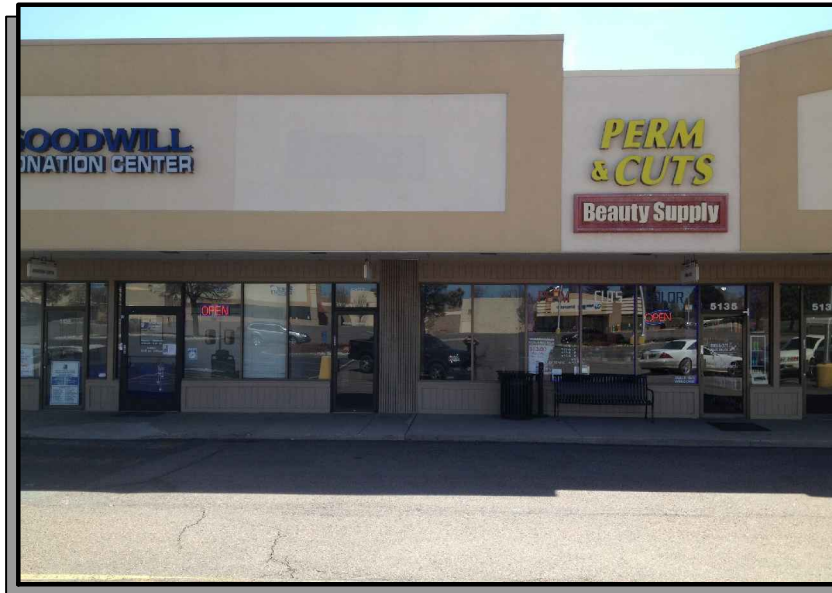
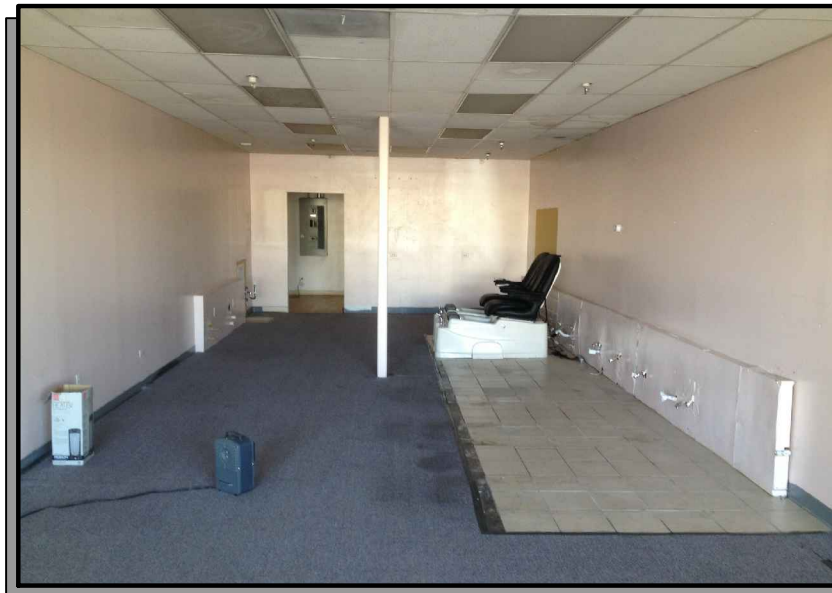


1,000 RSF

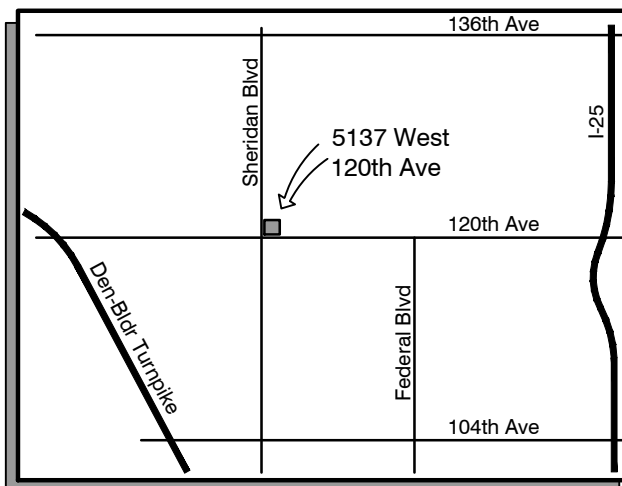
RTU

ELECTRICAL PANEL



## 5137 WEST 120th AVENUE BROOMFIELD, COLORADO

SUITE AREA	1,000 S.F.
FRONTAGE	±16'-0"
CEILING HEIGHT	10'-0"
CLEAR HEIGHT (APPROX.)	±15'-0"
FIRE SPRINKLERS	YES
ELECTRICAL SERVICE	225A @ 120/208V, 3Ø
HVAC UNITS	(1) @ 3 TONS
WATER LINE SIZE	1" (VERIFY)
SEWER LINE SIZE	4" (VERIFY)
GAS AVAILABLE	YES
LIGHTING	2x4 FLUORESCENT
NO. OF TOILET ROOMS	(1)
ADA COMPLIANT	
TOILET ROOM	NO
FRONT ENTRANCE	YES
REAR ENTRANCE	YES



## LEASING INFORMATION



**NEWMARK MERRILL**  
MOUNTAIN STATES

630 15th Avenue, Suite 100  
Longmont, Colorado 80501

T: 970.377.3230  
www.newmarkmerrill.com

DISCLAIMER- The drawing contained herein is for general information purposes only. Any and all features, matters and other information depicted hereon or contained herein are for illustrative marketing purposes only, are subject to modification without notice, are not intended to be relied upon by any party and are not intended to constitute representations and warranties as to the size and nature of improvements to be constructed (or that any improvements will be constructed) or as to the identity or nature of any occupants thereof. ALL INFORMATION CONTAINED HEREIN IS FOR INTERNAL PURPOSES ONLY.