

FOR LEASE



WILSONVILLE MEDICAL PLAZA

29345 SW TOWN CENTER LOOP E | WILSONVILLE, OR 97070

SITE SPECS & INFORMATION

- » Established Medical Office Building
- » Approximately 1,660 RSF on 2nd Floor
- » Building adjacent to retail and restaurants
- » Close proximity to I-5
- » Lease Rate \$30/SF/YR NNN
- » Tenant Improvement Allowance of \$40.00/SF
- » High quality construction throughout Building
- » Generous lobby and common areas
- » Vanilla Shell

CONTACT US

CAPACITY COMMERCIAL GROUP

805 SW Broadway, Suite 700 | Portland, OR 97205

P. 503.326.9000

E. info@capacitycommercial.com

JEFF FALCONER, SIOR

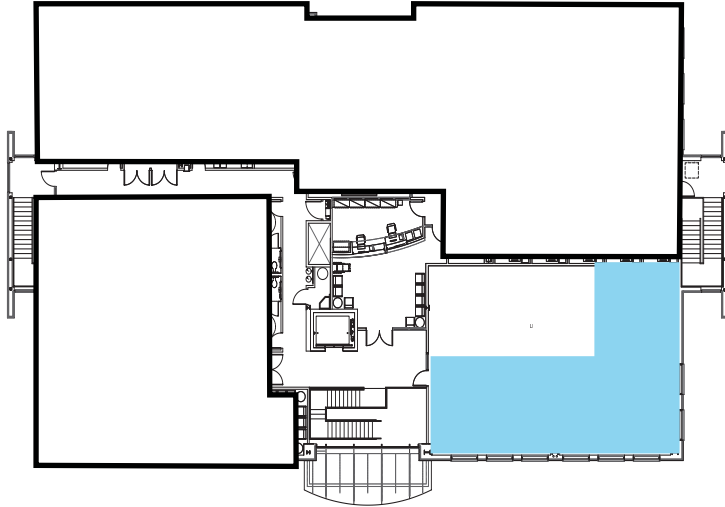
Principal

P. 503.542.4346

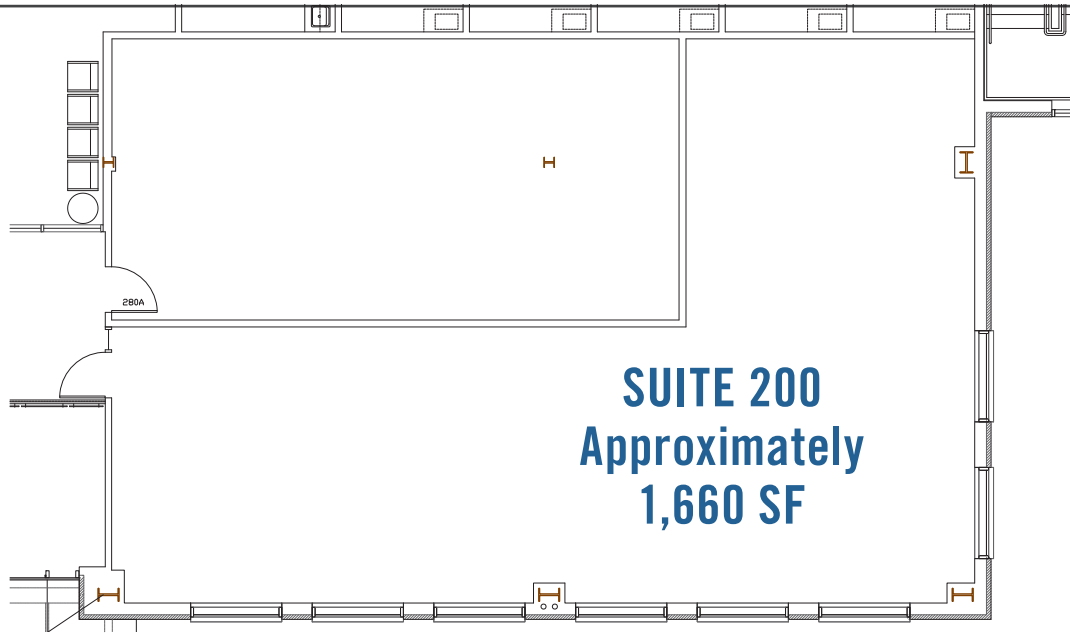
E. jeff@capacitycommercial.com

— Proud member of: —
CORFAC
International

The information contained herein is believed to be accurate but is not warranted as to its accuracy and may change or be updated without notice. Seller or Landlord makes no representation as to the environmental condition of the property and recommends purchaser's or tenant's independent investigation.



LOCATION ON 2ND FLOOR



SUITE 200
Approximately
1,660 SF

CONTACT US

CAPACITY COMMERCIAL GROUP

805 SW Broadway, Suite 700 | Portland, OR 97205

P. 503.326.9000

E. info@capacitycommercial.com

JEFF FALCONER, SIOR

Principal

P. 503.542.4346

E. jeff@capacitycommercial.com