

STATION PARK

BUILDING J SUBLEASE

ONE OF UTAH'S FINEST TRANSIT-ORIENTED DEVELOPMENT PROJECTS



172 EAST PROMONTORY - SUITE 275
FARMINGTON UTAH



BUILDING J SUBLEASE



172 EAST PROMONTORY - SUITE 275 FARMINGTON, UT

BUILDING J SUBLEASE DETAILS

- 3,301 rentable square feet
- Sublease Exp. Oct 1, 2021
- \$25.00/PSF
- Furniture is negotiable
- Beautiful finishes
- Floor to ceiling glass throughout the interior of space
- Located across from the gym (*Lyft at Station Park*)



A WORLD CLASS DEVELOPMENT

Located midway between Salt Lake City and Layton at the intersection of Interstate 15, Highway 89, the new Legacy Parkway, and UTA's FrontRunner commuter train, the 1,000,000 square foot development has become one of the region's leading shopping and dining destinations.

The meticulous landscaping, children's play area and stylish market-hall pavilions have all been created by the world's most renowned designers and architects. Station Park is arguably one of the most impressive projects of its kind being built today.

Station Park is a true community gathering place, where families and friends can connect while offering visitors a charming, upscale shopping experience with the highest quality retailers. Setting a new standard of excellence in Utah, this legacy development includes nearly 200,000 square feet of Class A office space, Hyatt Place, many restaurants, a one-of-a-kind grocery store, a Cinemark Theater, and a wide array of locally-owned boutiques as well as familiar, name-brand stores (Apple, Victoria Secret, Nordstrom Rack, H&M, etc.).



JORDAN M. WALL
jordan.wall@cbcadvisors.com

BRANDON D. FUGAL
brandon.fugal@cbcadvisors.com

GREG GUNN, SIOR
greg.gunn@cbcadvisors.com



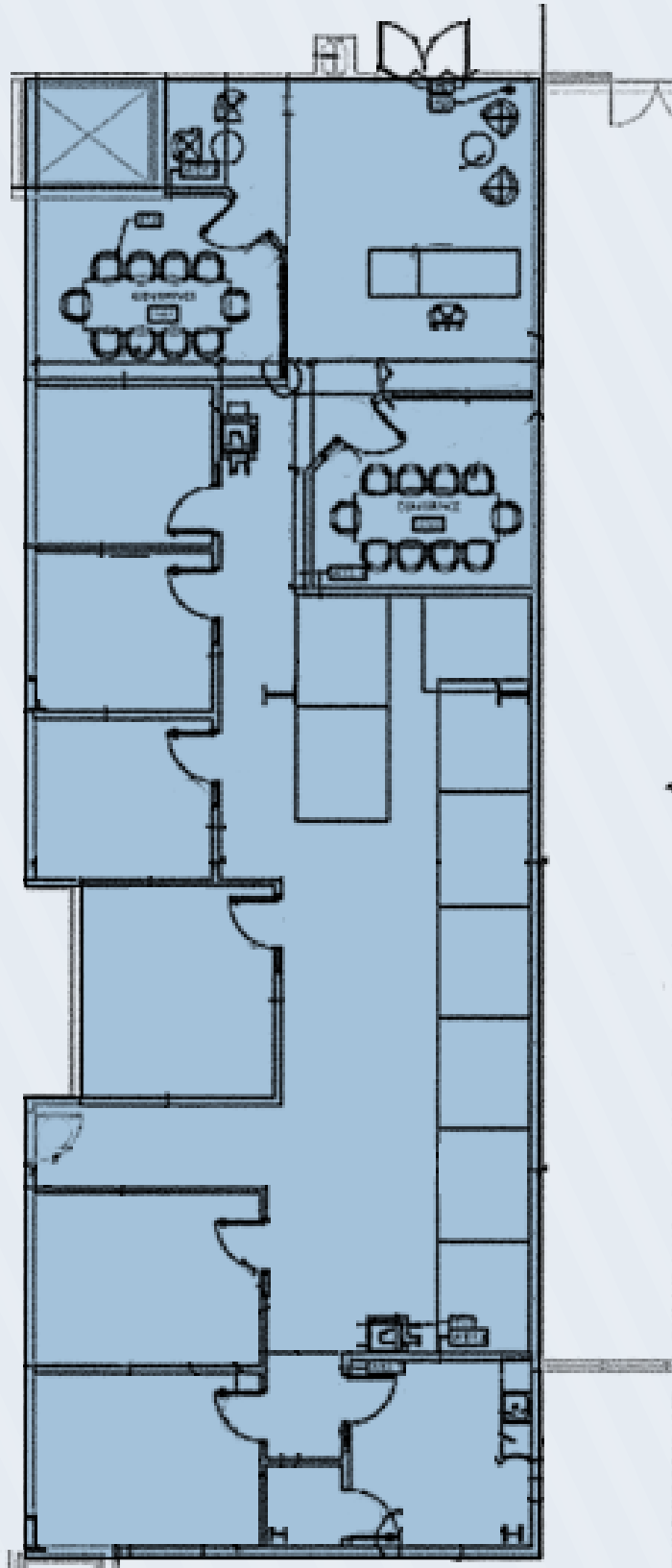
801.947.8300 | 6550 South Millrock Drive, Suite 200 | Salt Lake City, Utah 84121 | www.cbcadvisors.com

BUILDING J SUBLEASE



172 EAST PROMONTORY - SUITE 275 FARMINGTON, UT

**BUILDING J
2ND FLOOR**



JORDAN M. WALL
jordan.wall@cbcadvisors.com

BRANDON D. FUGAL
brandon.fugal@cbcadvisors.com

GREG GUNN, SIOR
greg.gunn@cbcadvisors.com

801.947.8300 | 6550 South Millrock Drive, Suite 200 | Salt Lake City, Utah 84121 | www.cbcadvisors.com



BUILDING J SUBLEASE INTERIOR PHOTOS



172 EAST PROMONTORY - SUITE 275 FARMINGTON, UT



JORDAN M. WALL
jordan.wall@cbcadvisors.com

BRANDON D. FUGAL
brandon.fugal@cbcadvisors.com

GREG GUNN, SIOR
greg.gunn@cbcadvisors.com

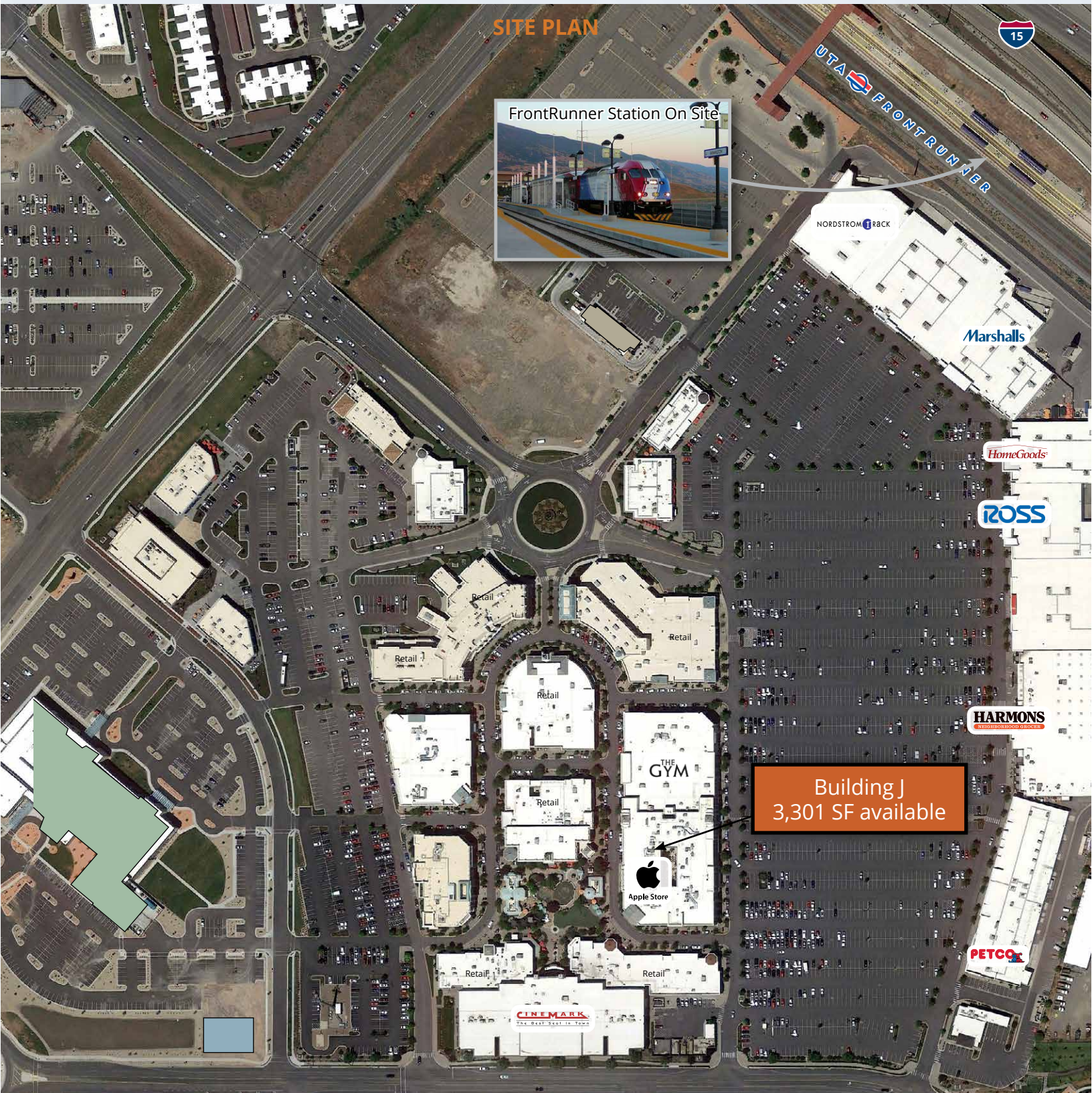


801.947.8300 | 6550 South Millrock Drive, Suite 200 | Salt Lake City, Utah 84121 | www.cbcadvisors.com

BUILDING J SUBLEASE



172 EAST PROMONTORY - SUITE 275 FARMINGTON, UT



SITE PLAN



Building J
3,301 SF available



JORDAN M. WALL
jordan.wall@cbcadvisors.com

BRANDON D. FUGAL
brandon.fugal@cbcadvisors.com

GREG GUNN, SIOR
greg.gunn@cbcadvisors.com



801.947.8300 | 6550 South Millrock Drive, Suite 200 | Salt Lake City, Utah 84121 | www.cbcadvisors.com