

FOR LEASE

TRC CENTER II 236 CLEARFIELD AVENUE

VIRGINIA BEACH, VA 23462



TRC Center II is a Class A Flex building located in Central Virginia Beach just 1/2 mile from the I-264 and Witchduck Road interchange. It is part of a 4 building office/flex complex that is professionally owned and managed by the Runnymede Corporation.



PROPERTY HIGHLIGHTS

- + Space Available: Suite 205:: \pm 4,000 - 18,076 SF
- + Building Size: \pm 36,947 SF
- + Close proximity to the Virginia Beach Town Center and retail amenities
- + Parking: 5.0 spaces/1,000 SF
- + Loading: Grade level overhead
- + Zoning: B2
- + Operating Expenses: \$3.15/SF (includes CAM, RE Taxes, and Insurance)
- + Base Rent: \$11.95/SF, NNN



CONTACT US

DONALD R. CRIGGER

Executive Vice President
+1 757 228 1831
don.crigger@cbre-norfolk.com

RICKY ANDERSON

Senior Vice President
+1 757 217 1892
ricky.anderson@cbre-norfolk.com

www.cbre.us/norfolk

CBRE | Hampton Roads

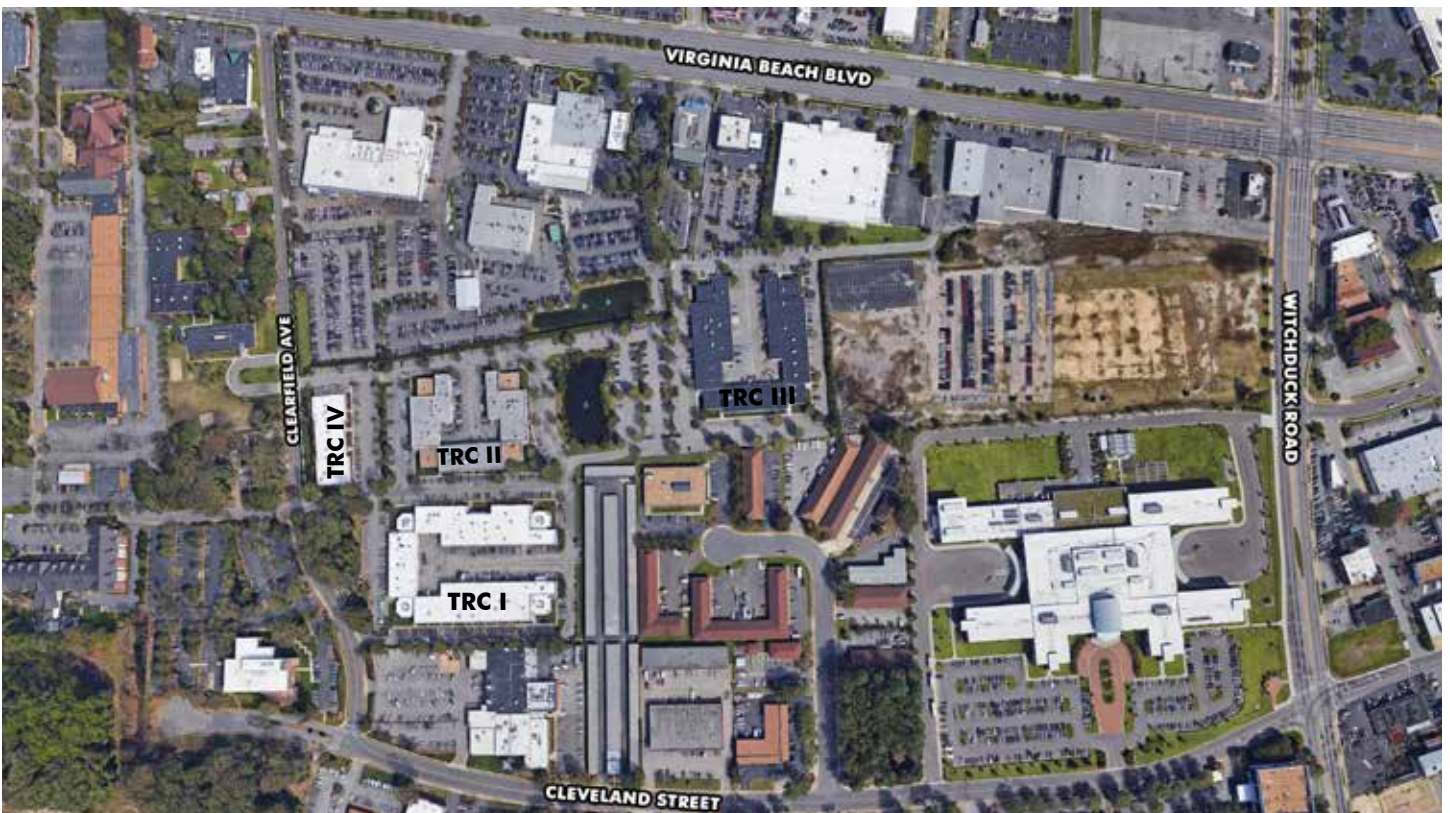
Part of the CBRE affiliate network

FOR LEASE
TRC CENTER II

236
CLEARFIELD AVENUE
Virginia Beach, VA 23462



AERIAL PLANS



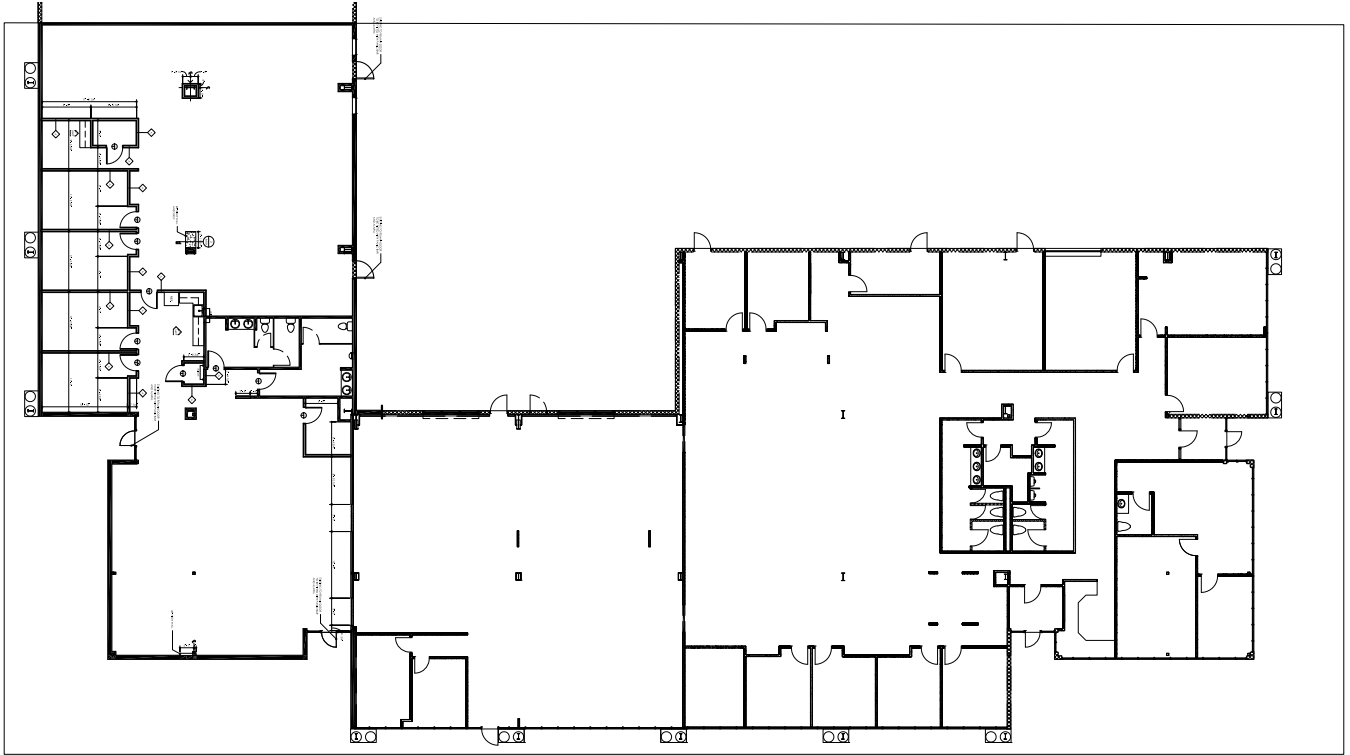
FOR LEASE TRC CENTER II

236
CLEARFIELD AVENUE
Virginia Beach, VA 23462



FLOOR PLAN

+ Suite 205: ±4,000 SF up to ±18,076



FOR LEASE
TRC CENTER II

236
CLEARFIELD AVENUE
Virginia Beach, VA 23462



© 2018 CB Richard Ellis of Virginia, Inc. All rights reserved. This information has been obtained from sources believed reliable, but has not been verified for accuracy or completeness. You should conduct a careful, independent investigation of the property and verify all information. Any reliance on this information is solely at your own risk. CBRE and the CBRE logo are service marks of CBRE, Inc., and CB Richard Ellis of Virginia, Inc. All other marks displayed on this document are the property of their respective owners.

www.cbre.us/norfolk

CBRE | Hampton Roads
Part of the CBRE affiliate network