

# 12,600 SF\* INDUSTRIAL BUILDING FOR SALE

## OFF INTERSTATE 10 - MARIJUANA CULTIVATION AREA



**Offered at \$2,500,000**  
**19160 McLane Street**  
**PALM SPRINGS, CALIFORNIA**

**Do Not Show Without Appointment**



**PROPERTY DETAILS:**

- \*12,600 SF (Owner has estimates to develop second story. Installation to be completed after escrow closes.)\*
- Current Size is 6,300 SF with 1,000 SF Mezzanine
- Zoned Manufacturing (M-2) - Palm Springs
- Clear Height: 30' - (3) Grade Level Doors
- A/C May Be Added
- APN: 666-392-004 (Lot 10)
- Parking Spaces: 22 Including 1 Handicap
- Lot Size: 0.46 Acres (20,056 SF) - 110'x182.33'
- Streets are Fully Improved and Utilities in Place (Sewer to be Reviewed)
- Existing Power may be Expanded to 1,200 to 3,000 AMPS

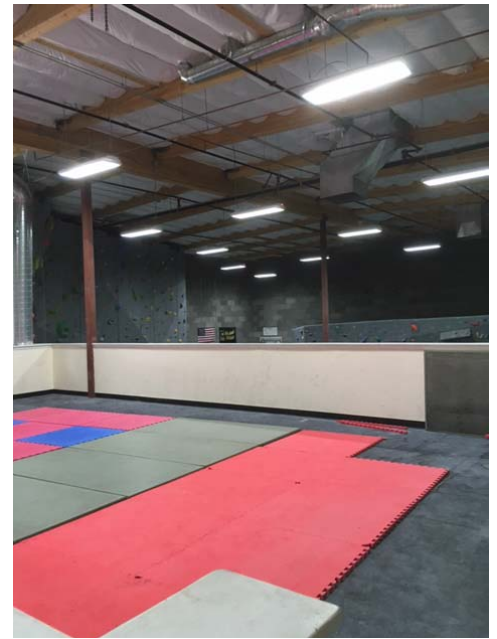
For More Information, Please Contact:  
**MERVYN E. KIRSHNER**  
**760-408-9814**  
 mkirshner@dc.rr.com  
 CalBRE License: 00254315



NO WARRANTY OR REPRESENTATION IS MADE TO THE ACCURACY OF THE FOREGOING INFORMATION. TERMS OF SALE OR LEASE AND AVAILABILITY ARE SUBJECT TO CHANGE OR WITHDRAWAL WITHOUT NOTICE.

# 12,600 SF\* INDUSTRIAL BUILDING FOR SALE

## OFF INTERSTATE 10 - MARIJUANA CULTIVATION AREA



PHOTOS

For More Information, Please Contact:

**MERVYN E. KIRSHNER**

**760-408-9814**

[mkirshner@dc.rr.com](mailto:mkirshner@dc.rr.com)

CalBRE License: 00254315

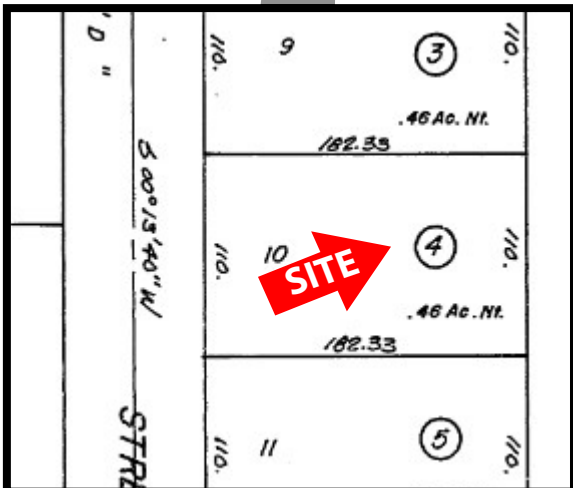
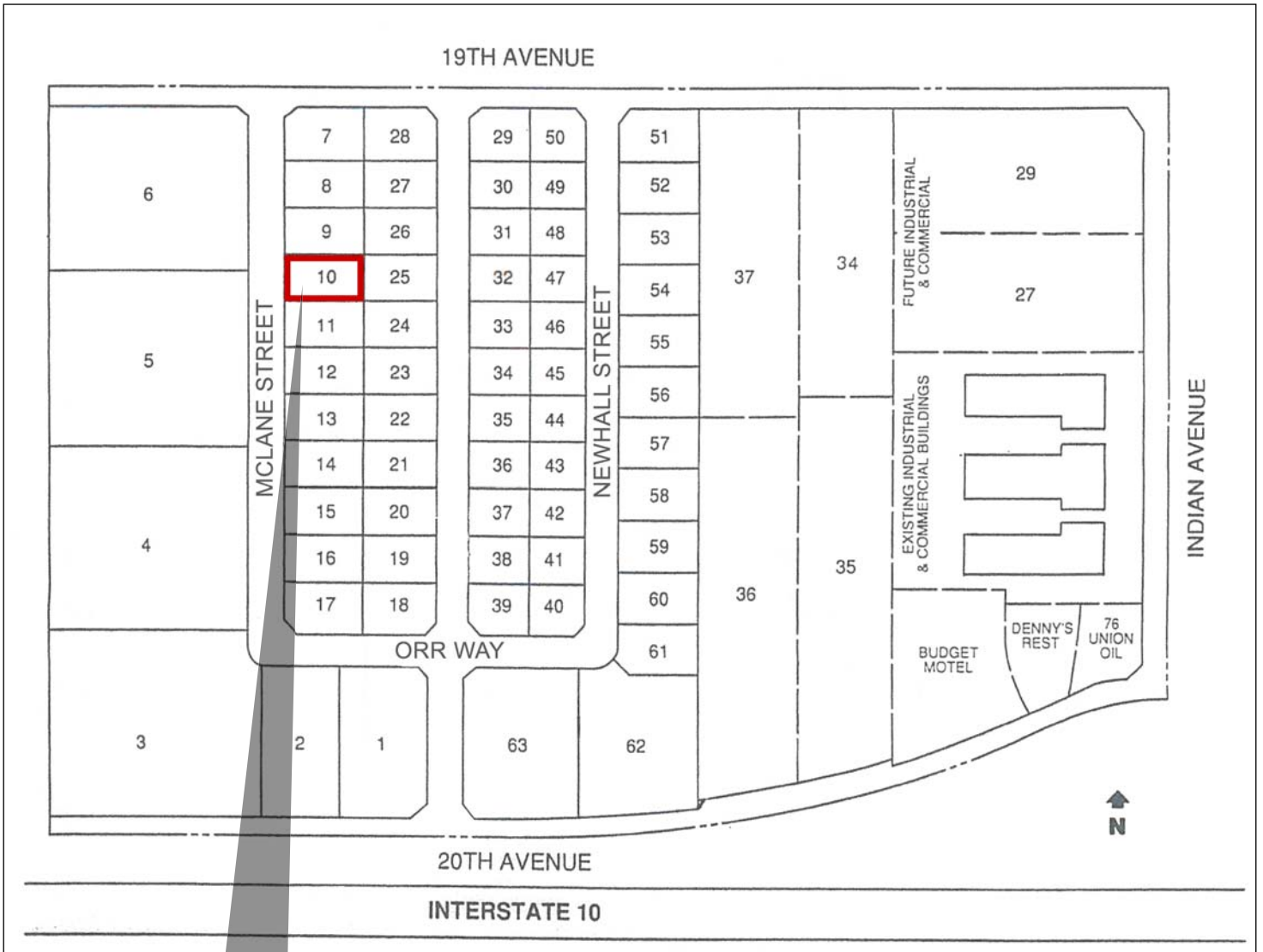
COMMERCIAL



NO WARRANTY OR REPRESENTATION IS MADE TO THE ACCURACY OF THE FOREGOING INFORMATION. TERMS OF SALE OR LEASE AND AVAILABILITY ARE SUBJECT TO CHANGE OR WITHDRAWAL WITHOUT NOTICE.

# 12,600 SF\* INDUSTRIAL BUILDING FOR SALE

## OFF INTERSTATE 10 - MARIJUANA CULTIVATION AREA



### SITE PLAN

For More Information, Please Contact:

**MERVYN E. KIRSHNER**

**760-408-9814**

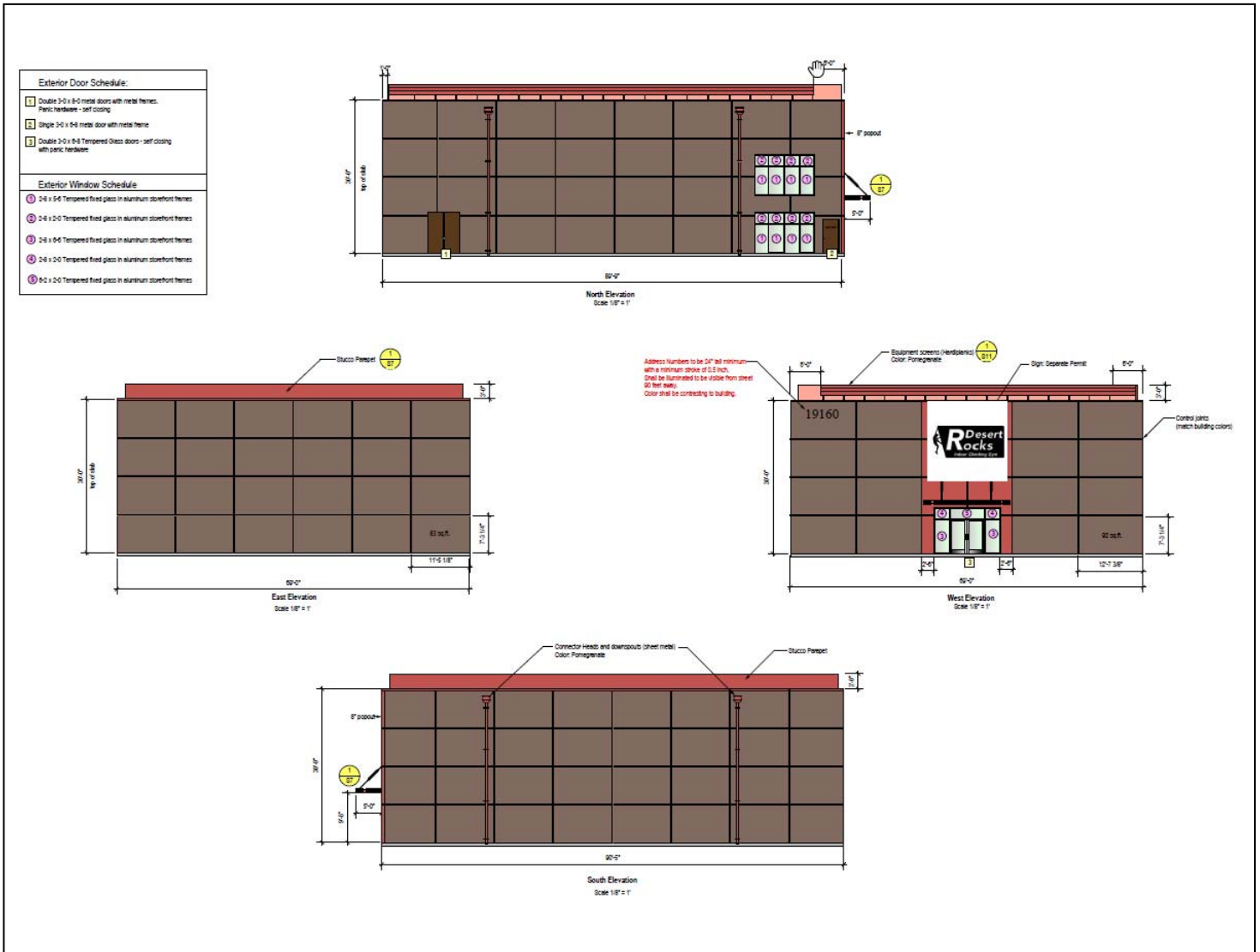
[mkirshner@dc.rr.com](mailto:mkirshner@dc.rr.com)

CalBRE License: 00254315



# 12,600 SF\* INDUSTRIAL BUILDING FOR SALE

## OFF INTERSTATE 10 - MARIJUANA CULTIVATION AREA



## ELEVATION

For More Information, Please Contact:

MERVYN E. KIRSHNER

760-408-9814

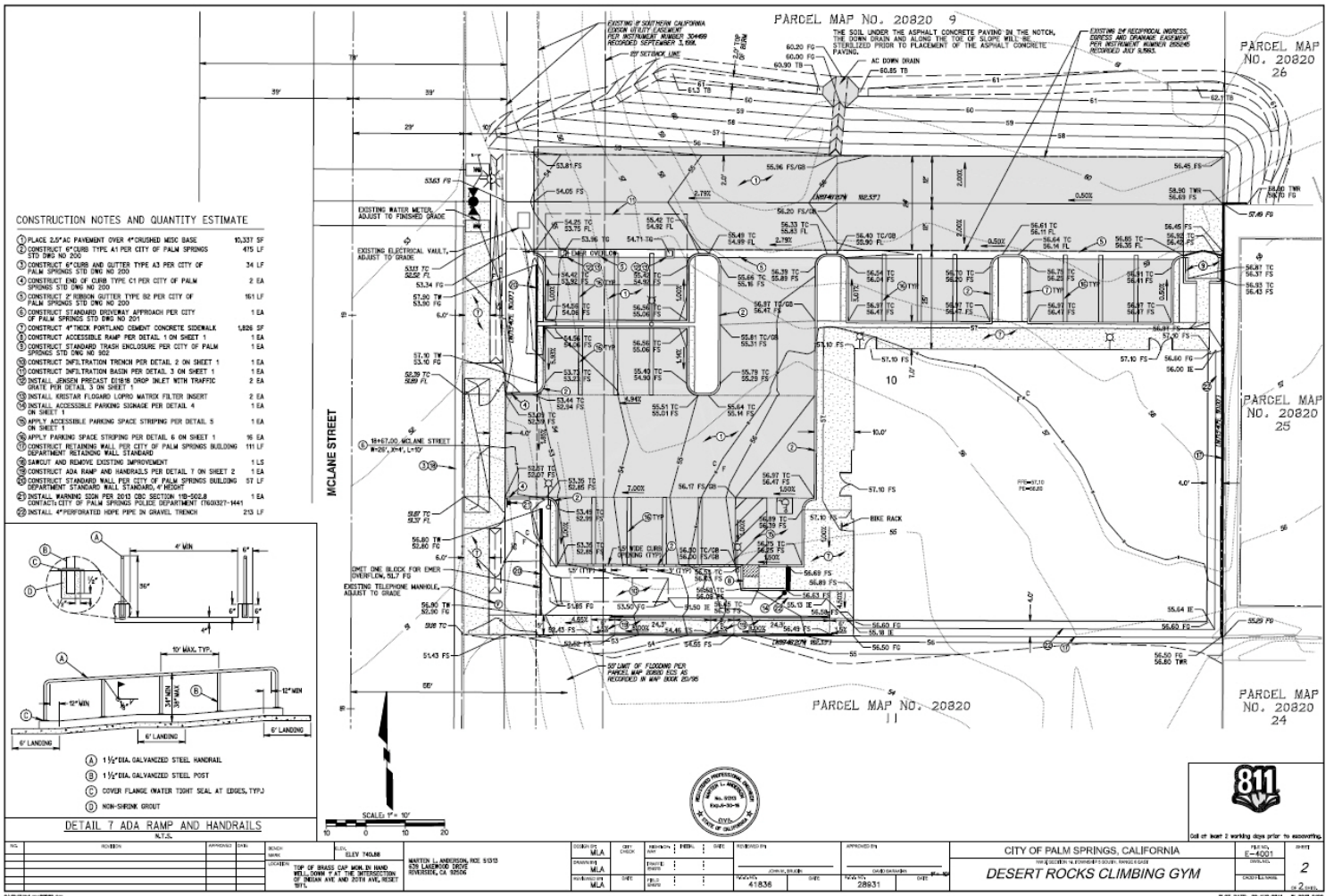
mkirshner@dc.rr.com

CalBRE License: 00254315



# 12,600 SF\* INDUSTRIAL BUILDING FOR SALE

## OFF INTERSTATE 10 - MARIJUANA CULTIVATION AREA



# GRADING PLAN

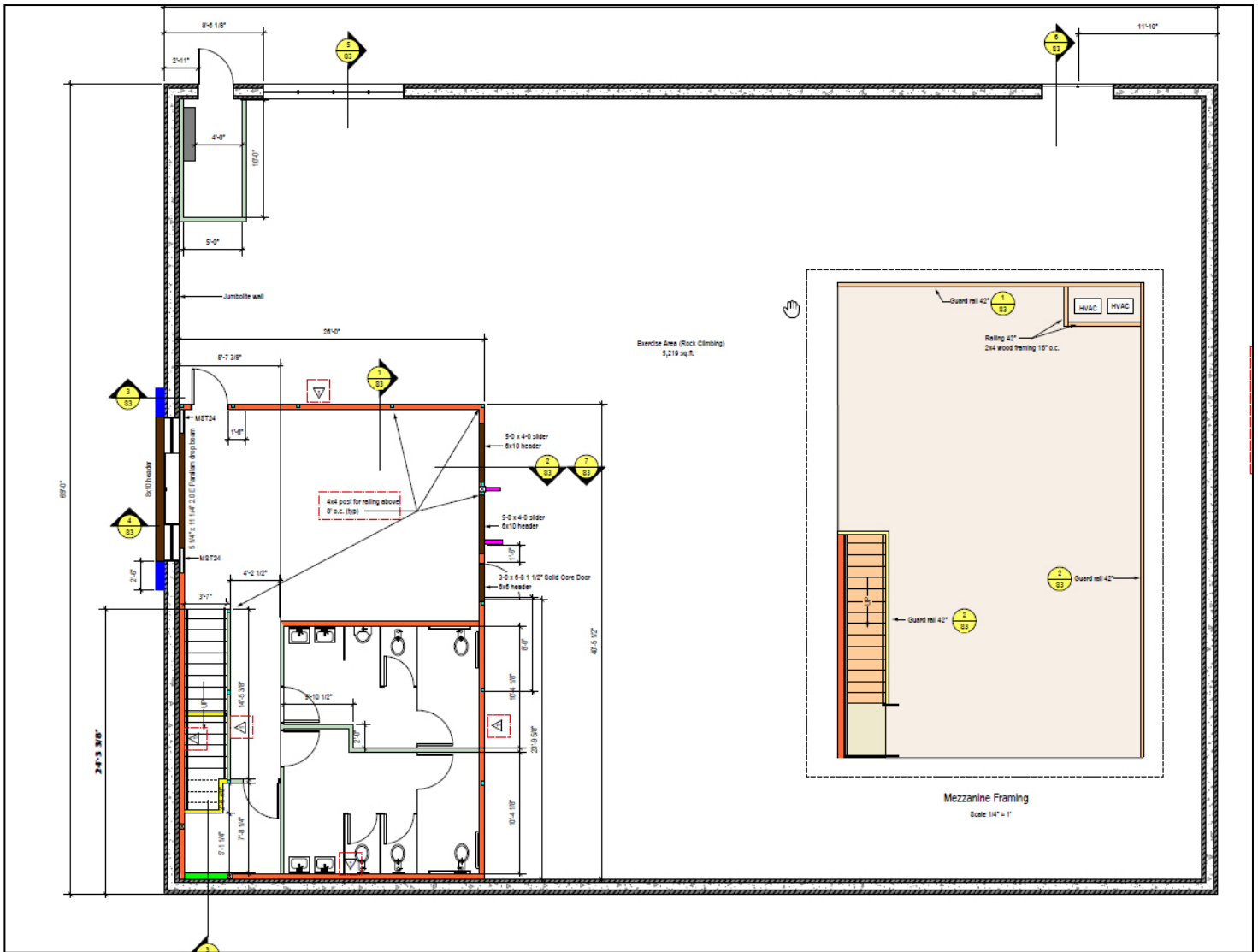
For More Information, Please Contact:  
**MERVYN E. KIRSHNER**  
**760-408-9814**  
 mkirshner@dc.rr.com  
 CalBRE License: 00254315



NO WARRANTY OR REPRESENTATION IS MADE TO THE ACCURACY OF THE FOREGOING INFORMATION. TERMS OF SALE OR LEASE AND AVAILABILITY ARE SUBJECT TO CHANGE OR WITHDRAWAL WITHOUT NOTICE.

# 12,600 SF\* INDUSTRIAL BUILDING FOR SALE

## OFF INTERSTATE 10 - MARIJUANA CULTIVATION AREA



### ELEVATION

For More Information, Please Contact:

**MERVYN E. KIRSHNER**

**760-408-9814**

[mkirshner@dc.rr.com](mailto:mkirshner@dc.rr.com)

CalBRE License: 00254315

