



NWC Loop 410 & New Valley Hi Pad Site Available

P.J. Pfeiffer
Ext. 204
ppfeiffer@birnbaumproperty.com

Joe Aycock
Ext. 208
jaycock@birnbaumproperty.com

200 Concord Plaza
Suite 860
San Antonio, TX
78216

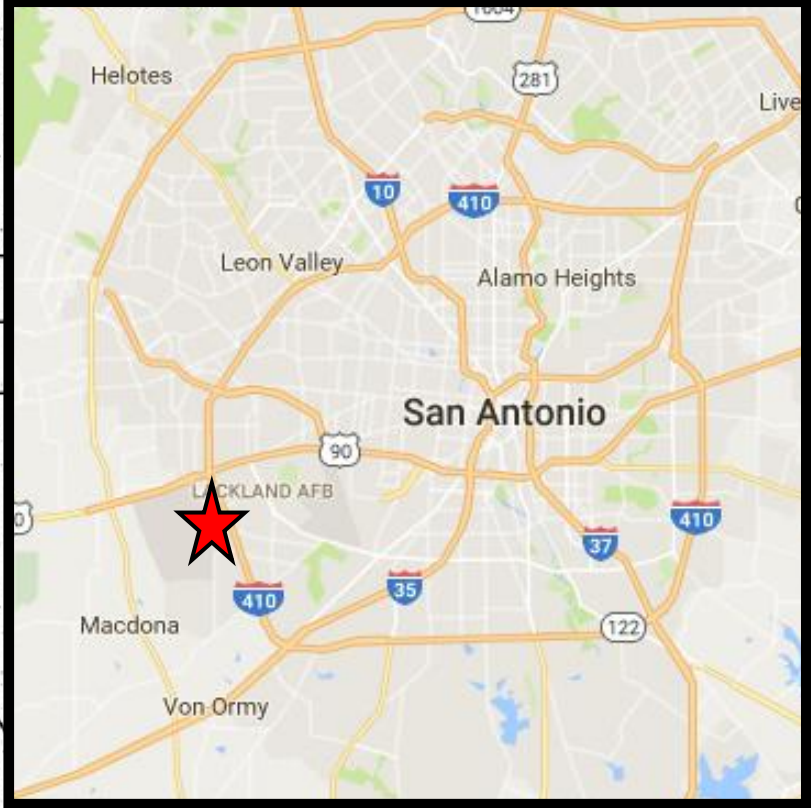
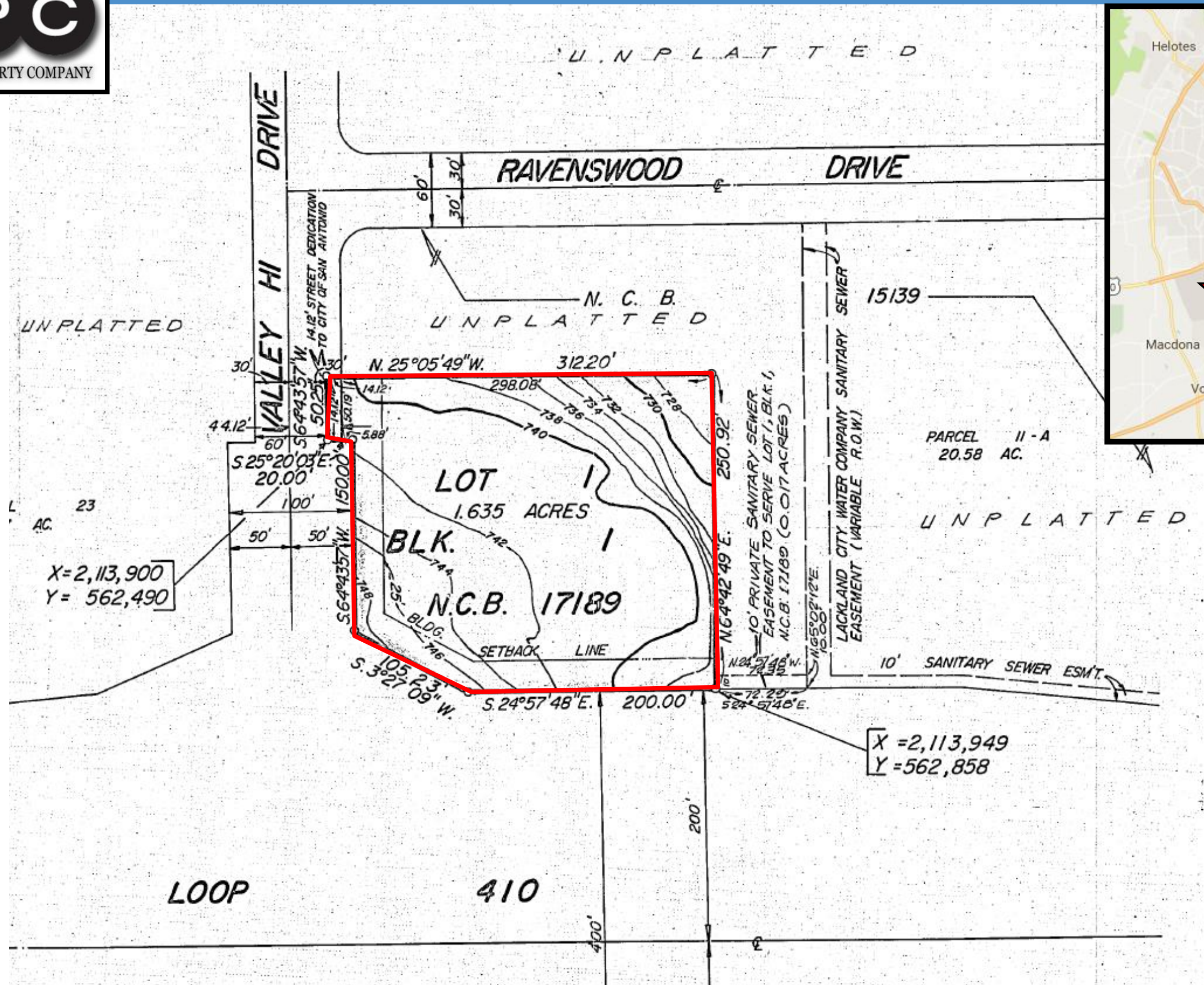
Main:
(210) 349-7711

Fax:
(210) 349-7710



PROPERTY INFORMATION

Location:	Located at the NWC of Loop 410 & New Valley Hi and across Loop 410 from the 97,000 SF H-E-B Grocery Store		
Property Description:	Pad Site (NWC)		
Available Space:	1.635 Acre Pad Site		
Price Per SF:	Call broker for details		
Traffic Counts: TXDOT 2014	Loop 410 & Valley Hi Drive = 20,744 VPD Loop 410 = 83,000 VPD		
Demographics 2016 Estimates	1 mile	3 mile	5 mile
Population	7,033	53,105	187,930
Households	2,662	17,377	61,193
Avg HH Income	\$100,726	\$89,846	\$86,099
Median Age	32.1	31.1	32.6



X=2,113,900
Y=562,490

X=2,113,949
Y=562,858

PARCEL 11-A
20.58 AC.

LOOP 410



Pop-Facts Demographics

Description	5245 SW LOOP 410, SAN ANTONIO, TX, 78227-4417: Radius Analysis Area Group: Radius 1.0 mile(s)		5245 SW LOOP 410, SAN ANTONIO, TX, 78227-4417: Radius Analysis Area Group: Radius 3.0 mile(s)		5245 SW LOOP 410, SAN ANTONIO, TX, 78227-4417: Radius Analysis Area Group: Radius 5.0 mile(s)	
	Total	%	Total	%	Total	%
Pop-Facts Summary						
Population						
2021 Projection	14,219		87,450		198,061	
2016 Estimate	13,203		81,445		183,423	
2010 Census	11,982		73,993		163,388	
2000 Census	8,539		59,452		124,679	
Growth 2016 - 2021		7.70%		7.37%		7.98%
Growth 2010 - 2016		10.19%		10.07%		12.26%
Growth 2000 - 2010		40.33%		24.46%		31.05%
Households						
2021 Projection	3,283		24,254		57,410	
2016 Estimate	3,017		22,460		52,881	
2010 Census	2,715		20,242		46,716	
2000 Census	2,181		16,782		35,723	
Growth 2016 - 2021		8.81%		7.98%		8.56%
Growth 2010 - 2016		11.12%		10.96%		13.20%
Growth 2000 - 2010		24.50%		20.62%		30.78%
Family Households						
2021 Projection	2,600		18,548		44,683	
2016 Estimate	2,389		17,144		41,166	
2010 Census	2,154		15,404		36,363	
2000 Census	1,583		13,008		28,560	
Growth 2016 - 2021		8.82%		8.19%		8.54%
Growth 2010 - 2016		10.92%		11.30%		13.21%
Growth 2000 - 2010		36.11%		18.43%		27.32%

Pop-Facts Demographics

Description	5245 SW LOOP 410, SAN ANTONIO, TX, 78227-4417: Radius Analysis Area Group: Radius 1.0 mile(s)		5245 SW LOOP 410, SAN ANTONIO, TX, 78227-4417: Radius Analysis Area Group: Radius 3.0 mile(s)		5245 SW LOOP 410, SAN ANTONIO, TX, 78227-4417: Radius Analysis Area Group: Radius 5.0 mile(s)	
	Total	%	Total	%	Total	%
2016 Est. Households by HH Income	3,017		22,460		52,881	
Income < \$15,000	445	14.74%	3,581	15.94%	7,272	13.75%
Income \$15,000 - \$24,999	279	9.24%	2,960	13.18%	6,484	12.26%
Income \$25,000 - \$34,999	418	13.86%	2,923	13.01%	6,522	12.33%
Income \$35,000 - \$49,999	507	16.82%	3,990	17.76%	8,896	16.82%
Income \$50,000 - \$74,999	624	20.70%	4,387	19.53%	11,076	20.95%
Income \$75,000 - \$99,999	314	10.42%	2,238	9.97%	6,313	11.94%
Income \$100,000 - \$124,999	233	7.71%	1,448	6.45%	3,676	6.95%
Income \$125,000 - \$149,999	80	2.64%	557	2.48%	1,528	2.89%
Income \$150,000 - \$199,999	89	2.95%	268	1.19%	785	1.48%
Income \$200,000 - \$249,999	22	0.74%	62	0.28%	198	0.37%
Income \$250,000 - \$499,999	5	0.16%	36	0.16%	105	0.20%
Income \$500,000+	1	0.02%	11	0.05%	27	0.05%
2016 Est. Average Household Income	\$56,132		\$50,346		\$53,996	
2016 Est. Median Household Income	\$45,842		\$41,643		\$45,393	
2016 Median HH Inc. by Single-Class. Race or Eth.						
White Alone	\$43,714		\$41,349		\$45,726	
Black or African American Alone	\$59,826		\$37,355		\$45,336	
American Indian and Alaska Native Alone	\$33,203		\$42,187		\$43,429	
Asian Alone	\$43,808		\$38,070		\$46,833	
Native Hawaiian and Other Pacific Islander Alone	\$111,620		\$76,249		\$76,222	
Some Other Race Alone	\$43,505		\$44,588		\$43,369	
Two or More Races	\$68,015		\$48,951		\$45,089	
Hispanic or Latino	\$39,160		\$40,104		\$43,780	
Not Hispanic or Latino	\$56,560		\$44,997		\$49,058	
2016 Est. Family HH Type by Presence of Own Child.						
Married-Couple Family, own children	927	38.81%	5,627	32.82%	14,172	34.43%
Married-Couple Family, no own children	663	27.75%	4,909	28.64%	11,785	28.63%
Male Householder, own children	114	4.75%	868	5.06%	2,038	4.95%
Male Householder, no own children	88	3.70%	767	4.48%	1,735	4.21%
Female Householder, own children	370	15.49%	2,977	17.37%	6,975	16.94%
Female Householder, no own children	227	9.50%	1,995	11.64%	4,459	10.83%