

FOR LEASE

4833 BETHESDA AVE

BETHESDA, MARYLAND



FEATURES

- + Metro accessible
- + Walking distance to Bethesda Avenue shops, restaurants, and other retail
- + Hotels nearby
- + Exterior building signage

Suite	Square Feet	Condition
204	1,620 SF	Shell
300	2,767 SF	Ready to Move In



CONTACT US

JAMES G. CAHILL

Senior Vice President
+1 301 215 4111
jim.cahill@cbre.com

STEVEN SILVERBERG

First Vice President
+1 301 215 4122
steve.silverberg@cbre.com

www.cbre.com/bethesda

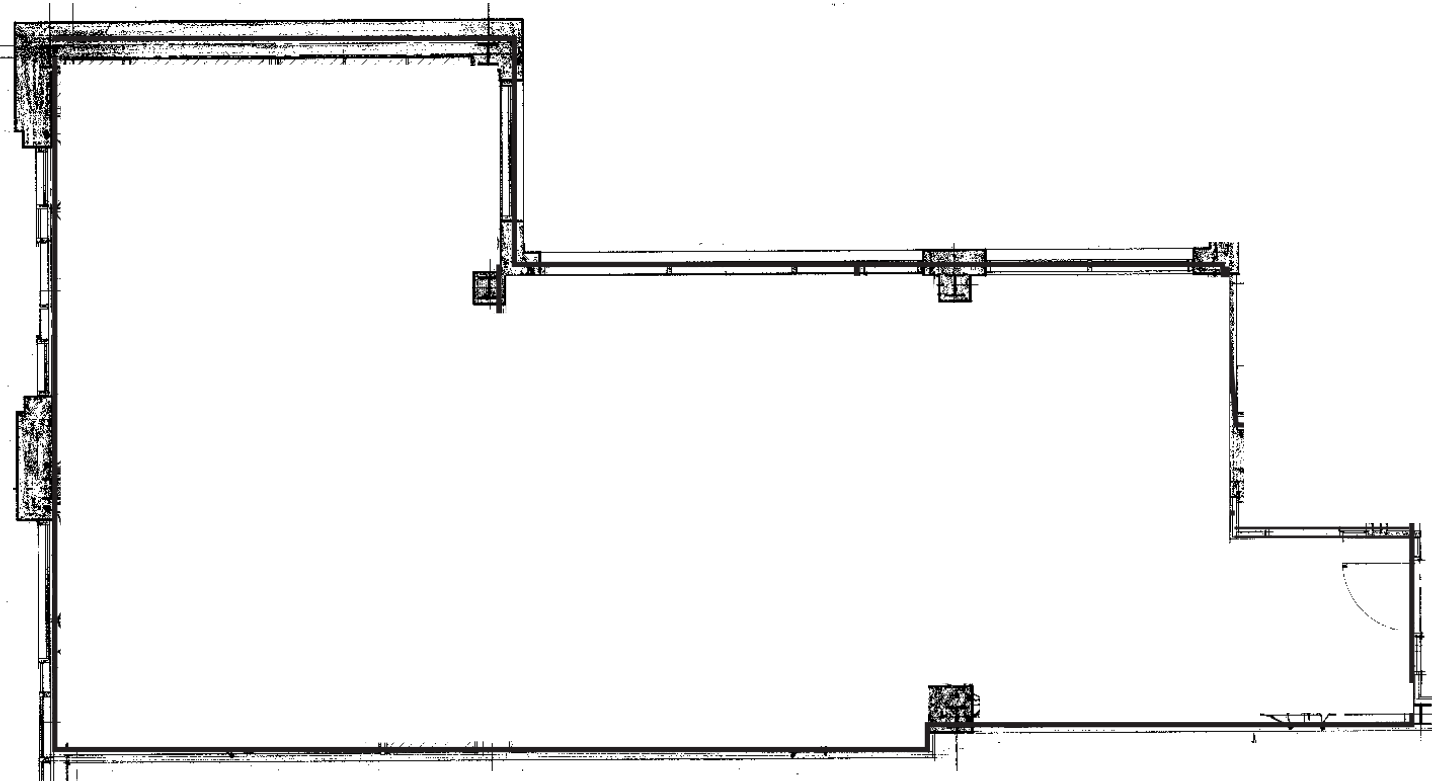
CBRE

FOR LEASE
4833 BETHESDA AVE

BETHESDA, MD



SUITE 204: 1,620 SF



© 2017 CBRE, Inc. The information contained in this document has been obtained from sources believed reliable. While CBRE, Inc. does not doubt its accuracy, CBRE, Inc. has not verified it and makes no guarantee, warranty or representation about it. It is your responsibility to independently confirm its accuracy and completeness. Any projections, opinions, assumptions or estimates used are for example only and do not represent the current or future performance of the property. The value of this transaction to you depends on tax and other factors which should be evaluated by your tax, financial and legal advisors. You and your advisors should conduct a careful, independent investigation of the property to determine to your satisfaction the suitability of the property for your needs.

Photos herein are the property of their respective owners and use of these images without the express written consent of the owner is prohibited.

www.cbre.com/bethesda

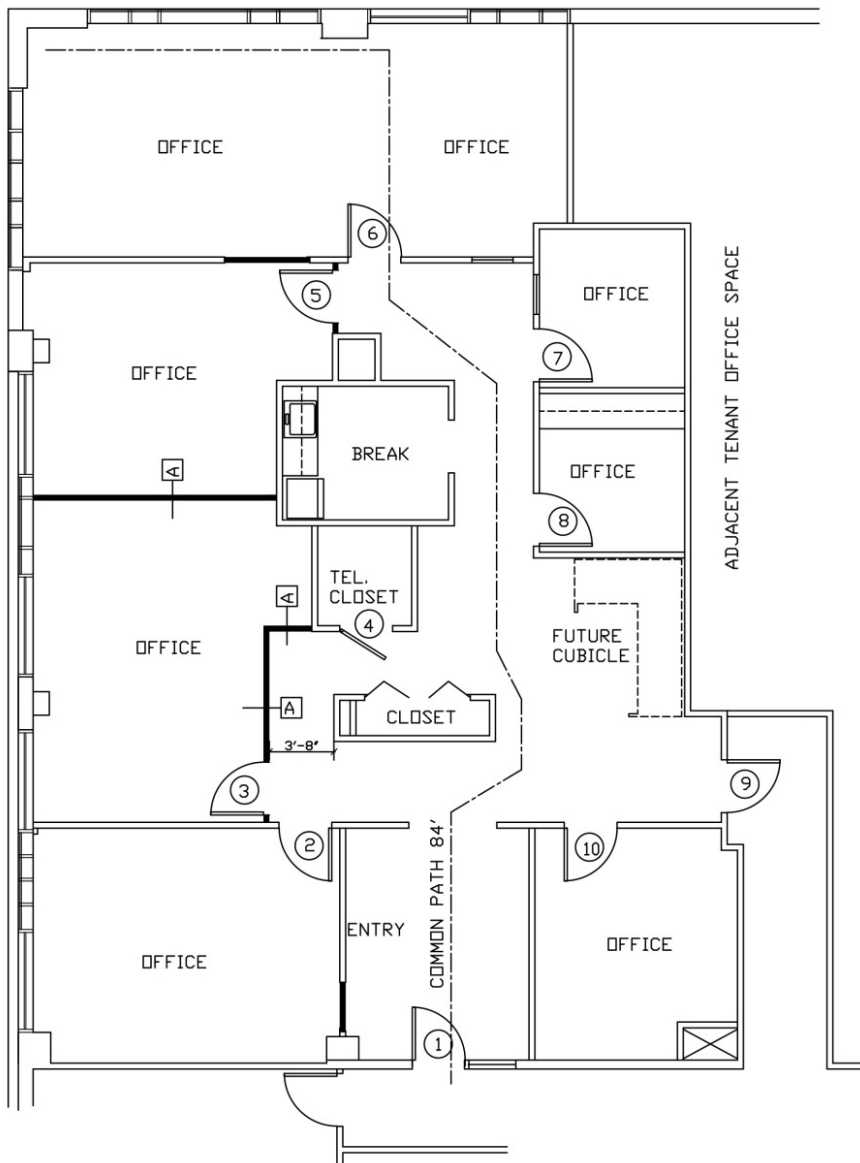
CBRE

FOR LEASE 4833 BETHESDA AVE

BETHESDA, MD



SUITE 300: 2,767 SF



© 2017 CBRE, Inc. The information contained in this document has been obtained from sources believed reliable. While CBRE, Inc. does not doubt its accuracy, CBRE, Inc. has not verified it and makes no guarantee, warranty or representation about it. It is your responsibility to independently confirm its accuracy and completeness. Any projections, opinions, assumptions or estimates used are for example only and do not represent the current or future performance of the property. The value of this transaction to you depends on tax and other factors which should be evaluated by your tax, financial and legal advisors. You and your advisors should conduct a careful, independent investigation of the property to determine to your satisfaction the suitability of the property for your needs.

Photos herein are the property of their respective owners and use of these images without the express written consent of the owner is prohibited.