

LAND FOR SALE OR LEASE

TURNERSVILLE, NEW JERSEY

BLACK HORSE PIKE (ROUTE 42) & MADISON AVENUE

UP TO ±1.4 ACRES AVAILABLE

RETAIL



FEATURES

- + Prominent Corner Location with Great Visibility
- + High Growth Area with Strong Incomes
- + Located in the Heart of the Turnersville Retail Corridor
- + Positioned Across from Lowe's & Target

DEMOGRAPHICS

	1 Mile	3 Miles	5 Miles
Population (Est. 2016)	6,855	60,446	166,483
Average Household Income	\$97,989	\$99,132	\$88,250
Daytime Population	7,567	26,900	57,628

CONTACT

Gary N. Leone

First Vice President
 +1 610 834 8000
 gary.leone@cbre.com
 Licensed: PA
 Licensed Salesperson: NJ

CBRE, Inc.

625 West Ridge Pike; Building A; Suite 100
 Conshohocken, PA 19428
 T +1 610 834 8000
 F +1 610 834 1793
 Licensed Real Estate Broker

© 2016 CBRE, Inc. This information has been obtained from sources believed reliable. We have not verified it and make no guarantee, warranty or representation about it. Any projections, opinions, assumptions or estimates used are for example only and do not represent the current or future performance of the property. You and your advisors should conduct a careful, independent investigation of the property to determine to your satisfaction the suitability of the property for your needs. Photos herein are the property of their respective owners and use of these images without the express written consent of the owner is prohibited. CBRE and the CBRE logo are service marks of CBRE, Inc. and/or its affiliated or related companies in the United States and other countries. All other marks displayed on this document are the property of their respective owners.

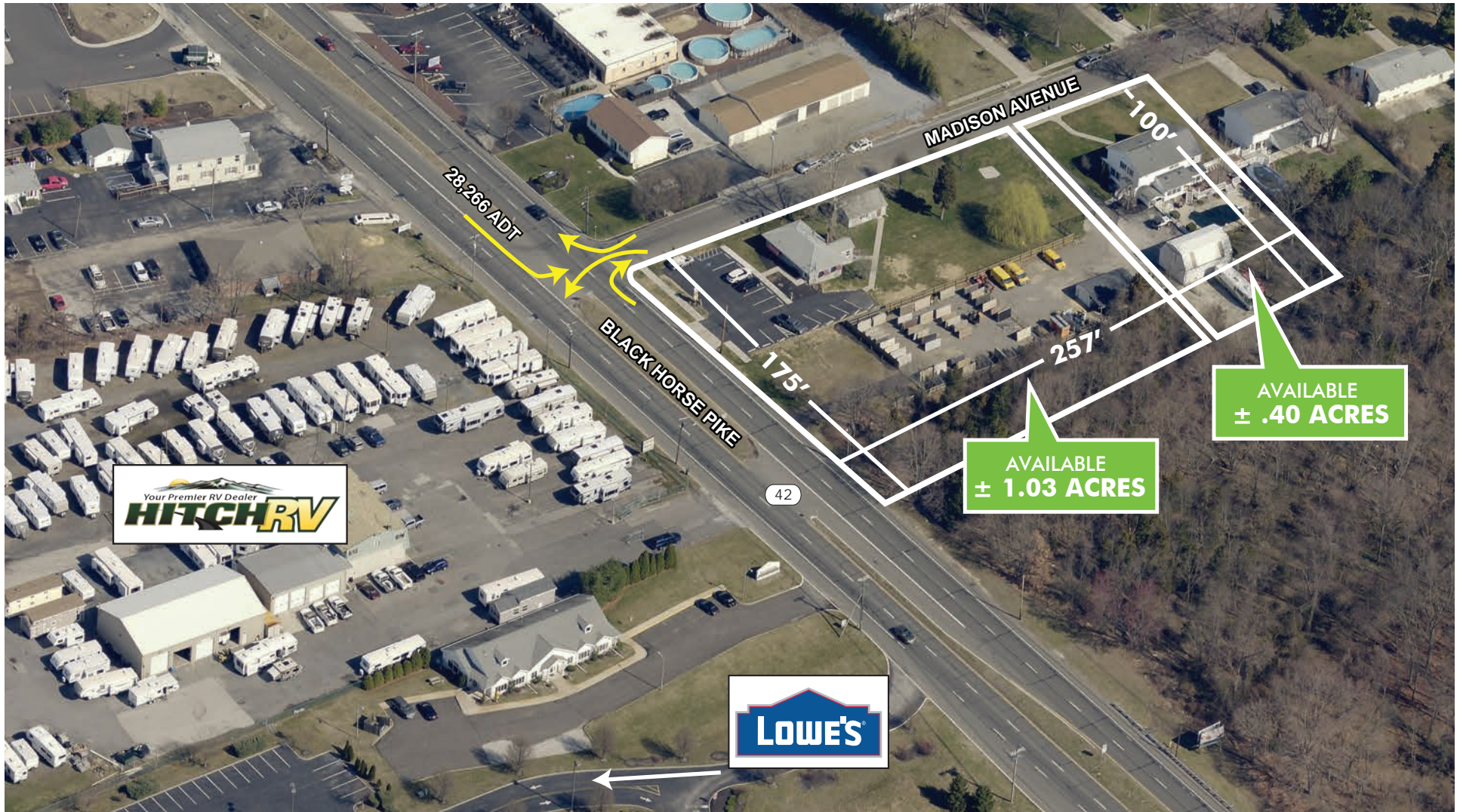
CBRE | FAMECO

LAND FOR SALE OR LEASE

TURNERSVILLE, NEW JERSEY

BLACK HORSE PIKE (ROUTE 42) & MADISON AVENUE

RETAIL



CBRE | FAMECO

LAND FOR SALE OR LEASE

TURNERSVILLE, NEW JERSEY

BLACK HORSE PIKE (ROUTE 42) & MADISON AVENUE

RETAIL

MARKET AERIAL

