

Eleanor's Square

NEC of Denton Tap & Town Center Dr
230 N Denton Tap Rd, Coppell, Texas 75019



Highlights

- 1,500 SF End Cap Available - 2nd Gen Hair Salon & 2,377 SF In-Line Available
- Across from Coppell HS (off-campus lunch crowd); Coppell YMCA, Coppell Municipal Courts Building, Coppell Library - near Tom Thumb and Sprouts
- In the center of Coppell's prestigious Town Center District next to City Hall and the Y.M.C.A. (2nd largest in the metroplex)
- Hard, signalized corner location with excellent visibility and easy access
- Call for Pricing

Demographics

	1-mile	3-mile	5-mile
2017 Population	13,566	75,292	194,221
Daytime Pop.	11,149	89,015	238,927
Avg HH Income	\$157,742	\$120,051	\$104,341

Traffic Counts

Denton Tap Rd: 30,801 VPD (MPSI 2012)



Eleanor's Square

NEC of Denton Tap & Town Center Dr

230 N Denton Tap Rd, Coppell, Texas 75019



DuWEST
REALTY



For More Information:

Call - 214-720-0004

www.duwestrealty.com

Eleanor's Square

NEC of Denton Tap & Town Center Dr

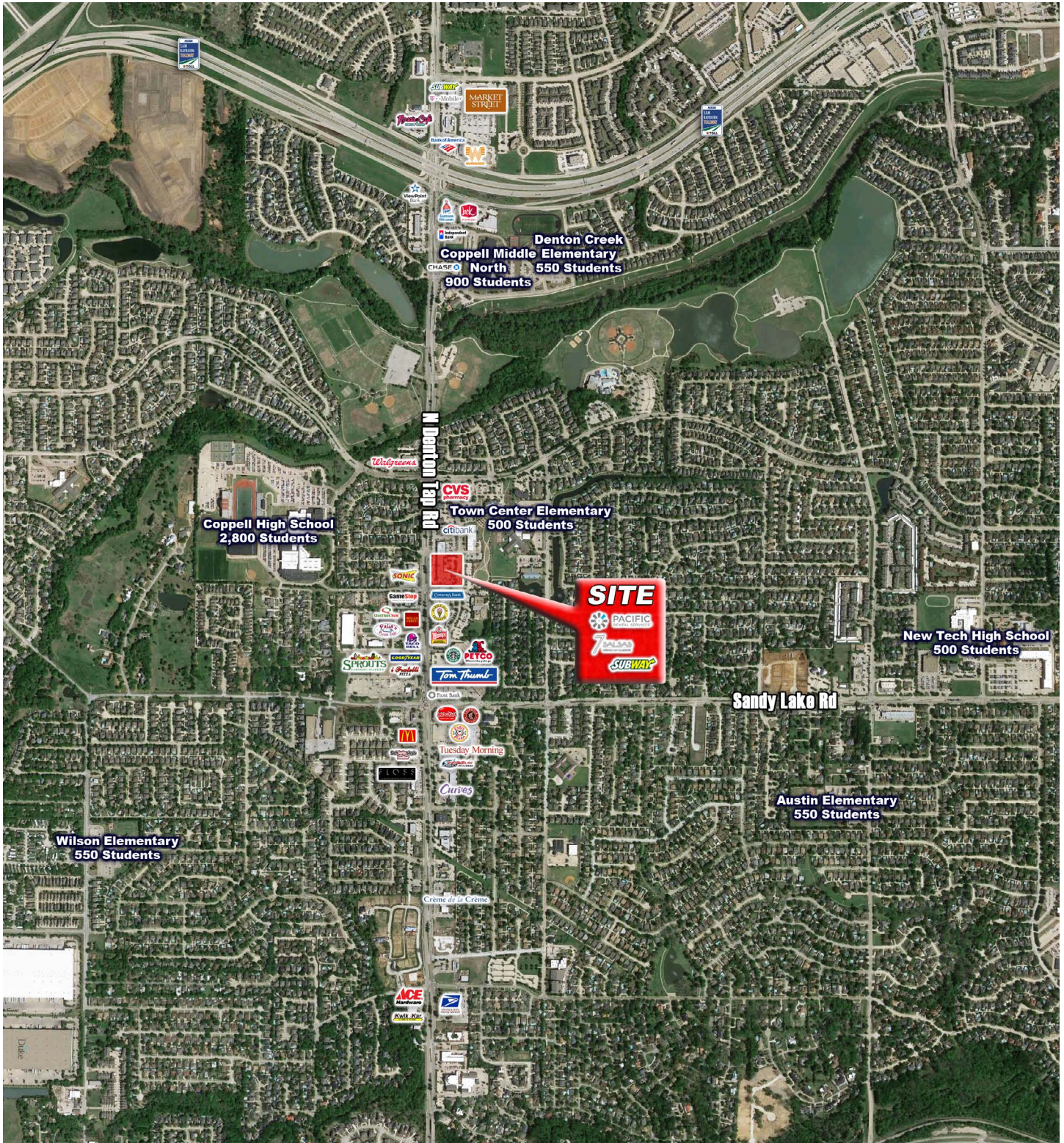
230 N Denton Tap Rd, Coppell, Texas 75019



Eleanor's Square

NEC of Denton Tap & Town Center Dr

230 N Denton Tap Rd, Coppell, Texas 75019



DUWEST
REALTY



For More Information:

Call - 214-720-0004

www.duwestrealty.com