

For Sale or Lease

Owner/User Opportunity

+/- 13,700 rentable SF



Schubert Building

3848 S Pine St, Tacoma, WA 98409

- +/- 13,700 rentable SF
- Suites available: office, +/- 1,900 - 9,570 SF (divisible)
- Storage/garage: 385 SF
- Prominent corner location on South Pine & South 40th Street near Tacoma Mall
- On site (partially fenced) and street parking
- Superb access to I-5 via South 38th Street
- Zoned UCX (Urban Center Mixed Use); multiple uses available
- Sale Price: \$1,170,000
- Lease rate: \$12.00 - \$16.00 PSF, gross

For more information:

Kim Marvik

+1 253 203 1325 • kmarvik@nai-psp.com



BELLEVUE | SEATTLE | TACOMA

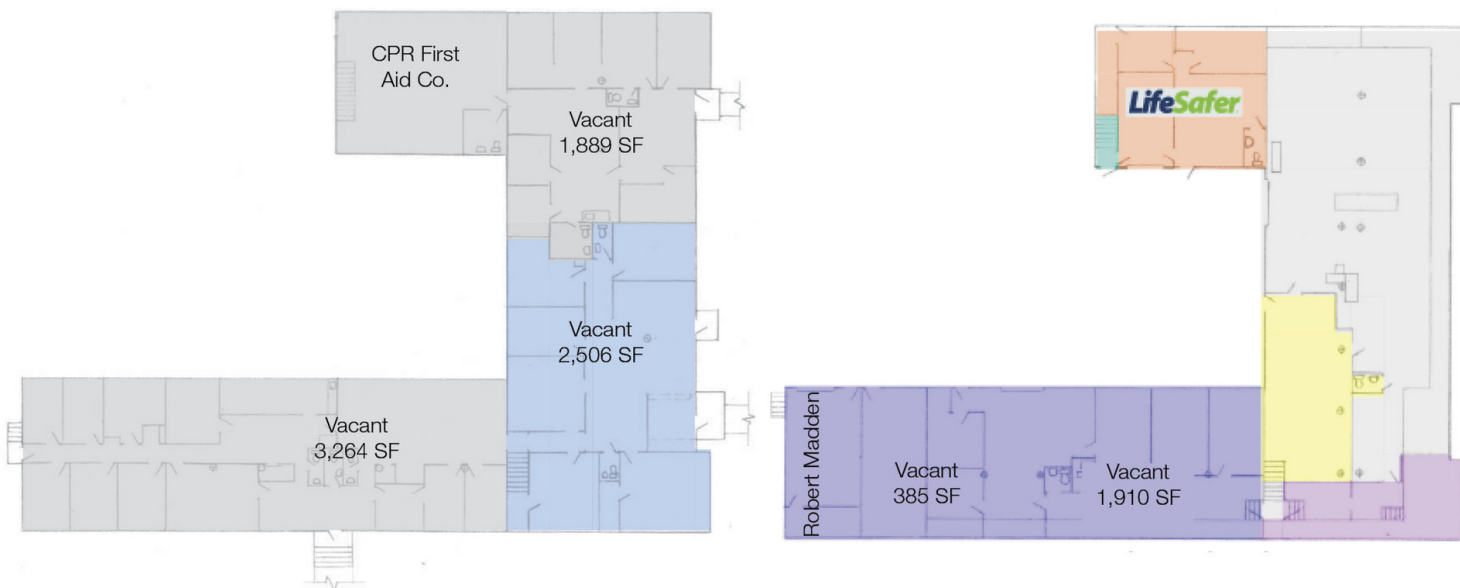
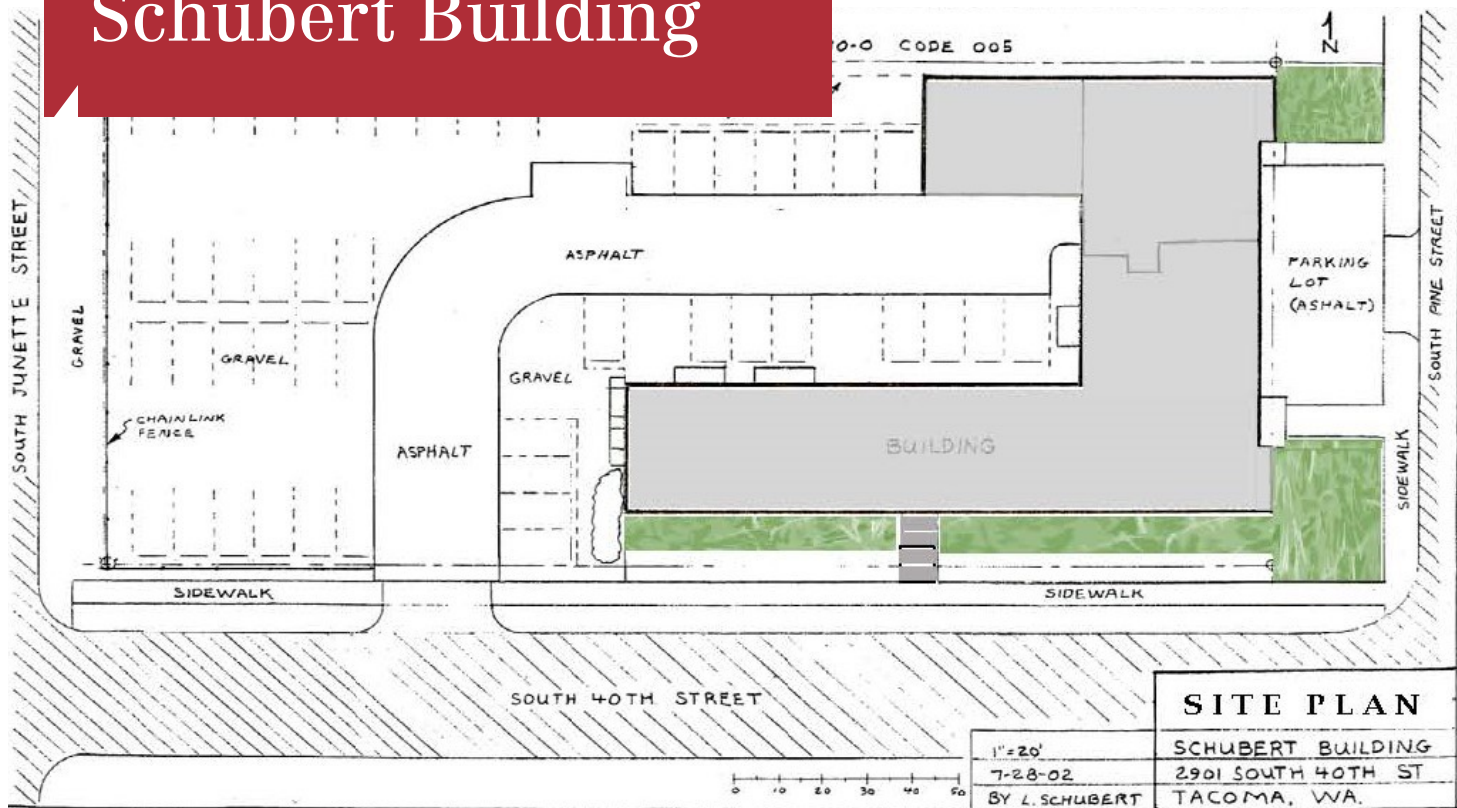
1201 Pacific Avenue, Suite 1703
Tacoma, WA 98402
+1 253 383 3100

<https://www.nai-psp.com>

THE INFORMATION CONTAINED HEREIN HAS BEEN GIVEN TO US BY THE OWNER OF THE PROPERTY OR OTHER SOURCES WE DEEM RELIABLE, WE HAVE NO REASON TO DOUBT ITS ACCURACY, BUT WE DO NOT GUARANTEE IT. ALL INFORMATION SHOULD BE VERIFIED PRIOR TO PURCHASE OR LEASE.

For Sale or Lease

Schubert Building



BELLEVUE | SEATTLE | TACOMA

1201 Pacific Avenue, Suite 1703
Tacoma, WA 98402
+1 253 383 3100

<https://www.nai-psp.com>

THE INFORMATION CONTAINED HEREIN HAS BEEN GIVEN TO US BY THE OWNER OF THE PROPERTY OR OTHER SOURCES WE DEEM RELIABLE, WE HAVE NO REASON TO DOUBT ITS ACCURACY, BUT WE DO NOT GUARANTEE IT. ALL INFORMATION SHOULD BE VERIFIED PRIOR TO PURCHASE OR LEASE.

For Sale or Lease

Schubert Building

Property Type:	Perfect Owner/User Opportunity - Multi-tenant office/retail with small flex areas (garages & basement storage)
Property Address:	3848 S Pine St, Tacoma, WA 98409 Prominent corner site near Tacoma Mall & South 38th across from United States Postal Service
Parcel Size:	32,500 square feet (.75 acres); partially fenced
Building:	17,846 square feet (gross) 13,656 square feet (rentable)
Parking:	6 stalls in paved lot off South Pine Street (front); 47 stalls in gravel, fenced lot (rear); with adjacent street parking on South 40th Street
Tax Parcel Number:	9120000100
Zoning:	UCX- Urban Center Mixed-Use
Frontage/Depth:	260' on South 40th; 125' on South Pine and 125' South Junett
Access:	Site is level offering grade access to building from Pine Street (upper east level) and 40th Street (lower west level); additional stair access to second level (south and west). Interstate 5 is 1/2 mile from property via S 38th Street interchanges; SR-16/Union Avenue interchange is 1.5 miles from property. Site is serviced by Pierce Transit.
Construction:	1957, two-story wood frame and brick veneer; renovation (various dates)
Heating:	Electric heat pumps
Utilities:	Tacoma Public Utilities for electricity, water, sewer and storm
Offering Price:	\$1,170,000



BELLEVUE | SEATTLE | TACOMA

1201 Pacific Avenue, Suite 1703
Tacoma, WA 98402
+1 253 383 3100

<https://www.nai-psp.com>

THE INFORMATION CONTAINED HEREIN HAS BEEN GIVEN TO US BY THE OWNER OF THE PROPERTY OR OTHER SOURCES WE DEEM RELIABLE, WE HAVE NO REASON TO DOUBT ITS ACCURACY, BUT WE DO NOT GUARANTEE IT. ALL INFORMATION SHOULD BE VERIFIED PRIOR TO PURCHASE OR LEASE.

Office for Lease

Schubert Building



1201 Pacific Avenue, Suite 1703
Tacoma, WA 98402
+1 253 383 3100

<https://www.nai-psp.com>

BELLEVUE | SEATTLE | TACOMA

THE INFORMATION CONTAINED HEREIN HAS BEEN GIVEN TO US BY THE OWNER OF THE PROPERTY OR OTHER SOURCES WE DEEM RELIABLE, WE HAVE NO REASON TO DOUBT ITS ACCURACY, BUT WE DO NOT GUARANTEE IT. ALL INFORMATION SHOULD BE VERIFIED PRIOR TO PURCHASE OR LEASE.