

FOR LEASE

City: Aurora
County: Arapahoe
Building Size: 27,066 SF
Year Built: 1987
Parking: 3.55 / 1,000 SF
Space Available: 6,029 RSF
Minimum Divisible: 902 RSF
Maximum Contiguous: 2,425 RSF
Lease Rate: \$15.00/SF
Lease Type: Full Service Gross

Office Space

12510 E. Iliff Avenue
Aurora, Colorado

Call For Incentives!



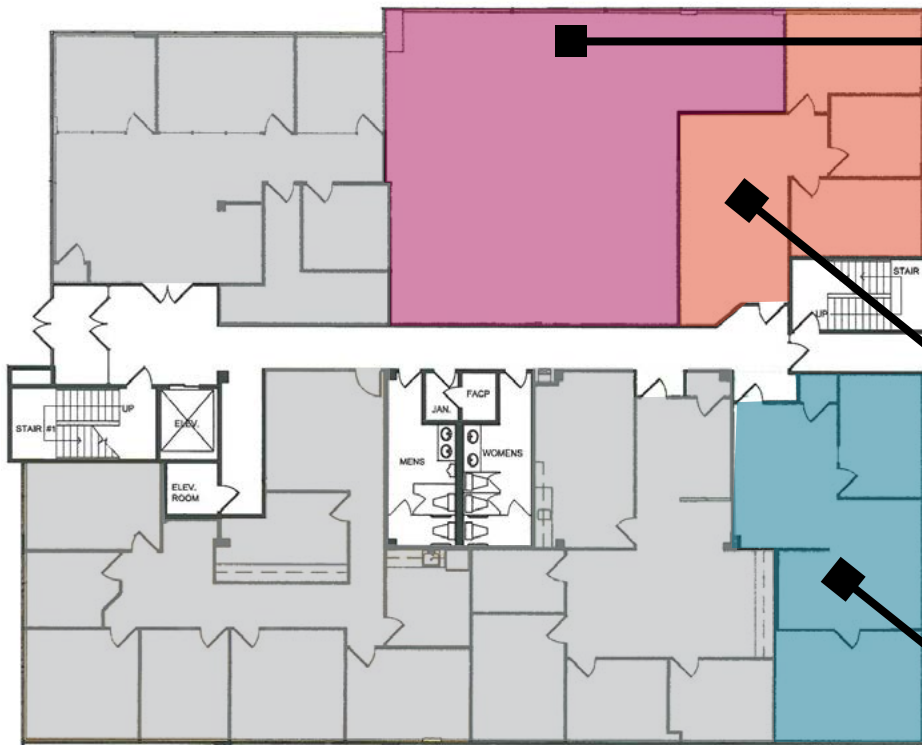
Matt Kulbe
Brokerage Services
direct 720.376.6800
cell 720.635.4591
matt.kulbe@navpointre.com

Anthony Damico
Brokerage Services
direct 720.376.6806
cell 720.935.6612
anthony.damico@navpointre.com

navpoint
REAL ESTATE GROUP

Aurora Park Plaza Office Space For Lease

First Floor



AVAILABLE

Suite 105 | 1,681 SF

1 Office
Break Room
Large Work Area
Fully Furnished
Like New Condition

AVAILABLE

Suite 100B | 902 SF

2 Offices on Glass
Small Conference Room
Reception Area

AVAILABLE

Suite 110 | 1,021 SF

2 Offices
Conference Room
Reception Area
Large Work Area
Closet

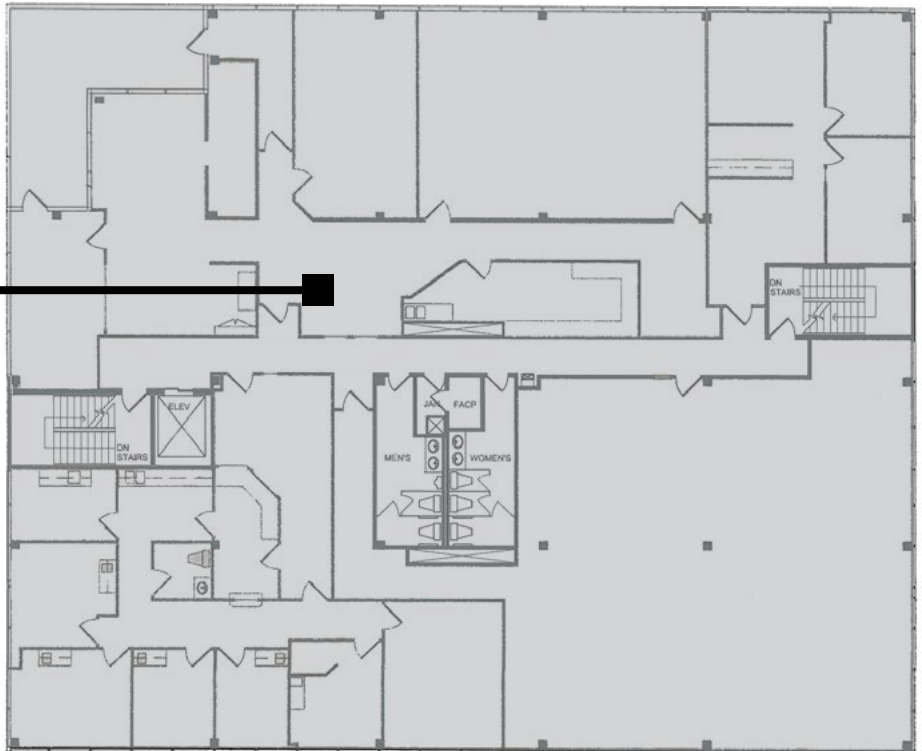
PROPERTY DESCRIPTION:

- Landlord will Build to Tenant's Needs!
- Extremely Aggressive Lease Rates
- High-end Finishes in Suites and Common Areas
- Ample Parking and RTD Bus Stop On-site
- Excellent Access to I-225
- Restaurants and Shopping Within Walking Distance



Second Floor

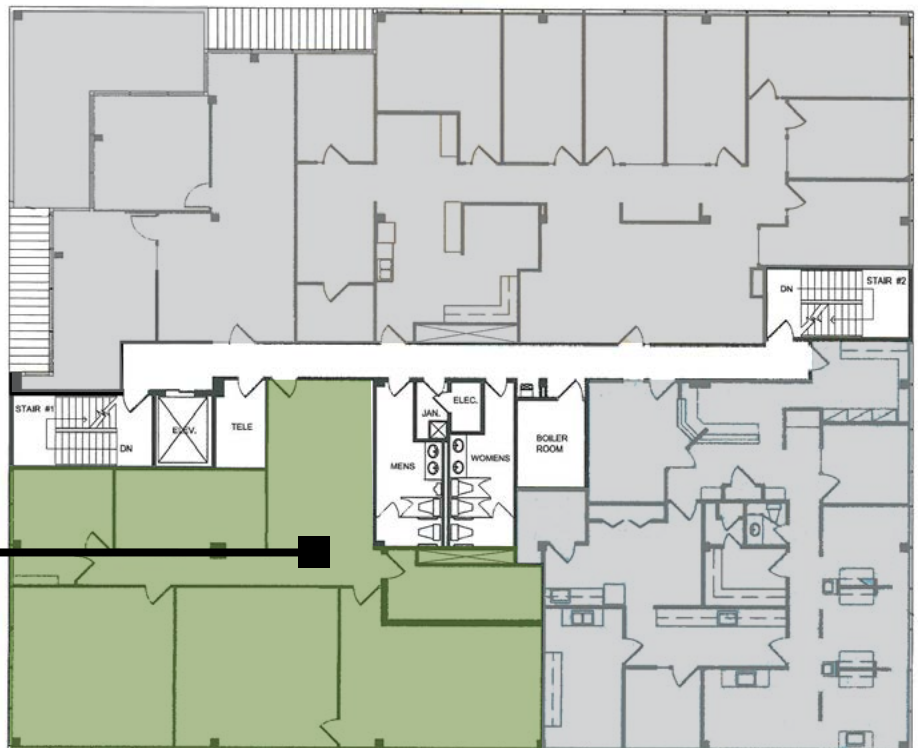
Second Floor
Fully Leased



Third Floor

AVAILABLE
Suite 340 | 2,425 SF

- 3 Offices
- Conference Room
- Reception Area
- Break Room
- Storage / Work Room



Aurora Park Plaza Office Space For Lease

12510 E. Iliff Ave, Aurora, CO



The information contained herein is from sources deemed reliable. We have no reason to doubt its accuracy but do not guarantee it. It is the responsibility of the person viewing this information independently verify it. This package is subject to change, prior sale, or complete withdrawal.